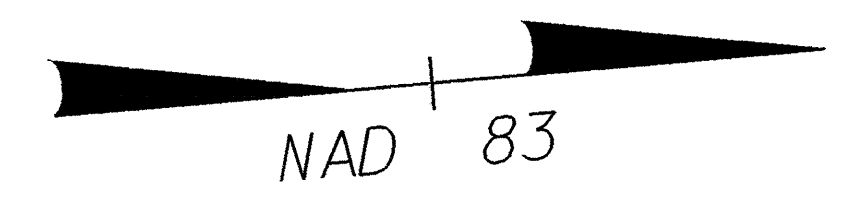


NOTE:  
PLACE TEMPORARY ROCK SEDIMENT DAMS TYPE-B  
AND TEMPORARY ROCK SILT CHECKS TYPE-A AT  
DRAINAGE OUTLETS.

CLEARING AND GRUBBING  
EROSION CONTROL FOR  
CONSTRUCTION SHEET 5

PROJECT REFERENCE NO. U-2734		SHEET NO. EC-4/CONST. 5	
R/W SHEET NO. 5		HYDRAULICS ENGINEER	
ROADWAY DESIGN ENGINEER		HYDRAULICS ENGINEER	
CONST. REV.			
R/W REV.			

NOTE: SEE SHEET NO.17 FOR -L- PROFILE  
SEE SHEET NO.22 FOR -BIKEPATH- PROFILE  
SEE SHEET NO.2-1 FOR -BIKEPATH- ALIGNMENT

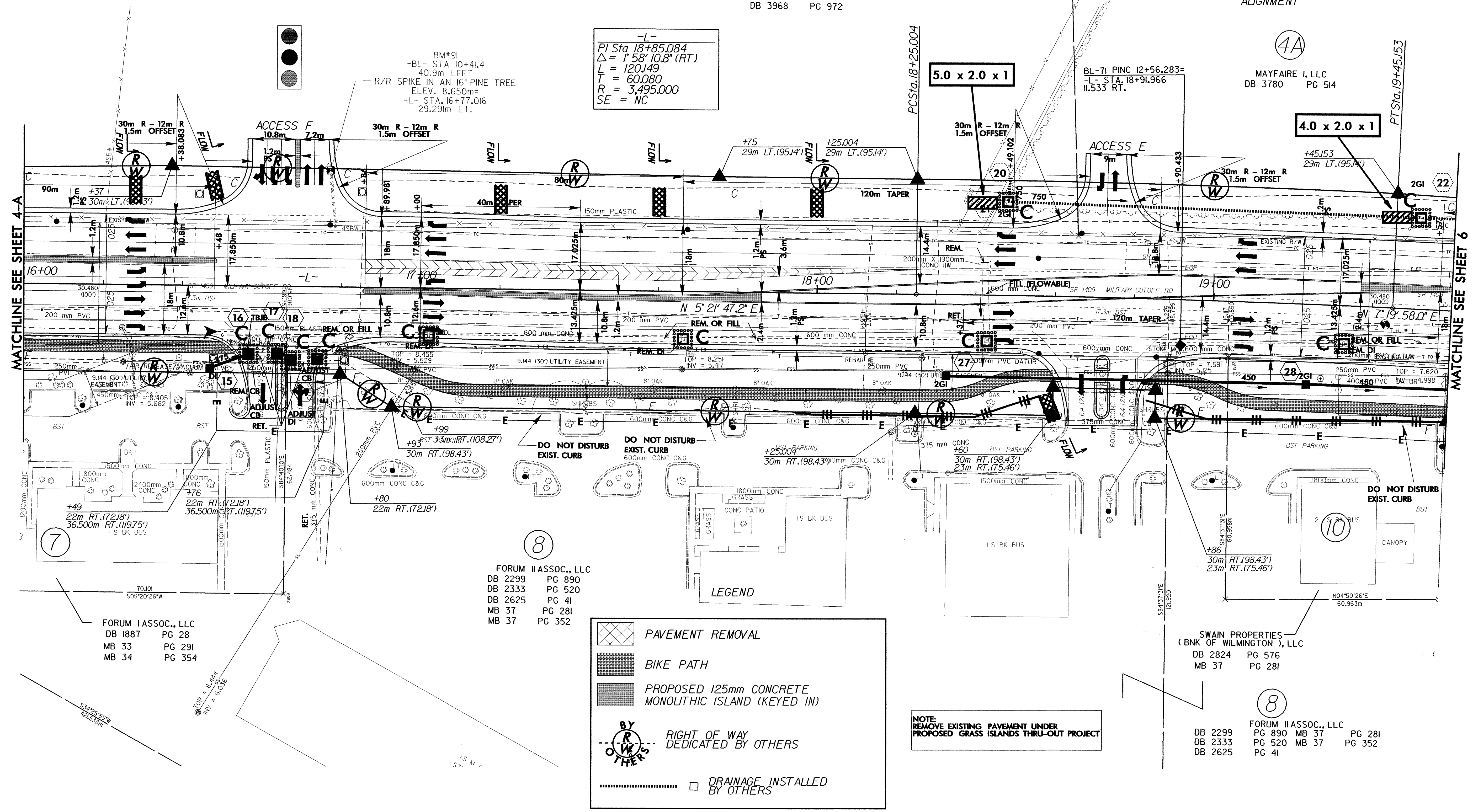


MAYFAIRE I, LLC  
DB 3968 PG 972

MAYFAIRE I, LLC  
DB 3780 PG 514

-L-  
PI Sta 18+85.084  
 $\Delta = 1'58''10.8''$  (RT)  
L = 120.149  
T = 60.080  
R = 3,495.000  
SE = NC

BM#91  
-BL- STA 10+41.4  
40.9m LEFT  
ELEV. 8.650m  
-L- STA. 16+77.016  
29.291m LT.



MATCHLINE SEE SHEET 4-A

MATCHLINE SEE SHEET 6

FORUM I ASSOC., LLC  
DB 1887 PG 28  
MB 33 PG 291  
MB 34 PG 354

FORUM II ASSOC., LLC  
DB 2299 PG 890  
DB 2333 PG 520  
DB 2625 PG 41  
MB 37 PG 281  
MB 37 PG 352

	PAVEMENT REMOVAL
	BIKE PATH
	PROPOSED 125mm CONCRETE MONOLITHIC ISLAND (KEYED IN)
	RIGHT OF WAY DEDICATED BY OTHERS
	DRAINAGE INSTALLED BY OTHERS

NOTE:  
REMOVE EXISTING PAVEMENT UNDER  
PROPOSED GRASS ISLANDS THRU-OUT PROJECT

SWAIN PROPERTIES  
(BANK OF WILMINGTON), LLC  
DB 2824 PG 576  
MB 37 PG 281

FORUM II ASSOC., LLC  
DB 2299 PG 890 MB 37 PG 281  
DB 2333 PG 520 MB 37 PG 352  
DB 2625 PG 41