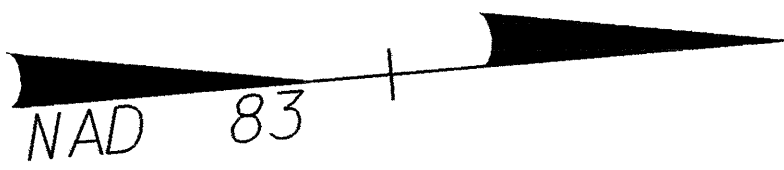


NOTE:
PLACE TEMPORARY ROCK SEDIMENT DAMS TYPE- B
AND TEMPORARY ROCK SILT CHECKS TYPE-A AT
DRAINAGE OUTLETS.

CLEARING AND GRUBBING
EROSION CONTROL FOR
CONSTRUCTION SHEET 8

ENVIRONMENTALLY SENSITIVE AREA
SEE PROJECT SPECIAL PROVISIONS

NOTE:
REMOVE EXISTING PAVEMENT UNDER
PROPOSED GRASS ISLANDS THRU-OUT PROJECT



LEGEND

- PAVEMENT REMOVAL
- BIKE PATH
- PROPOSED 125mm CONCRETE MONOLITHIC ISLAND (KEYED IN)
- RIGHT OF WAY DEDICATED BY OTHERS

PROJECT REFERENCE NO. U-2734		SHEET NO. EC-7/CONST.8	
R/W SHEET NO. 8		HYDRAULICS ENGINEER	
ROADWAY DESIGN ENGINEER		ROADWAY DESIGN ENGINEER	
CONST.REV.		R/W REV.	

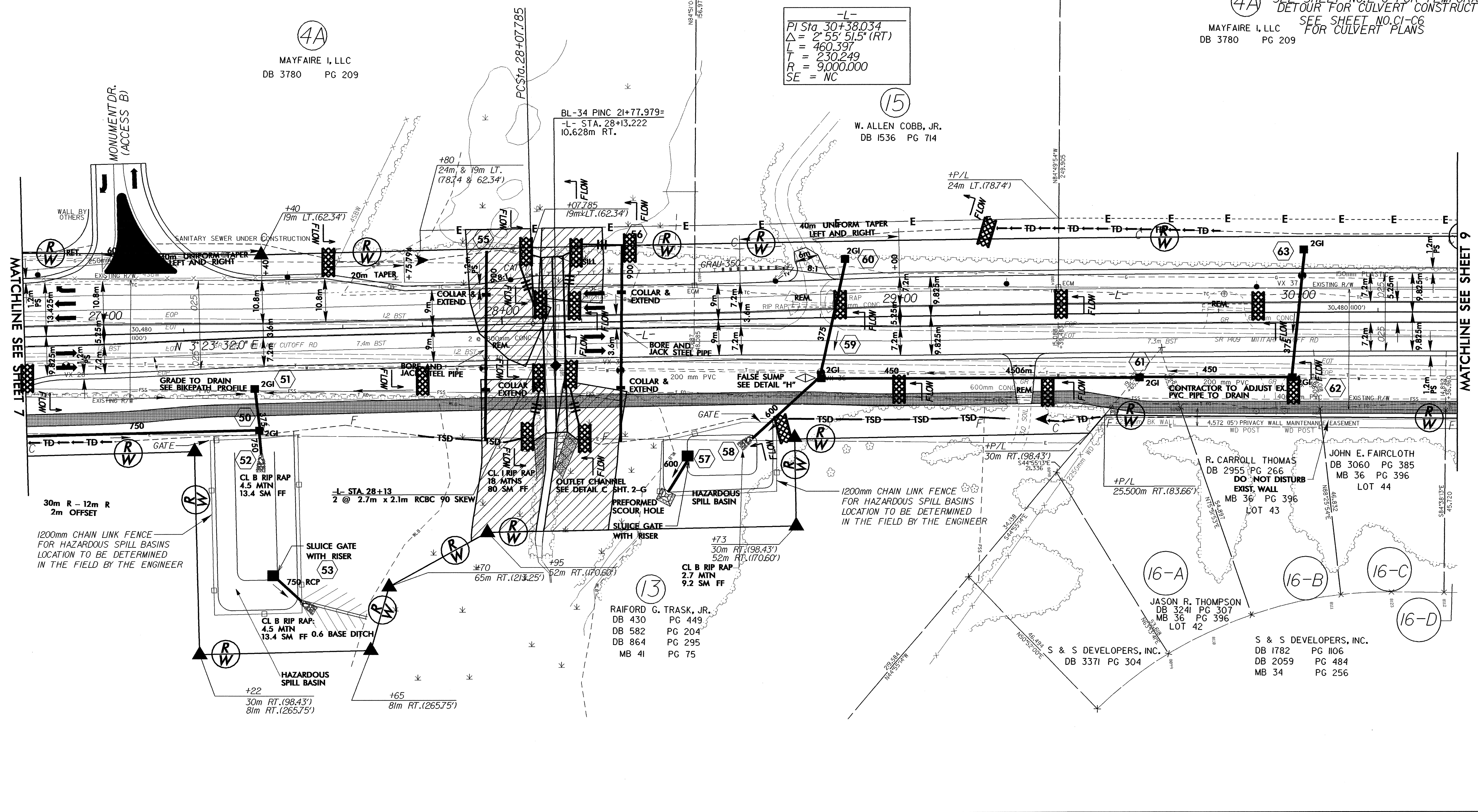
NOTE: SEE SHEETS NO.18 & 19 FOR -L- PROFILE
SEE SHEET NO.23 FOR -BIKE- PROFILE
SEE SHEET NO.2-K AND 2-L
FOR -BIKE- ALIGNMENT
SEE SHEET NO.2-S FOR HAZARDOUS
SPILL RETENTION BASIN
SEE SHEET NO.2-U FOR TEMPORARY
DETOUR FOR CULVERT CONSTRUCTION
SEE SHEET NO.C1-C6
FOR CULVERT PLANS

4A
MAYFAIRE I, LLC
DB 3780 PG 209

-L-
PI Sta. 30+38.034
 $\Delta = 2^{\circ}55'51.5"$ (RT)
L = 460.397
T = 230.249
R = 9,000.000
SE = NC

15
W. ALLEN COBB, JR.
DB 1536 PG 714

BL-34 PINC 21+77.979=
-L- STA. 28+13.222
10.628m RT.



1200mm CHAIN LINK FENCE
FOR HAZARDOUS SPILL BASINS
LOCATION TO BE DETERMINED
IN THE FIELD BY THE ENGINEER

1200mm CHAIN LINK FENCE
FOR HAZARDOUS SPILL BASINS
LOCATION TO BE DETERMINED
IN THE FIELD BY THE ENGINEER

RAIFORD G. TRASK, JR.
DB 430 PG 449
DB 582 PG 204
DB 864 PG 295
MB 41 PG 75

JASON R. THOMPSON
DB 3241 PG 307
MB 36 PG 396
LOT 42

S & S DEVELOPERS, INC.
DB 1782 PG 1106
DB 2059 PG 484
MB 34 PG 256

R. CARROLL THOMAS
DB 2955 PG 266
DO NOT DISTURB
EXIST. WALL
MB 36 PG 396
LOT 43

JOHN E. FAIRCLOTH
DB 3060 PG 385
MB 36 PG 396
LOT 44

MATCHLINE SEE SHEET 7

MATCHLINE SEE SHEET 9