

5 0 10

CONST. REV.

R/W REV.

PROJECT REFERENCE NO.	SHEET NO.
U-2734	EC-25/CONST. II
R/W SHEET NO.	II
ROADWAY DESIGN ENGINEER	HYDRAULICS ENGINEER

NAD 83

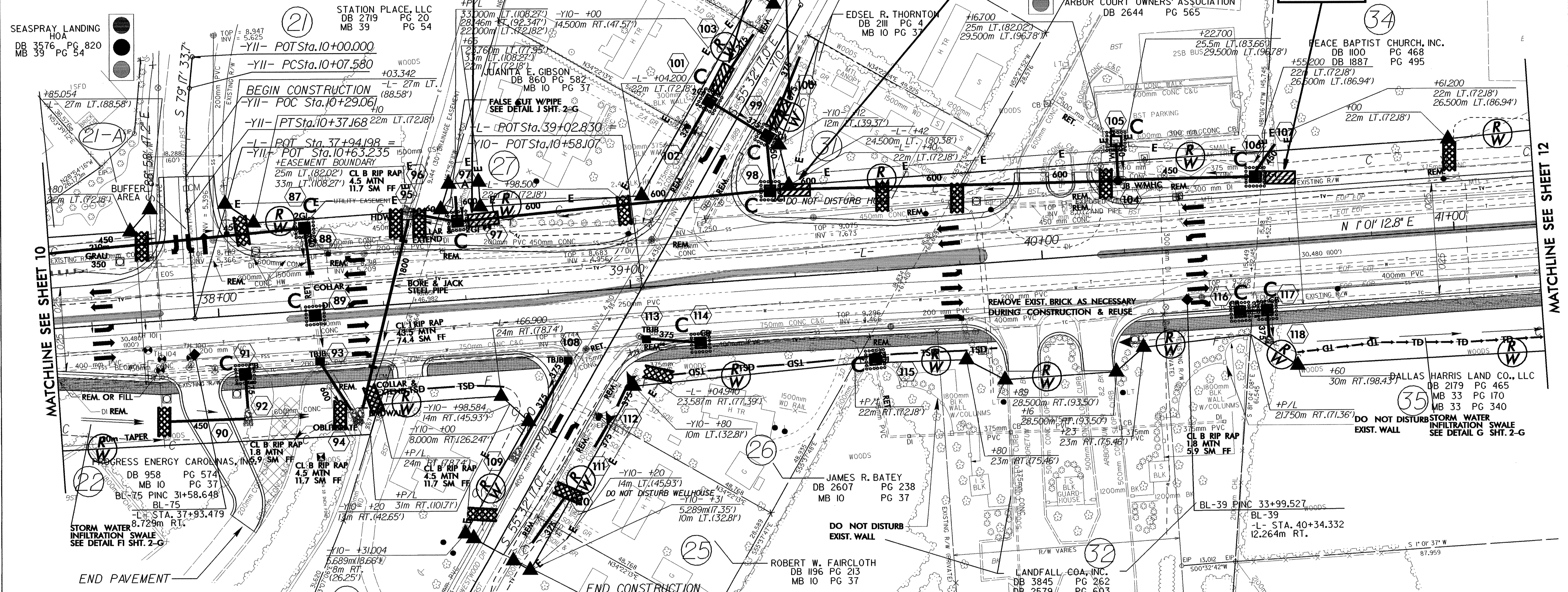
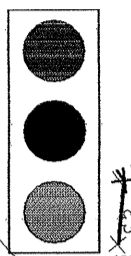
4.0 x 2.0 x 1

4.0 x 2.0 x 1

6.0 x 2.0 x 1

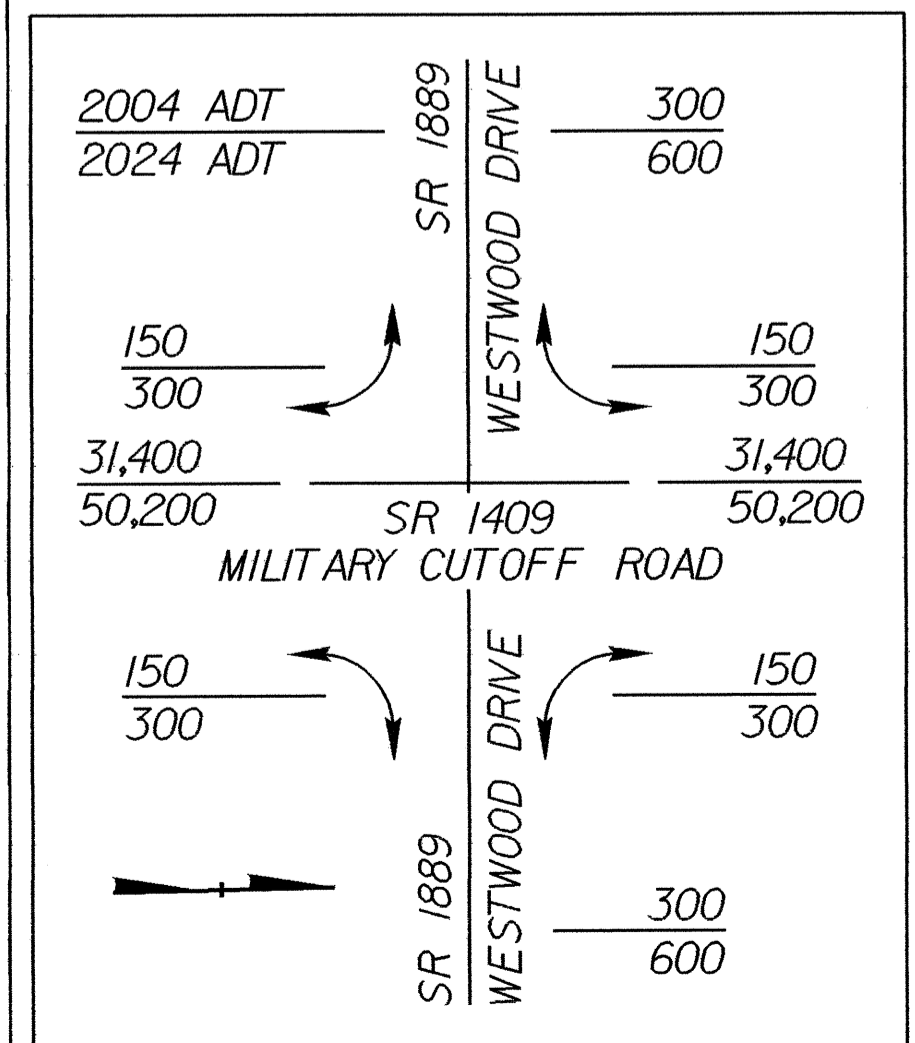
6.0 x 2.0 x 1

SEASPRAY LANDING HOA
DB 3576 PG 820
MB 39 PG 54



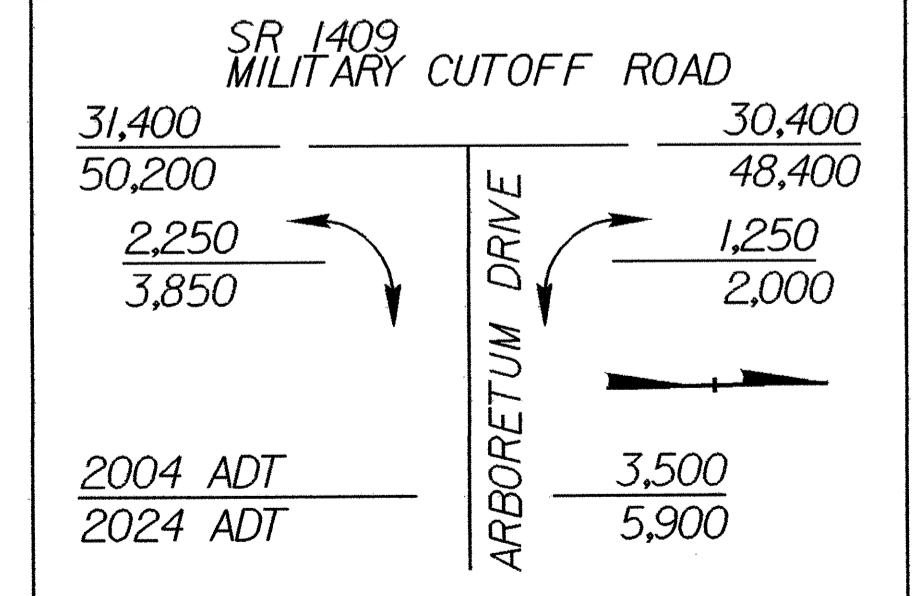
MATCHLINE SEE SHEET 10

MATCHLINE SEE SHEET 12



LEGEND

- PAVEMENT REMOVAL
- BIKE PATH
- PROPOSED 125mm CONCRETE MONOLITHIC ISLAND (KEYED IN)



NOTE:
REMOVE EXISTING PAVEMENT UNDER PROPOSED GRASS ISLANDS THRU-OUT PROJECT

NOTE: SEE SHEET NO. 20 FOR -L- PROFILE
SEE SHEET NO. 25 FOR -Y10- PROFILE
SEE SHEET 2-0 FOR INTERSECTION DETAIL OF -Y10- & -Y11-