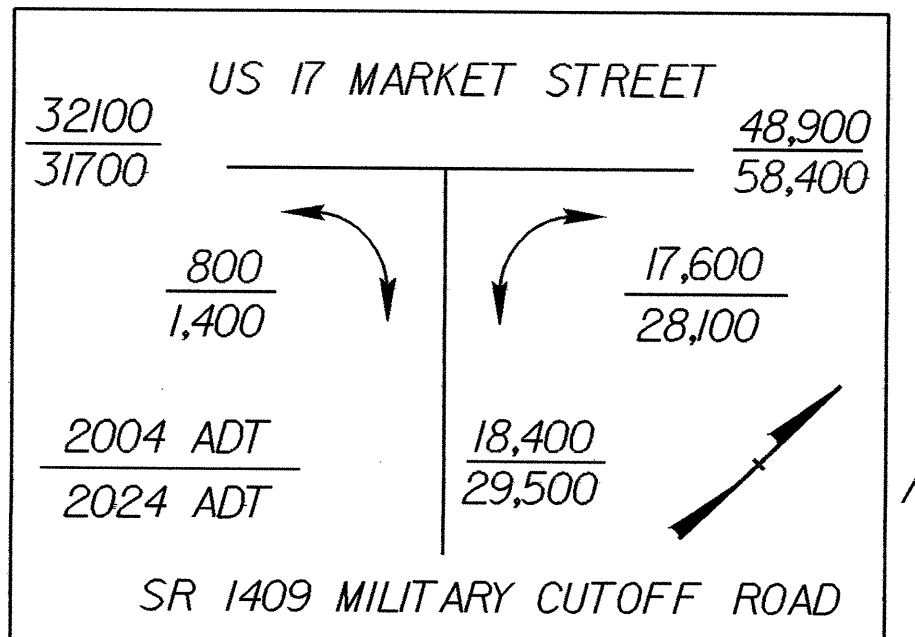
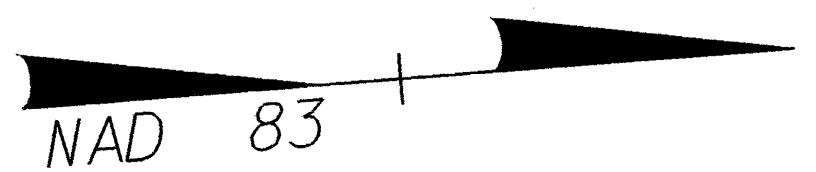
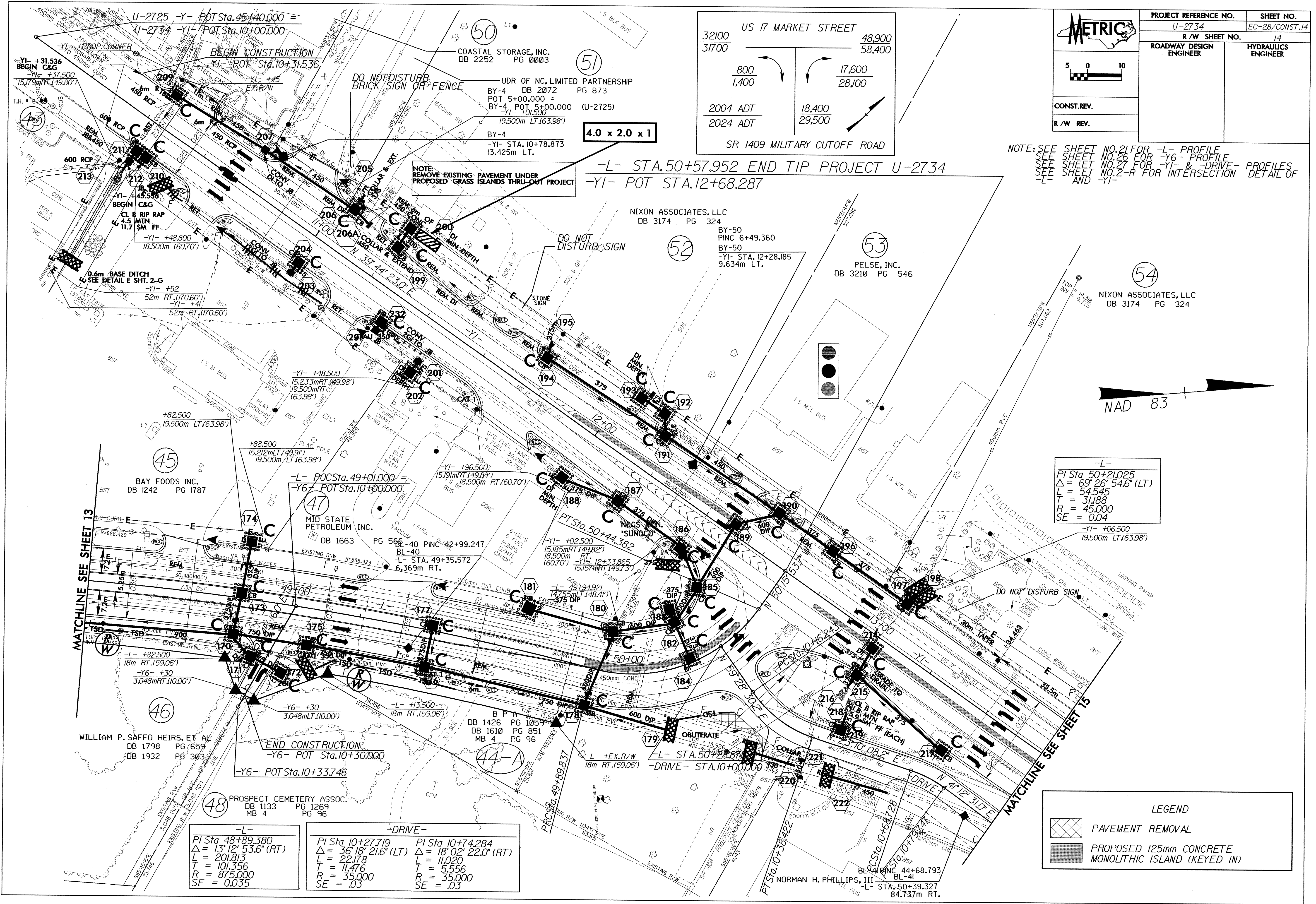


PROJECT REFERENCE NO.	SHEET NO.
U-2734	EC-28/CONST.14
R/W SHEET NO.	14
ROADWAY DESIGN ENGINEER	HYDRAULICS ENGINEER
CONST. REV.	
R/W REV.	



NOTE: SEE SHEET NO. 21 FOR -L- PROFILE
 SEE SHEET NO. 26 FOR -Y6- PROFILE
 SEE SHEET NO. 27 FOR -Y1- & -DRIVE- PROFILES
 SEE SHEET NO. 2-R FOR INTERSECTION DETAIL OF
 -L- AND -Y1-

-L- STA. 50+57.952 END TIP PROJECT U-2734
 -Y1- POT STA. 12+68.287



-L-
 PI Sta 50+21.025
 $\Delta = 69^\circ 26' 54.6''$ (LT)
 L = 545.45
 T = 31.88
 R = 45.000
 SE = 0.04

-L- PI Sta 48+89.380 $\Delta = 13^\circ 12' 53.6''$ (RT) L = 201.813 T = 101.356 R = 875.000 SE = 0.035	-DRIVE- PI Sta 10+27.719 $\Delta = 36^\circ 18' 21.6''$ (LT) L = 22.178 T = 11.476 R = 35.000 SE = .03	PI Sta 10+74.284 $\Delta = 18^\circ 02' 22.0''$ (RT) L = 11.020 T = 5.556 R = 35.000 SE = .03
---	--	--

LEGEND

	PAVEMENT REMOVAL
	PROPOSED 125mm CONCRETE MONOLITHIC ISLAND (KEYED IN)