
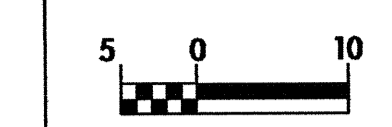
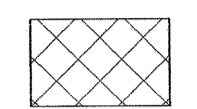
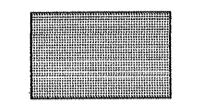
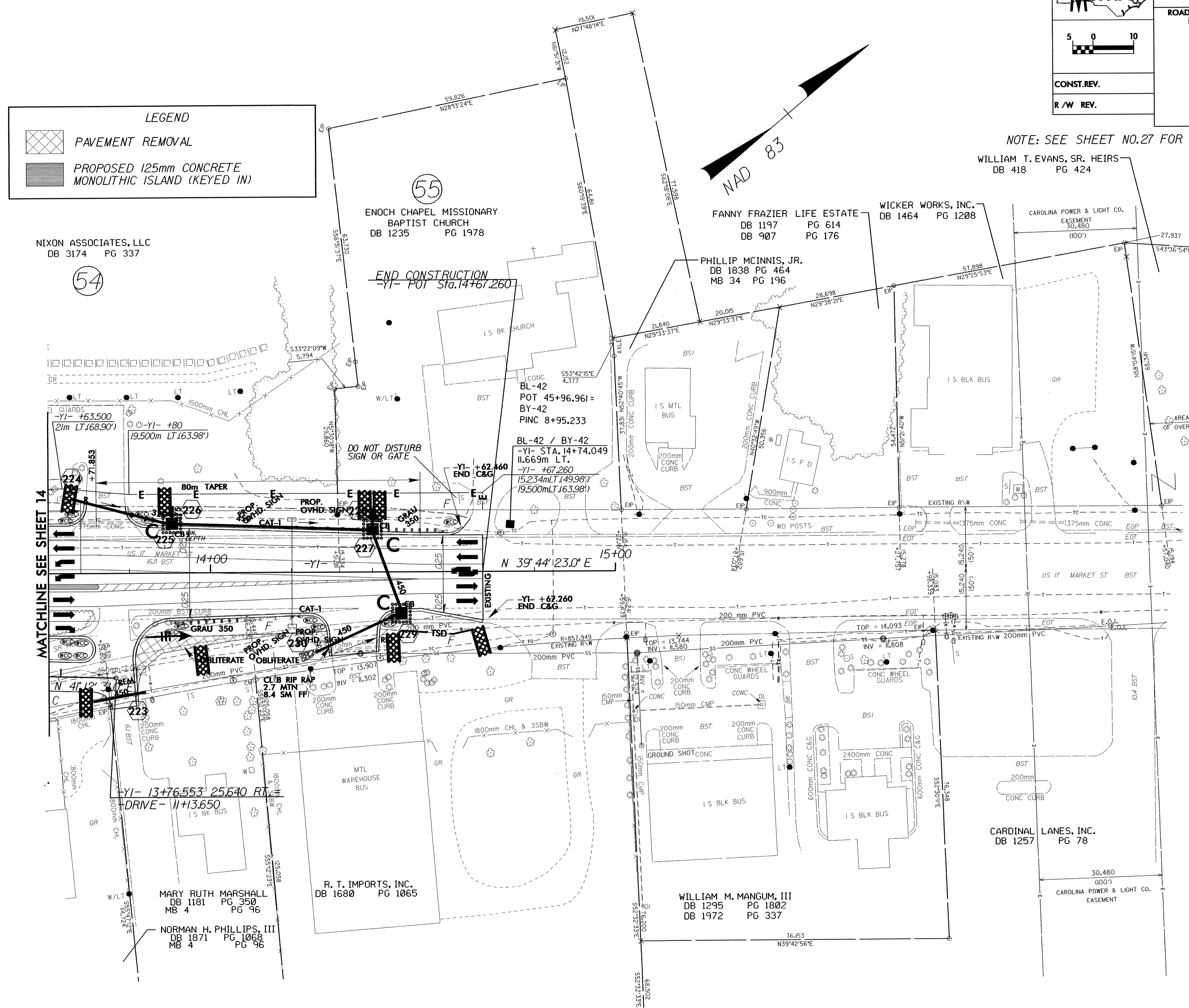


|  |                       |                |
|--|-----------------------|----------------|
|  | PROJECT REFERENCE NO. | SHEET NO.      |
|  | U-2734                | EC-29/CONST.15 |
|  | R/W SHEET NO.         | 15             |
| ROADWAY DESIGN ENGINEER  | HYDRAULICS ENGINEER   |                |
| CONST. REV.  |                       |                |
| R/W REV.   |                       |                |



| LEGEND  |  |
|---|--|
|  | PAVEMENT REMOVAL                                     |
|  | PROPOSED 125mm CONCRETE MONOLITHIC ISLAND (KEYED IN) |

NOTE: SEE SHEET NO. 27 FOR -YI- & -DRIVE- PROFILES  
 WILLIAM T. EVANS, SR. HEIRS  
 DB 418 PG 424



NIXON ASSOCIATES, LLC  
 DB 3174 PG 337

54

MATCHLINE SEE SHEET 14

-YI- 13+76.553 25.640 RT.  
 DRIVE- 11+13.650

MARY RUTH MARSHALL  
 DB 1181 PG 350  
 MB 4 PG 96

NORMAN H. PHILLIPS, III  
 DB 1871 PG 1068  
 MB 4 PG 96

R. T. IMPORTS, INC.  
 DB 1680 PG 1065

WILLIAM M. MANGUM, III  
 DB 1295 PG 1802  
 DB 1972 PG 337

CARDINAL LANES, INC.  
 DB 1257 PG 78