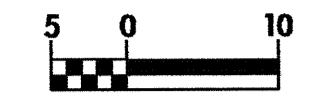
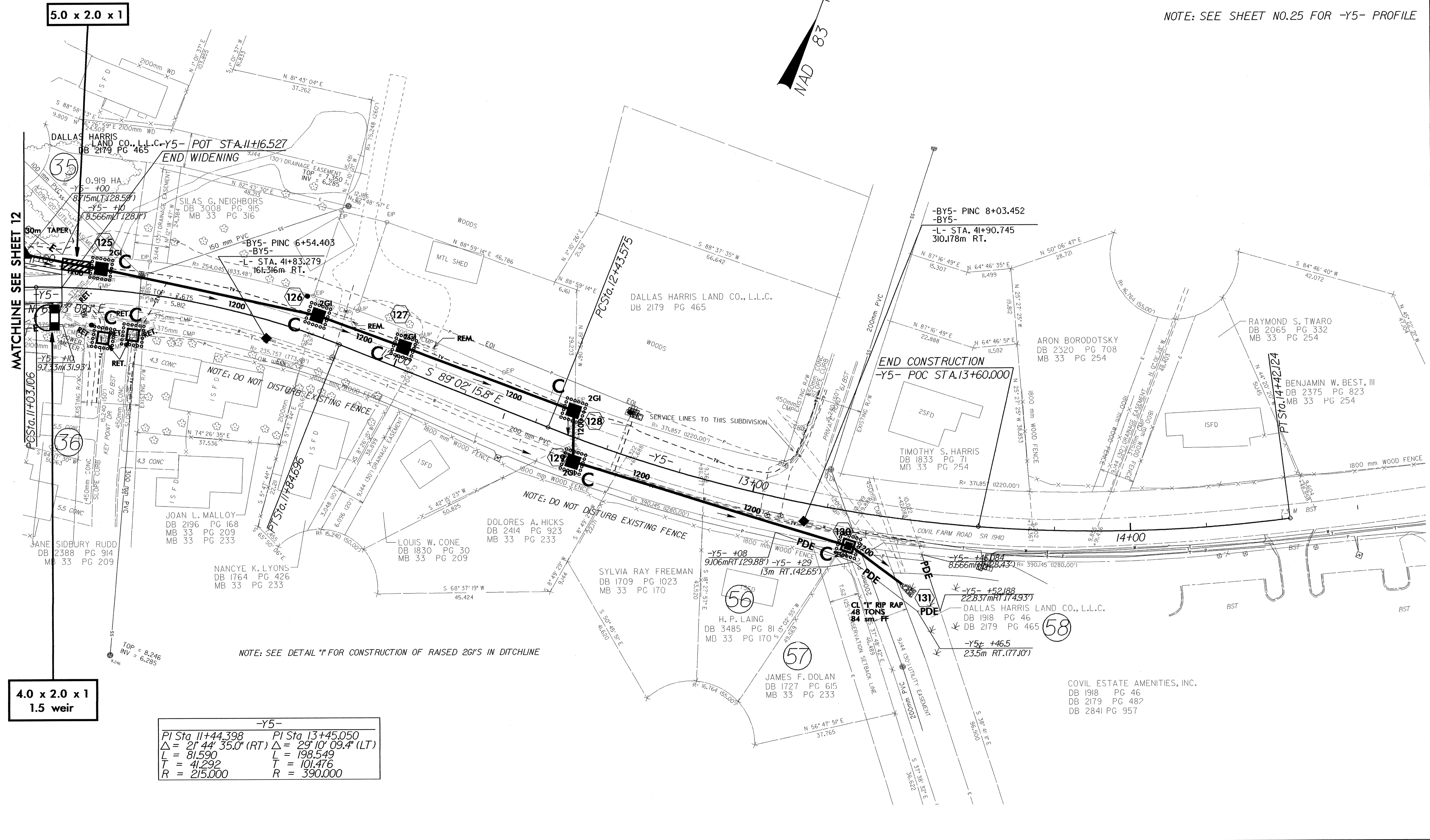
	PROJECT REFERENCE NO.	SHEET NO.
	U-2734	EC-30/CONST.16
	R/W SHEET NO.	16
	ROADWAY DESIGN ENGINEER	HYDRAULICS ENGINEER
CONST.REV.		
R/W REV.		

NOTE: SEE SHEET NO.25 FOR -Y5- PROFILE



5.0 x 2.0 x 1

MATCHLINE SEE SHEET 12

4.0 x 2.0 x 1
1.5 weir

-Y5-	
PI Sta 11+44.398	PI Sta 13+45.050
$\Delta = 21^{\circ} 44' 35.0''$ (RT)	$\Delta = 29^{\circ} 10' 09.4''$ (LT)
L = 81.590	L = 198.549
T = 41.292	T = 101.476
R = 215.000	R = 390.000

NOTE: SEE DETAIL *I* FOR CONSTRUCTION OF RAISED 26'S IN DITCHLINE