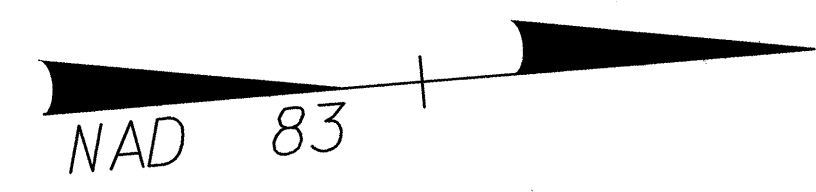
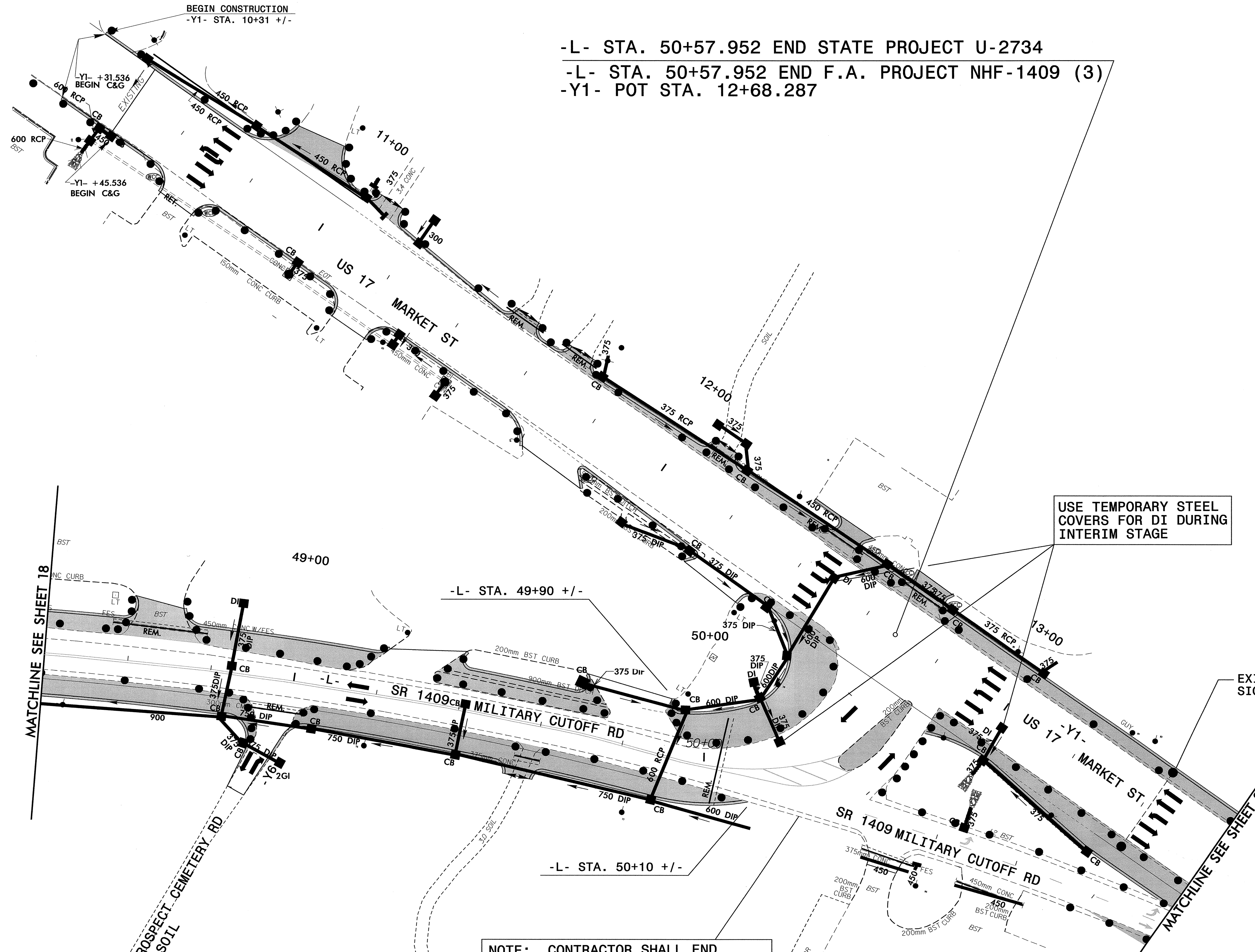




PROJ. REFERENCE NO.	SHEET NO.
U-2734	TCP-19

-L- STA. 50+57.952 END STATE PROJECT U-2734
 -L- STA. 50+57.952 END F.A. PROJECT NHF-1409 (3)
 -Y1- POT STA. 12+68.287



USE TEMPORARY STEEL COVERS FOR DI DURING INTERIM STAGE

EXISTING OVERHEAD SIGN STRUCTURE

MATCHLINE SEE SHEET 18

MATCHLINE SEE SHEET 20

SEE DETAIL A SHEET TCP- 21 FOR TEMP. SIGNAL AND TRAFFIC PATTERN.

NOTE: CONTRACTOR SHALL END CONSTRUCTION OF THE WIDENING AND C & G ALONG THE RIGHT SIDE OF -L- AT AN APPROPRIATE LOCATION SO AS TO MAINTAIN NORTHBOUND -L- LINE TRAFFIC ONTO NORTHBOUND -Y1- UNTIL NORTHBOUND -L- LINE TRAFFIC IS SHIFTED TO THE NEW ALIGNMENT SHOWN IN PHASE I, STEP 3C.

APPROVED: _____ DATE: _____

SEAL

2/4/04

SEPI ENGINEERING GROUP
 2300 Rexwoods Drive
 Suite 370
 Raleigh, NC 27607
 Tel: 919-789-9977 Fax: 919-9591

PHASE I STEP 3B		REVISIONS	
SCALE: NONE	DATE: 12/03		CADD FILE
DWG. BY: NH	DESIGN BY: RLW		
REVIEWED BY: SSA			