

METRICS

5 0 10

CONST. REV.

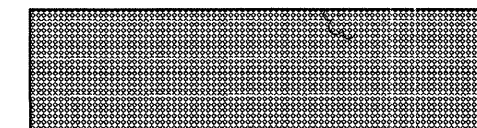
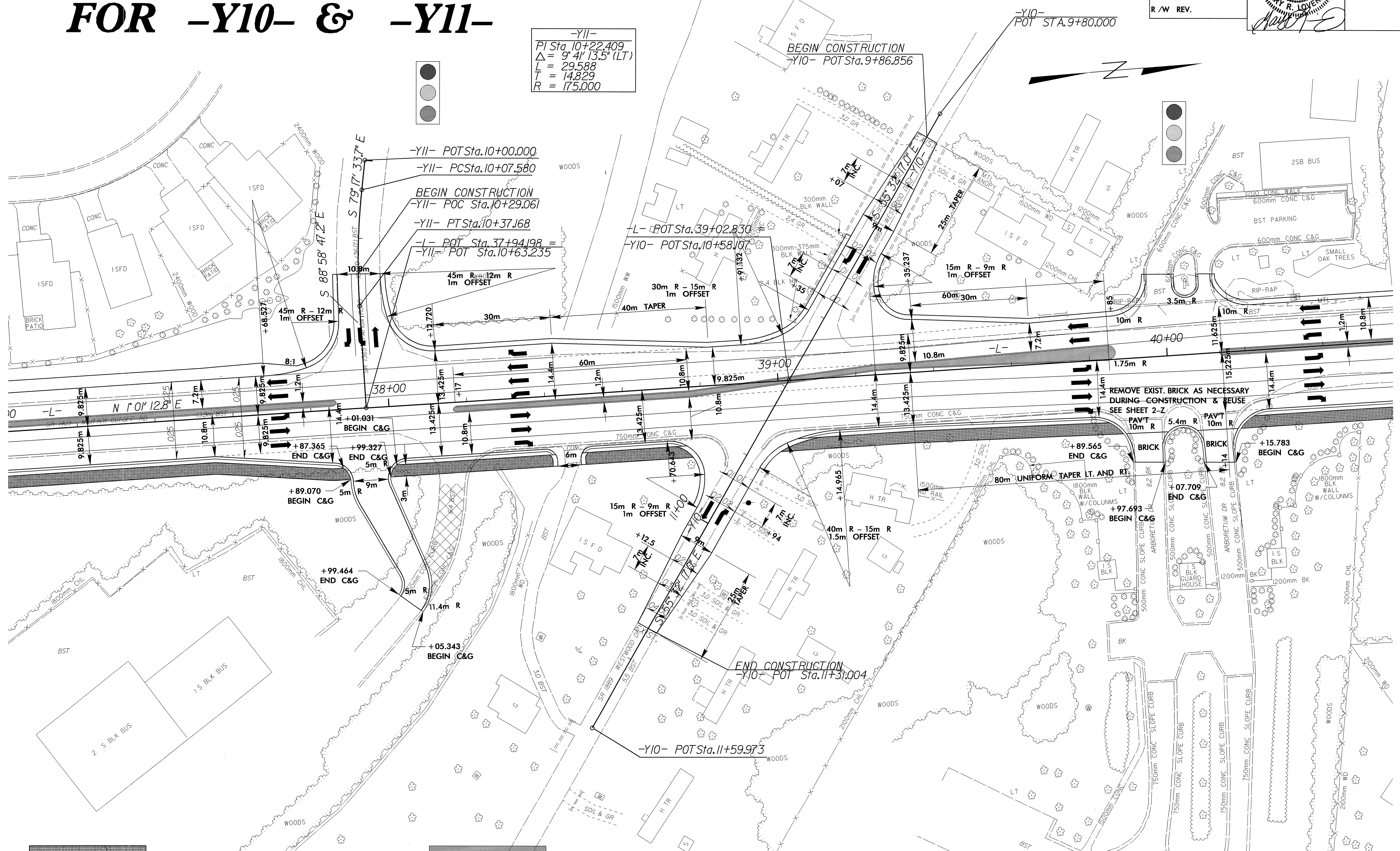
R/W REV.

PROJECT REFERENCE NO. U-2734	SHEET NO. 2-0
R/W SHEET NO.	
ROADWAY DESIGN ENGINEER	HYDRAULICS ENGINEER

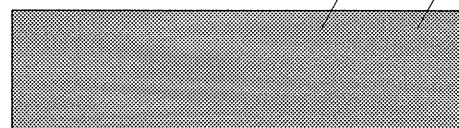
DETAIL OF INTERSECTION FOR -Y10- & -Y11-

NOTE: SEE SHEET 11 FOR ALIGNMENT
SEE SHEET 20 FOR PROFILE OF -L-
SEE SHEET 25 FOR PROFILE OF -Y10-

-Y11-
PI Sta. 10+22.409
 $\Delta = 9^{\circ} 41' 13.5''$ (LT)
L = 29.588
R = 14.829
R = 175.000



MAINTENANCE BY OTHERS



PROPOSED 125mm MONOLITHIC CONCRETE ISLAND (SURFACE MOUNTED)