
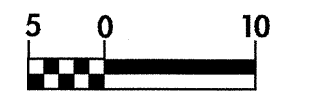
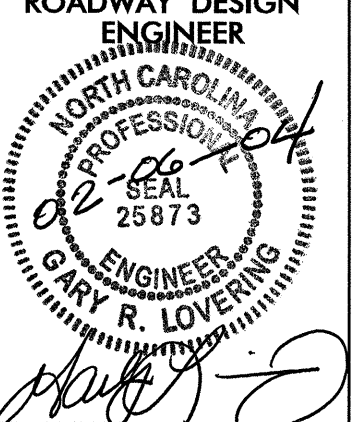
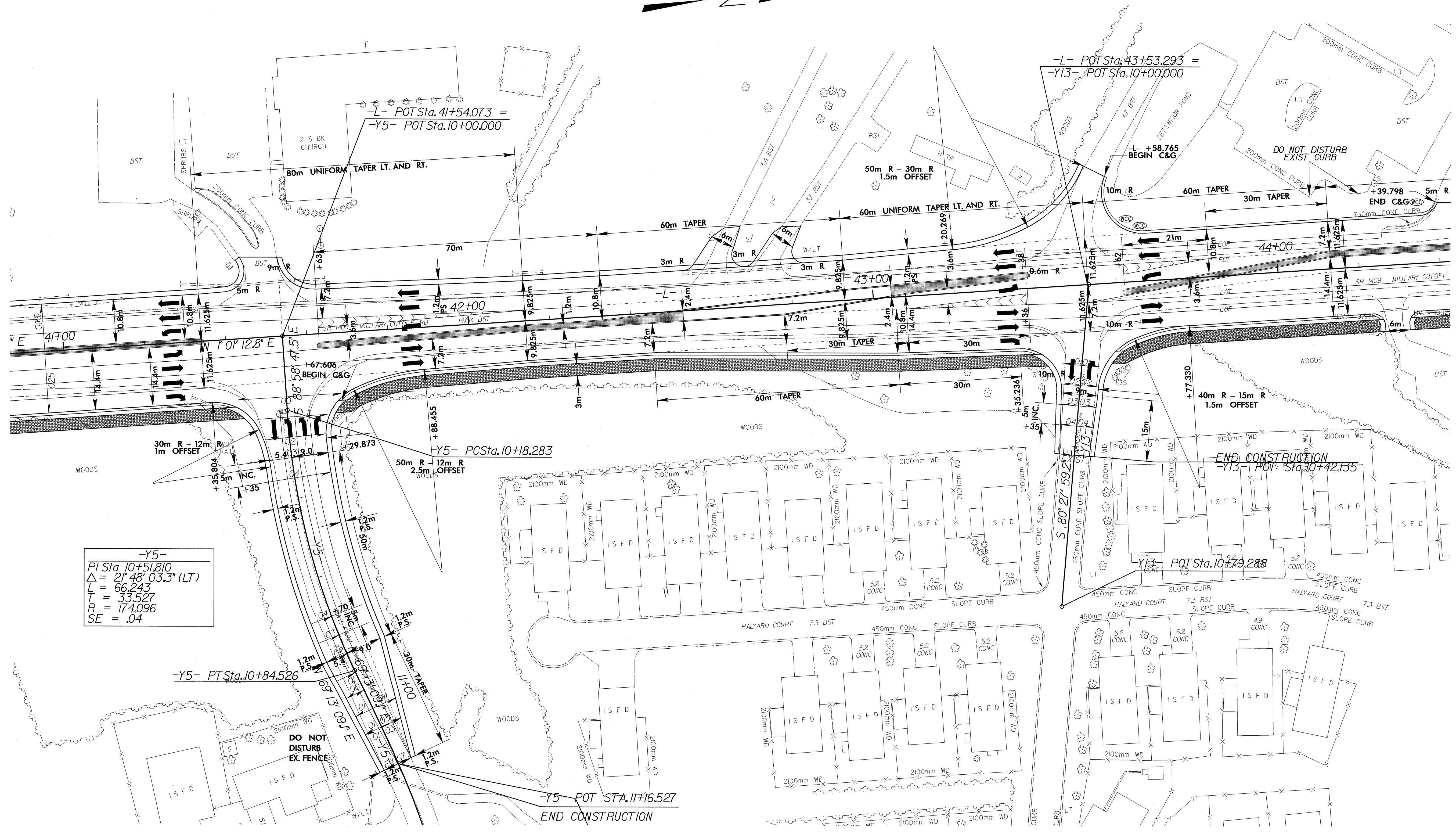


# DETAIL OF INTERSECTION FOR -Y5- & -Y13-

NOTE: FOR -L- ALIGNMENT SEE SHEET NO.12  
FOR PROFILE OF -L- SEE SHEETS NO.20 & 21  
FOR PROFILE OF -Y5- SEE SHEET NO.25  
FOR PROFILE OF -Y13- SEE SHEET NO.26

  CONST.REV. R/W REV.	PROJECT REFERENCE NO. U-2734	SHEET NO. 2-P
	R/W SHEET NO.	
	ROADWAY DESIGN ENGINEER  GARY R. LOVERING	HYDRAULICS ENGINEER

 PROPOSED 125 mm CONCRETE ISLAND (SURFACE MOUNTED)  
 MAINTENANCE BY OTHERS



-Y5-  
 PI Sta 10+51.810  
 $\Delta = 21^\circ 48' 03.3''$  (LT)  
 L = 66.243  
 T = 33.527  
 R = 174.096  
 SE = .04