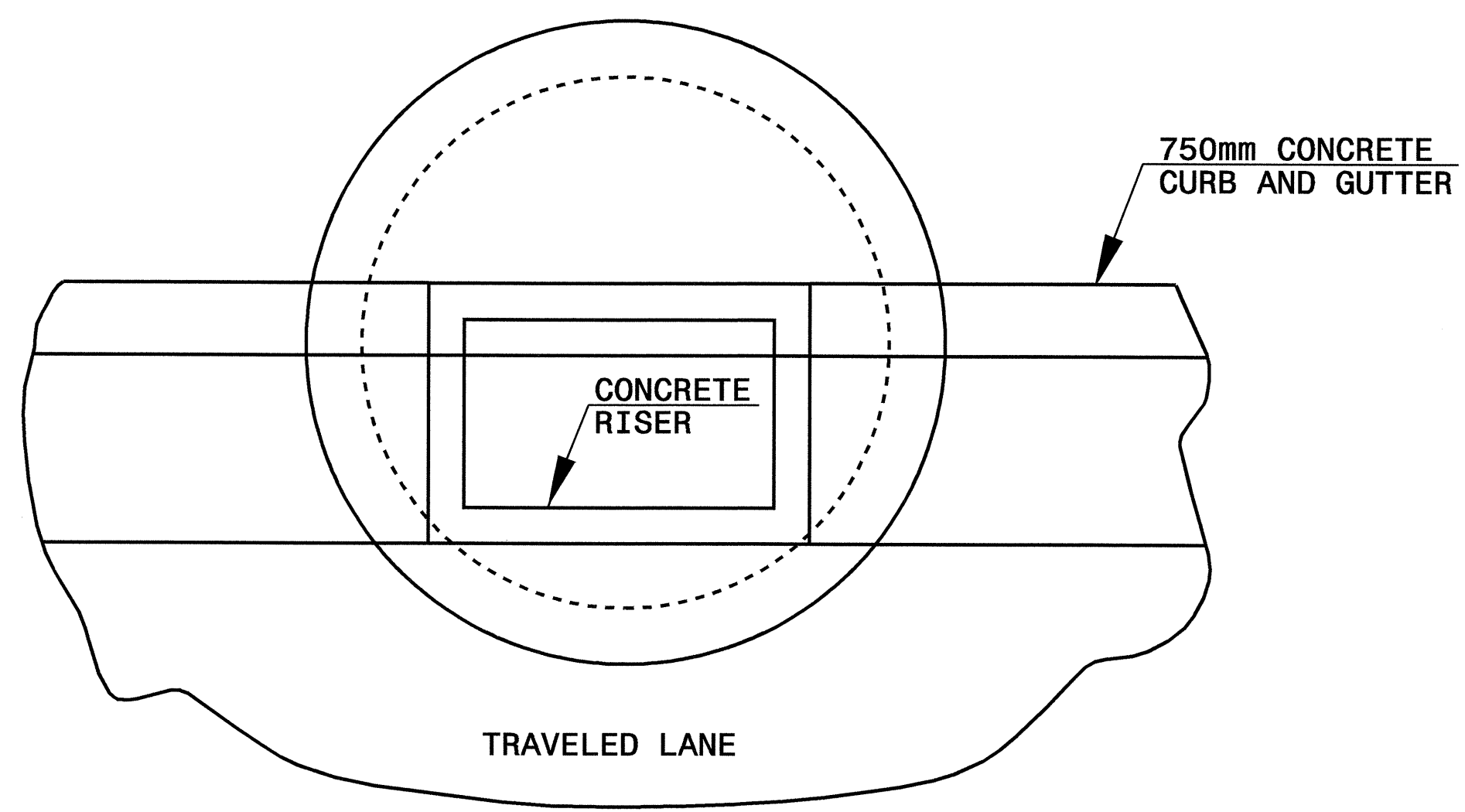
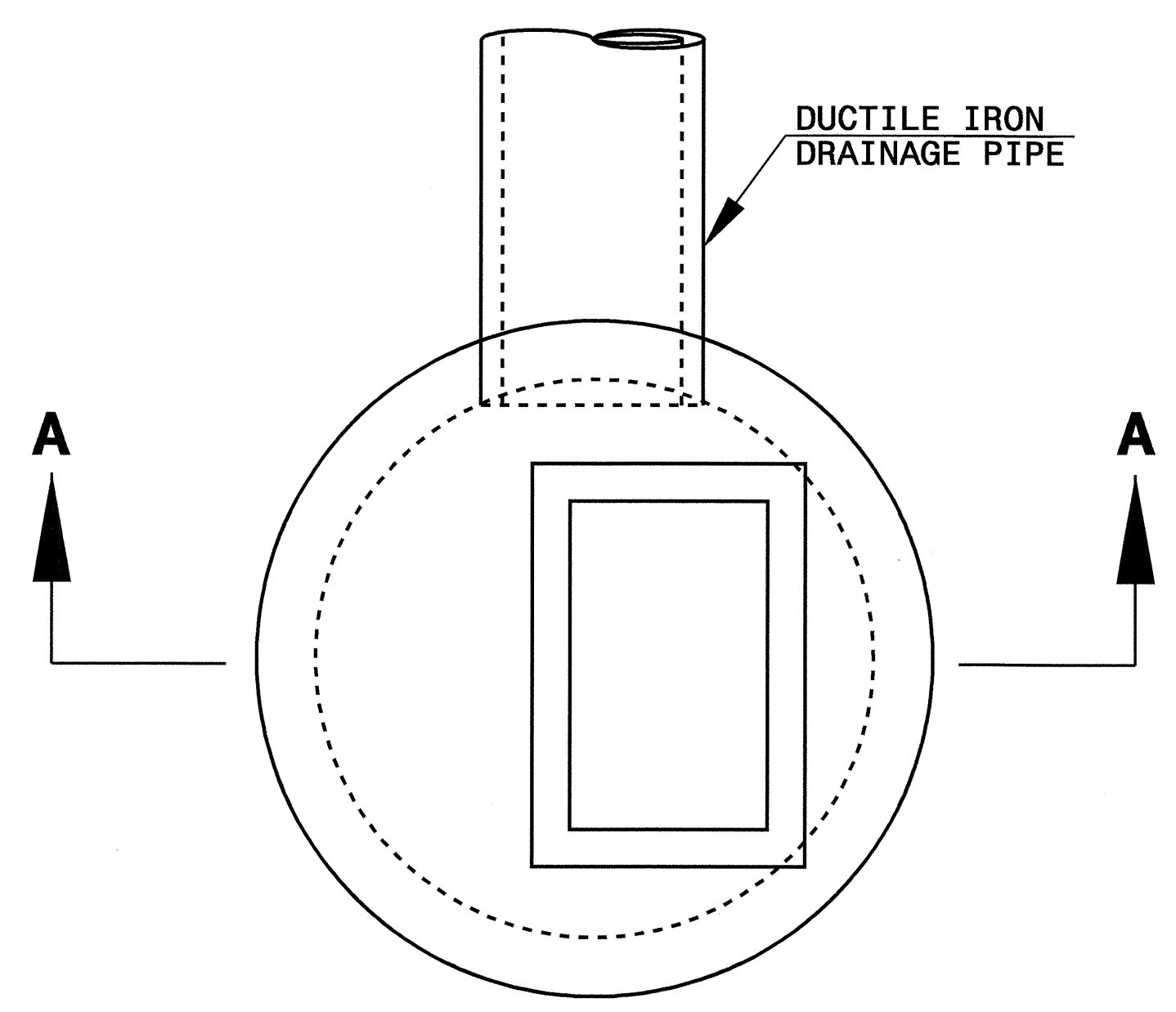


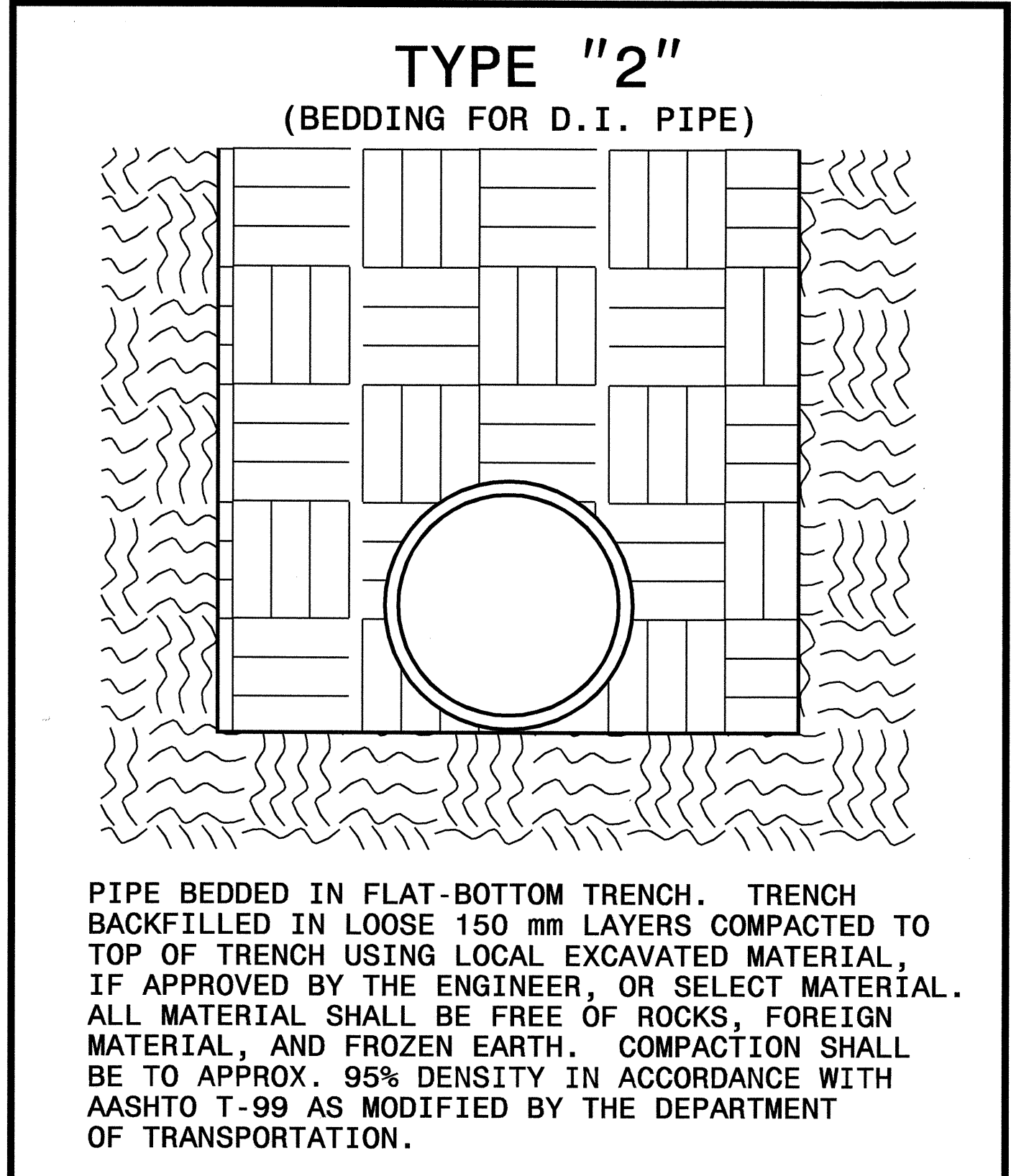
**SECTION A-A**



**PLAN VIEW SHOWING  
CATCH BASIN CONFIGURATION**



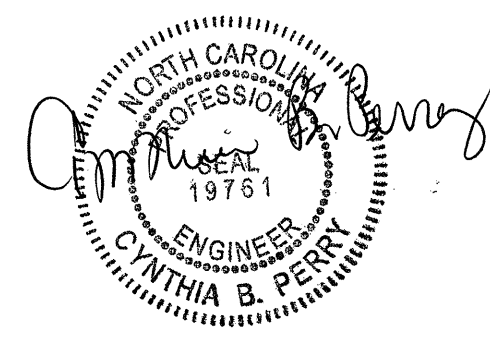
**PLAN**



PIPE BEDDED IN FLAT-BOTTOM TRENCH. TRENCH BACKFILLED IN LOOSE 150 mm LAYERS COMPACTED TO TOP OF TRENCH USING LOCAL EXCAVATED MATERIAL, IF APPROVED BY THE ENGINEER, OR SELECT MATERIAL. ALL MATERIAL SHALL BE FREE OF ROCKS, FOREIGN MATERIAL, AND FROZEN EARTH. COMPACTION SHALL BE TO APPROX. 95% DENSITY IN ACCORDANCE WITH AASHTO T-99 AS MODIFIED BY THE DEPARTMENT OF TRANSPORTATION.

NOTES:  
USE 1200mm DIAMETER PRECAST UNITS.  
(ROADWAY STANDARD DRAWING NO. 840.52)

STR. NO. 170 thru 189



**DESIGN SERVICES UNIT  
STANDARDS AND SPECIAL DESIGN**  
Office 919-250-4128 FAX 919-250-4119

**DETAIL SHEET FOR SPECIAL  
SEALED DRAINAGE SYSTEM**

ORIGINAL BY: E.E. WARD DATE: 9-11-02  
MODIFIED BY: *[Signature]* DATE: *[Blank]*  
CHECKED BY: *[Signature]* DATE: 2/04  
FILE SPEC.: usr/details/stand/sealedsystem.dgn

25-FEB-2004 10:41  
W:\Special Design\usr\environmental\sealedsystem.dgn  
ispell -AT 03203655