

6/10/93

	PROJECT REFERENCE NO.	SHEET NO.
	U-2734	8
	R/W SHEET NO.	8
	ROADWAY DESIGN ENGINEER	HYDRAULICS ENGINEER
		CONST. REV.
		R/W REV. 12/22/03

TGS Engineers
975 Walnut Street, Suite 141
Cary, NC 27511

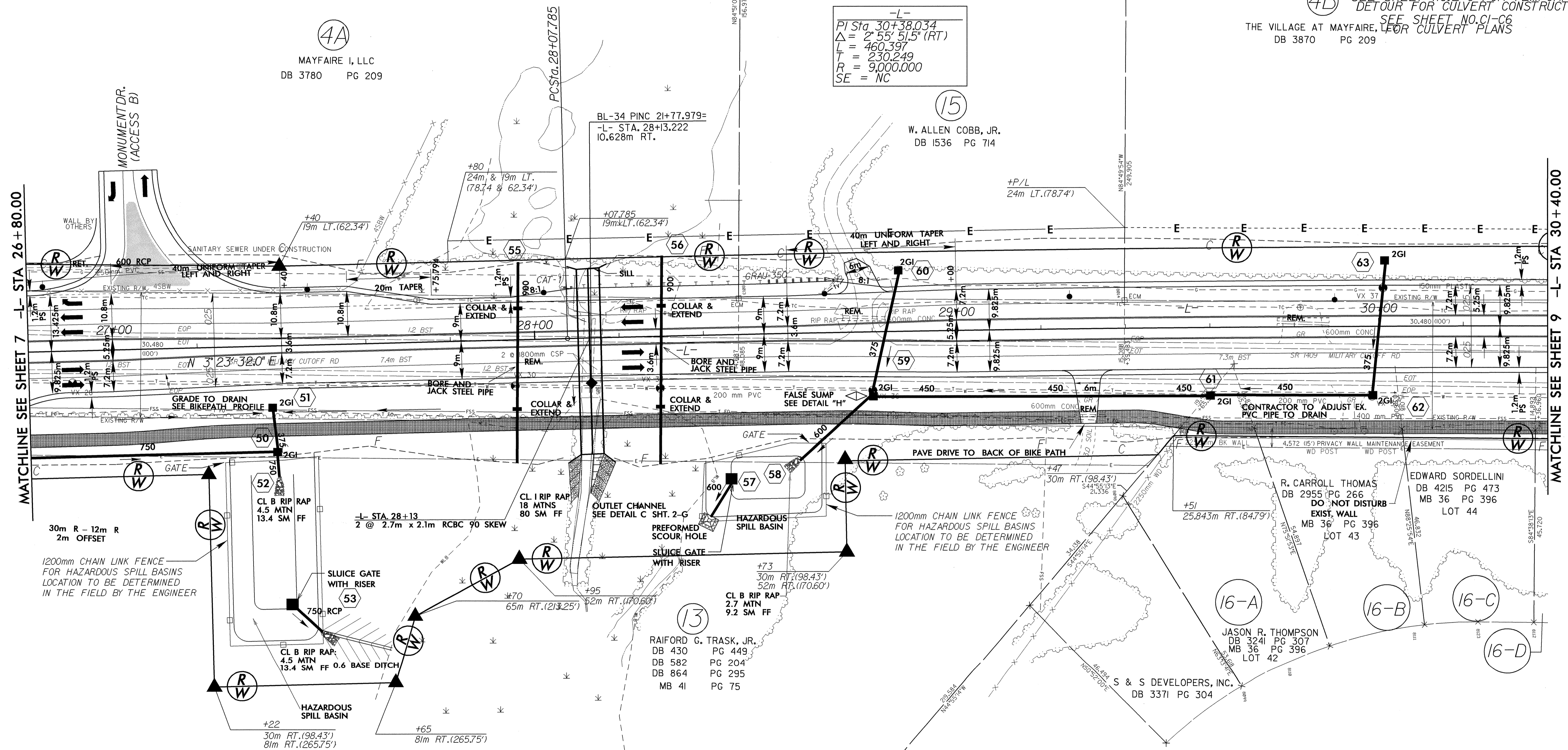
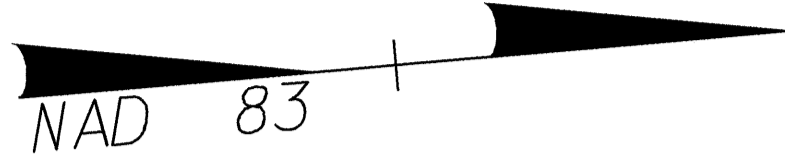
LEGEND

- BIKE PATH
- PROPOSED 125mm CONCRETE MONOLITHIC ISLAND (KEYED IN)

NOTE: REMOVE EXISTING PAVEMENT UNDER PROPOSED GRASS ISLANDS THRU-OUT PROJECT

NOTE: SEE SHEETS NO.18 & 19 FOR -L- PROFILE
SEE SHEET NO.23 FOR -BIKE- PROFILE
SEE SHEET NO.2-K AND 2-L FOR -BIKE- ALIGNMENT
SEE SHEET NO.2-S FOR HAZARDOUS SPILL RETENTION BASIN
(4B) SEE SHEET NO.2-U FOR TEMPORARY DETOUR FOR CULVERT CONSTRUCTION
SEE SHEET NO.C1-C6 FOR CULVERT PLANS

THE VILLAGE AT MAYFAIRE, LEOR CULVERT PLANS
DB 3870 PG 209



04-MAY-2004 11:30
Sahailey AT 11:30:25 2734-b.pat