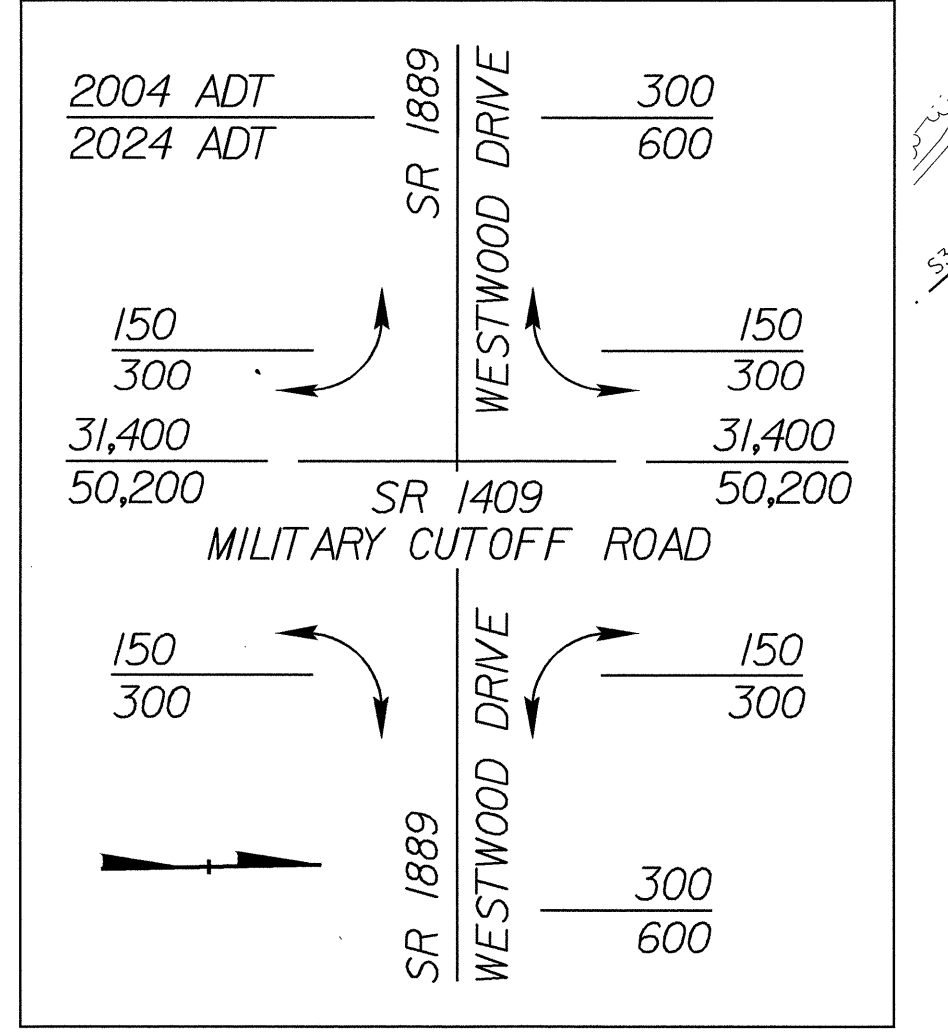
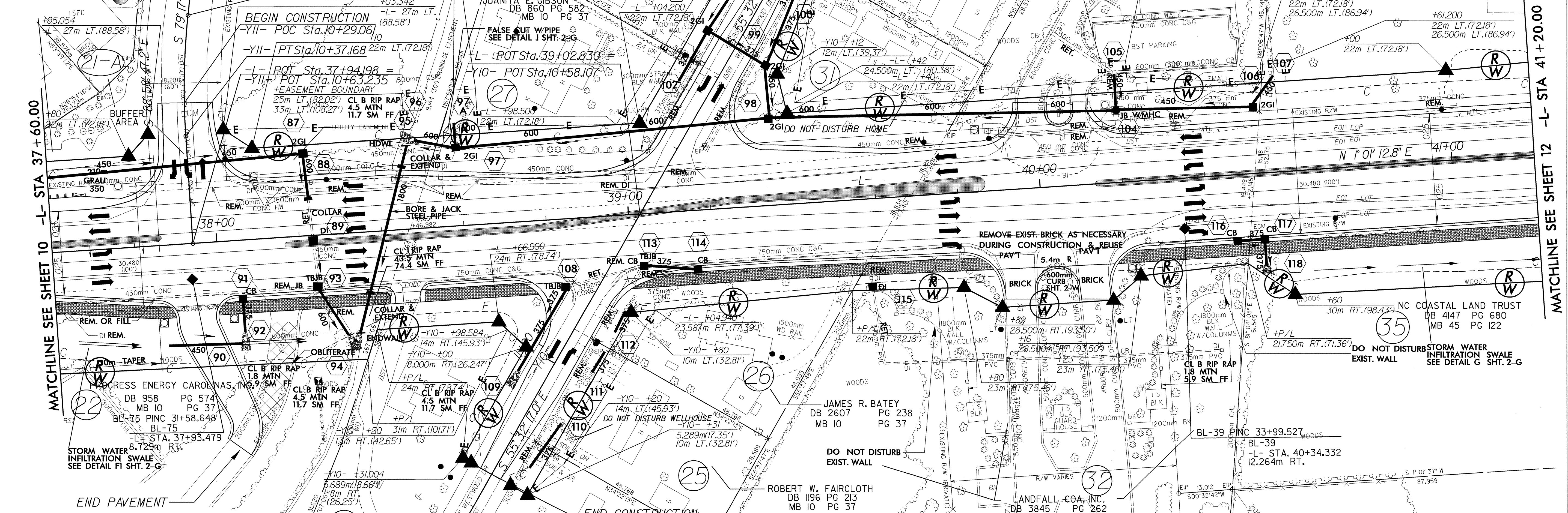
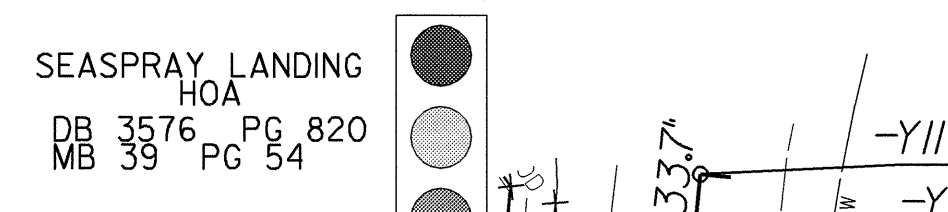
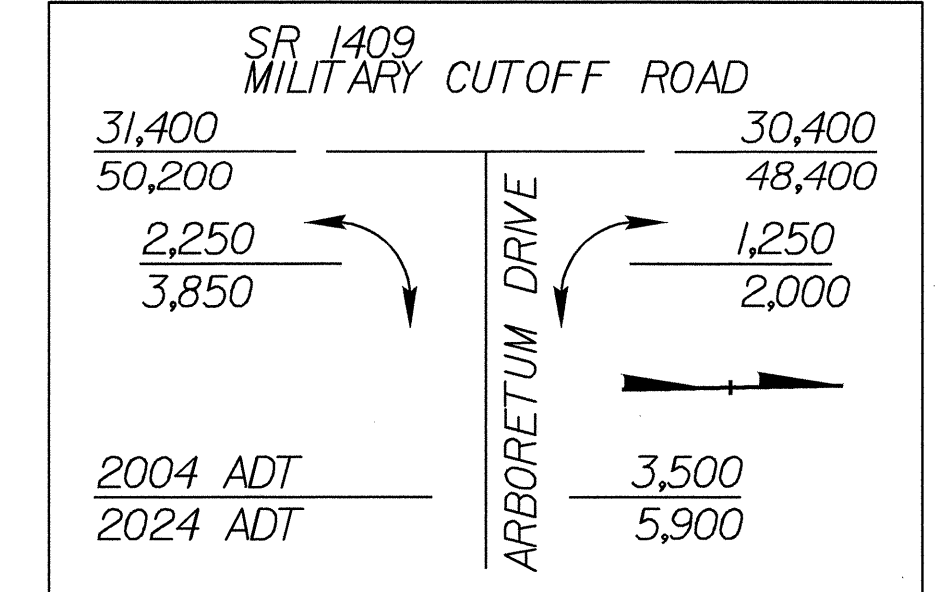


-Y11-
 PI Sta. 10+22.409
 $\Delta = 9' 4" 13.5" (LT)$
 $L = 29,588$
 $T = 14,829$
 $R = 175,000$



LEGEND

- PAVEMENT REMOVAL
- BIKE PATH
- PROPOSED 125mm CONCRETE MONOLITHIC ISLAND (KEYED IN)



NOTE:
 REMOVE EXISTING PAVEMENT UNDER
 PROPOSED GRASS ISLANDS THRU-OUT PROJECT

NOTE: SEE SHEET NO. 20 FOR -L- PROFILE
 SEE SHEET NO. 25 FOR -Y10- PROFILE
 SEE SHEET 2-0 FOR INTERSECTION
 DETAIL OF -Y10- & -Y11-
 SEE DETAIL SHEET 2-2 FOR BRICK ENTRANCE

04-MAY-2004 11:50 0734_11.psh
 6/10/09
 Sashley AT 11:52:45