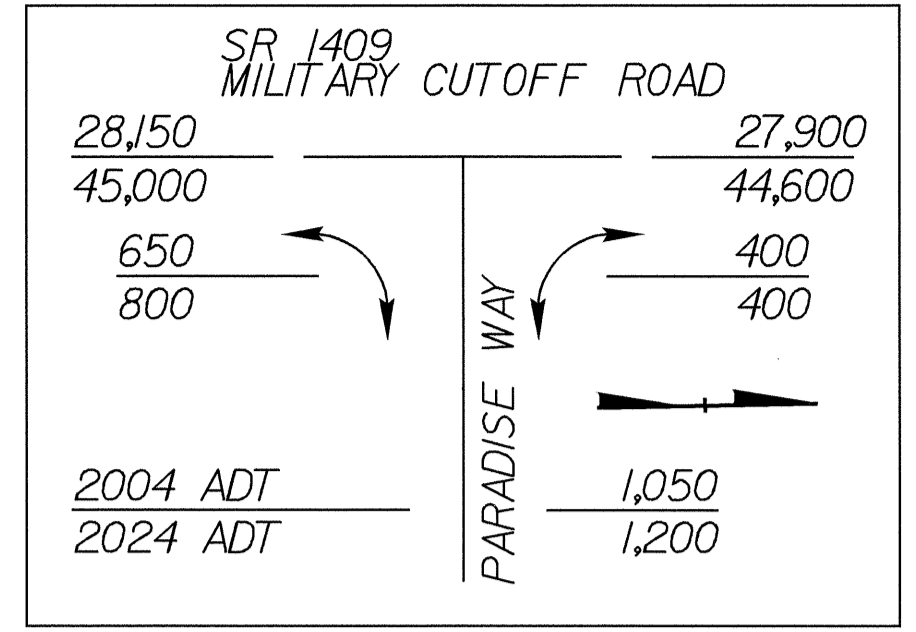
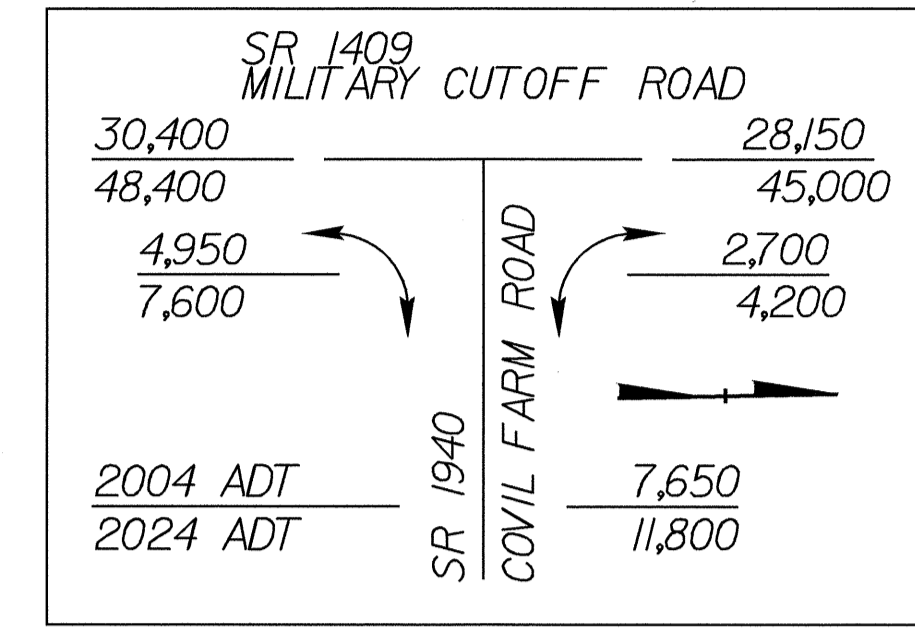
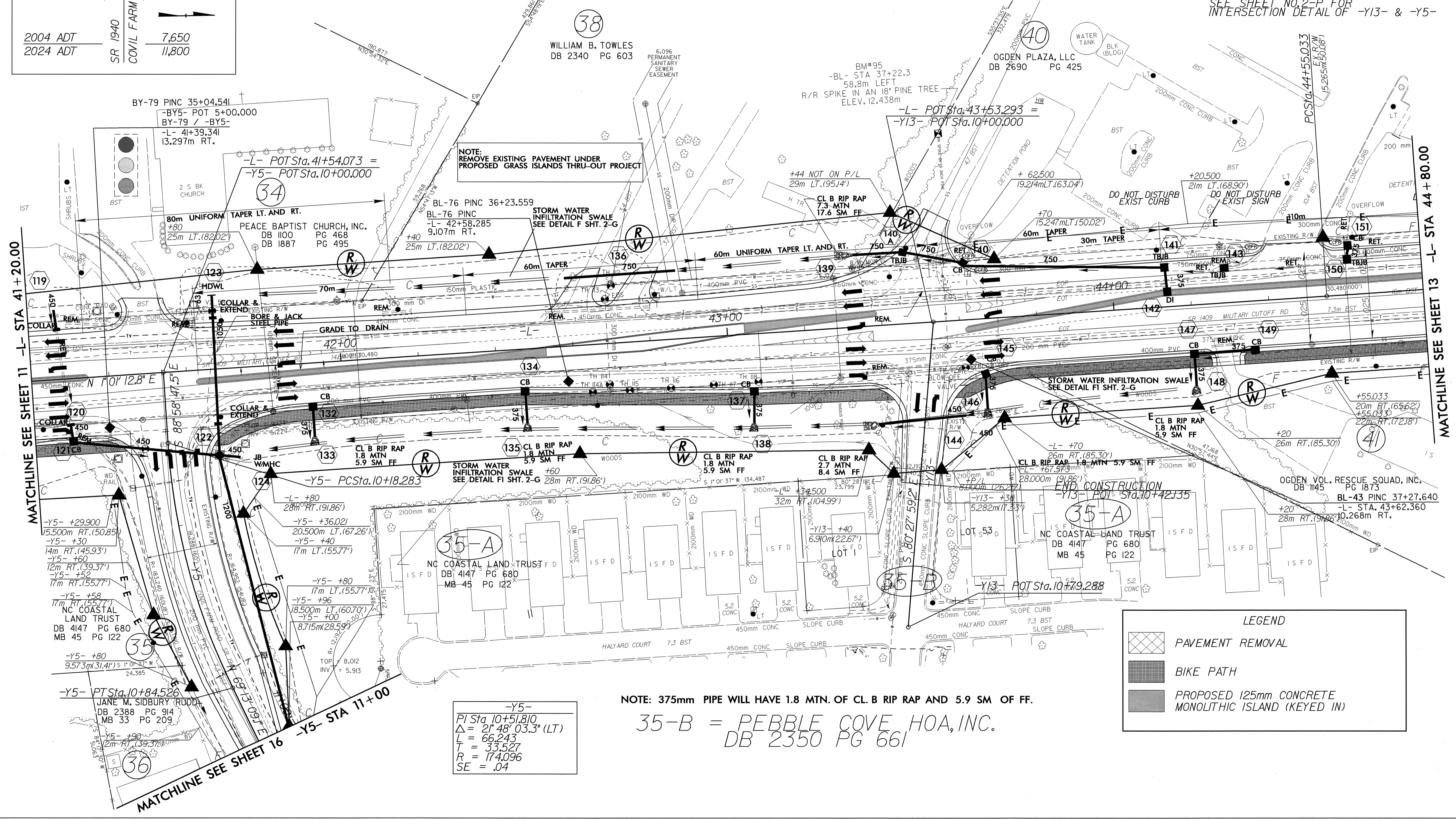


 5 0 10	PROJECT REFERENCE NO.	U-2734	SHEET NO.	12
	R/W SHEET NO.	12		
	ROADWAY DESIGN ENGINEER	GARY R. OWEN	HYDRAULICS ENGINEER	T. STEPHENS, JR.
	CONST. REV.			
R/W REV.	12/22/03			



-L-
 PI Sta 45+08.549
 $\Delta = 1' 45" 16.2" (LT)$
 $L = 107.023$
 $T = 53.516$
 $R = 3,495.000$
 $SE = NC$

NOTE: SEE SHEETS NO. 20 & 21 FOR -L- PROFILE
 SEE SHEET NO. 25 FOR -Y5- PROFILE
 SEE SHEET NO. 26 FOR -Y13- PROFILE
 SEE SHEET NO. 2-P FOR INTERSECTION DETAIL OF -Y13- & -Y5-



NAD 83

NOTE: REMOVE EXISTING PAVEMENT UNDER PROPOSED GRASS ISLANDS THRU-OUT PROJECT

NOTE: 375mm PIPE WILL HAVE 1.8 MTN. OF CL. B RIP RAP AND 5.9 SM OF FF.

35-B = PEBBLE COVE HOA, INC.
 DB 2350 PG 661

LEGEND

- PAVEMENT REMOVAL
- BIKE PATH
- PROPOSED 125mm CONCRETE MONOLITHIC ISLAND (KEYED IN)

MATCHLINE SEE SHEET 11 -L- STA 41 + 20.00

MATCHLINE SEE SHEET 13 -L- STA 44 + 80.00

MATCHLINE SEE SHEET 16 -Y5- STA 11 + 00

04-MAY-2004 11:53 11x17 2734-12.dwg S:\shahley\11-2734-12.dwg