

**NOTES:**

STIRRUPS IN CAP MAY BE SHIFTED AS NECESSARY TO CLEAR ANCHOR BOLTS.

HOOKS ON "V" BARS MAY BE TURNED AS NECESSARY FOR PLACING REINFORCING STEEL.

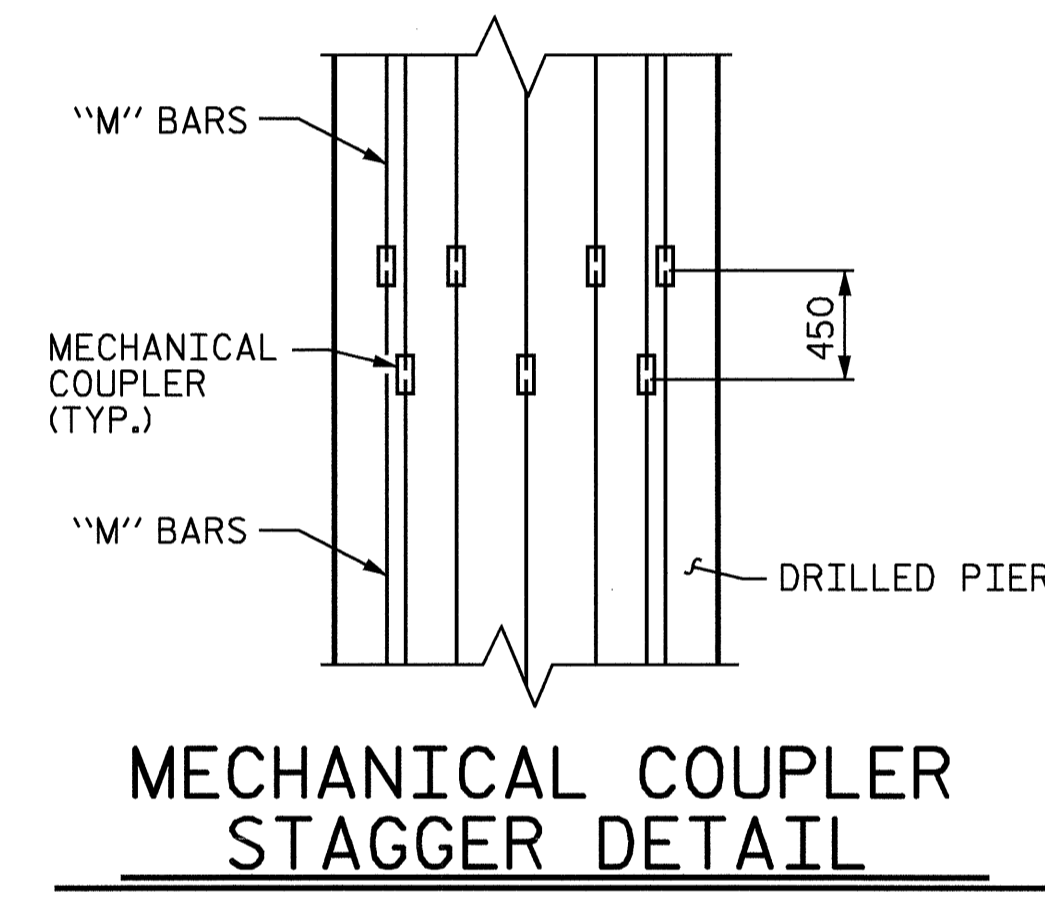
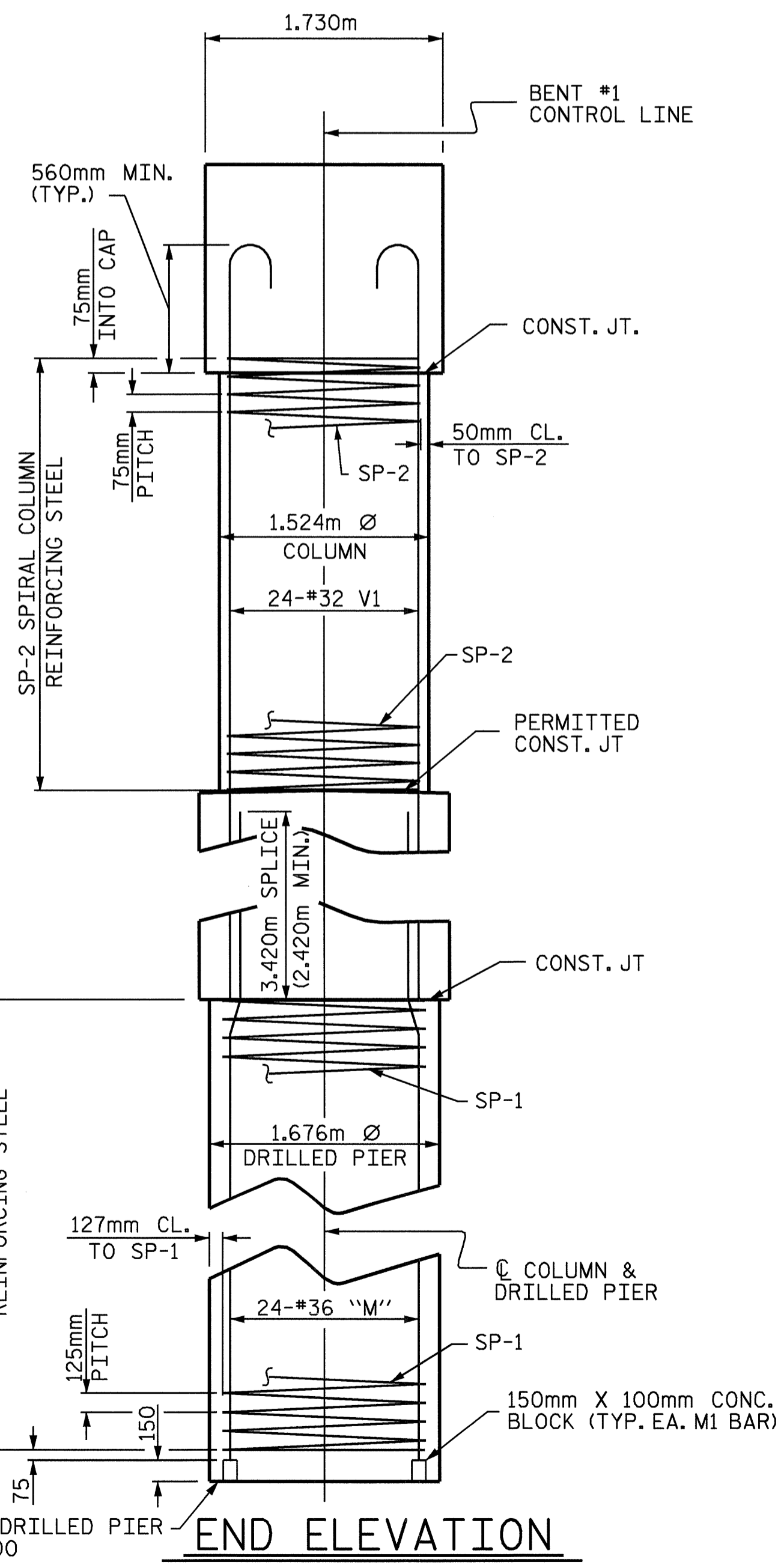
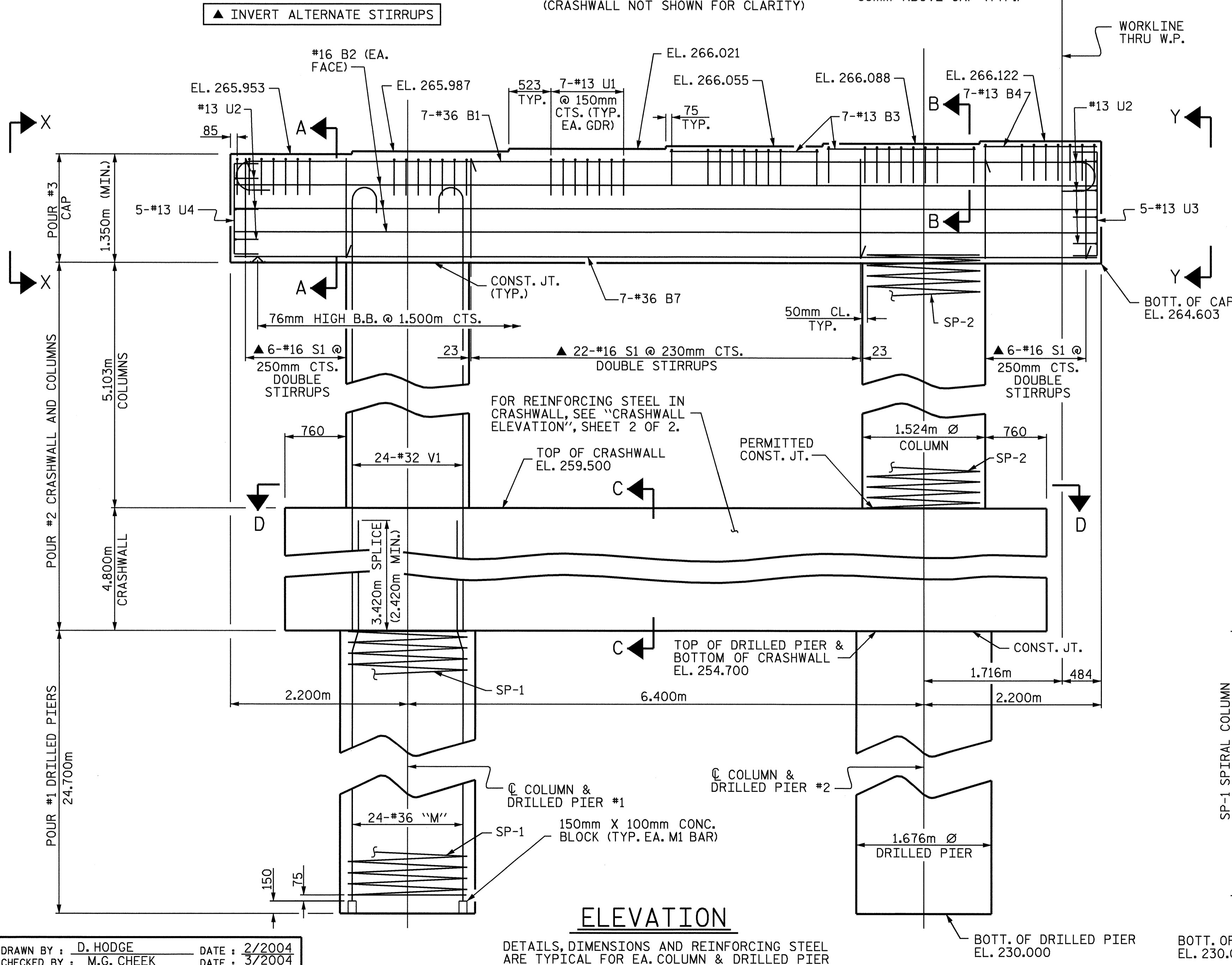
ALL STEEL IN THE DRILLED PIERS IS INCLUDED IN THE PAY ITEMS FOR "REINFORCING STEEL" AND "SPIRAL COLUMN REINFORCING STEEL".

THE CONTRACTOR'S ATTENTION IS CALLED TO THE FACT THAT THE LONGITUDINAL REINFORCEMENT FOR THE DRILLED PIERS IS DETAILED WITH ONE METER OF EXTRA LENGTH.

FOR DRILLED PIERS, SEE SPECIAL PROVISIONS.

FOR ALL SECTION VIEWS, SEE SHEET 2 OF 2.

MECHANICAL COUPLERS SHALL BE USED TO JOIN THE LONGITUDINAL DRILLED PIER REINFORCING STEEL. THE HEIGHT OF THE COUPLERS SHALL BE STAGGERED ON ALTERNATING BARS BY 300mm. SEE SPECIAL PROVISIONS FOR MECHANICAL BUTT SPLICING FOR REINFORCING STEEL.



PROJECT NO. R-2911A  
IREDELL COUNTY  
STATION: 39+62.402 -L-  
SHEET 1 OF 2

STATE OF NORTH CAROLINA DEPARTMENT OF TRANSPORTATION RALEIGH					SHEET NO.
SUBSTRUCTURE BENT #1 (LEFT LANE)					S-21
REVISIONS					TOTAL SHEETS
NO.	BY:	DATE:	NO.	BY:	DATE:
1			3		
2			4		
					106

DRAWN BY: D. HODGE DATE: 2/2004  
CHECKED BY: M.G. CHEEK DATE: 3/2004

24-JUN-2004 10:32  
W:\sdaquady\2911a\Final plans\2911a0102b.t.dgn  
clewis



STR #1