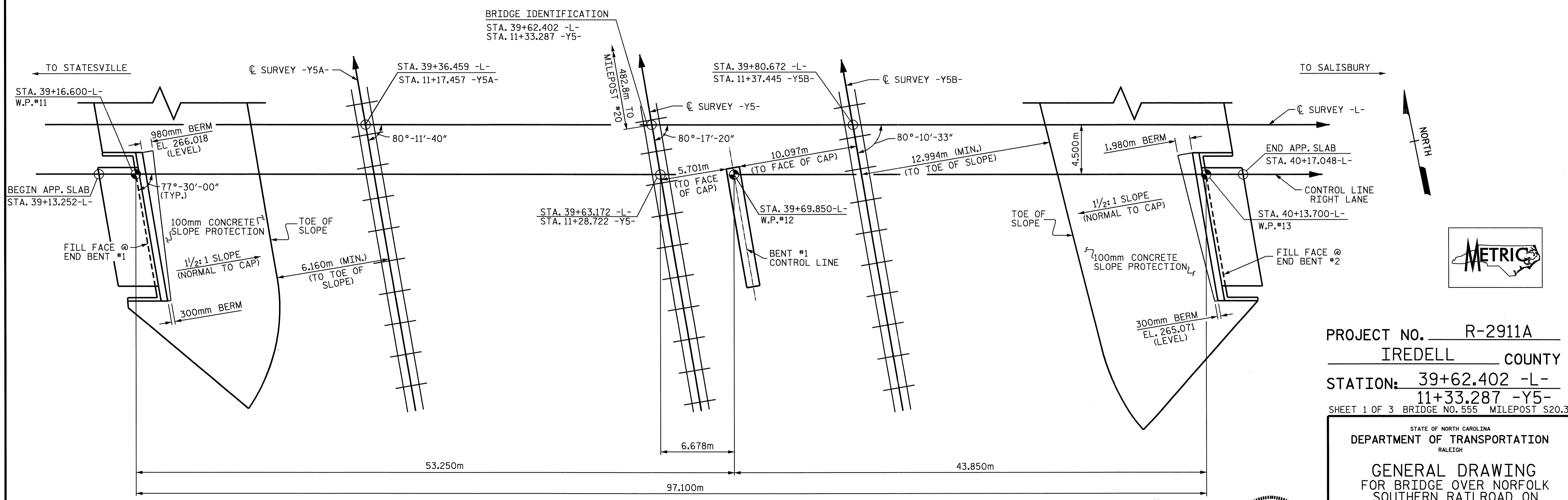
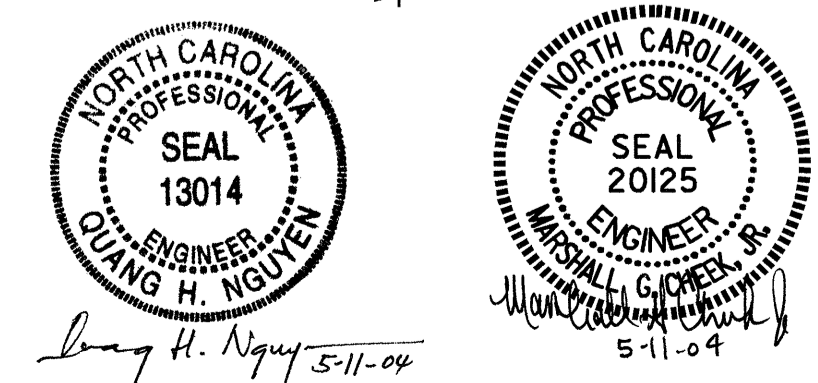


SECTION ALONG CONTROL LINE
 SECTION THRU END BENTS AND BENTS TAKEN AT RIGHT ANGLES.



PLAN
 PILES AND DRILLED PIERS NOT SHOW IN PLAN VIEW

DRAWN BY : E.E.M./L.L.M./DAH DATE : 7-03
 CHECKED BY : M.G.CHEEK DATE : 4/04



PROJECT NO. R-2911A
 IREDELL COUNTY
 STATION: 39+62.402 -L-
 11+33.287 -Y5-
 SHEET 1 OF 3 BRIDGE NO. 555 MILEPOST S20.3

STATE OF NORTH CAROLINA
 DEPARTMENT OF TRANSPORTATION
 RALEIGH

GENERAL DRAWING
 FOR BRIDGE OVER NORFOLK
 SOUTHERN RAILROAD ON
 US 70 BETWEEN SR 2318
 AND ROWAN COUNTY LINE
 (RIGHT LANE)

REVISIONS						SHEET NO.
NO.	BY:	DATE:	NO.	BY:	DATE:	S-30
1			3			TOTAL SHEETS
2			4			106