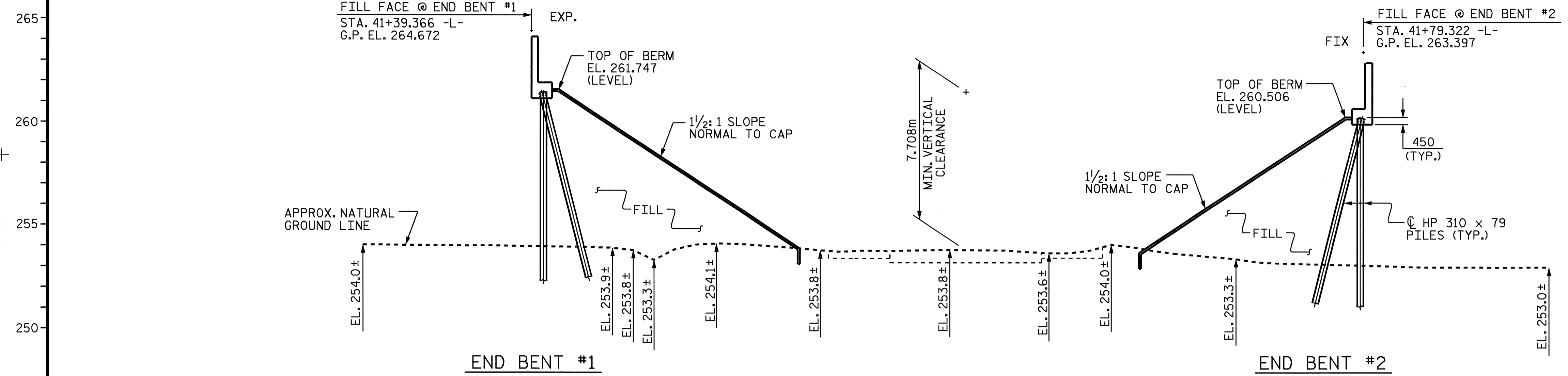
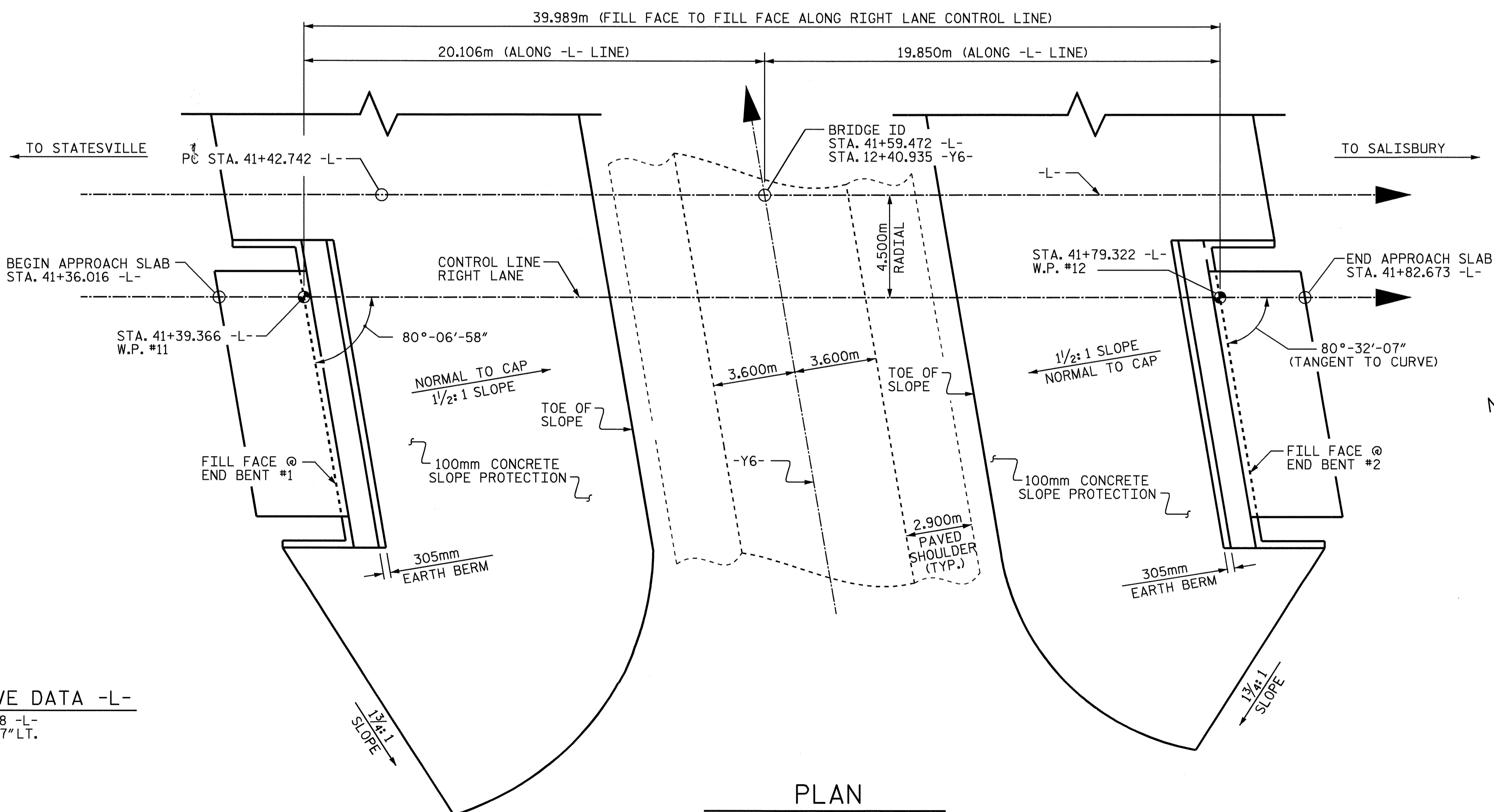


$+3.0585\%$ -4.000%
 PI = 39+22.372 -L-
 EL = 273.822
 VC = 615.000m
GRADE DATA



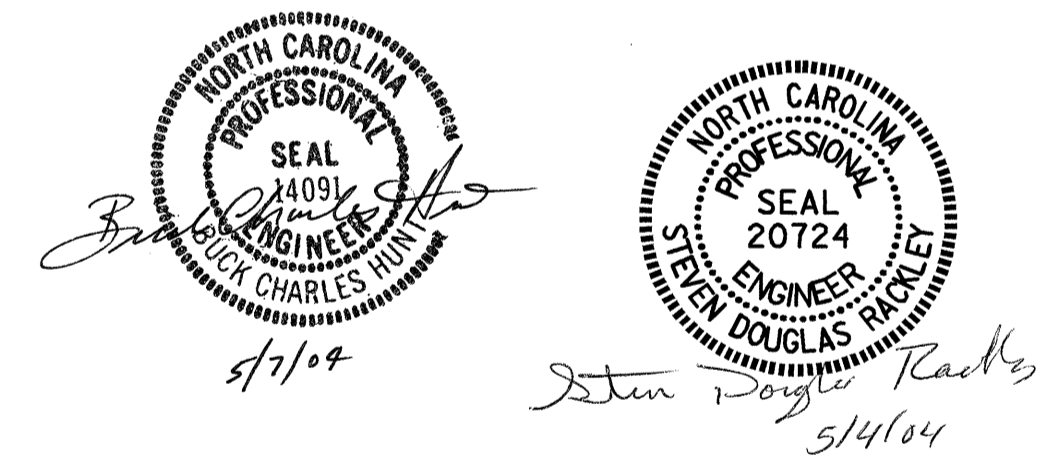
SECTION ALONG RIGHT LANE CONTROL LINE
 SECTION THRU END BENTS ARE TAKEN @ RIGHT ANGLES



PLAN

PILES NOT SHOWN FOR CLARITY

HORIZONTAL CURVE DATA -L-
 PI = 41+97.828 -L-
 $\Delta = 1^\circ-15'-44.7''$ LT.
 T = 55.086m
 L = 110.167m
 R = 5000m



PROJECT NO. R-2911A
IREDELL COUNTY
 STATION: 41+59.472 -L-
12+40.935 -Y6-

SHEET 1 OF 4 BRIDGE # 557

STATE OF NORTH CAROLINA
 DEPARTMENT OF TRANSPORTATION
 RALEIGH
GENERAL DRAWING
 FOR BRIDGE OVER SR 2527
 ON US 70 BETWEEN SR 2318
 AND ROWAN COUNTY LINE
 (RIGHT LANE)

REVISIONS						SHEET NO.
NO.	BY:	DATE:	NO.	BY:	DATE:	S-83
1			3			TOTAL SHEETS
2			4			106

DRAWN BY : J.P. ADAMS DATE : 12/11/03
 CHECKED BY : A. R. CHESSON DATE : 2/12/04