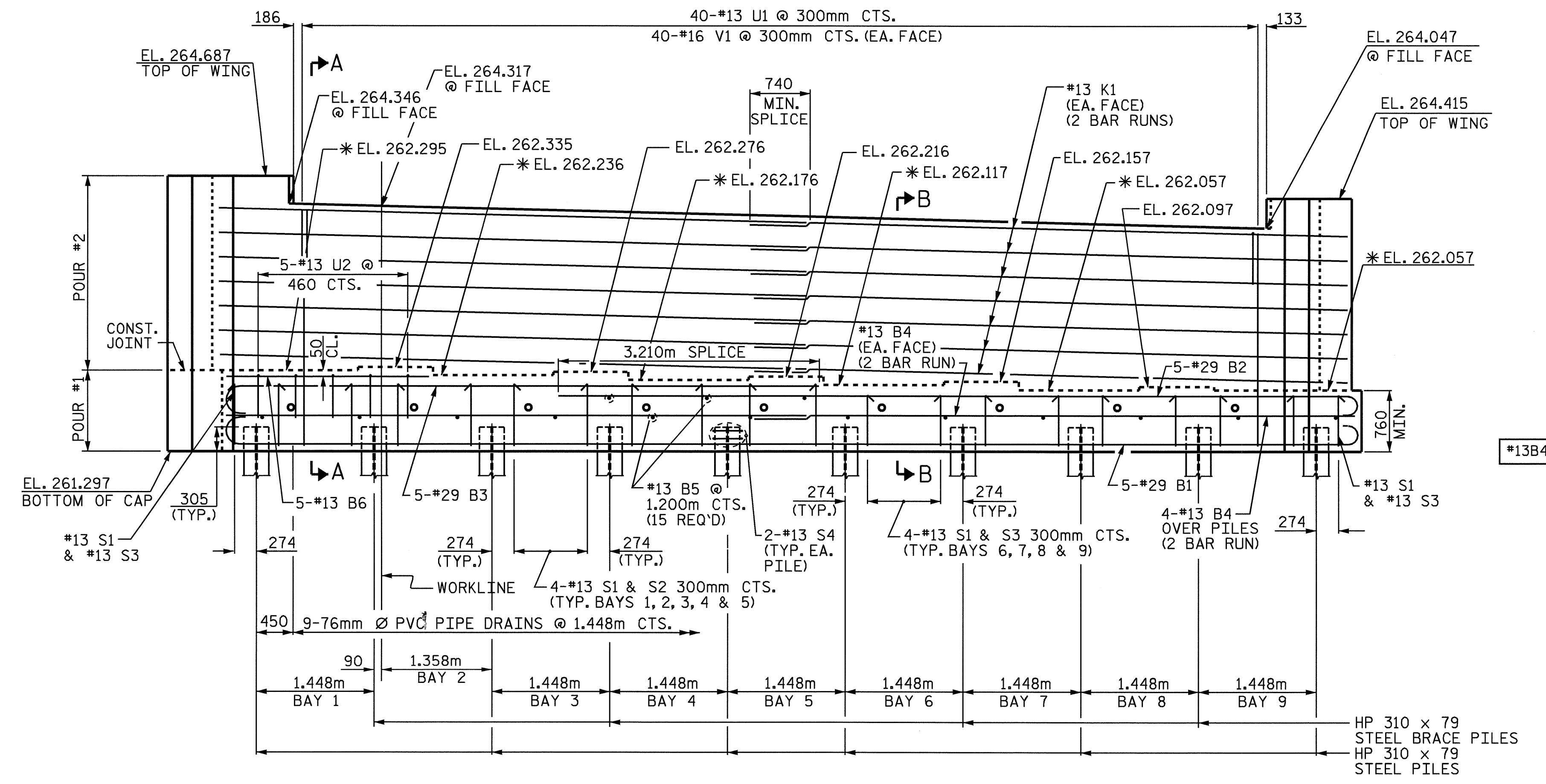


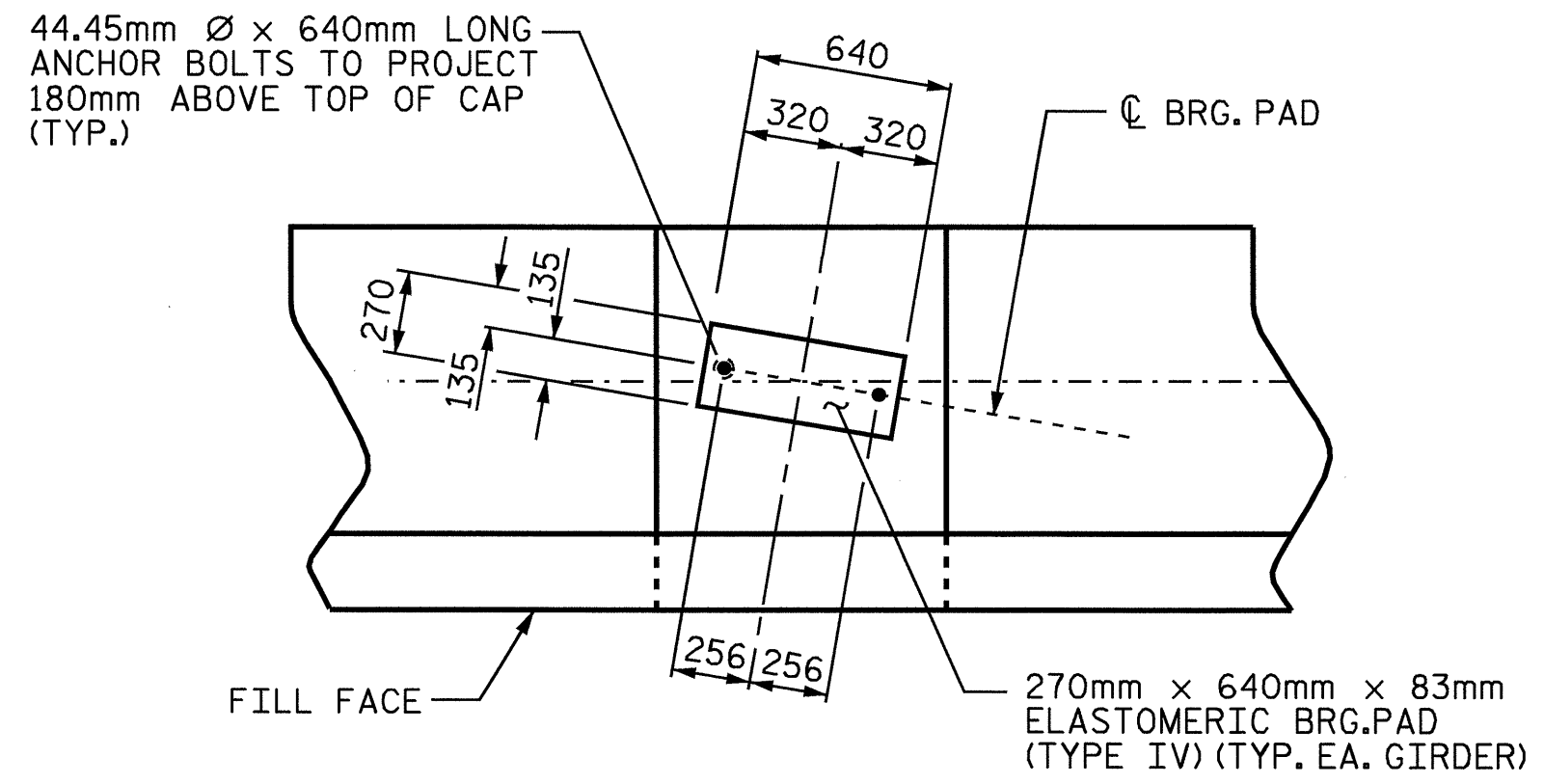
PLAN



ELEVATION

FOR LOCATION OF BRIDGE SEAT ELEVATIONS BETWEEN BRIDGE SEAT BUILDUPS. SEE SECTION A-A, SHEET 3 OF 3

- NOTES**
- STIRRUPS IN CAP MAY BE SHIFTED AS NECESSARY TO CLEAR ANCHOR BOLTS.
 - FOR EPOXY PROTECTIVE COATING, SEE SPECIAL PROVISIONS.
 - PIPE DRAINS MAY BE SHIFTED SLIGHTLY AS NECESSARY TO CLEAR REINFORCING STEEL AND ANCHOR BOLTS.
 - BACKWALL SHALL BE PLACED BEFORE APPLYING THE EPOXY PROTECTIVE COATING.
 - THE TOP SURFACE OF THE CAP EXCEPT THE BRIDGE SEAT BUILDUPS SHALL BE SLOPED TRANSVERSELY FROM THE FILL FACE TO THE BACK FACE AT THE RATE OF 2 %.
 - THE CONTRACTOR SHALL PROVIDE FOR INSTALLATION OF THE 102mm DIAMETER DRAIN PIPE THROUGH THE WING WALL AS REQUIRED FOR REINFORCED BRIDGE APPROACH FILLS, SEE THE ROADWAY PLANS. REINFORCING STEEL IN THE WING WALL MAY BE SHIFTED AS NECESSARY TO CLEAR THE DRAIN PIPE.



DETAIL "A"

(TYP. EA GIRDER)

PROJECT NO. R-2911A
IREDELL COUNTY
 STATION: 41+59.472 -L-

SHEET 1 OF 3

STATE OF NORTH CAROLINA
 DEPARTMENT OF TRANSPORTATION
 RALEIGH

**SUBSTRUCTURE
 END BENT #1**

(RIGHT LANE)



REVISIONS						SHEET NO. S-97
NO.	BY:	DATE:	NO.	BY:	DATE:	
1			3			TOTAL SHEETS 106
2			4			

DRAWN BY: DAN PLATICA DATE: 01/16/04
 CHECKED BY: M. K. BEARD DATE: 02/06/04

04-MAY-2004 08:34
 w:\squads\R2911a\Final Plans\Str 4\R-2911A_sd_EBL-04.dgn
 klayne