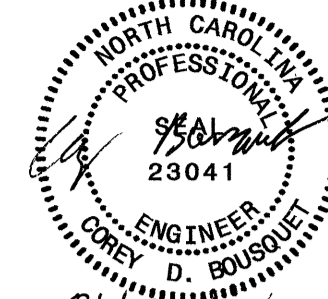
 5 0 10 SCALE	PROJECT REFERENCE NO.	SHEET NO.
	R-2911A	UC-2
DESIGNED BY: JH DRAWN BY: JH CHECKED BY: CDB APPROVED BY: CDB REVISED:		
		
NORTH CAROLINA DEPARTMENT OF TRANSPORTATION DESIGN SERVICES UNIT PHONE: (919)250-4128 FAX: (919)250-4119		

DATUM DESCRIPTION

THE LOCALIZED COORDINATE SYSTEM DEVELOPED FOR THIS PROJECT IS BASED ON THE STATE PLANE COORDINATES ESTABLISHED BY NCOS FOR MONUMENT "384-JAS"

WITH NAD 83 STATE PLANE GRID COORDINATES OF NORTHING: 220871.892(m) EASTING: 459380.926(m)

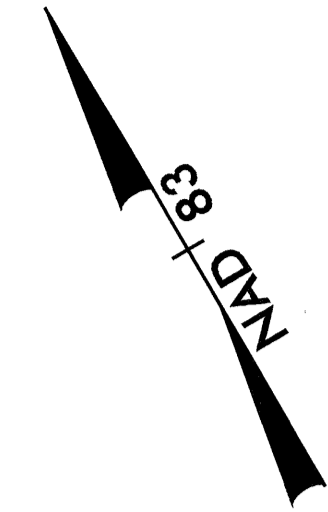
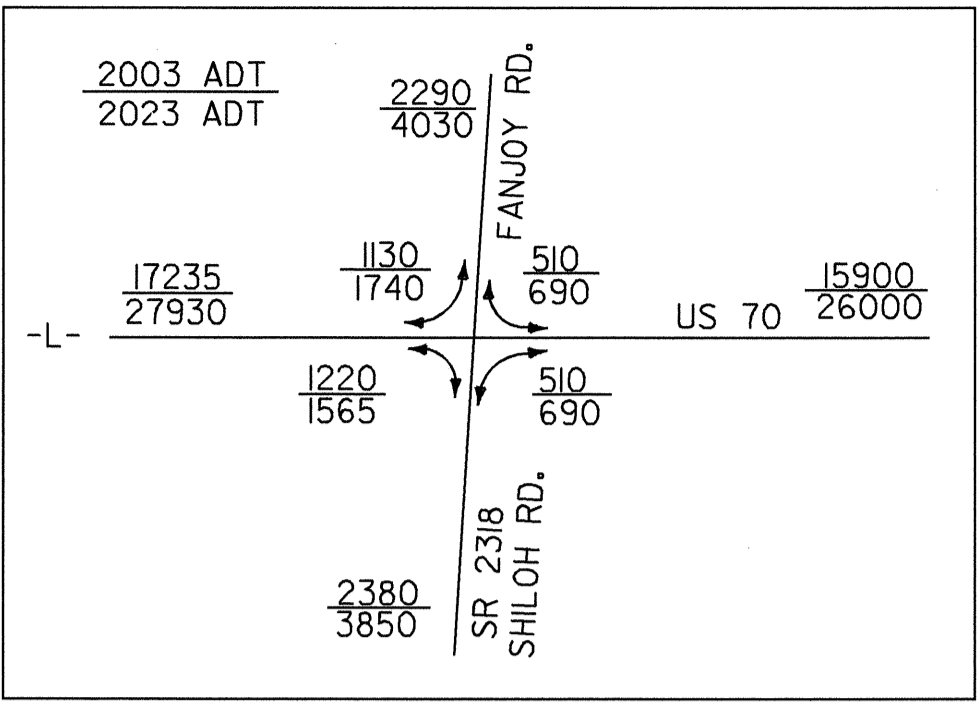
THE AVERAGE COMBINED GRID FACTOR USED ON THIS PROJECT (GROUND TO GRID) IS: 0.999873400

THE N.C. LAMBERT GRID BEARING LOCALIZED HORIZONTAL GROUND DISTANCE FROM "384-JAS" TO -L- POC STATION 9+97.956 IS N 76°30'57.874" W 15,290.236m

ALL LINEAR DIMENSIONS ARE LOCALIZED HORIZONTAL DISTANCES VERTICAL DATUM USED IS NGVD 29

ALL WATER AND SEWER LINES ARE OWEND BY CITY OF STATESVILLE

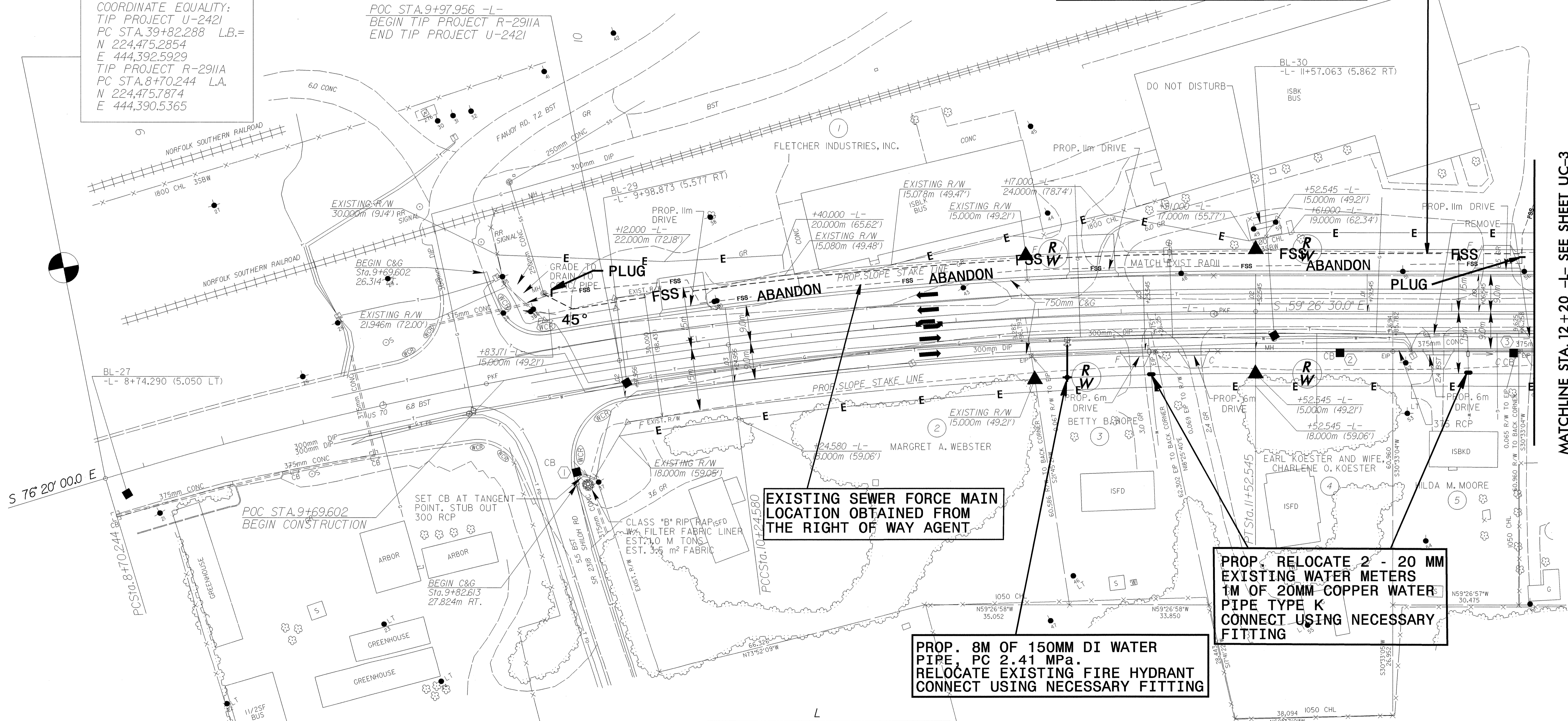
100MM PVC FORCE MAIN SEWER PIPE BELONG TO FLETCHER INDUSTRY



ACCORDING TO UTILITY AGENT 100MM SEWER FORCE MAIN WILL BE INSTALL BEFORE CONSTRUCTION START.

COORDINATE EQUALITY:
 TIP PROJECT U-242I
 PC STA.39+82.288 L.B.=
 N 224,475.2854
 E 444,392.5929
 TIP PROJECT R-2911A
 PC STA.8+70.244 L.A.
 N 224,475.7874
 E 444,390.5365

POC STA.9+97.956 -L-
 BEGIN TIP PROJECT R-2911A
 END TIP PROJECT U-242I



EXISTING SEWER FORCE MAIN LOCATION OBTAINED FROM THE RIGHT OF WAY AGENT

PROP. RELOCATE 2 - 20 MM EXISTING WATER METERS 1M OF 20MM COPPER WATER PIPE TYPE K CONNECT USING NECESSARY FITTING

PROP. 8M OF 150MM DI WATER PIPE, PC 2.41 MPa. RELOCATE EXISTING FIRE HYDRANT CONNECT USING NECESSARY FITTING

PI Sta 9+47.592	PI Sta 10+88.650
$\Delta = 9' 33" 35.3" (RT)$	$\Delta = 7' 19" 54.7" (RT)$
L = 154.336	L = 127.965
T = 77.348	T = 64.070
R = 925.000	R = 1,000.000
SUPER = 0.02	SUPER = 0.03

SEE SHEET 33 FOR -L- PROFILE

MATCHLINE STA. 12 + 20 -L- SEE SHEET UC-3