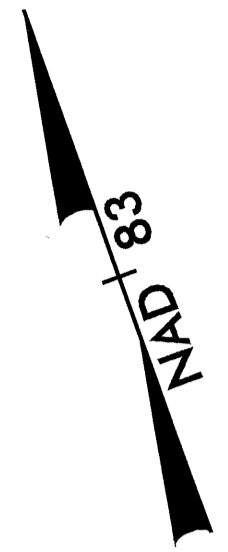


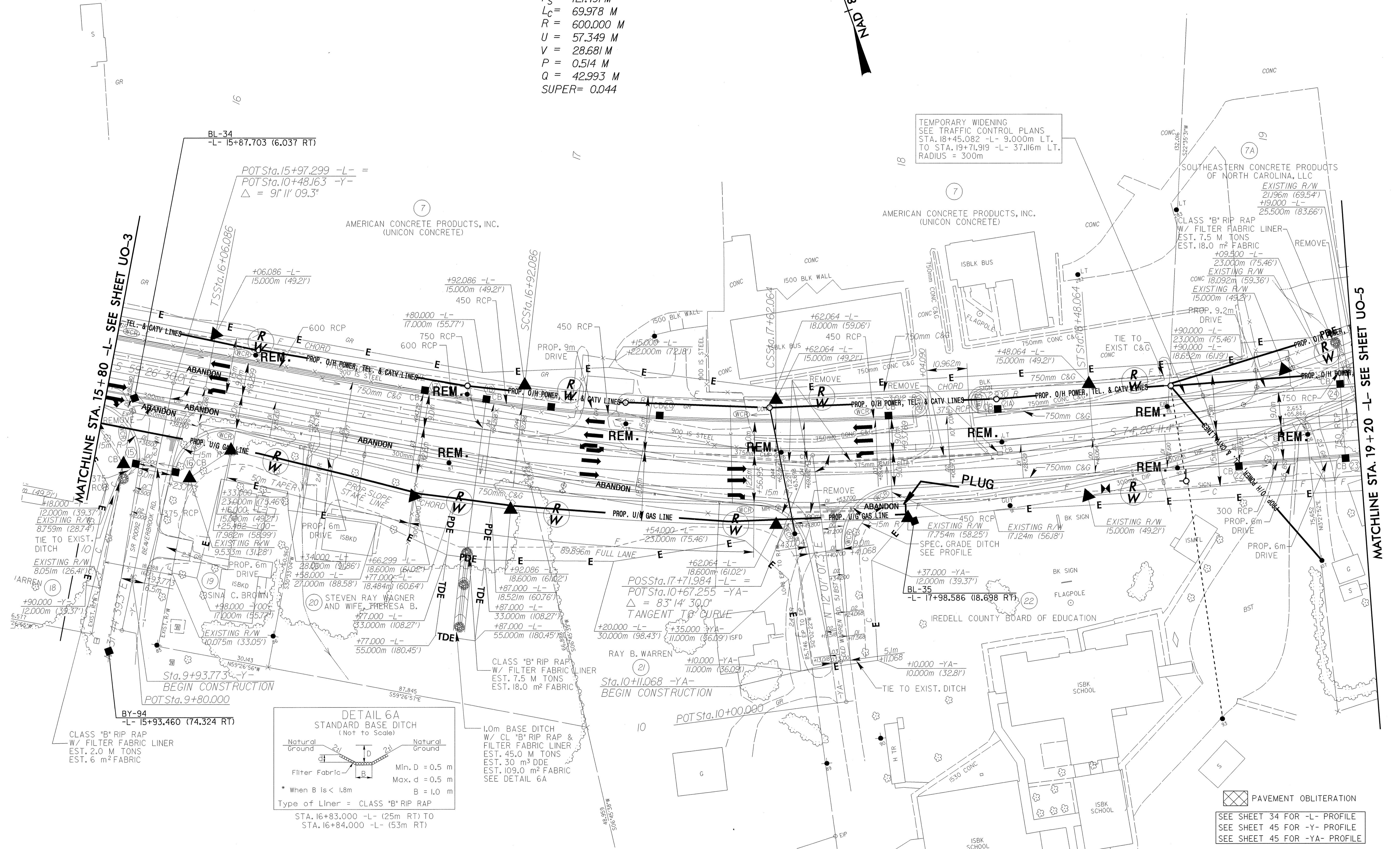
UTILITIES BY OTHERS

NOTE:
ALL PROPOSED UTILITY WORK
SHOWN ON THIS SHEET WILL
BE DONE BY OTHERS

PJ = 17+27.577
 $\Delta = 14^{\circ}53'41.4''$ LT.
 $L_s = 86.000$ M
 $\theta_s = 4^{\circ}06'22.3''$ LT.
 $T_s = 121.491$ M
 $L_c = 69.978$ M
 $R = 600.000$ M
 $U = 57.349$ M
 $V = 28.681$ M
 $P = 0.514$ M
 $Q = 42.993$ M
 SUPER = 0.044

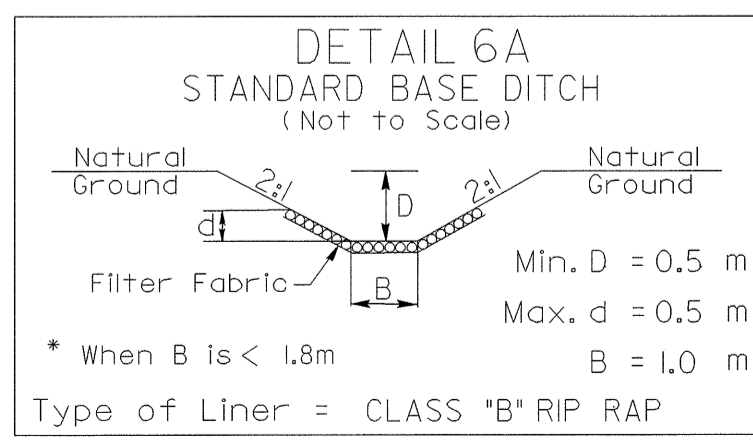


TEMPORARY WIDENING
 SEE TRAFFIC CONTROL PLANS
 STA. 18+45.082 -L- 9.000m LT.
 TO STA. 19+71.919 -L- 37.116m LT.
 RADIUS = 300m



MATCHLINE STA. 15+80 -L- SEE SHEET UO-3

MATCHLINE STA. 19+20 -L- SEE SHEET UO-5



1.0m BASE DITCH
 W/ CL "B" RIP RAP &
 FILTER FABRIC LINER
 EST. 45.0 M TONS
 EST. 30 m³ DDE
 EST. 109.0 m² FABRIC
 SEE DETAIL 6A

PAVEMENT OBLITERATION

SEE SHEET 34 FOR -L- PROFILE
 SEE SHEET 45 FOR -Y- PROFILE
 SEE SHEET 45 FOR -YA- PROFILE

042597
 27-JAN-2004 10:13
 R:\27-JAN-2004\042597\PROJECT\ASB\UO-4.DGN
 jhe@shelton.com