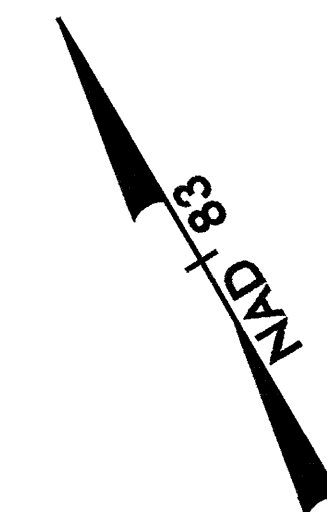
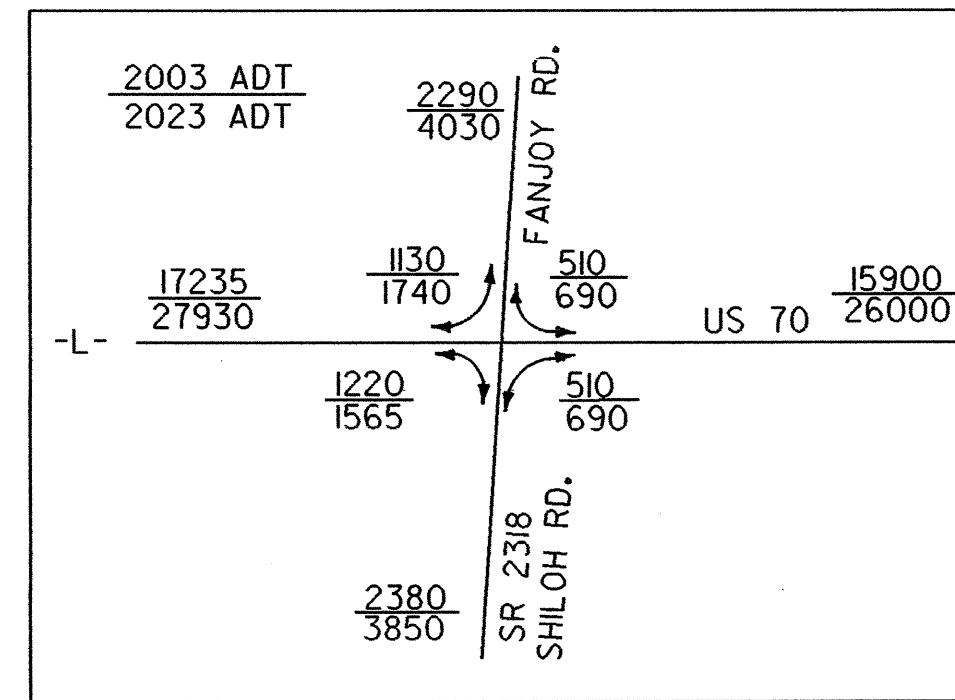


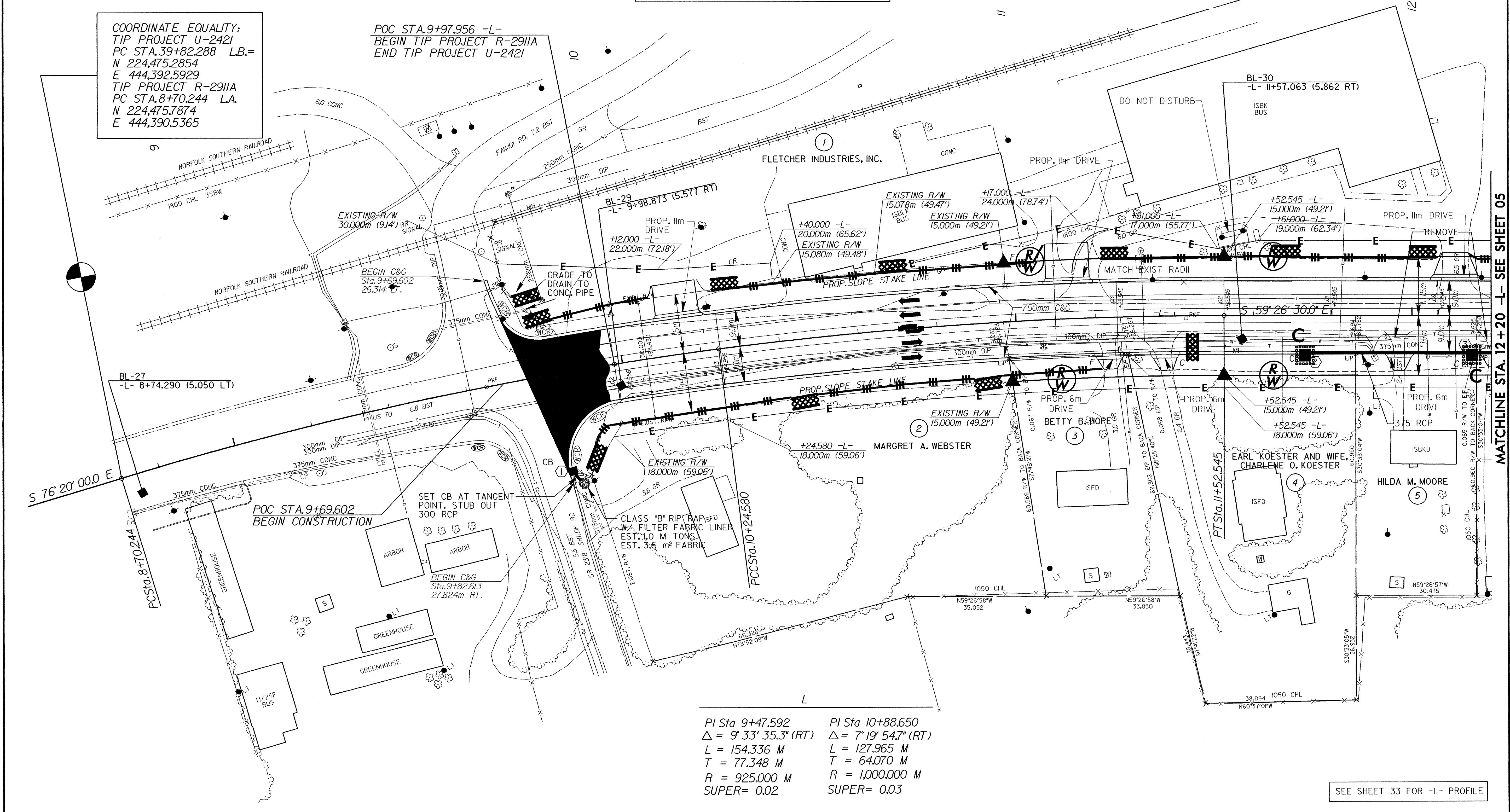
DATUM DESCRIPTION

THE LOCALIZED COORDINATE SYSTEM DEVELOPED FOR THIS PROJECT IS BASED ON THE STATE PLANE COORDINATES ESTABLISHED BY NCGS FOR MONUMENT "384-JAS"
 WITH NAD 83 STATE PLANE GRID COORDINATES OF
 NORTHING: 220871.892(m) EASTING: 459380.926(m)
 THE AVERAGE COMBINED GRID FACTOR USED ON THIS PROJECT (GROUND TO GRID) IS: 0.999873400
 THE N.C. LAMBERT GRID BEARING
 LOCALIZED HORIZONTAL GROUND DISTANCE FROM "384-JAS" TO -L- POC STATION 9+97.956 IS
 N 76°30'57.874" W 15,290.236m
 ALL LINEAR DIMENSIONS ARE LOCALIZED HORIZONTAL DISTANCES
 VERTICAL DATUM USED IS NGVD 29

COORDINATE EQUALITY:
 TIP PROJECT U-2421
 PC STA. 39+82.288 LB.=
 N 224,475.2854
 E 444,392.5929
 TIP PROJECT R-2911A
 PC STA. 8+70.244 LA.
 N 224,475.7874
 E 444,390.5365



PROJECT REFERENCE NO. R-2911A		SHEET NO. EC-32/CONST.4
R/W SHEET NO.		
ROADWAY DESIGN ENGINEER	HYDRAULICS ENGINEER	
CONST. REV.		
R/W REV.		



PI Sta 9+47.592 PI Sta 10+88.650
 $\Delta = 9^{\circ} 33' 35.3'' (RT)$ $\Delta = 7^{\circ} 19' 54.7'' (RT)$
 L = 154.336 M L = 127.965 M
 T = 77.348 M T = 64.070 M
 R = 925.000 M R = 1,000.000 M
 SUPER = 0.02 SUPER = 0.03

SEE SHEET 33 FOR -L- PROFILE