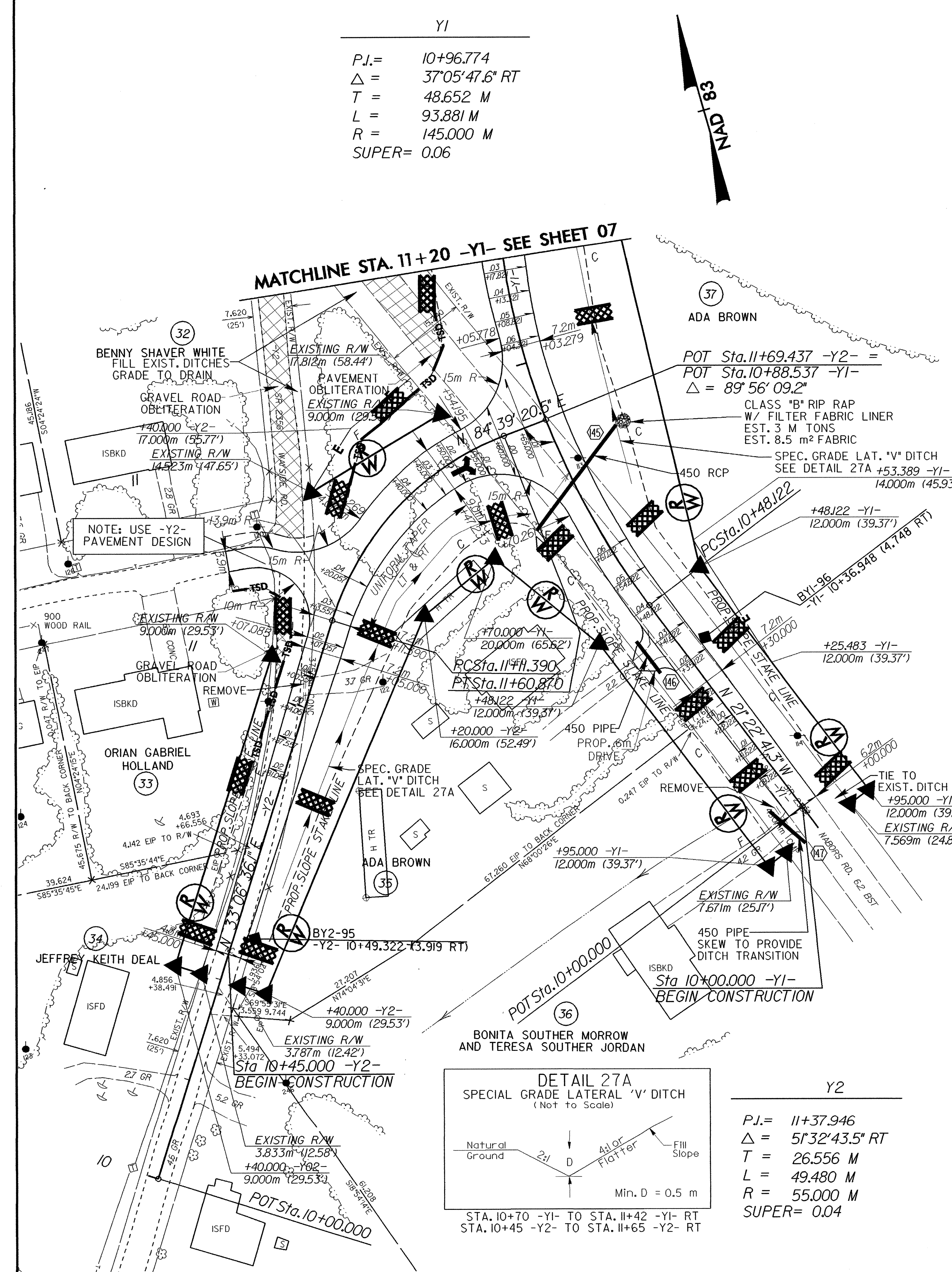
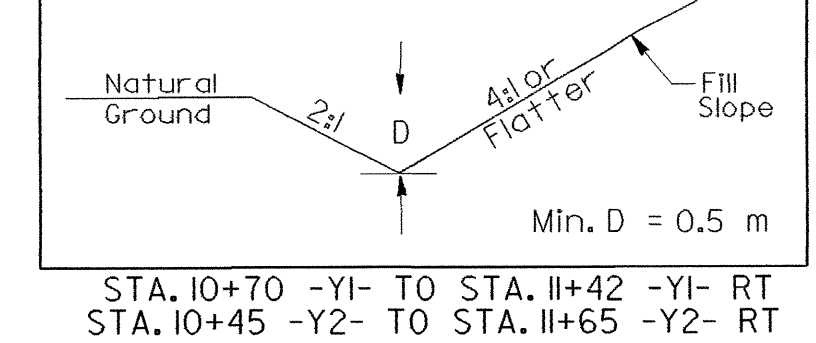
 5 0 10	PROJECT REFERENCE NO.	SHEET NO.
	R-2911A	EC-55/CONST.27
CONST.REV. R/W REV.	R/W SHEET NO.	
	ROADWAY DESIGN ENGINEER	HYDRAULICS ENGINEER

Y1

P.I. = 10+96.774
 $\Delta = 37^{\circ}05'47.6" RT$
 T = 48.652 M
 L = 93.881 M
 R = 145.000 M
 SUPER = 0.06



DETAIL 27A
 SPECIAL GRADE LATERAL 'V' DITCH
 (Not to Scale)



Y2

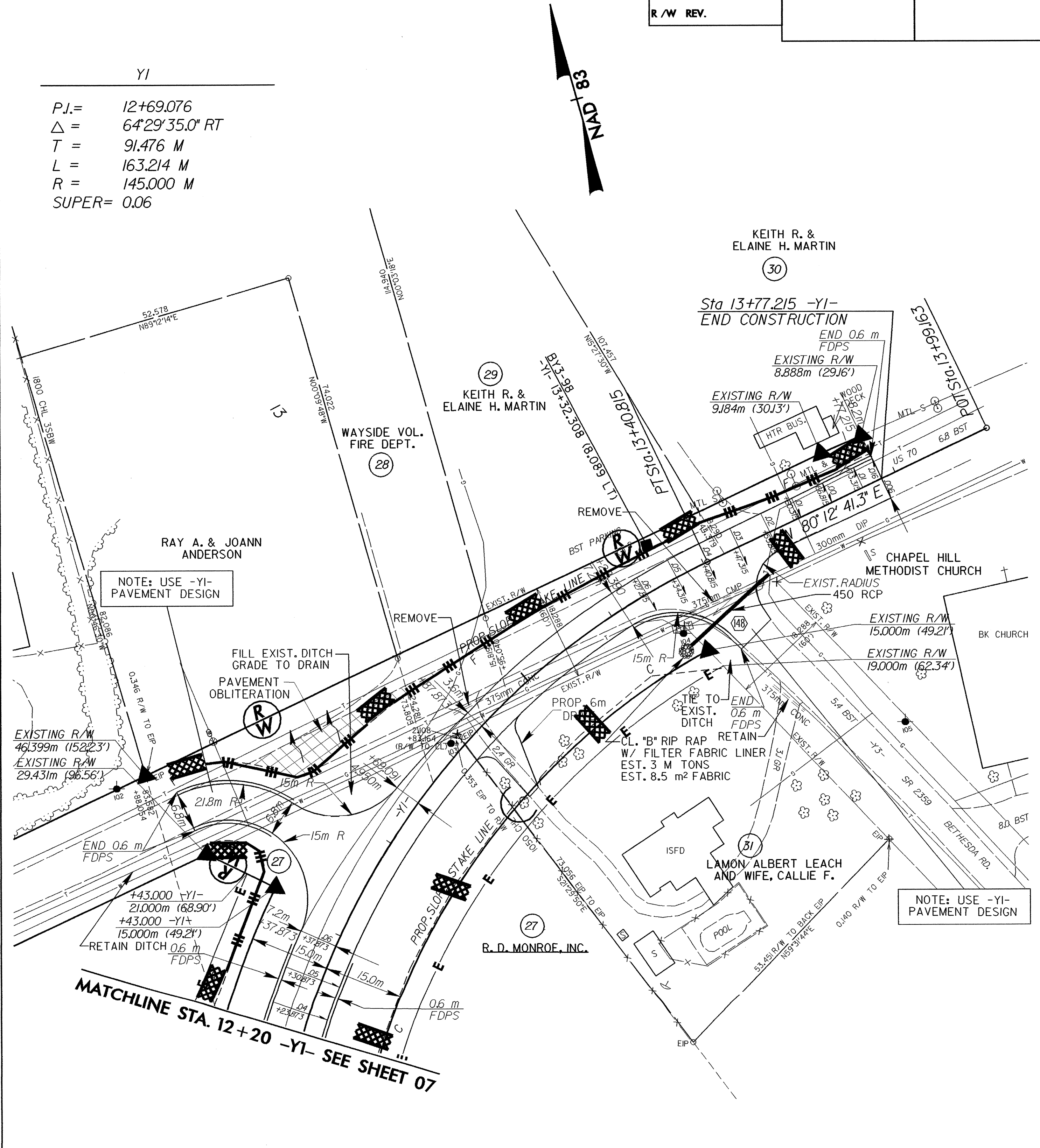
P.I. = 11+37.946
 $\Delta = 51^{\circ}32'43.5" RT$
 T = 26.556 M
 L = 49.480 M
 R = 55.000 M
 SUPER = 0.04

NOTE:
 ALL PROP. DRIVEWAY RADII
 3.0m UNLESS SHOWN OTHERWISE.

PAVEMENT OBLITERATION
 SEE SHEET 46 FOR -Y1- PROFILE
 SEE SHEET 46 FOR -Y2- PROFILE

Y1

P.I. = 12+69.076
 $\Delta = 64^{\circ}29'35.0" RT$
 T = 91.476 M
 L = 163.214 M
 R = 145.000 M
 SUPER = 0.06



NOTE:
 ALL PROP. DRIVEWAY RADII
 3.0m UNLESS SHOWN OTHERWISE.

PAVEMENT OBLITERATION
 SEE SHEET 46 FOR -Y1- PROFILE