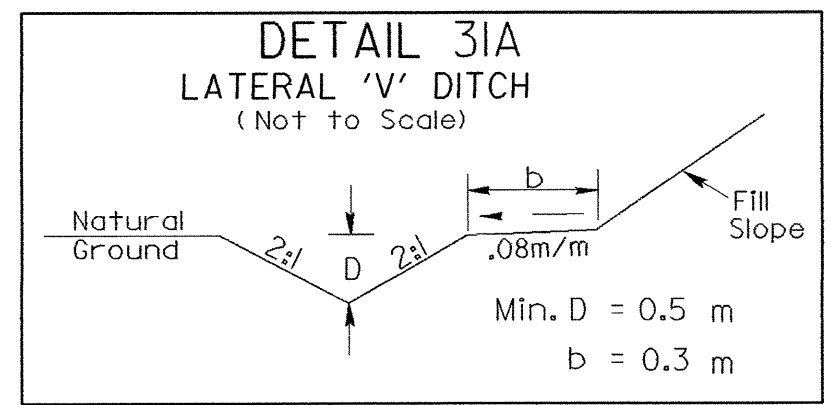
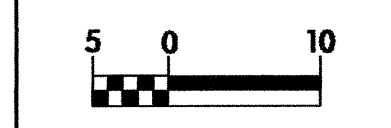
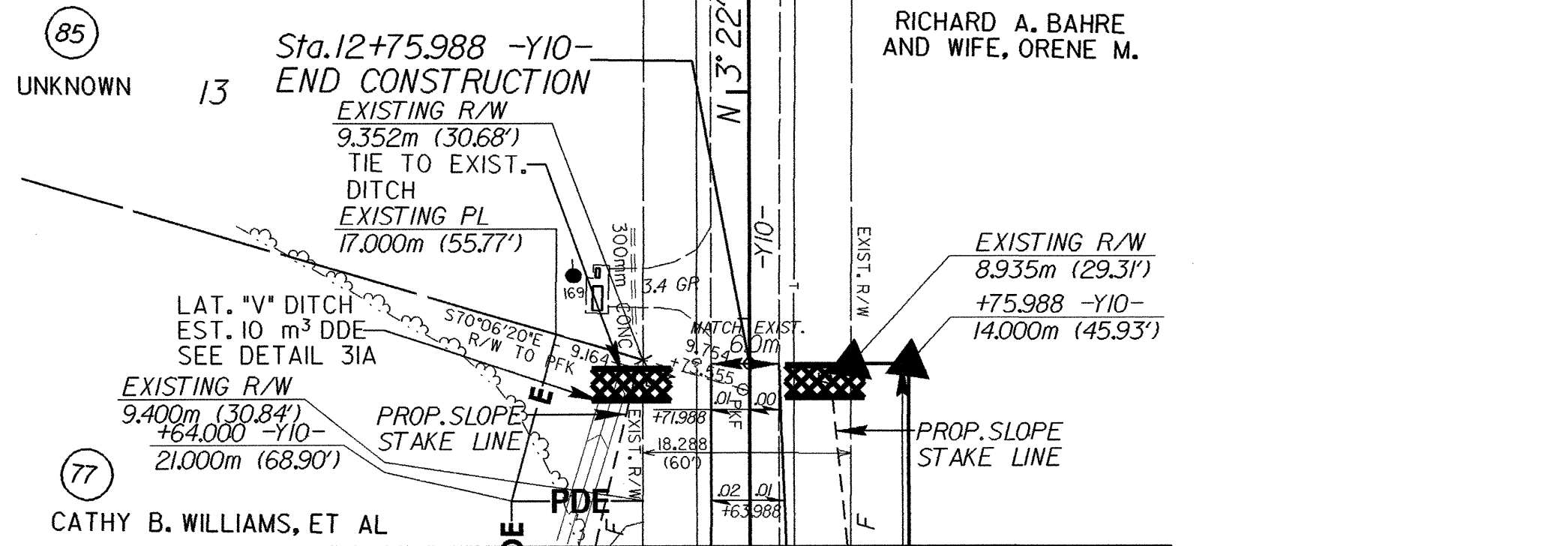


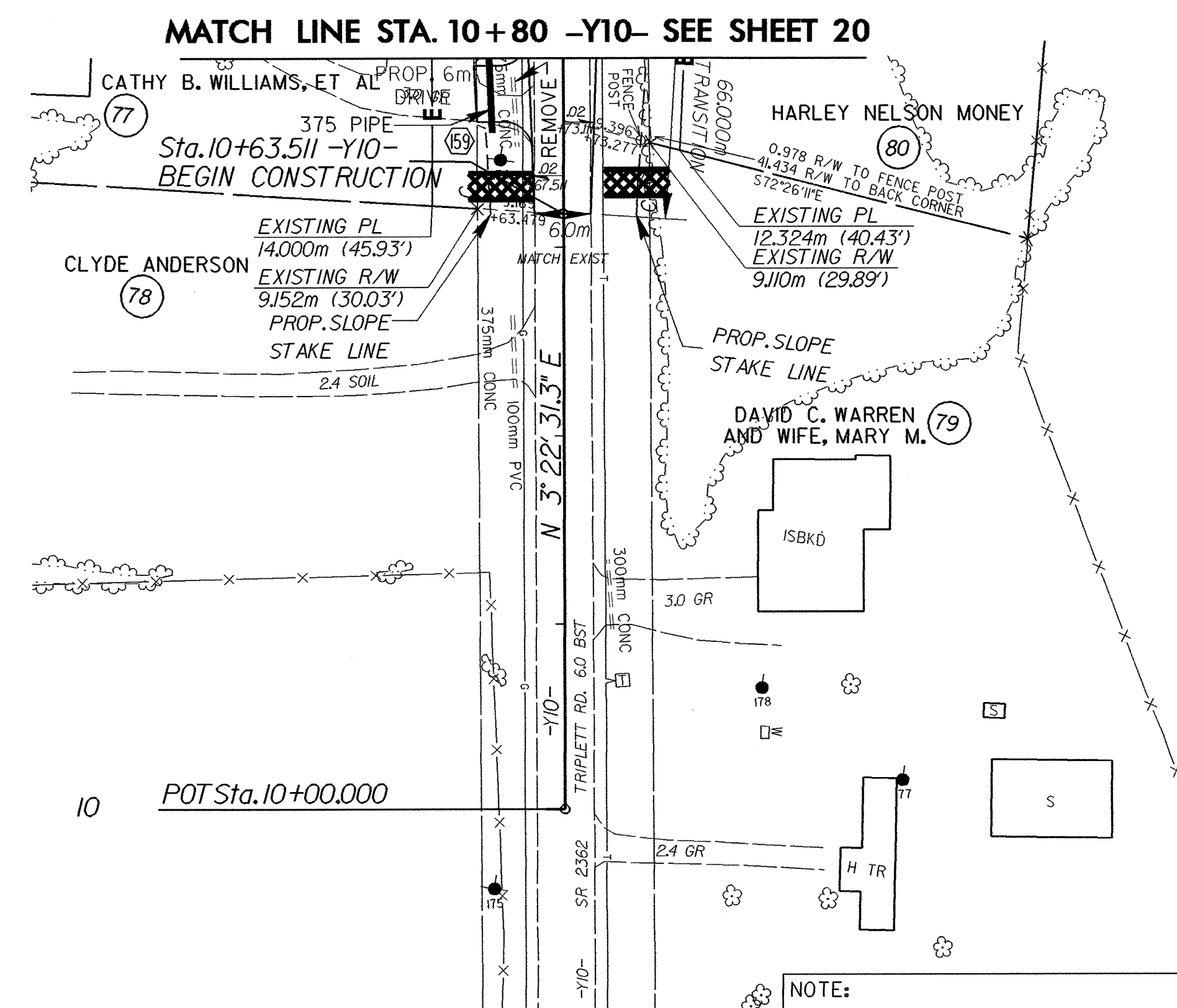
PROJECT REFERENCE NO.		SHEET NO.	
R-2911A		EC-58/CONST.31	
R/W SHEET NO.			
ROADWAY DESIGN ENGINEER		HYDRAULICS ENGINEER	
CONST. REV.		R/W REV.	



STA. 12+59 -Y10- TO STA. 12+75 -Y10- LT

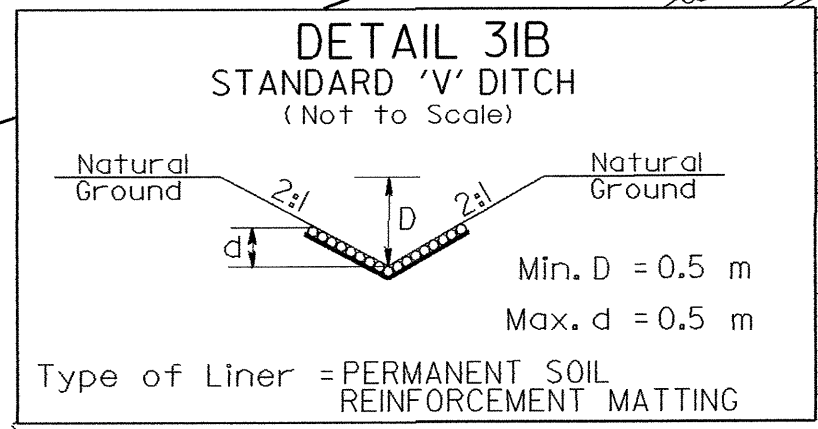
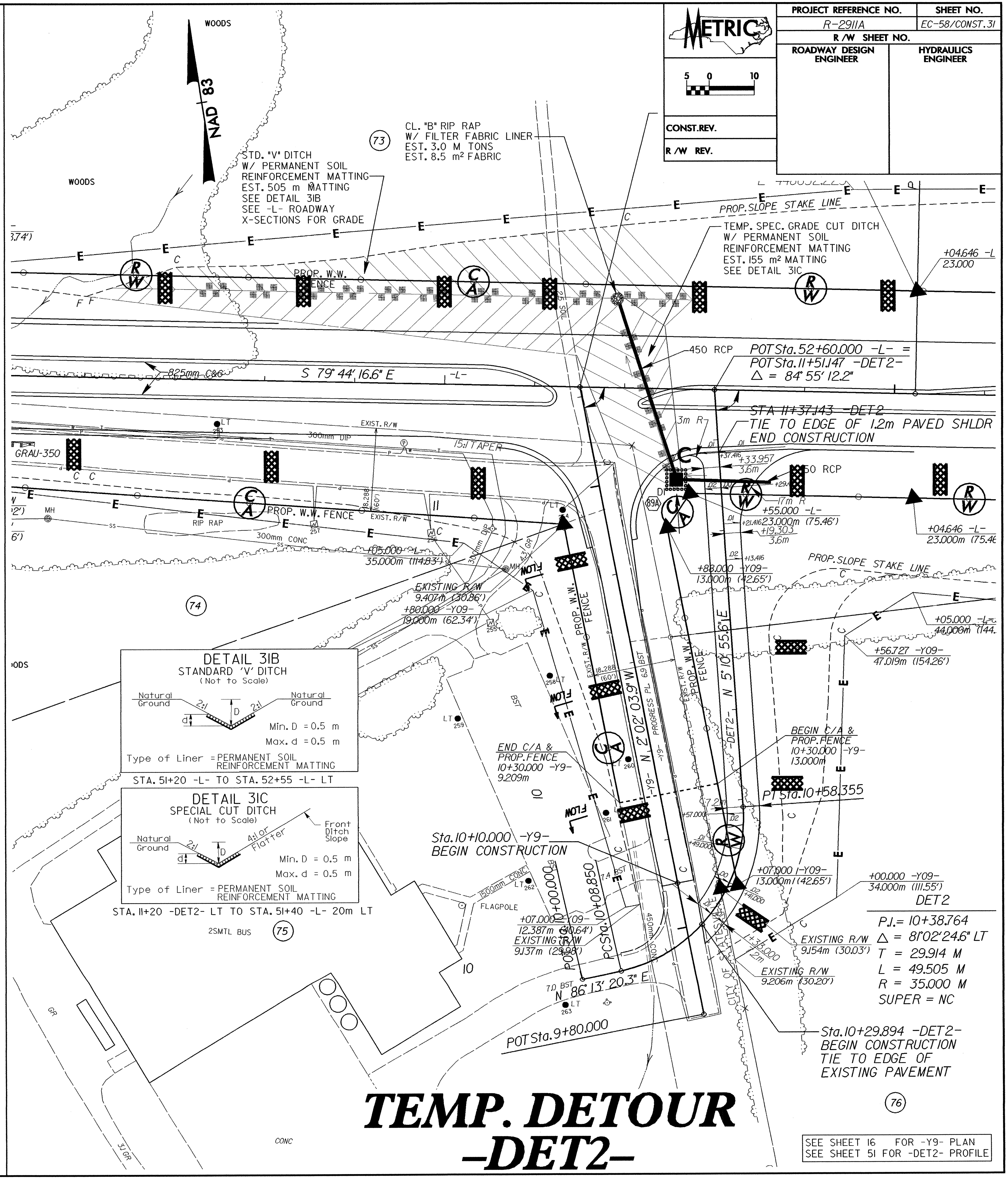


MATCH LINE STA. 12+60 -Y10- SEE SHEET 20

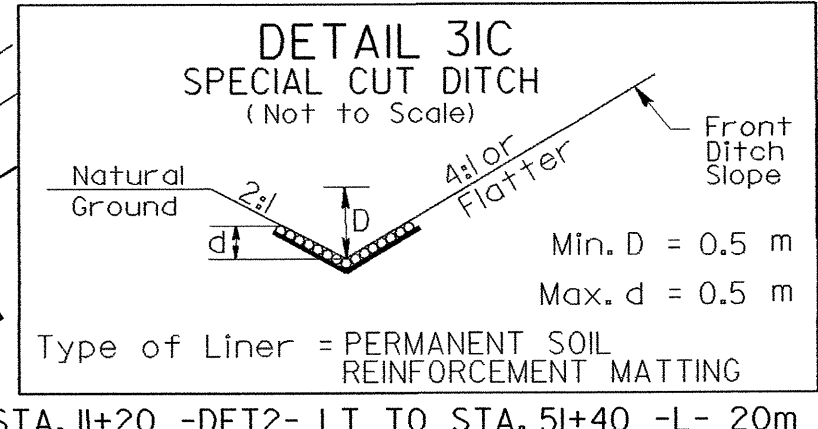


MATCH LINE STA. 10+80 -Y10- SEE SHEET 20

NOTE:
ALL PROP. DRIVEWAY RADII
3.0m UNLESS SHOWN OTHERWISE.
SEE SHEET 51 FOR -Y10- PROFILE



STA. 51+20 -L- TO STA. 52+55 -L- LT



STA. 11+20 -DET2- LT TO STA. 51+40 -L- 20m LT

**TEMP. DETOUR
-DET2-**

P.J. = 10+38.764
 $\Delta = 8^{\circ}02'24.6''$ LT
T = 29.914 M
L = 49.505 M
R = 35.000 M
SUPER = NC

Sta. 10+29.894 -DET2-
BEGIN CONSTRUCTION
TIE TO EDGE OF
EXISTING PAVEMENT

SEE SHEET 16 FOR -Y9- PLAN
SEE SHEET 51 FOR -DET2- PROFILE