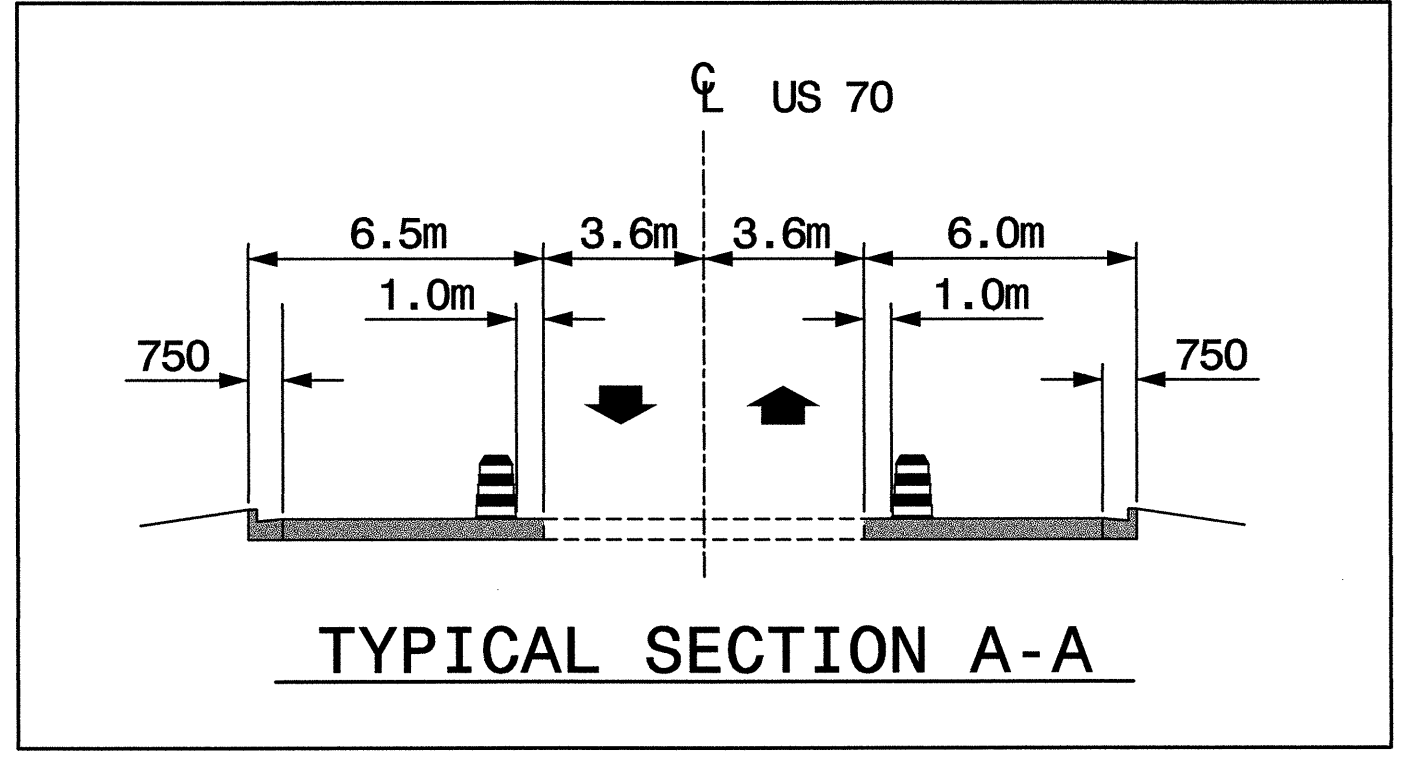
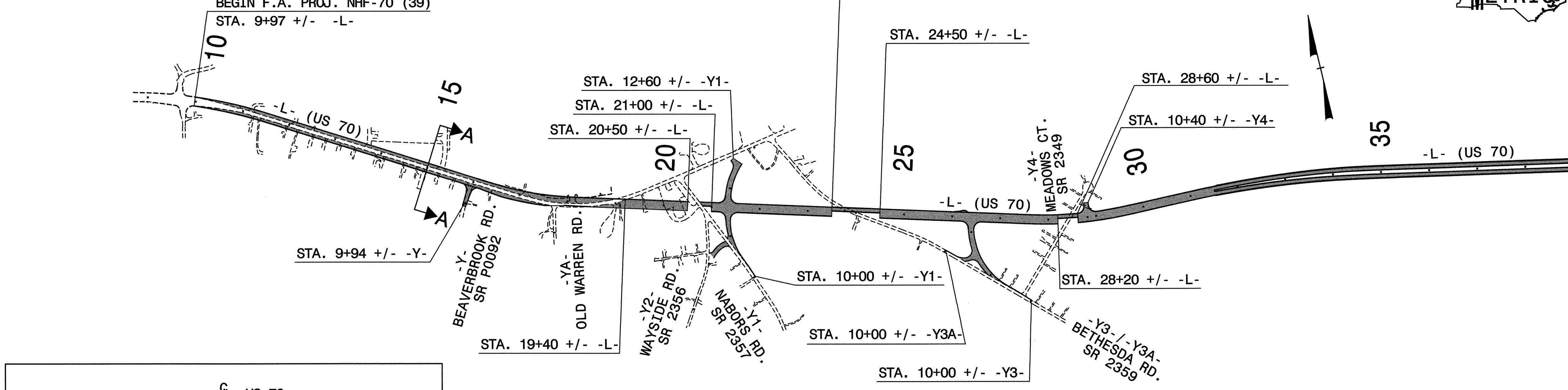




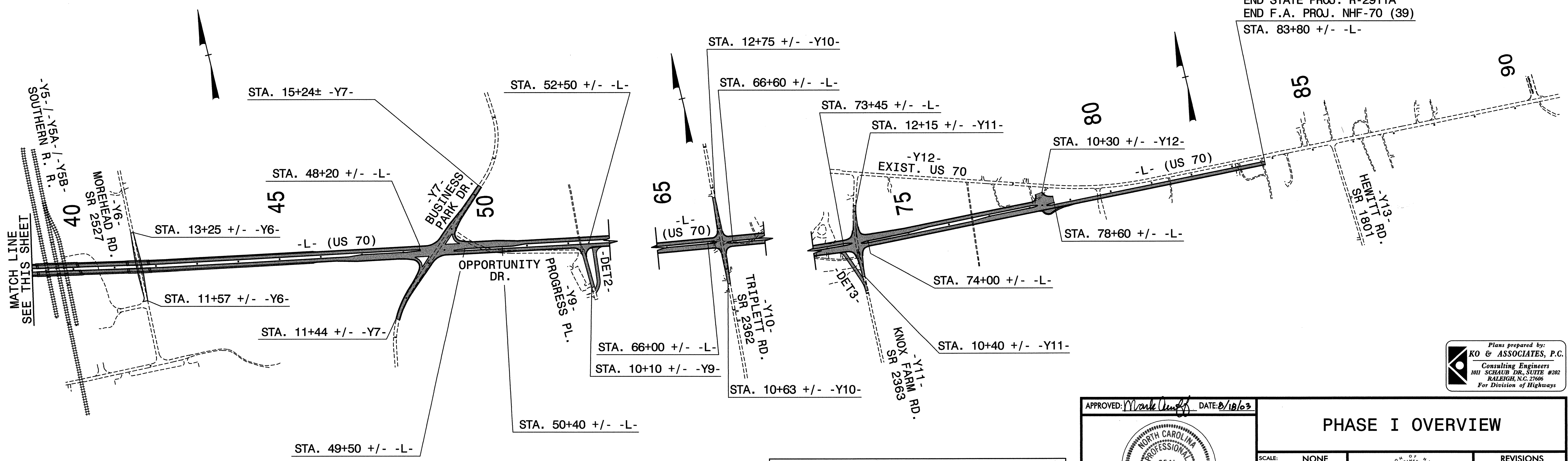
PROJ. REFERENCE NO.	SHEET NO.
R-2911A	TCP-5

BEGIN STATE PROJ. R-2911A  
 BEGIN F.A. PROJ. NHF-70 (39)  
 STA. 9+97 +/- -L-

STA. 23+50 +/- -L-



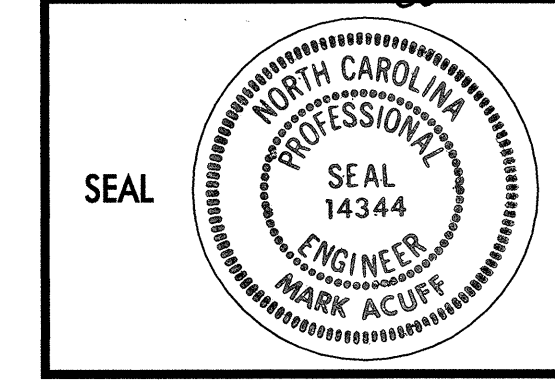
END STATE PROJ. R-2911A  
 END F.A. PROJ. NHF-70 (39)  
 STA. 83+80 +/- -L-



**LEGEND**

PROPOSED CONSTRUCTION

APPROVED: *Mark Acuff* DATE: 8/18/03



<b>PHASE I OVERVIEW</b>	
SCALE: NONE	REVISIONS
DATE: 8-20-03	
DWG. BY: B.L.M.	
DESIGN BY: M.S.A.	
REVIEWED BY: W.F.L.	

Plans prepared by:  
**KO & ASSOCIATES, P.C.**  
 Consulting Engineers  
 1011 SCHAUB DR., SUITE #202  
 RALEIGH, N.C. 27606  
 For Division of Highways

p:\TRAFFIC\Sub Jobs\2911a\F002\PH01.dgn  
 08/15/2003 02:36:42 PM