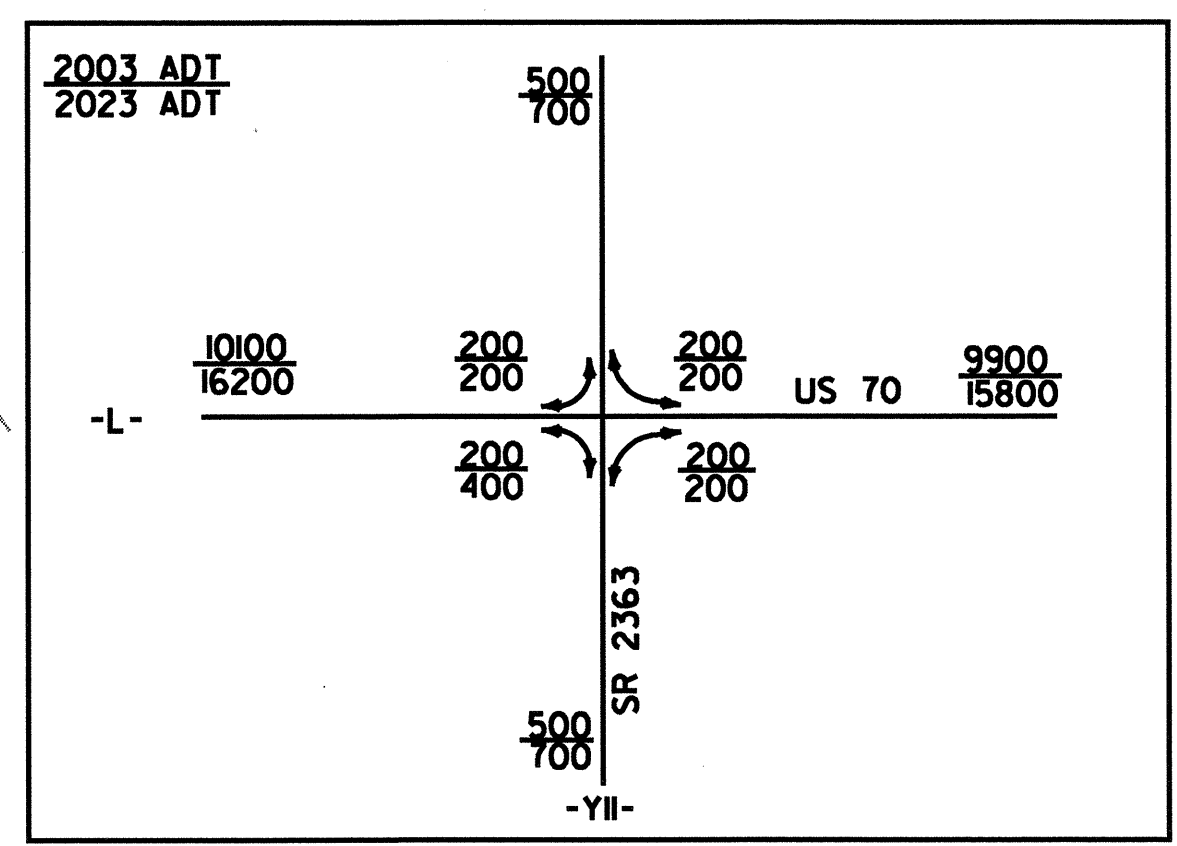
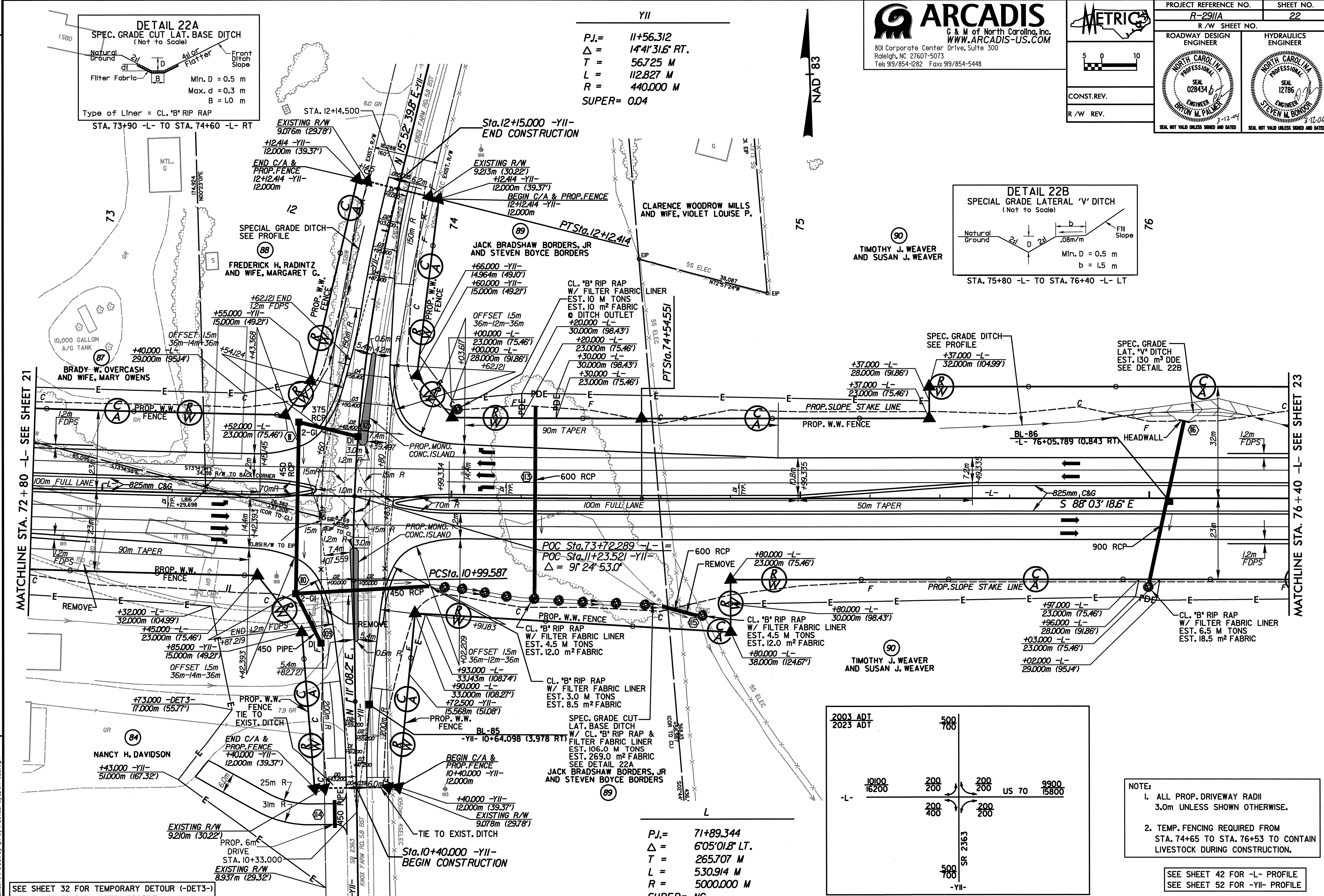
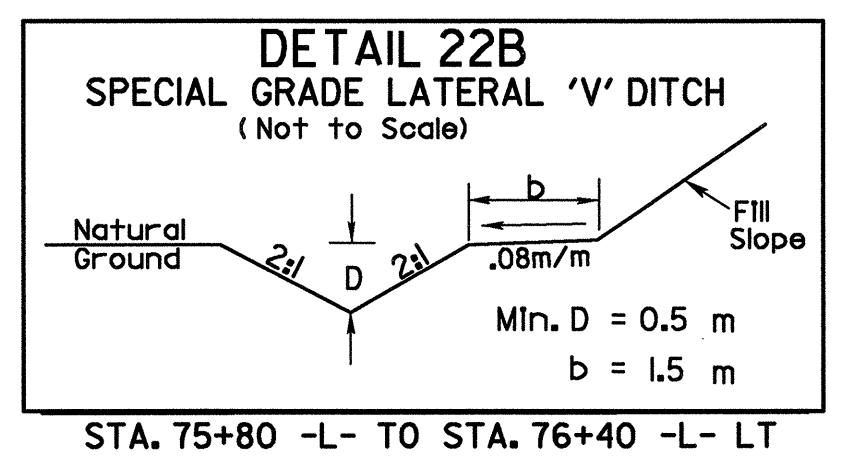
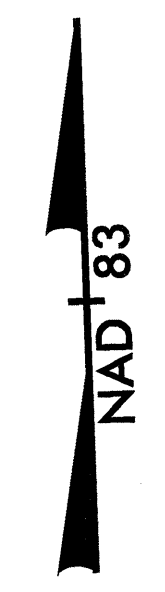


Y11

PJ. = 11+56.312
 Δ = 14°41'31.8" RT.
 T = 56.725 M
 L = 112.827 M
 R = 440.000 M
 SUPER = 0.04



NOTE:

- ALL PROP. DRIVEWAY RADII 3.0m UNLESS SHOWN OTHERWISE.
- TEMP. FENCING REQUIRED FROM STA. 74+65 TO STA. 76+53 TO CONTAIN LIVESTOCK DURING CONSTRUCTION.

SEE SHEET 42 FOR -L- PROFILE
 SEE SHEET 52 FOR -Y11- PROFILE

SEE SHEET 32 FOR TEMPORARY DETOUR (-DET3-)
 SEE SHEET 52 FOR -DET3- PROFILE

PJ. = 71+89.344
 Δ = 6°05'01.8" LT.
 T = 265.707 M
 L = 530.914 M
 R = 5000.000 M
 SUPER = NC

ARCADIS G&M
 Date: 3/12/2004 Time: 8:05:30 AM
 File: merryl roadway\p09\N2911A_rdy_p09.e22.dgn