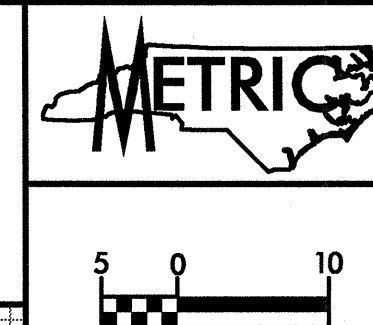


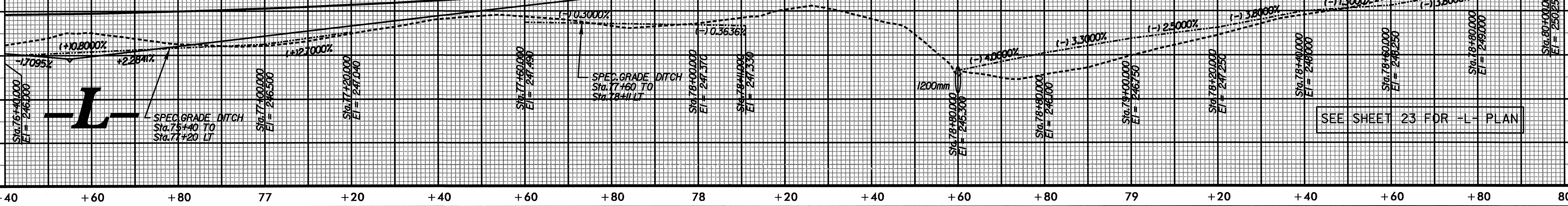
264
263
262
261
260
259
258
257
256
255
254
253
252
251
250
249
248
247
246
245
244
243
242
241
240



PROJECT REFERENCE NO. R-2911A	SHEET NO. 43
ROADWAY DESIGN ENGINEER	HYDRAULICS ENGINEER
SEAL NOT VALID UNLESS SIGNED AND DATED	

PIPE HYDRAULIC DATA	
DRAINAGE STRUCTURE NO.125	
DRAINAGE AREA	= 8.30 HA
DESIGN FREQUENCY	= 50 YRS
DESIGN DISCHARGE	= 2.33 CMS
DESIGN HW ELEVATION	= 248.54M
100 YEAR DISCHARGE	= 2.71 CMS
100 YEAR HW ELEVATION	= 246.70M
OVERTOPPING FREQUENCY	= 500+ YRS
OVERTOPPING DISCHARGE	= 5.85 CMS
OVERTOPPING ELEVATION	= 248.54M

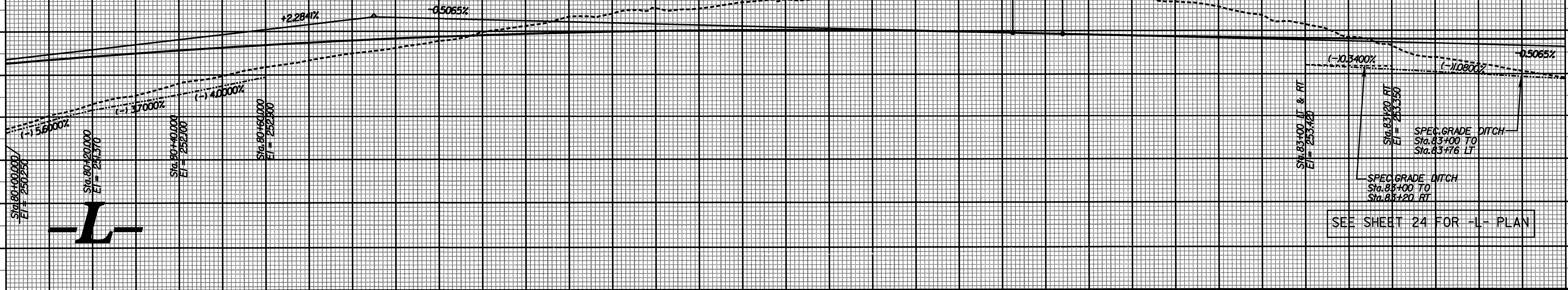
PI = 76+55.000
EL = 245.840
VC = 410 m
K = 103
110 km/h



+40 +60 +80 77 +20 +40 +60 +80 78 +20 +40 +60 +80 79 +20 +40 +60 +80 80

267
266
265
264
263
262
261
260
259
258
257
256
255
254
253
252
251
250
249
248
247
246
245
244
243

PI = 80+85.000
EL = 255.662
VC = 295 m
K = 106
120 km/h



80 +20 +40 +60 +80 81 +20 +40 +60 +80 82 +20 +40 +60 +80 83 +20 +40 +60

ARCADIS G&M
 Date: 3/12/2004 Time: 8:09:43 AM
 Filename: r:\roadway\proj\2911a_rdy_pfl-s43.dgn

SEE SHEET 23 FOR -L- PLAN

SEE SHEET 24 FOR -L- PLAN