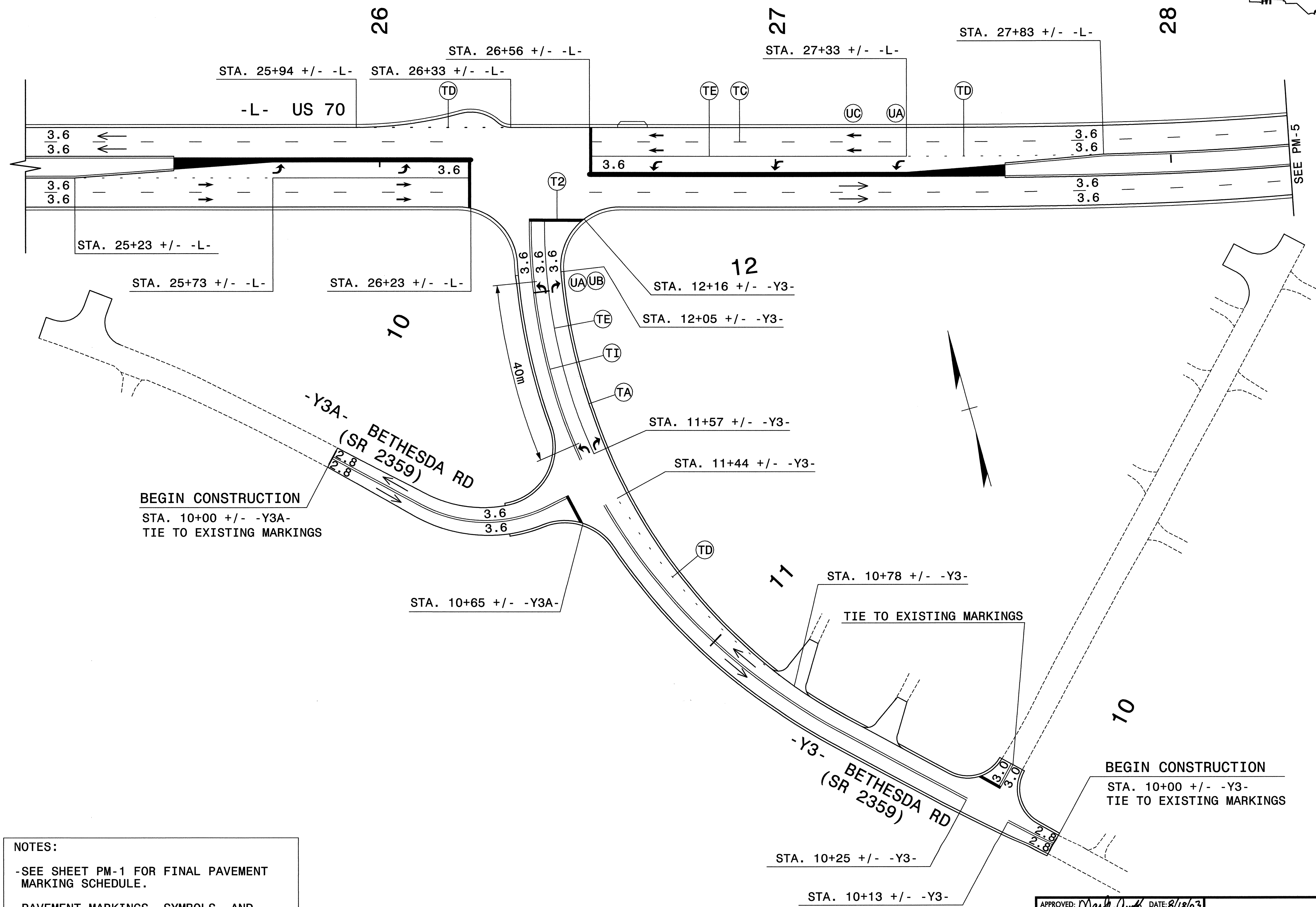




PROJ. REFERENCE NO.	SHEET NO.
R-2911A	PM-4



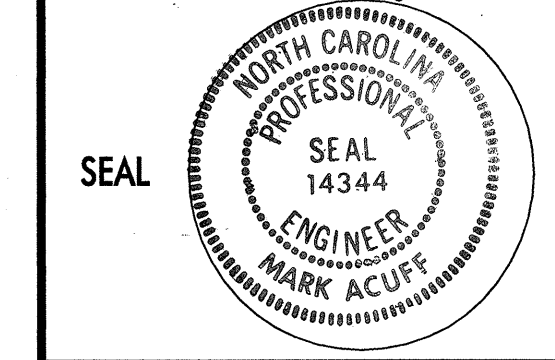
BEGIN CONSTRUCTION
 STA. 10+00 +/- -Y3A-
 TIE TO EXISTING MARKINGS

BEGIN CONSTRUCTION
 STA. 10+00 +/- -Y3-
 TIE TO EXISTING MARKINGS

NOTES:

- SEE SHEET PM-1 FOR FINAL PAVEMENT MARKING SCHEDULE.
- PAVEMENT MARKINGS, SYMBOLS, AND CHARACTERS TO BE MARKED ACCORDING TO ROADWAY STANDARD DRAWINGS UNLESS OTHERWISE NOTED IN THE PLANS.
- PAVEMENT MARKERS ARE TO BE SPACED ACCORDING TO THE ROADWAY STANDARD DRAWINGS.

APPROVED: *Mark Duff* DATE: 8/18/03



PAVEMENT MARKING PLAN		REVISIONS	
SCALE:	NONE		
DATE:	8-20-03		
DWG. BY:	B.L.M.		
DESIGN BY:	B.L.M.		
REVIEWED BY:	M.S.A.		

Plans prepared by:
KO & ASSOCIATES, P.C.
 Consulting Engineers
 1011 SCHAUB DR., SUITE #202
 RALEIGH, N.C. 27606
 For Division of Highways

PAYTRAFFICSub JobsV291001007\PM4PMP
 08/18/2003 08:58:19 AM