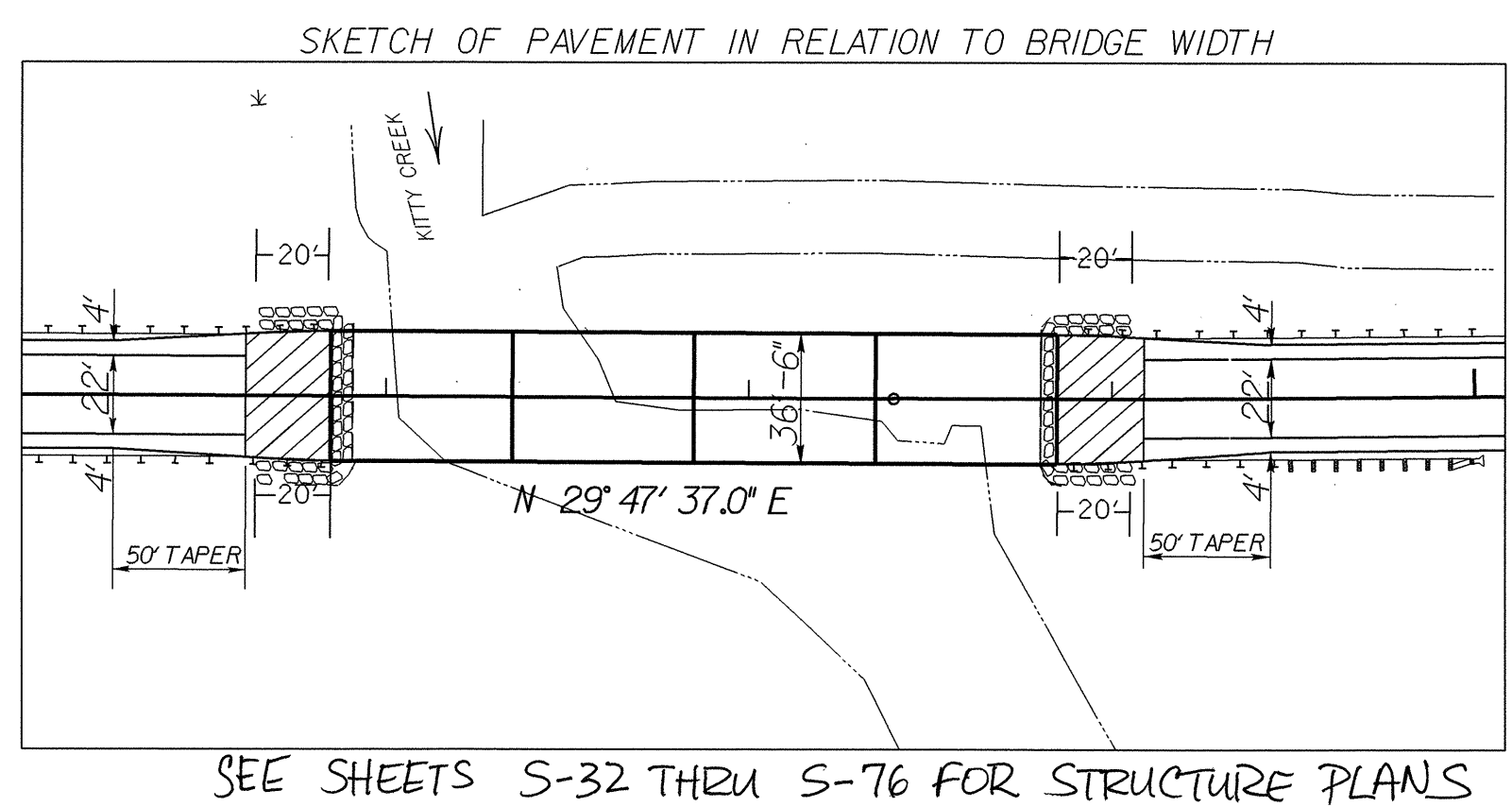
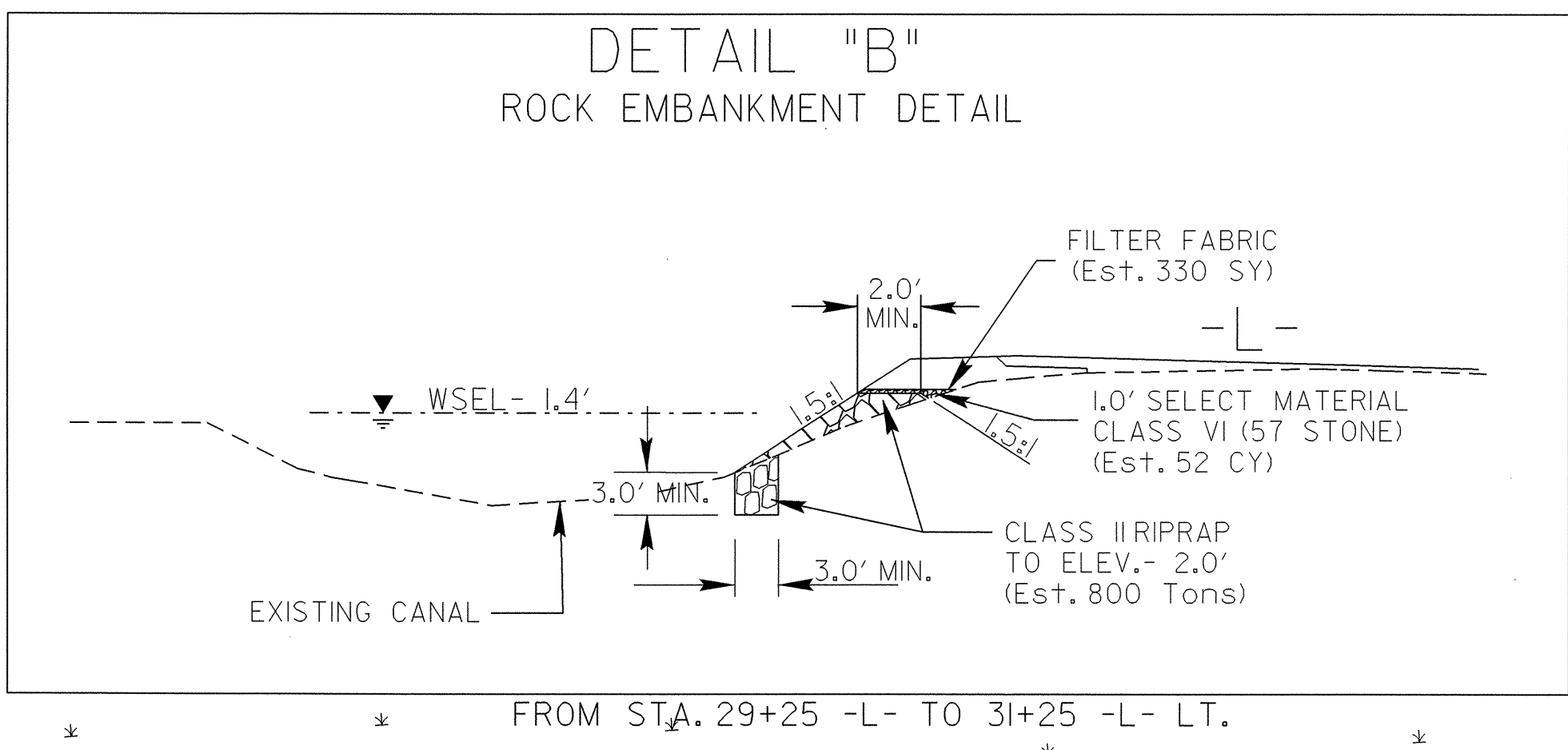


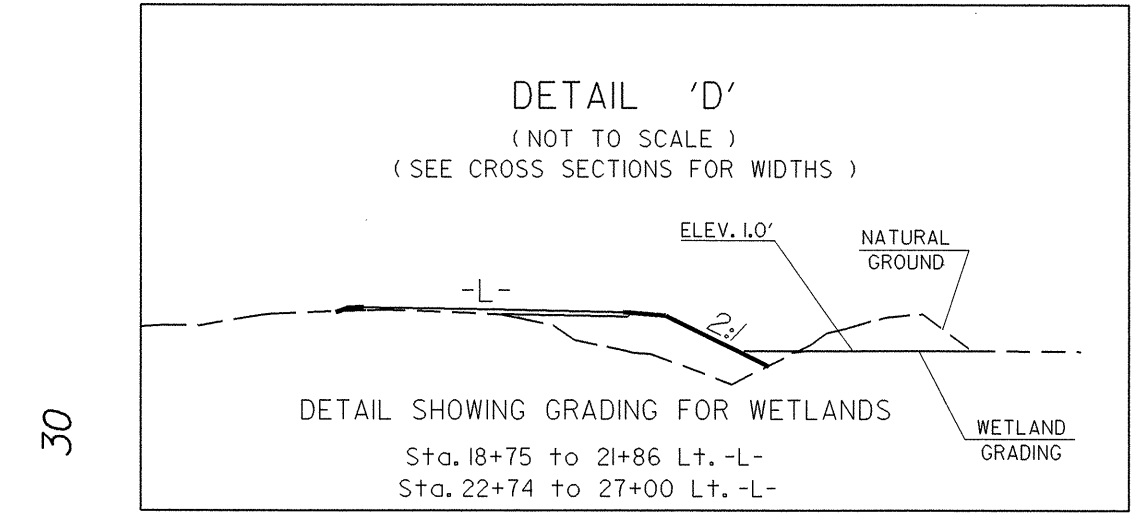
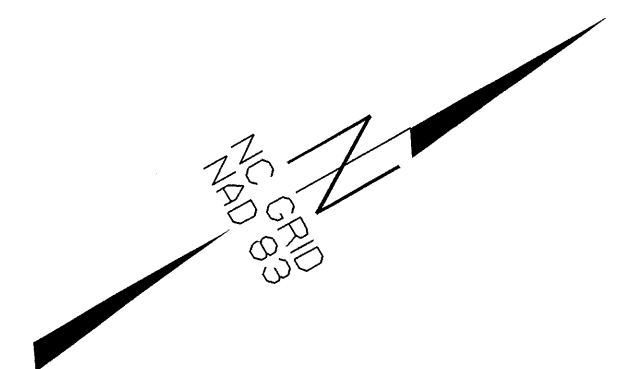
PROJECT REFERENCE NO. B-3348	SHEET NO. 5
RW SHEET NO.	
ROADWAY DESIGN ENGINEER NORTH CAROLINA PROFESSIONAL ENGINEER SEAL 15435 5/5/84 JOHN C. LANSFORD	HYDRAULICS ENGINEER NORTH CAROLINA PROFESSIONAL ENGINEER SEAL 16600 RANDALL C. HENNING



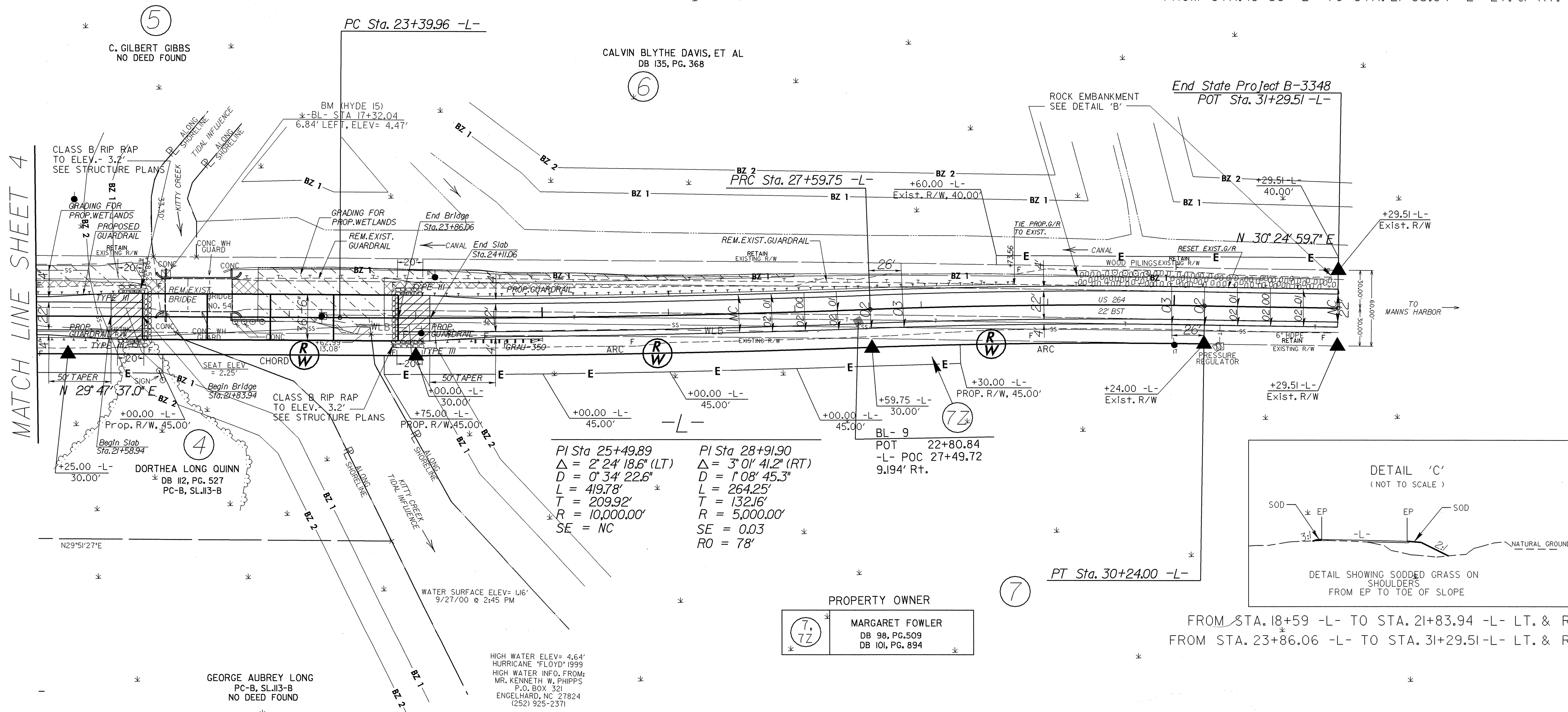
SEE SHEETS S-32 THRU S-76 FOR STRUCTURE PLANS



FROM STA. 29+25 -L- TO 31+25 -L- LT.



FROM STA. 10+00-L- TO STA. 18+09 -L- LT. & RT.
FROM STA. 18+59 -L- TO STA. 21+83.94 -L- LT. & RT.



MATCH LINE SHEET 4

$PI\ Sta\ 25+49.89$
 $\Delta = 2^\circ 24' 18.6\" (LT)$
 $D = 0^\circ 34' 22.6\"$
 $L = 419.78'$
 $T = 209.92'$
 $R = 10,000.00'$
 $SE = NC$

$PI\ Sta\ 28+91.90$
 $\Delta = 3^\circ 01' 41.2\" (RT)$
 $D = 1^\circ 08' 45.3\"$
 $L = 264.25'$
 $T = 132.16'$
 $R = 5,000.00'$
 $SE = 0.03$
 $RO = 78'$

$POT\ 22+80.84$
 $-L- POC\ 27+49.72$
 $9.194' RT.$

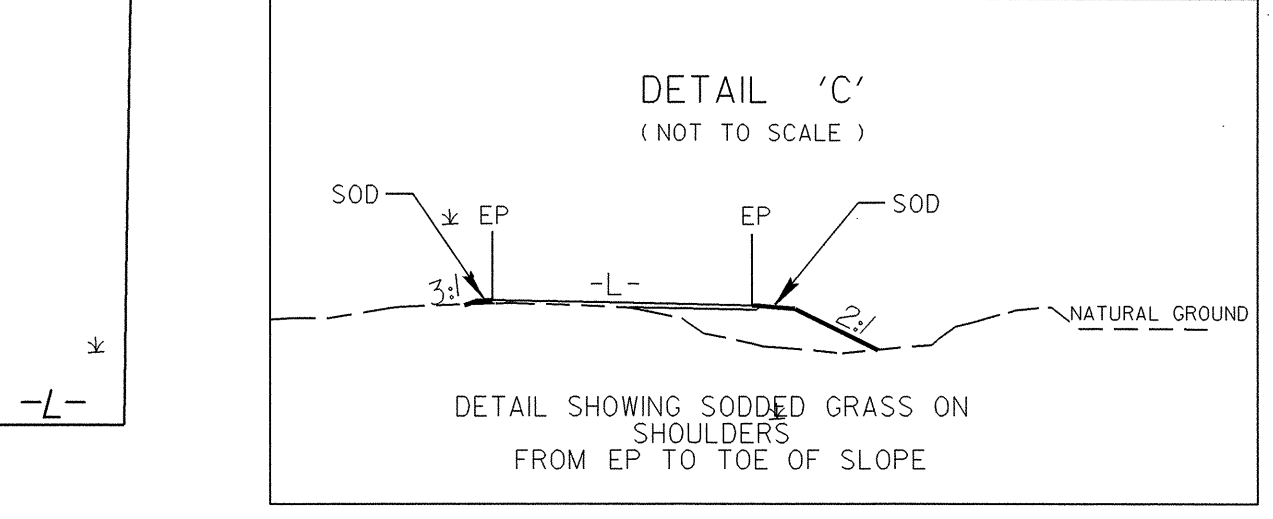
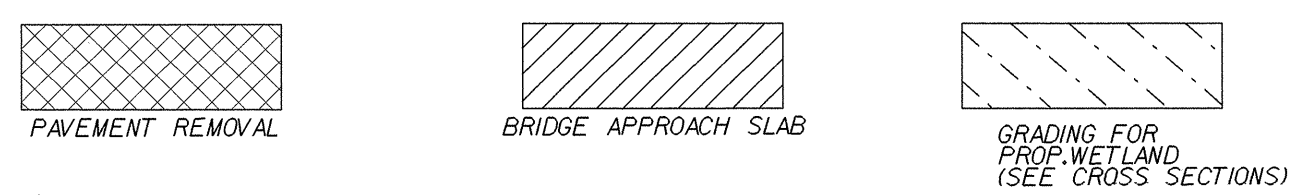
PROPERTY OWNER

7, 7Z

MARGARET FOWLER
DB 98, PG. 509
DB 101, PG. 894

GEORGE AUBREY LONG
PC-B, SL.II3-B
NO DEED FOUND

HIGH WATER ELEV= 4.64'
HURRICANE 'FLOYD' 1999
HIGH WATER INFO. FROM:
MR. KENNETH W. PHIPPS
P.O. BOX 321
ENGELHARD, NC 27824
(252) 929-2371



FROM STA. 18+59 -L- TO STA. 21+83.94 -L- LT. & RT.
FROM STA. 23+86.06 -L- TO STA. 31+29.51 -L- LT. & RT.