

PROJECT REFERENCE NO. B-3475 SHEET NO. 4

RW SHEET NO.

ROADWAY DESIGN ENGINEER: [Signature]

HYDRAULICS ENGINEER: [Signature]

TRAFFIC VOLUMES ADT 2004 2024

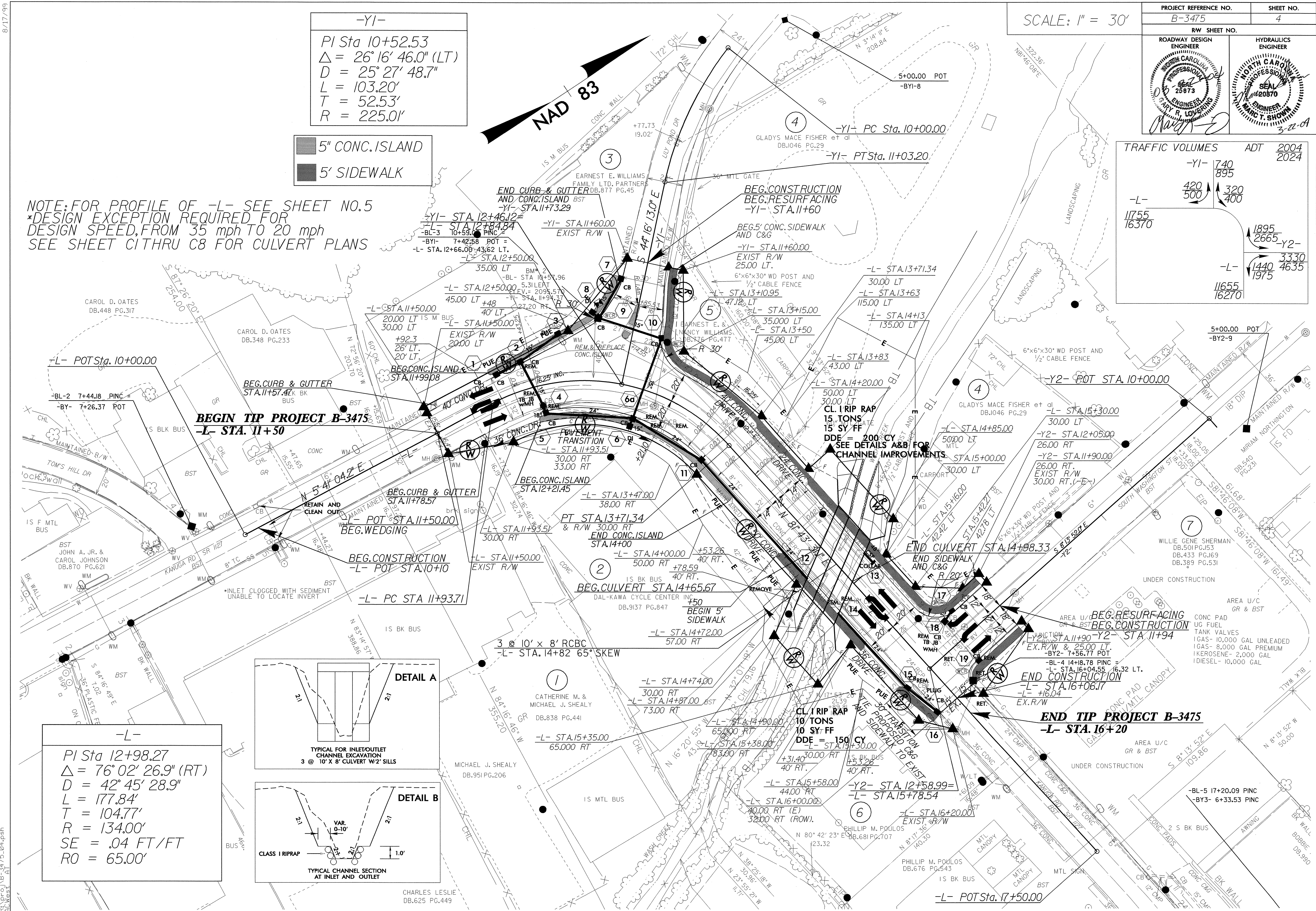
-Y1-	740	895
-L-	420	500
-L-	11755	16370
-Y2-	1895	2665
-L-	1440	1975
-L-	11655	16270

-Y1-

PI Sta 10+52.53
 $\Delta = 26^\circ 16' 46.0''$ (LT)
 $D = 25^\circ 27' 48.7''$
 $L = 103.20'$
 $T = 52.53'$
 $R = 225.01'$

5" CONC. ISLAND
 5' SIDEWALK

NOTE: FOR PROFILE OF -L- SEE SHEET NO.5
 *DESIGN EXCEPTION REQUIRED FOR DESIGN SPEED, FROM 35 mph TO 20 mph
 SEE SHEET CITHRU C8 FOR CULVERT PLANS



-L-

PI Sta 12+98.27
 $\Delta = 76^\circ 02' 26.9''$ (RT)
 $D = 42^\circ 45' 28.9''$
 $L = 177.84'$
 $T = 104.77'$
 $R = 134.00'$
 $SE = .04$ FT/FT
 $RO = 65.00'$

