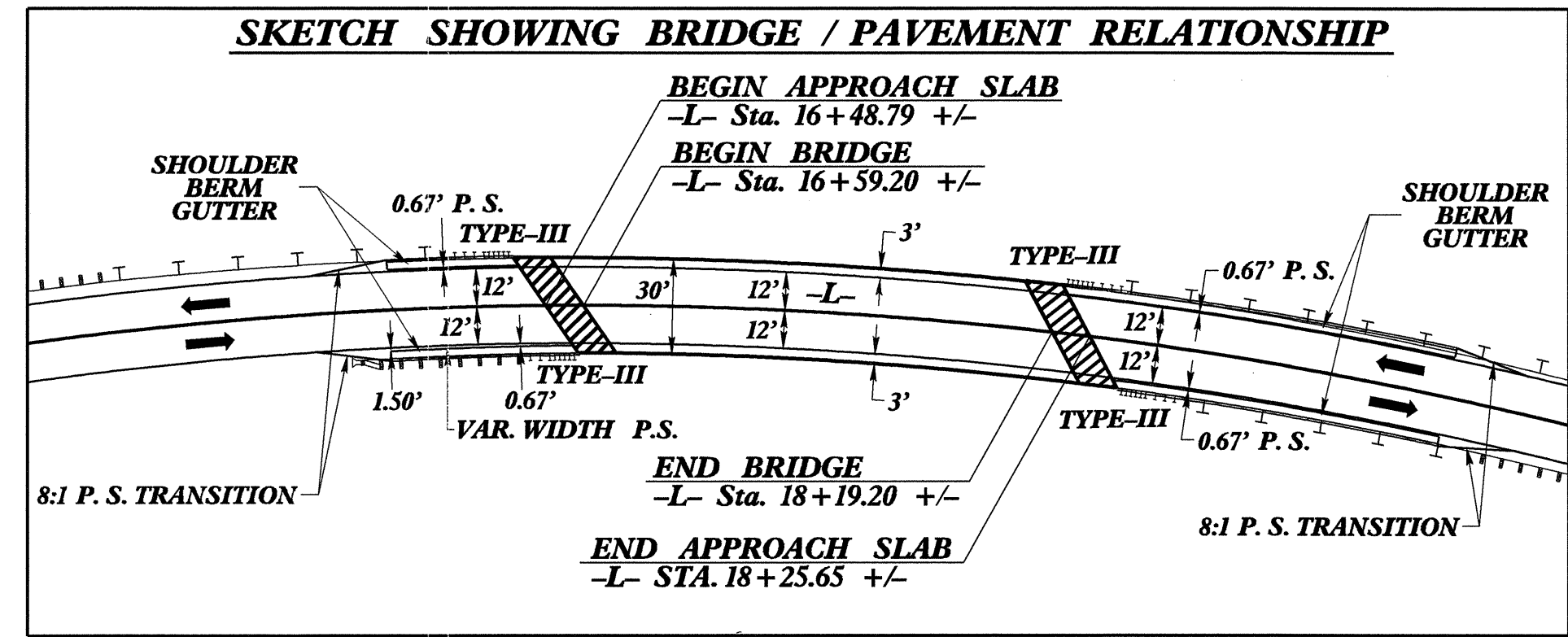


UTILITIES BY OTHERS

NOTE:
ALL PROPOSED UTILITY WORK
SHOWN ON THIS SHEET WILL
BE DONE BY OTHERS



SHOULDER BERM GUTTER
-L- STATION 16+00.00 TO 16+38.00 +/- LT.
-L- STATION 16+00.00 TO 16+54.00 +/- RT.
-L- STATION 18+23.00 +/- TO 19+40.00 LT.
-L- STATION 18+45.00 +/- TO 19+40.00 RT.

-L-
PI Sta 16+15.01
 $\Delta = 46^\circ 26' 58.5''$ (RT)
 $D = 4' 16'' 32.9''$
 $L = 1,086.32'$
 $T = 575.00'$
 $R = 1,340.00'$
S.E. = 0.06 (SEE PLANS)
INC. = 2'

-L- POT Sta. 10+00.00
BEGIN PROJECT B-3649

ABANDON

-L- PC Sta. 10+40.01

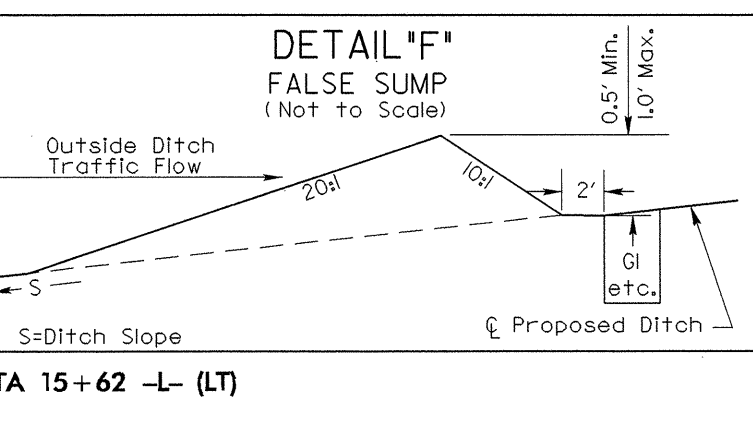
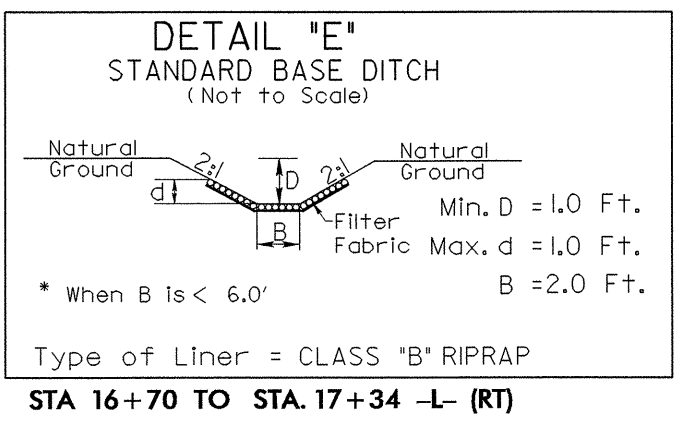
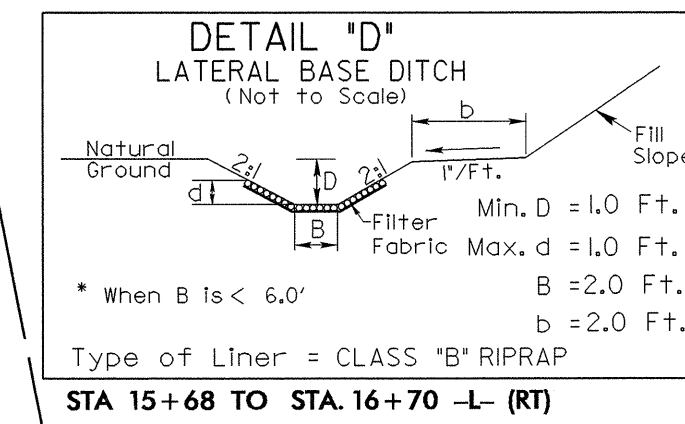
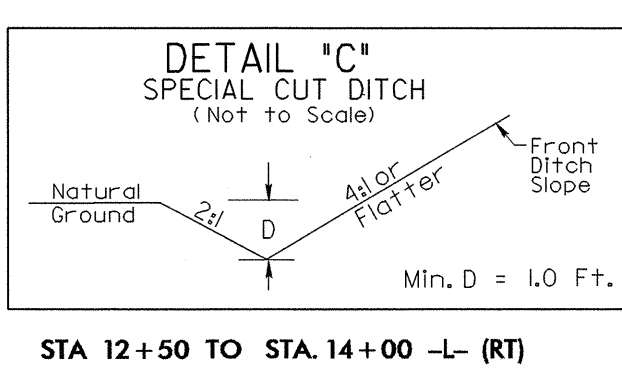
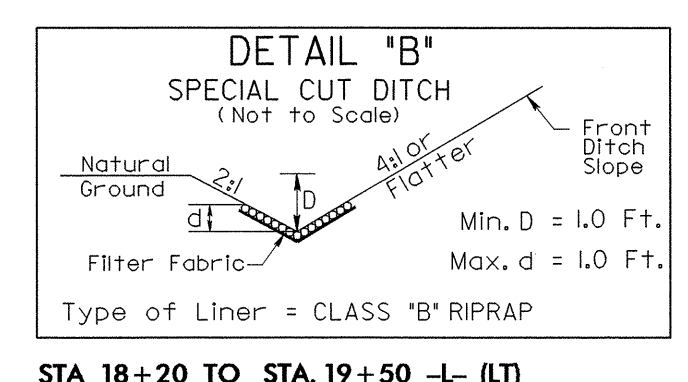
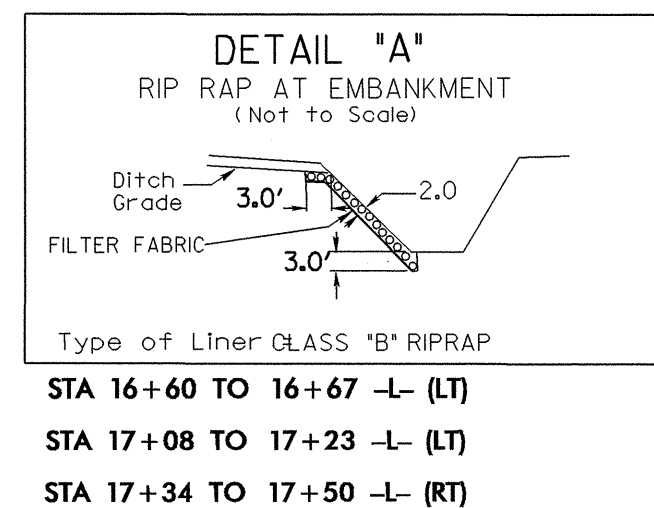
100' TRANSITION

+00.00 EX. RW

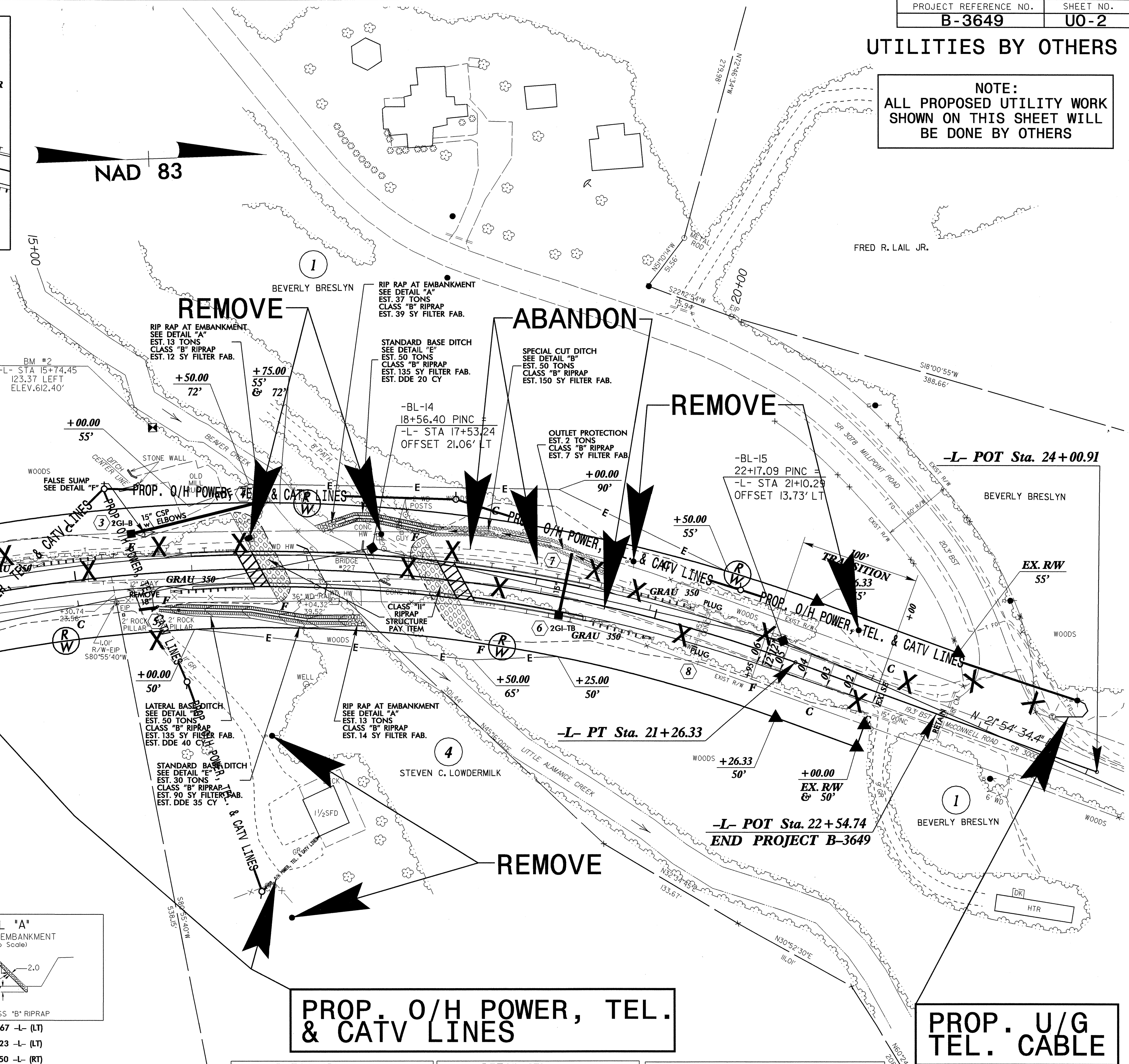
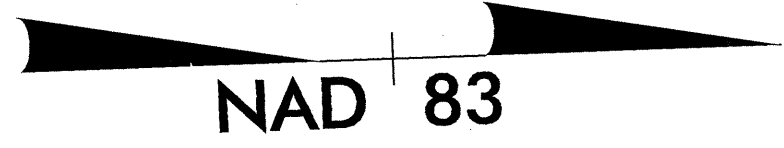
PROP. U/G TEL. CABLE

DATUM DESCRIPTION

THE LOCALIZED COORDINATE SYSTEM DEVELOPED FOR THIS PROJECT IS BASED ON THE STATE PLANE COORDINATES ESTABLISHED BY WOODOT FOR MONUMENT "B3649-1" WITH STATE PLANE GRID COORDINATES OF NORTHING: 8362289673(1) EASTING: 18033703303(1) THE AVERAGE COMBINED GRID FACTOR USED ON THIS PROJECT (GROUND TO GRID) IS: 0.999941580 THE N.C. LAMBERT GRID BEARING AND LOCALIZED HORIZONTAL GROUND DISTANCE FROM "B3649-1" TO -L- STATION 10+00.00 S 3° 32' 02.22" W 2,607.859 (ft) ALL LINEAR DIMENSIONS ARE LOCALIZED HORIZONTAL DISTANCES VERTICAL DATUM USED IS NAVD 88



FOR -L- PROFILE SEE SHEET 5
FOR STRUCTURE PLANS SEE SHEETS S-1 THRU S-?



REVISIONS

8/17/99

20-JAN-2004 13:53 B3649s_U02.psh
A:\Projects\B3649\Drawings\U02.dwg