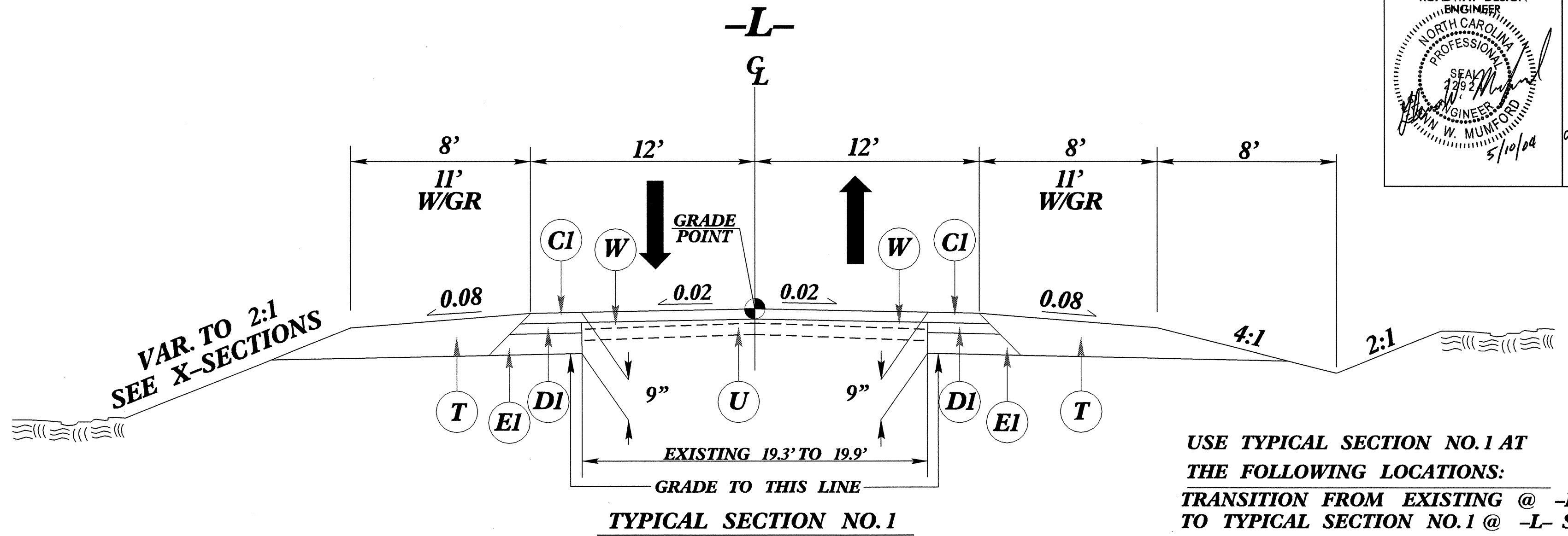
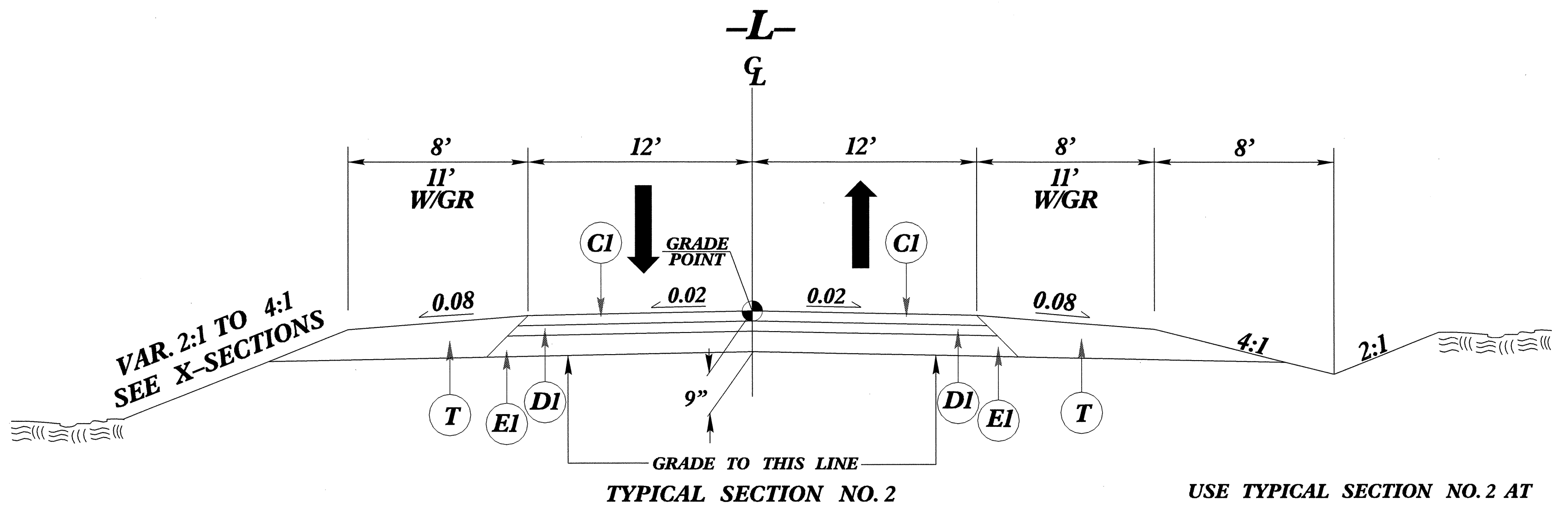


FINAL PAVEMENT SCHEDULE	
C1	PROP. APPROX. 2 1/2" ASPHALT CONCRETE SURFACE COURSE, TYPE S9.5B, AT AN AVERAGE RATE OF 140 LBS. PER SQ. YD. IN EACH OF TWO LAYERS.
C2	PROP. VAR. DEPTH ASPHALT CONCRETE SURFACE COURSE, TYPE S9.5B, AT AN AVERAGE RATE OF 112 LBS. PER SQ. YD. PER 1" DEPTH. TO BE PLACED IN LAYERS NOT LESS THAN 1 1/4" IN DEPTH OR GREATER THAN 1 1/2" IN DEPTH.
D1	PROP. APPROX. 2 1/2" ASPHALT CONCRETE INTERMEDIATE COURSE, TYPE I19.0B, AT AN AVERAGE RATE OF 285 LBS. PER SQ. YD.
D2	PROP. VAR. DEPTH ASPHALT CONCRETE INTERMEDIATE COURSE, TYPE I19.0B, AT AN AVERAGE RATE OF 114 LBS. PER SQ. YD. PER 1" DEPTH. TO BE PLACED IN LAYERS NOT LESS THAN 2 1/4" IN DEPTH OR GREATER THAN 4" IN DEPTH.
E1	PROP. APPROX. 4" ASPHALT CONCRETE BASE COURSE, TYPE B25.0B, AT AN AVERAGE RATE OF 456 LBS. PER SQ. YD.
E2	PROP. VAR. DEPTH ASPHALT CONCRETE BASE COURSE, TYPE B25.0B, AT AN AVERAGE RATE OF 114 LBS. PER SQ. YD. PER 1" DEPTH. TO BE PLACED IN LAYERS NOT LESS THAN 3" IN DEPTH OR GREATER THAN 5 1/2" IN DEPTH.
T	EARTH MATERIAL.
U	EXISTING PAVEMENT.
W	VARIABLE DEPTH ASPHALT PAVEMENT (SEE STANDARD WEDGING DETAILS NO. 1 & NO. 2)

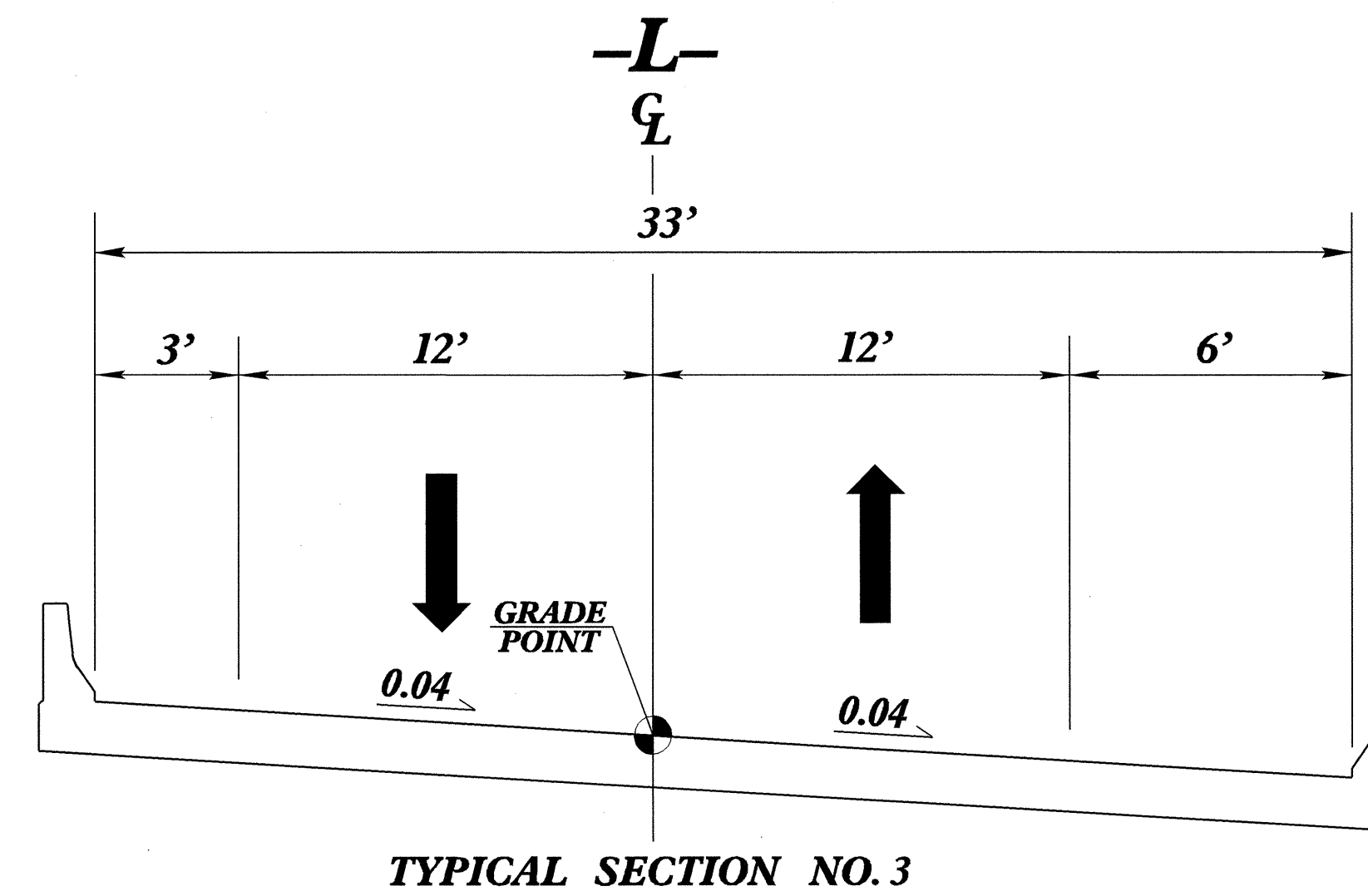
NOTE: PAVEMENT EDGE SLOPES ARE 1:1 UNLESS SHOWN OTHERWISE.



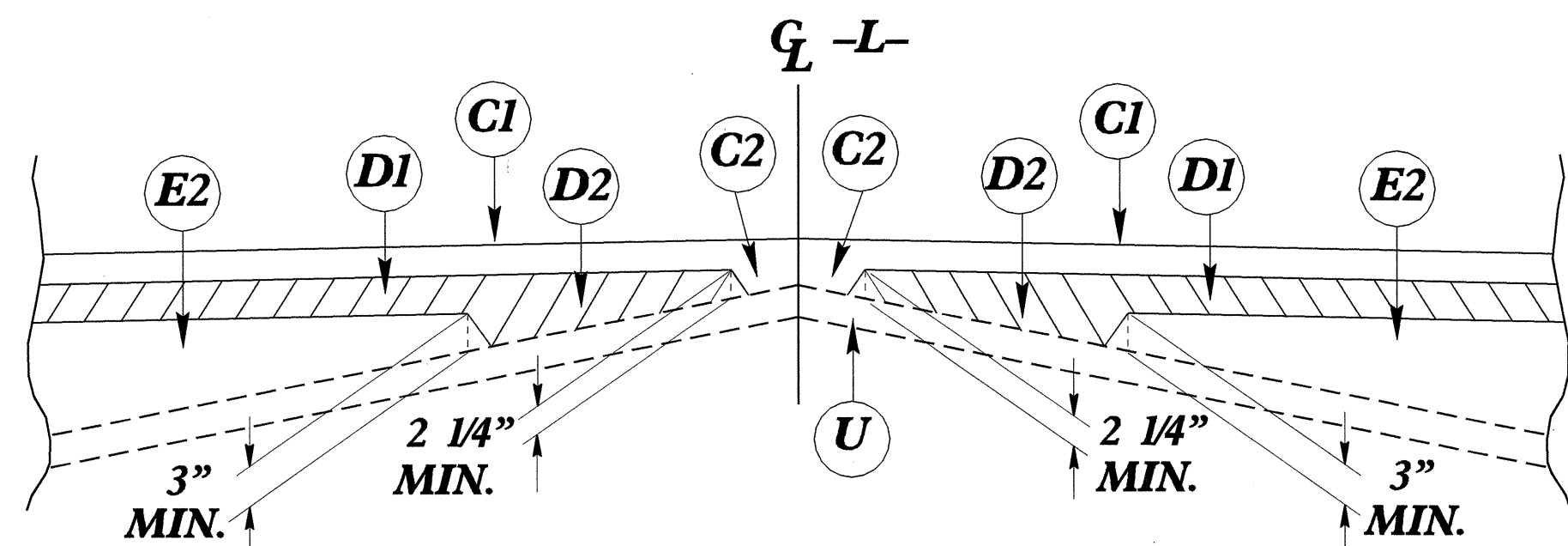
USE TYPICAL SECTION NO. 1 AT THE FOLLOWING LOCATIONS:
 TRANSITION FROM EXISTING @ -L- STA. 10+00.00 TO TYPICAL SECTION NO. 1 @ -L- STA. 11+00.00
 -L- STA. 11+00.00 TO 12+50.00
 -L- STA. 19+50.00 TO 22+00.00



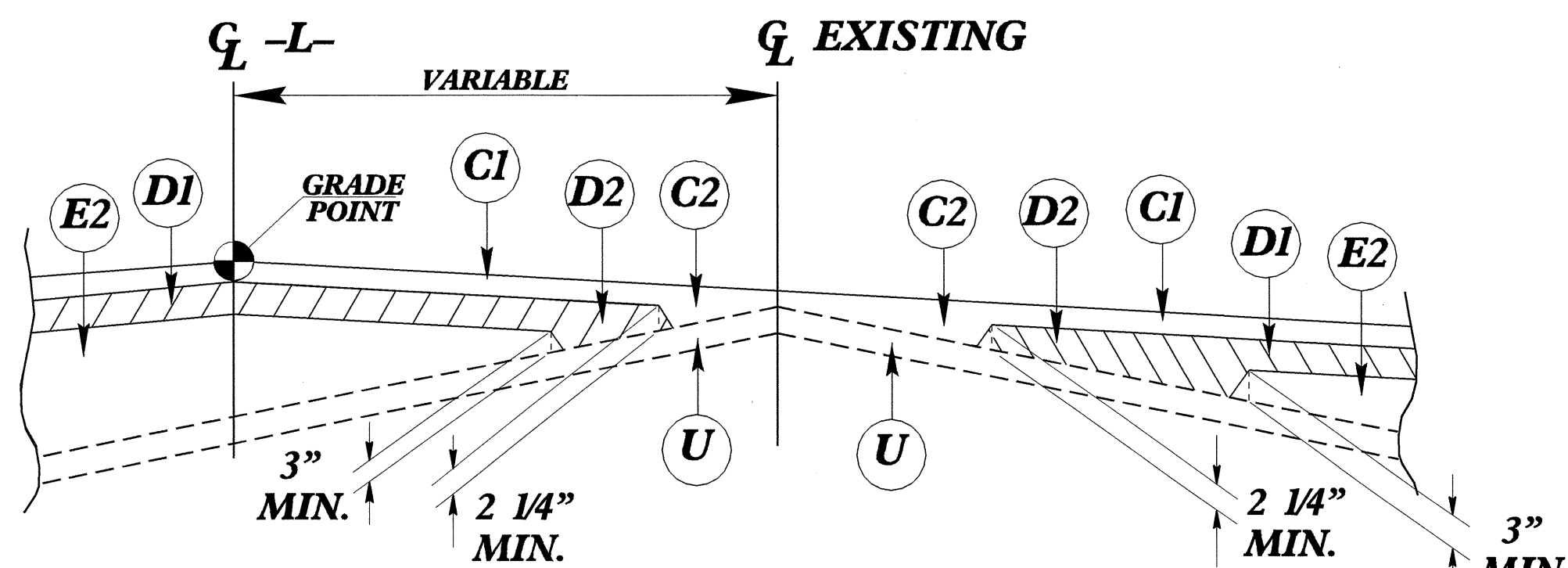
USE TYPICAL SECTION NO. 2 AT THE FOLLOWING LOCATIONS:
 -L- STA. 12+50.00 TO 16+59.20 (BEGIN BRIDGE)
 -L- STA. 18+19.20 (END BRIDGE) TO 19+50.00



USE TYPICAL SECTION NO. 3 AT THE FOLLOWING LOCATION:
 -L- STA. 16+59.20 (BEGIN BRIDGE) TO -L- STA. 18+19.20 (END BRIDGE)



DETAIL SHOWING METHOD OF WEDGING NO. 1
 USE IN CONJUNCTION WITH TYPICAL SECTION NO. 1



DETAIL SHOWING METHOD OF WEDGING NO. 2
 USE IN CONJUNCTION WITH TYPICAL SECTION NO. 1