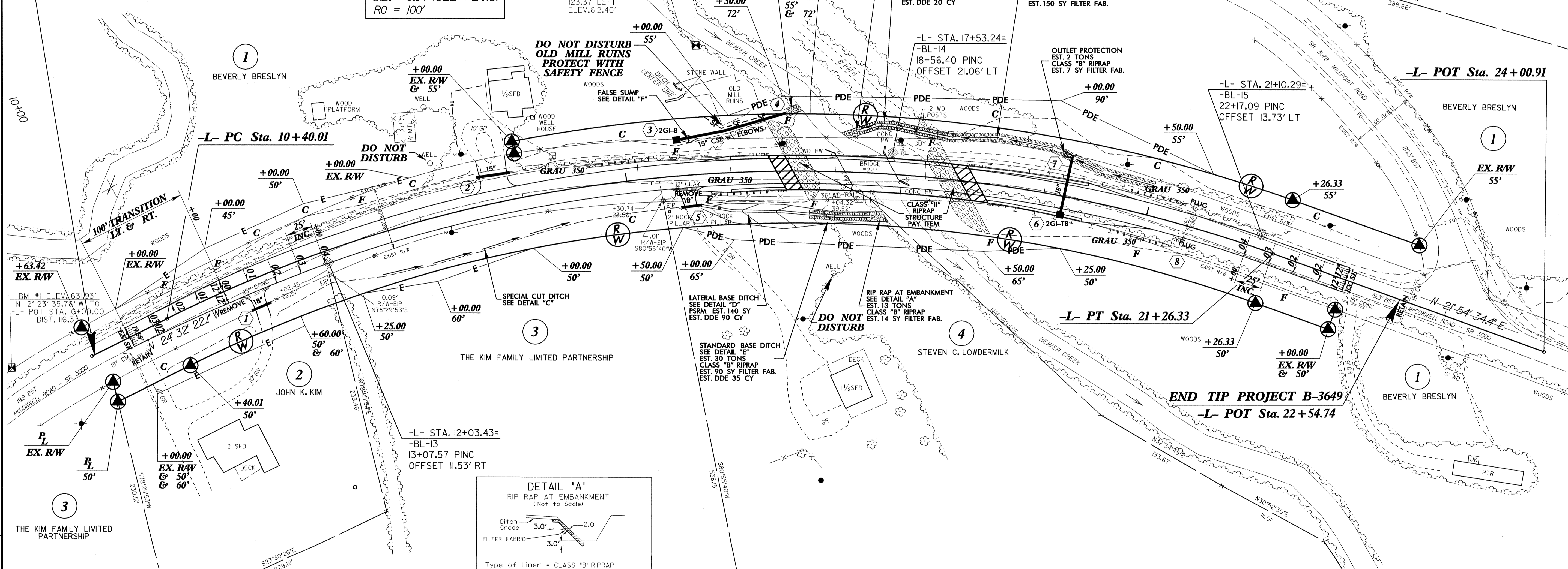


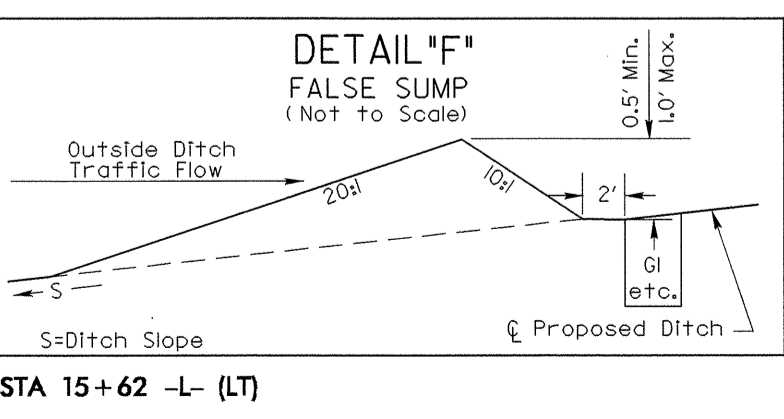
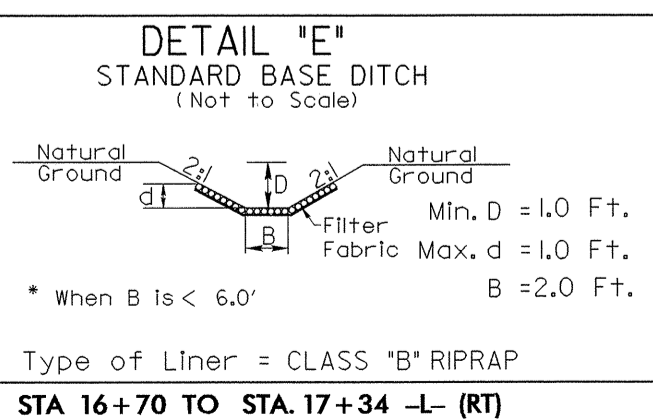
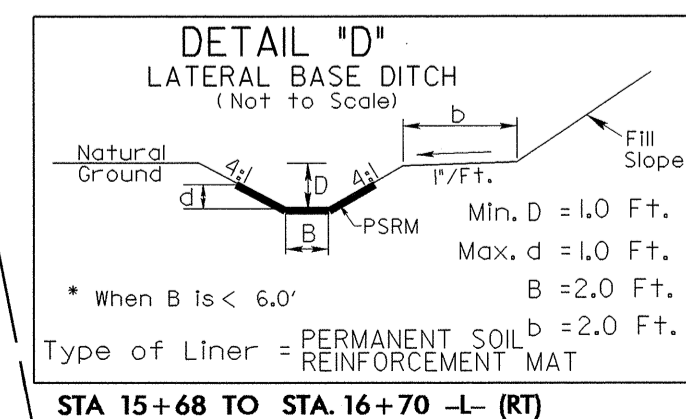
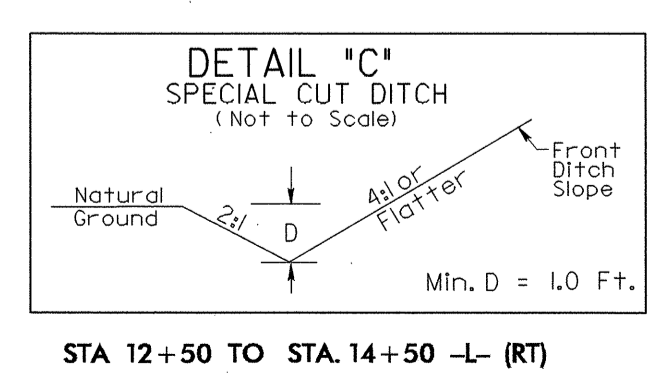
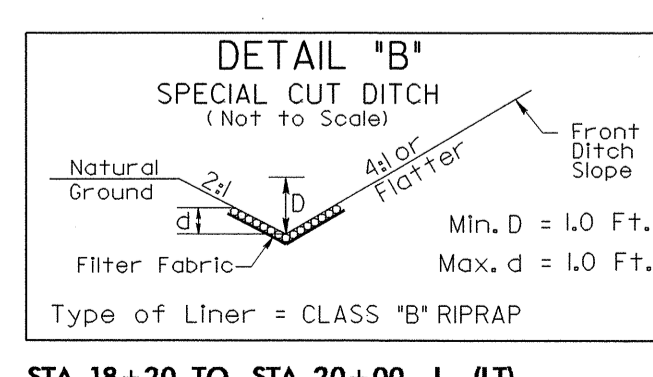
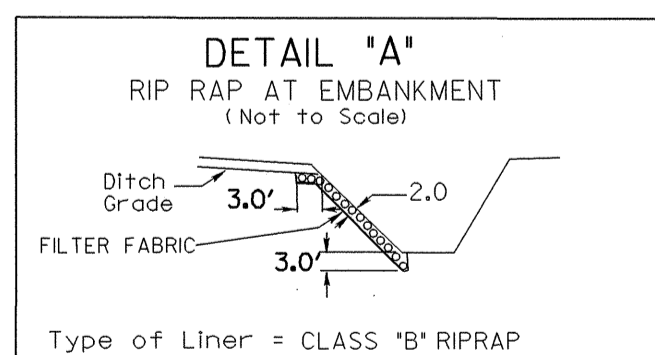
**SHOULDER BERM GUTTER**  
 -L- STATION 16+00.00 TO 16+35.61 LT.  
 -L- STATION 16+00.00 TO 16+53.08 RT.  
 -L- STATION 18+24.44 TO 19+40.00 LT.  
 -L- STATION 18+48.06 TO 19+40.00 RT.

**-L-**  
 PI Sta 16+15.01  
 $\Delta = 46^\circ 26' 56.5''$  (RT)  
 $D = 4' 16' 32.9''$   
 $L = 1,086.32'$   
 $T = 575.00'$   
 $R = 1,340.00'$   
 S.E. = 0.04 (SEE PLANS)  
 RO = 100'

**BEGIN TIP PROJECT B-3649**  
 -L- POT Sta. 9+62.64



**DATUM DESCRIPTION**  
 THE LOCALIZED COORDINATE SYSTEM DEVELOPED FOR THIS PROJECT IS BASED ON THE STATE PLANE COORDINATES ESTABLISHED BY NCDOT FOR MONUMENT "B3649-1" WITH STATE PLANE GRID COORDINATES OF NORTHING: 836228.9673(1) EASTING: 1803370.3303(1). THE AVERAGE COMBINED GRID FACTOR USED ON THIS PROJECT (GROUND TO GRID) IS: 0.999941580. THE N.C. LAMBERT GRID BEARING AND LOCALIZED HORIZONTAL GROUND DISTANCE FROM "B3649-1" TO -L- STATION 10+00.00 S 3° 32' 02.22" W 2,607.859 (1). ALL LINEAR DIMENSIONS ARE LOCALIZED HORIZONTAL DISTANCES. VERTICAL DATUM USED IS NAVD 88.



**ALL DRIVEWAY RADII ARE 10' UNLESS NOTED OTHERWISE**  
**FOR -L- PROFILE SEE SHEET 5**  
**FOR STRUCTURE PLANS SEE SHEETS S-1 THRU S-32**