

**SUPERSTRUCTURE REINFORCING STEEL LENGTHS ARE BASED ON THE FOLLOWING MINIMUM SPLICE LENGTHS**

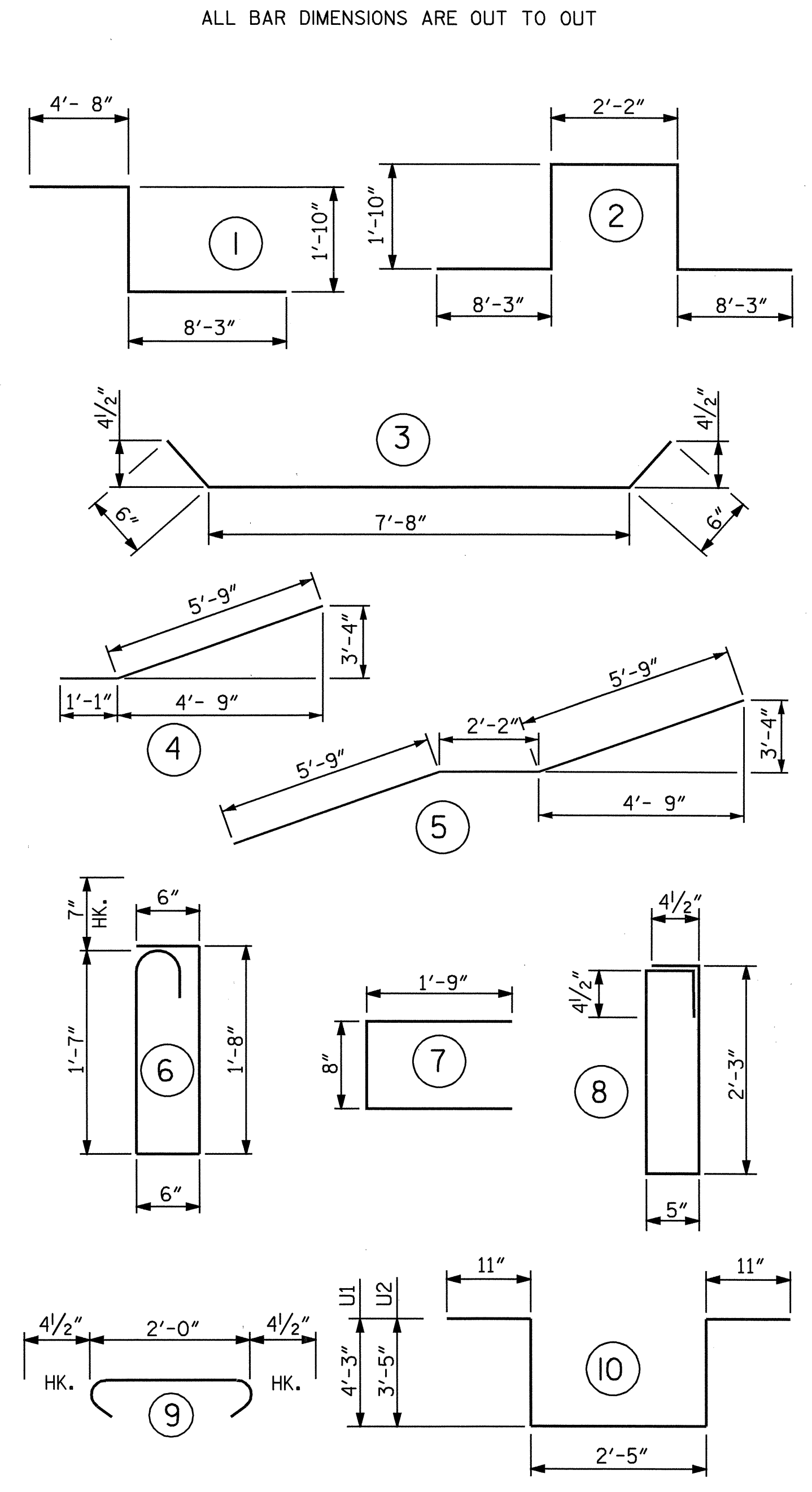
BAR SIZE	SUPERSTRUCTURE EXCEPT APPROACH SLABS, PARAPET, AND BARRIER RAIL		APPROACH SLABS		PARAPET AND BARRIER RAIL
	EPOXY COATED	UNCOATED	EPOXY COATED	UNCOATED	
#4	2'-0"	1'-9"	2'-0"	1'-9"	2'-9"
#5	2'-6"	2'-2"	2'-6"	2'-2"	3'-5"
#6	3'-0"	2'-7"	3'-10"	2'-7"	4'-4"
#7	5'-3"	3'-6"			
#8	6'-10"	4'-7"			

GROOVING BRIDGE FLOORS	
BRIDGE DECK	4710 SQ.FEET
TOTAL	4710 SQ.FEET

**REINFORCING BAR SCHEDULE**

BAR NO.	SIZE	TYPE	LENGTH	WEIGHT	BAR NO.	SIZE	TYPE	LENGTH	WEIGHT	BAR NO.	SIZE	TYPE	LENGTH	WEIGHT			
*A1	244	5	STR	35'-9"	9098	*A151	3	5	STR	33'-7"	105	*B1	50	4	STR	27'-9"	927
A2	244	5	STR	35'-9"	9098	A152	3	5	STR	31'-4"	98	B2	50	4	STR	44'-0"	4497
A3	6	6	STR	15'-6"	140	A153	3	5	STR	29'-1"	91	B3	48	7	STR	17'-0"	1668
*A101	3	5	STR	33'-5"	105	A154	3	5	STR	26'-10"	84	B4	25	4	STR	22'-6"	376
A102	3	5	STR	31'-0"	97	A155	3	5	STR	24'-8"	77	B5	114	5	STR	54'-3"	6450
A103	3	5	STR	28'-7"	89	A156	3	5	STR	22'-5"	70	*G1	1	5	STR	43'-8"	46
A104	3	5	STR	26'-2"	82	A157	3	5	STR	20'-2"	63	G2	1	5	STR	45'-8"	48
A105	3	5	STR	23'-9"	74	A158	3	5	STR	18'-0"	56	*K1	8	8	1	14'-9"	315
A106	3	5	STR	21'-5"	67	A159	3	5	STR	15'-9"	49	K2	8	8	2	22'-4"	477
A107	3	5	STR	19'-0"	59	A160	3	5	STR	11'-14"	35	K3	18	6	STR	9'-11"	268
A108	3	5	STR	16'-7"	52	A161	3	5	STR	9'-1"	28	K4	18	5	STR	8'-8"	163
A109	3	5	STR	14'-2"	44	A162	3	5	STR	6'-11"	22	K5	18	5	STR	8'-4"	156
A110	3	5	STR	11'-9"	37	A163	3	5	STR	4'-8"	15	K6	12	4	STR	9'-4"	75
A111	3	5	STR	9'-4"	29	A164	3	5	STR	2'-6"	8	K7	24	4	STR	10'-6"	168
A112	3	5	STR	6'-11"	22	A165	3	5	STR	2'-6"	8	K8	12	4	STR	9'-10"	79
A113	3	5	STR	4'-6"	14	A251	3	5	STR	33'-7"	105	K9	16	4	4	6'-10"	73
A114	3	5	STR	2'-1"	7	A252	3	5	STR	31'-4"	98	K10	16	4	5	13'-8"	146
A201	3	5	STR	33'-5"	105	A253	3	5	STR	29'-1"	91	*S1	54	5	6	4'-10"	272
A202	3	5	STR	31'-0"	97	A254	3	5	STR	26'-10"	84	S2	54	4	7	4'-2"	150
A203	3	5	STR	28'-7"	89	A255	3	5	STR	24'-8"	77	S3	81	4	8	6'-0"	325
A204	3	5	STR	26'-2"	82	A256	3	5	STR	22'-5"	70	S4	108	4	9	2'-9"	178
A205	3	5	STR	23'-9"	74	A257	3	5	STR	20'-2"	63	U1	48	4	10	12'-9"	409
A206	3	5	STR	21'-5"	67	A258	3	5	STR	18'-0"	56	U2	12	4	10	11'-1"	89
A207	3	5	STR	19'-0"	59	A259	3	5	STR	15'-9"	49	REINFORCING STEEL			LBS.	19,448	
A208	3	5	STR	16'-7"	52	A260	3	5	STR	13'-6"	42	* EPOXY COATED REINFORCING STEEL			LBS.	19,485	
A209	3	5	STR	14'-2"	44	A261	3	5	STR	11'-14"	35	* THESE BARS ARE EPOXY COATED					
A210	3	5	STR	11'-9"	37	A262	3	5	STR	9'-1"	28						
A211	3	5	STR	9'-4"	29	A263	3	5	STR	6'-11"	22						
A212	3	5	STR	6'-11"	22	A264	3	5	STR	4'-8"	15						
A213	3	5	STR	4'-6"	14	A265	3	5	STR	2'-6"	8						
A214	3	5	STR	2'-1"	7												

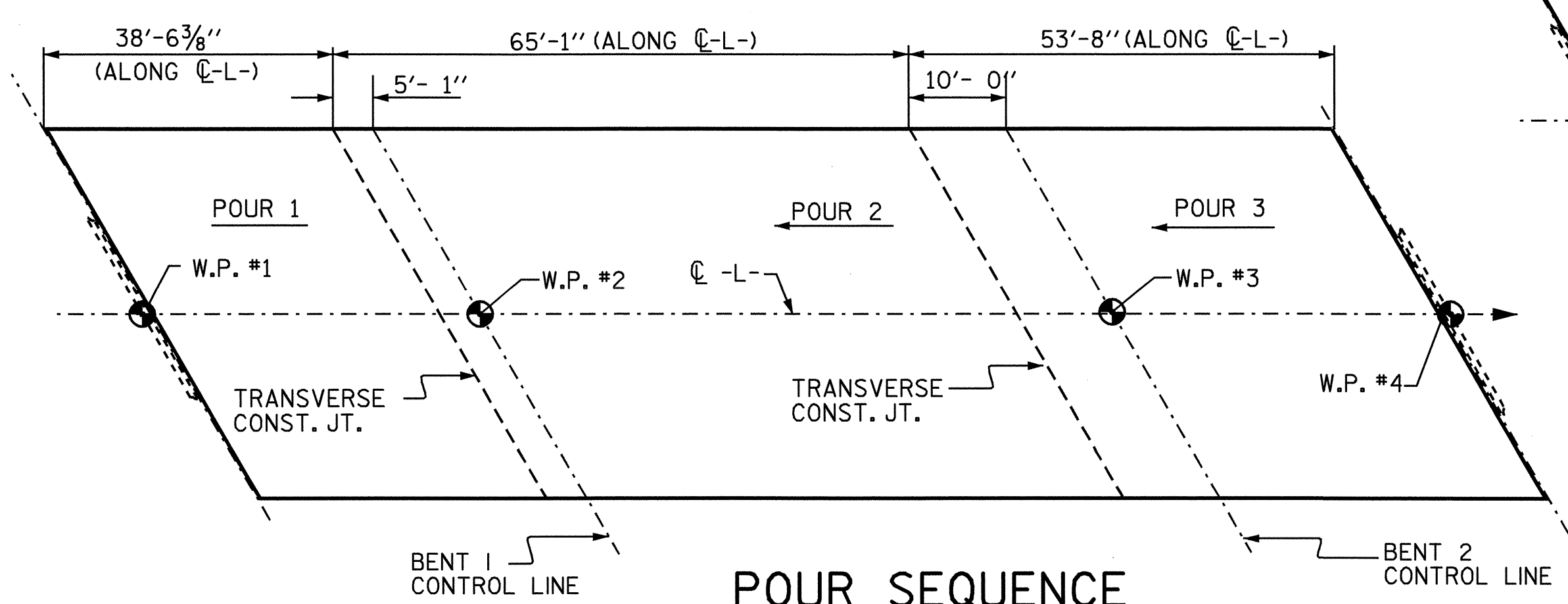
**BAR TYPES**



**SUPERSTRUCTURE BILL OF MATERIAL**

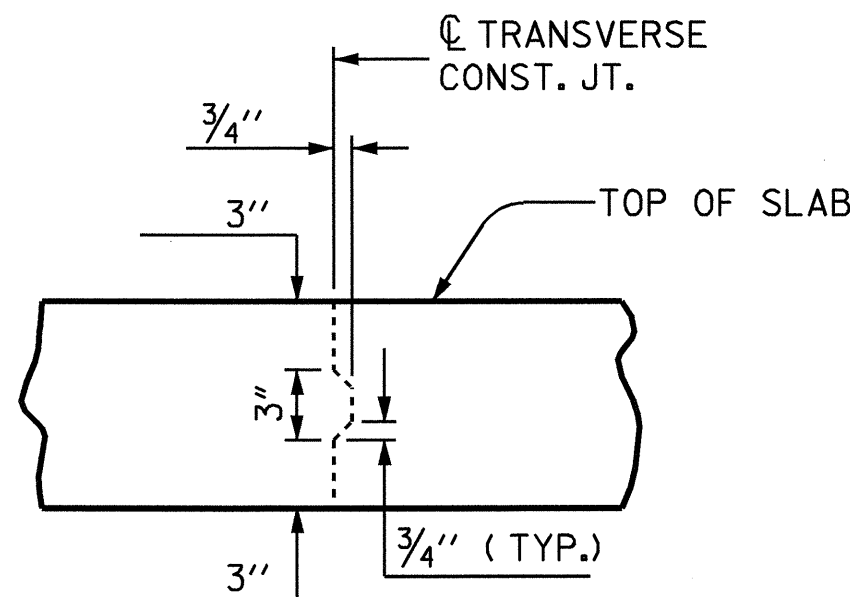
	CLASS AA CONCRETE (CU. YARDS)	REINFORCING STEEL (LBS.)	EPOXY COATED REINFORCING STEEL (LBS.)
POUR 1	45.0	19,448	19,485
POUR 2	79.1		
POUR 3	66.4		
** TOTALS	190.5	19,448	19,485

\*\* QUANTITIES FOR BARRIER RAIL ARE NOT INCLUDED



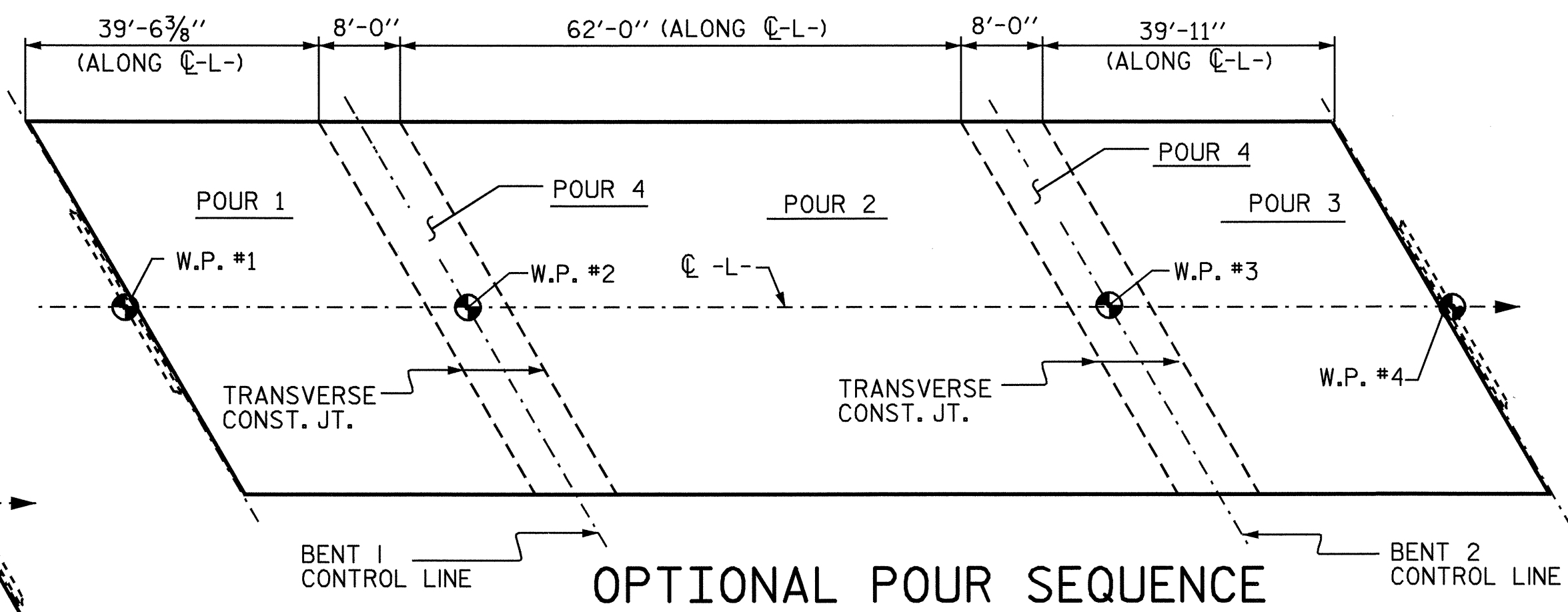
**POUR SEQUENCE**

TRANSVERSE CONST. JT. TO BE PLACED PARALLEL TO ADJACENT BENT CONTROL LINE



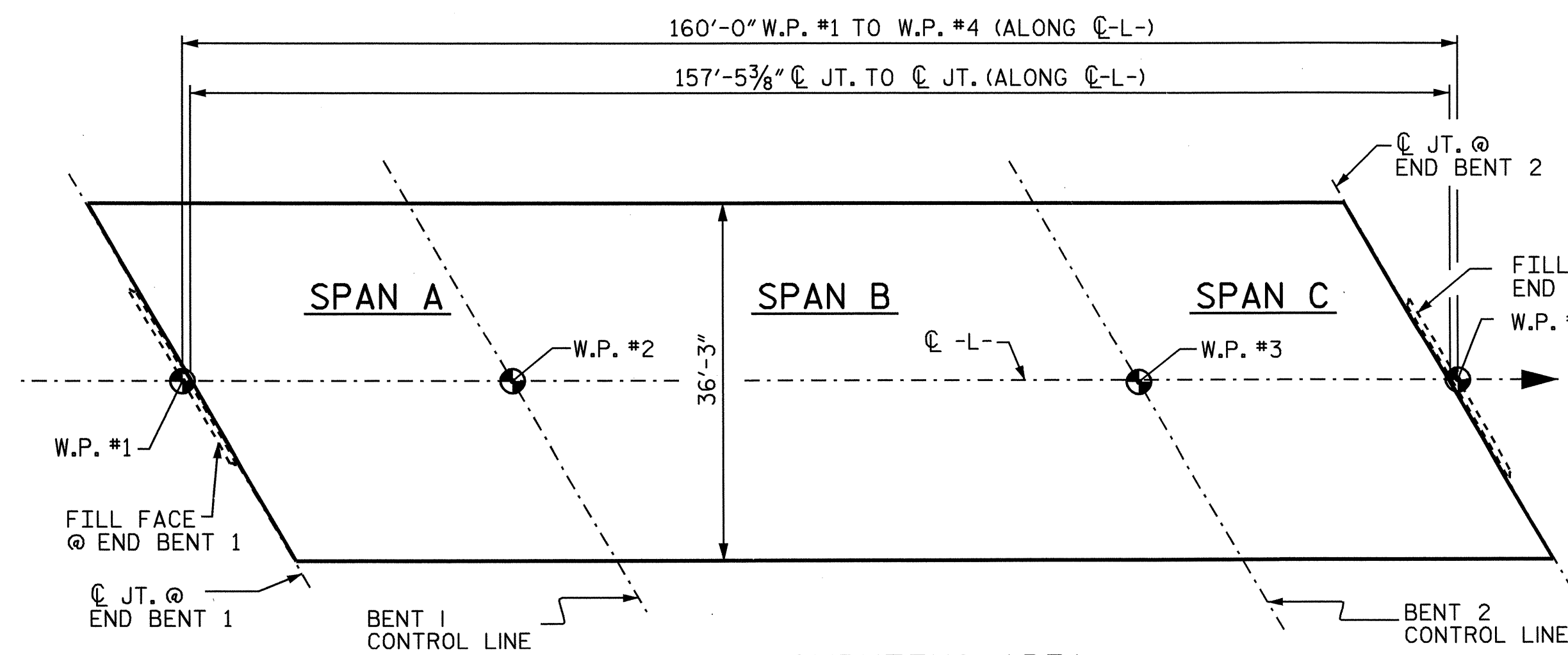
**TRANSVERSE CONSTRUCTION JOINT DETAIL**

NOTE: SLAB REINFORCING STEEL SHALL BE CONTINUOUS THRU JOINT



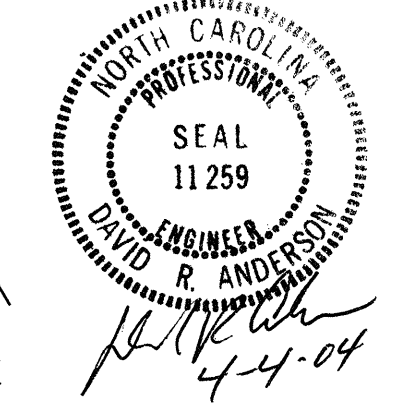
**OPTIONAL POUR SEQUENCE**

POUR 4 CAN NOT BE STARTED UNTIL BOTH ADJACENT POUR 1 AND POUR 2, OR, POUR 2 AND POUR 3 REACH MINIMUM OF 3000 PSI  
TRANSVERSE CONST. JT. TO BE PLACED PARALLEL TO ADJACENT BENT CONTROL LINE



LAYOUT FOR COMPUTING AREA OF REINFORCED CONCRETE DECK SLAB (SQ. FEET = 5,708)

PROJECT NO. **B-3649**  
GUILFORD COUNTY  
STATION: **17+39.20 -L-**



STATE OF NORTH CAROLINA  
DEPARTMENT OF TRANSPORTATION  
RALEIGH  
**SUPERSTRUCTURE BILL OF MATERIAL**

ASSEMBLED BY : N. Q. TRAN	DATE : 4-14-03
CHECKED BY : T. A. WALTER	DATE : 9-31-03
DRAWN BY : JMB 5/87	REV. 5/16/97 EEM/RGW
CHECKED BY : SJD 9/87	

REVISIONS						SHEET NO.
NO.	BY:	DATE:	NO.	BY:	DATE:	3-17
1			3			TOTAL SHEETS
2			4			32