

NOTES

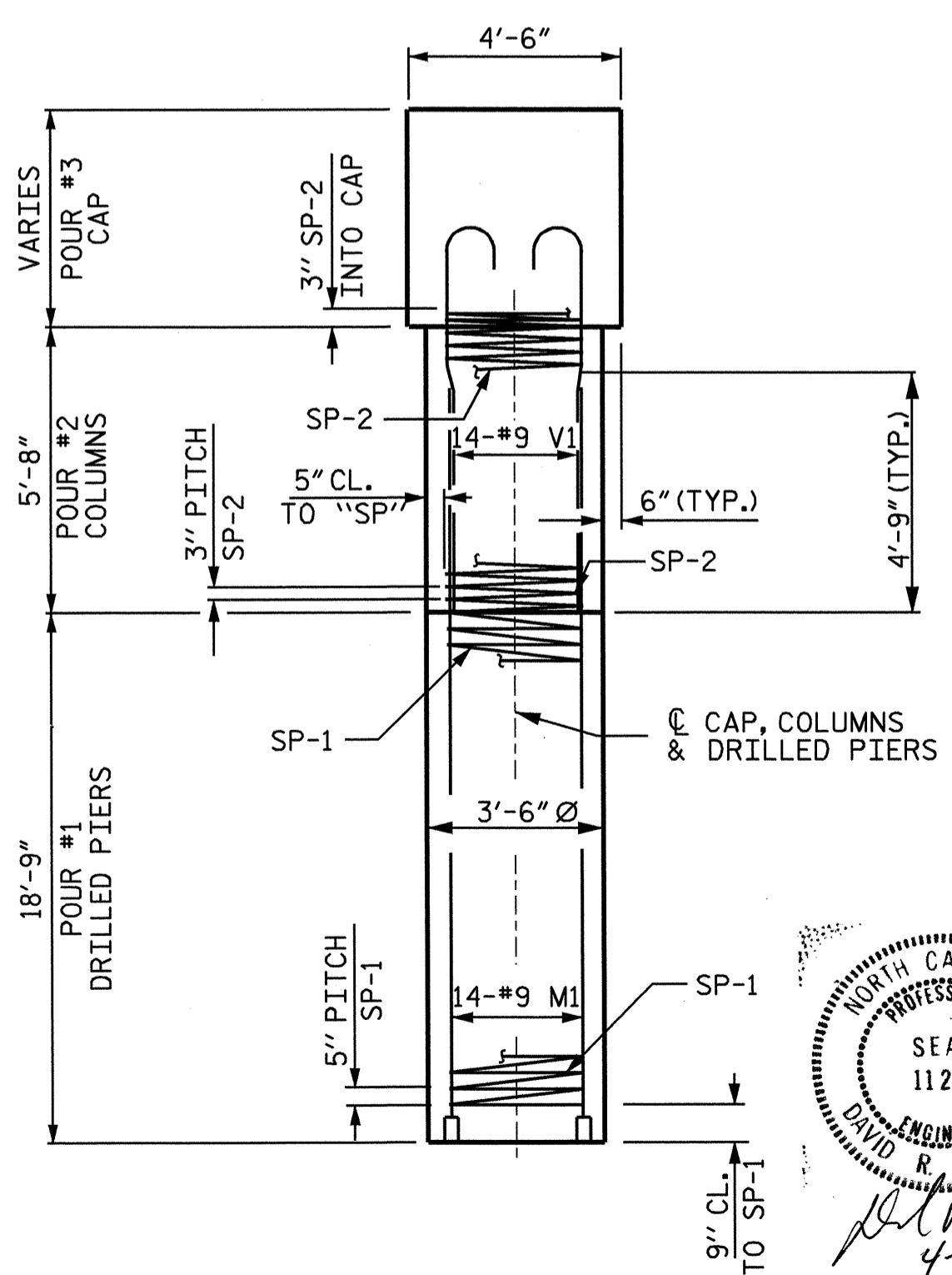
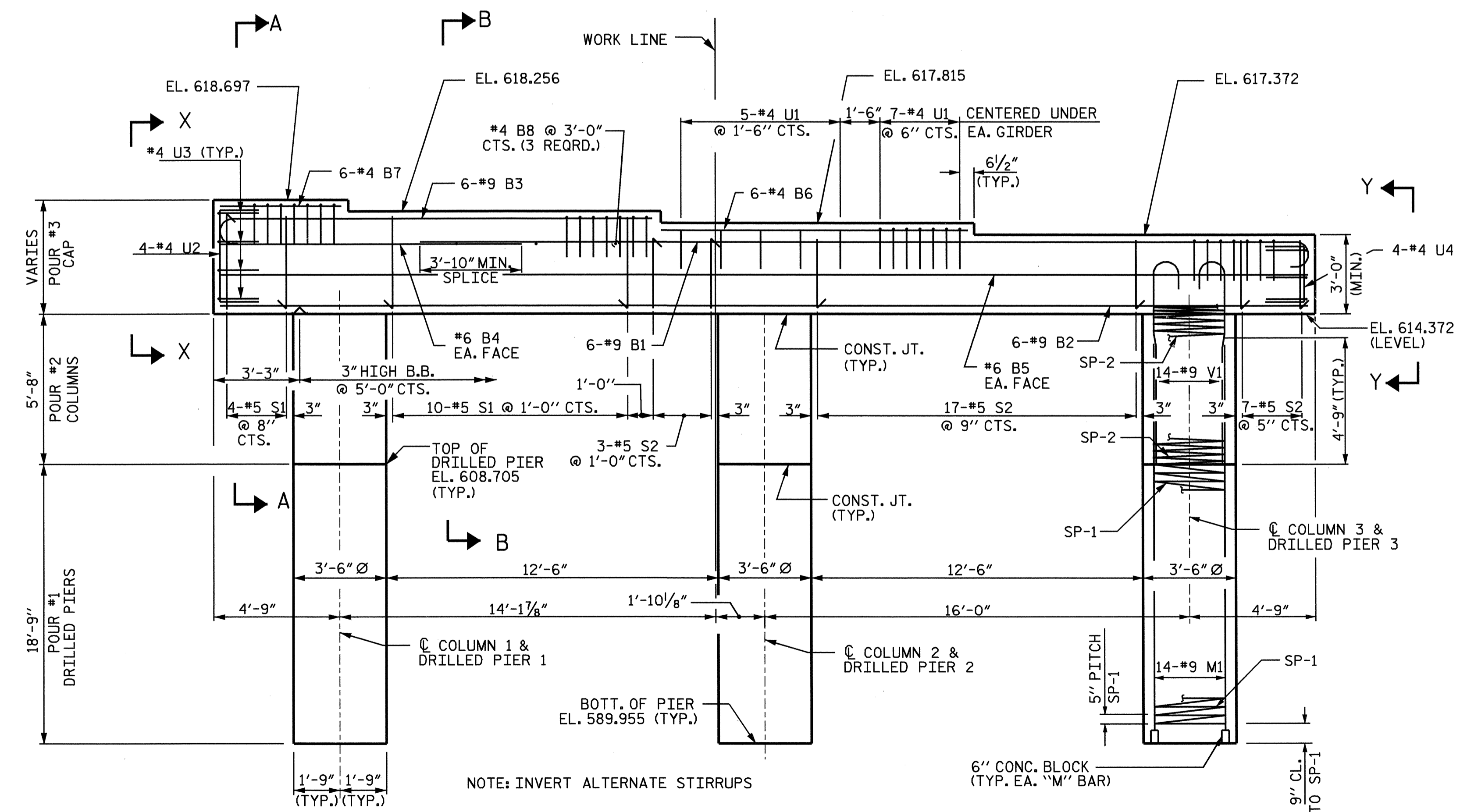
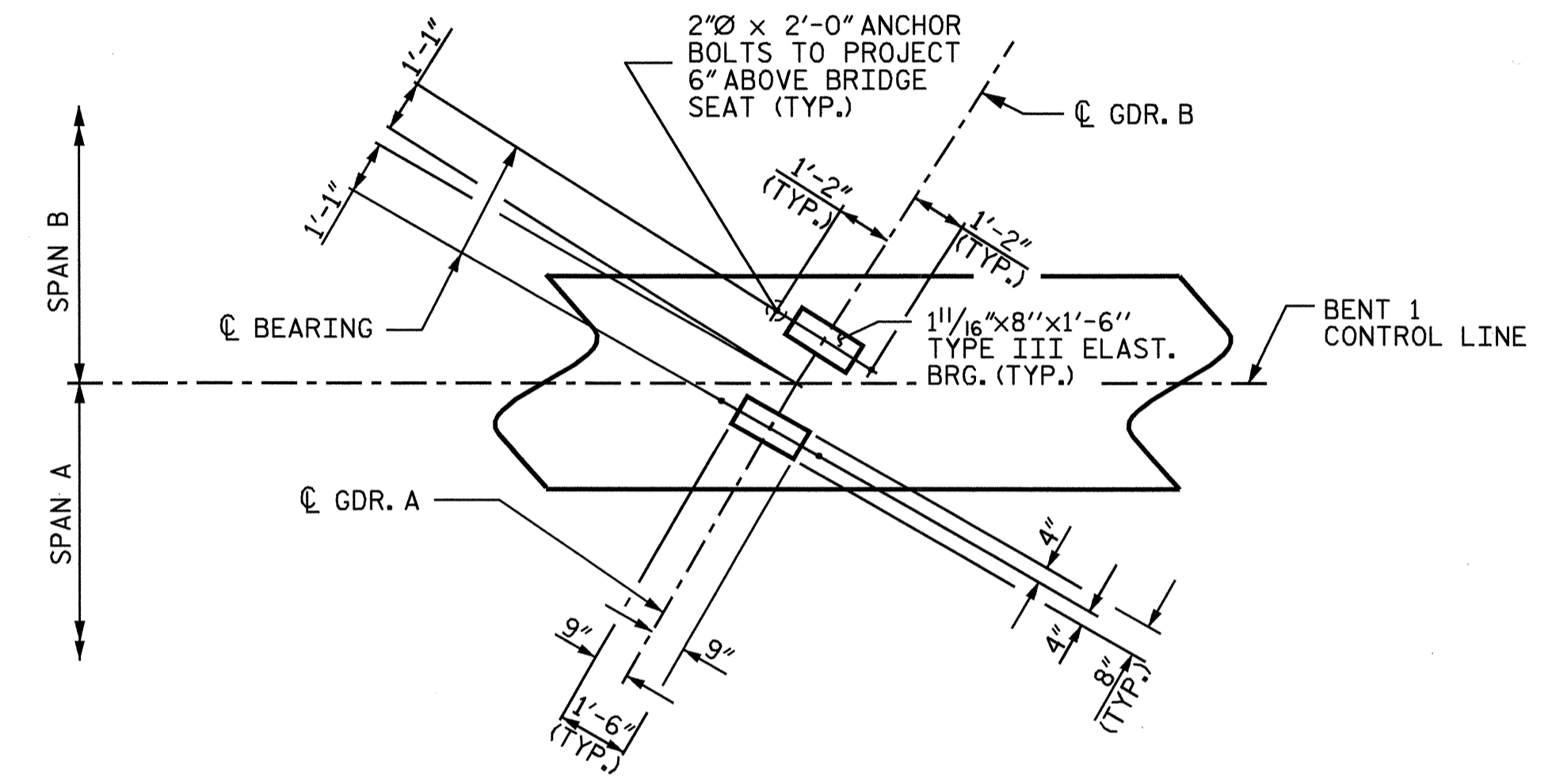
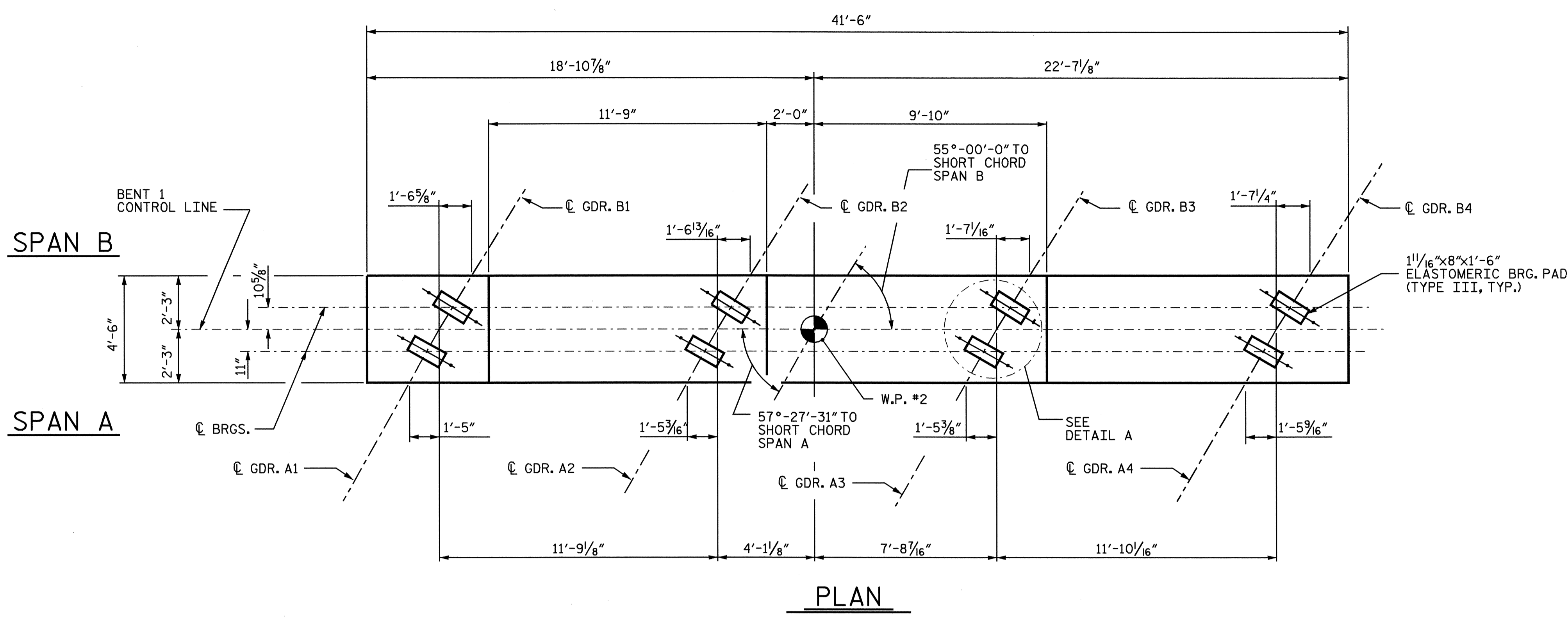
STIRRUPS IN CAP MAY BE SHIFTED AS NECESSARY TO CLEAR ANCHOR BOLTS.

THE CONTRACTOR SHALL ALIGN THE "V" & "M" BARS AS SHOWN IN THE PLAN OF DRILLED PIERS AND COLUMNS.

ALL STEEL IN THE DRILLED PIERS IS INCLUDED IN THE PAY ITEMS FOR REINFORCING STEEL AND SPIRAL COLUMN REINFORCING STEEL.

HOOKS ON "V" BARS MAY BE TURNED AS NECESSARY FOR PLACING REINFORCING STEEL.

THE CONTRACTOR'S ATTENTION IS CALLED TO THE FACT THAT THE LONGITUDINAL REINFORCEMENT FOR THE DRILLED PIER IS DETAILED WITH 3'-0" OF EXTRA LENGTH. FOR DRILLED PIERS, SEE SPECIAL PROVISIONS.

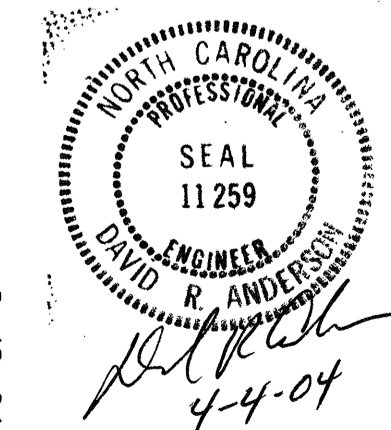


PROJECT NO. B-3649
 GUILFORD COUNTY
 STATION: 17+39.20 -L-

SHEET 1 OF 2

STATE OF NORTH CAROLINA
 DEPARTMENT OF TRANSPORTATION
 RALEIGH

**SUBSTRUCTURE
 BENT 1**



DRAWN BY: N. Q. TRAN DATE: DEC. 2003
 CHECKED BY: W. K. FISCHER DATE: 2/11/04

REVISIONS						SHEET NO.	
NO.	BY:	DATE:	NO.	BY:	DATE:	S-21	
1			3			TOTAL SHEETS	
2			4			32	