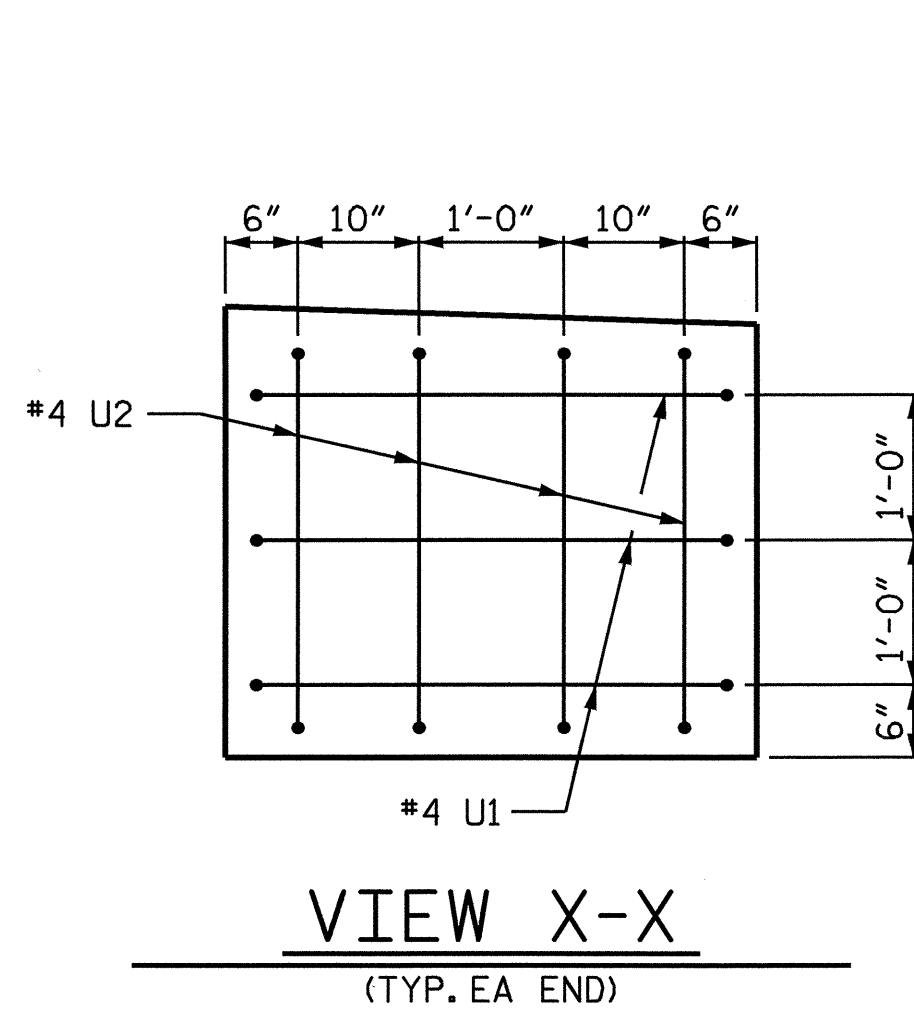
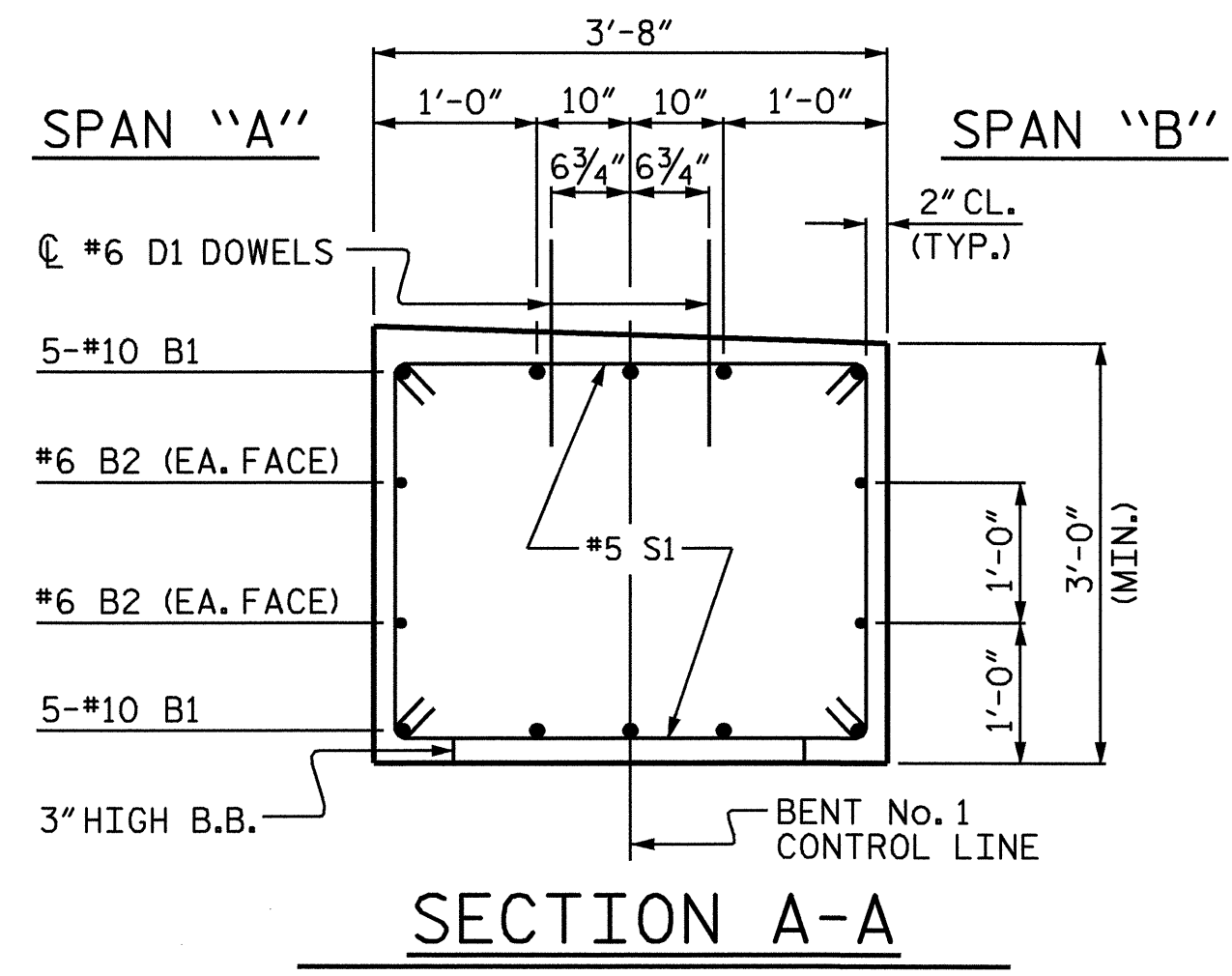


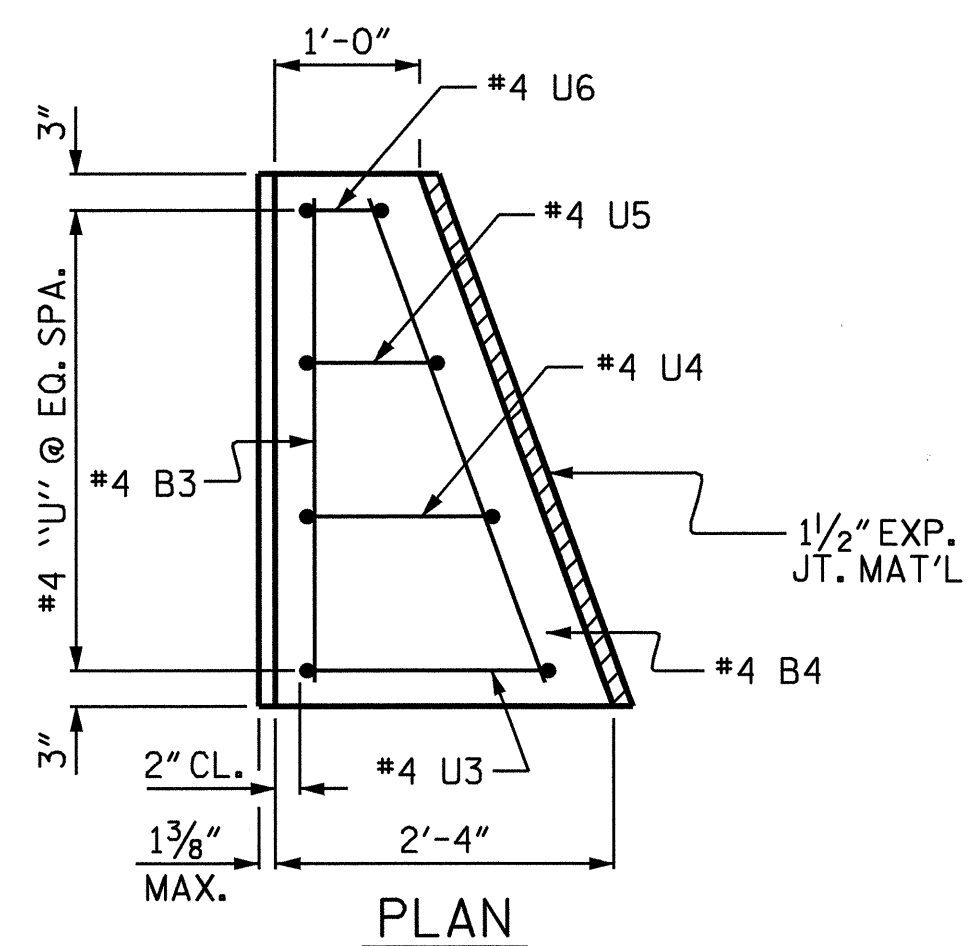
PLAN OF DRILLED PIERS



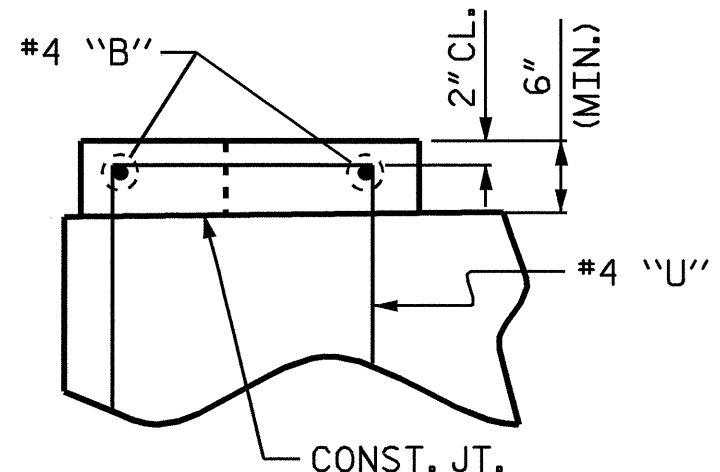
VIEW X-X
(TYP. EA. END)



SECTION A-A

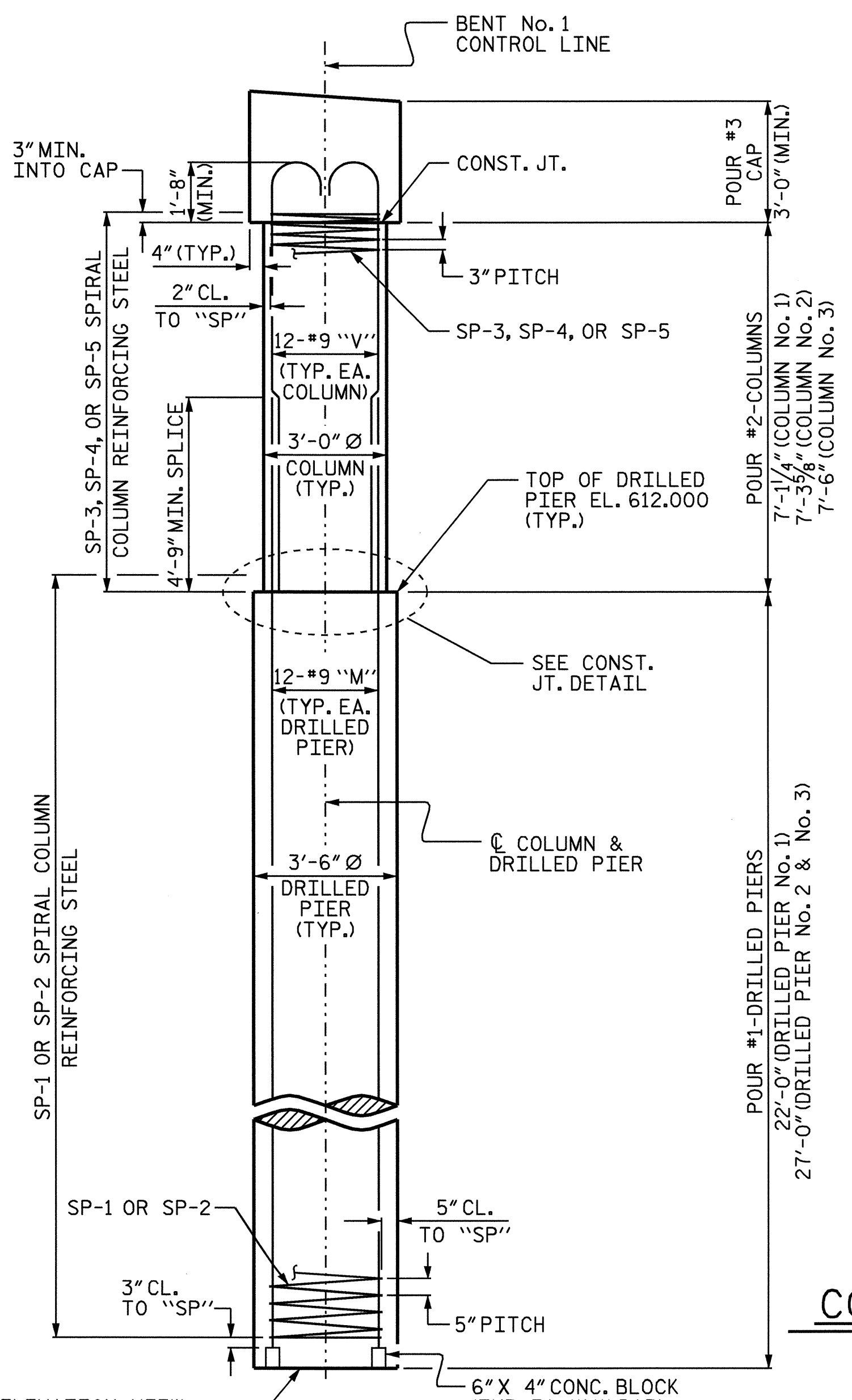


PLAN

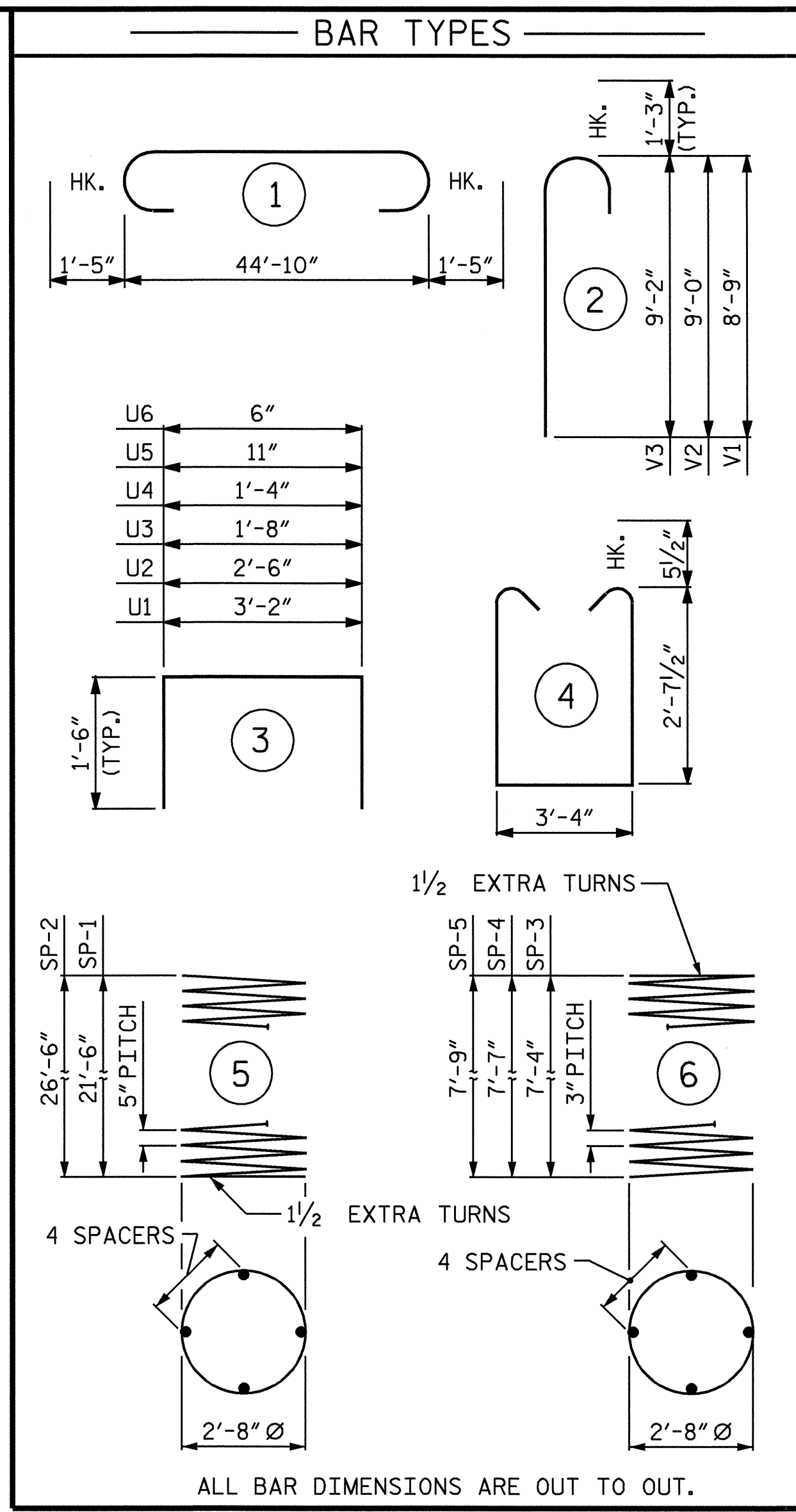


ELEVATION

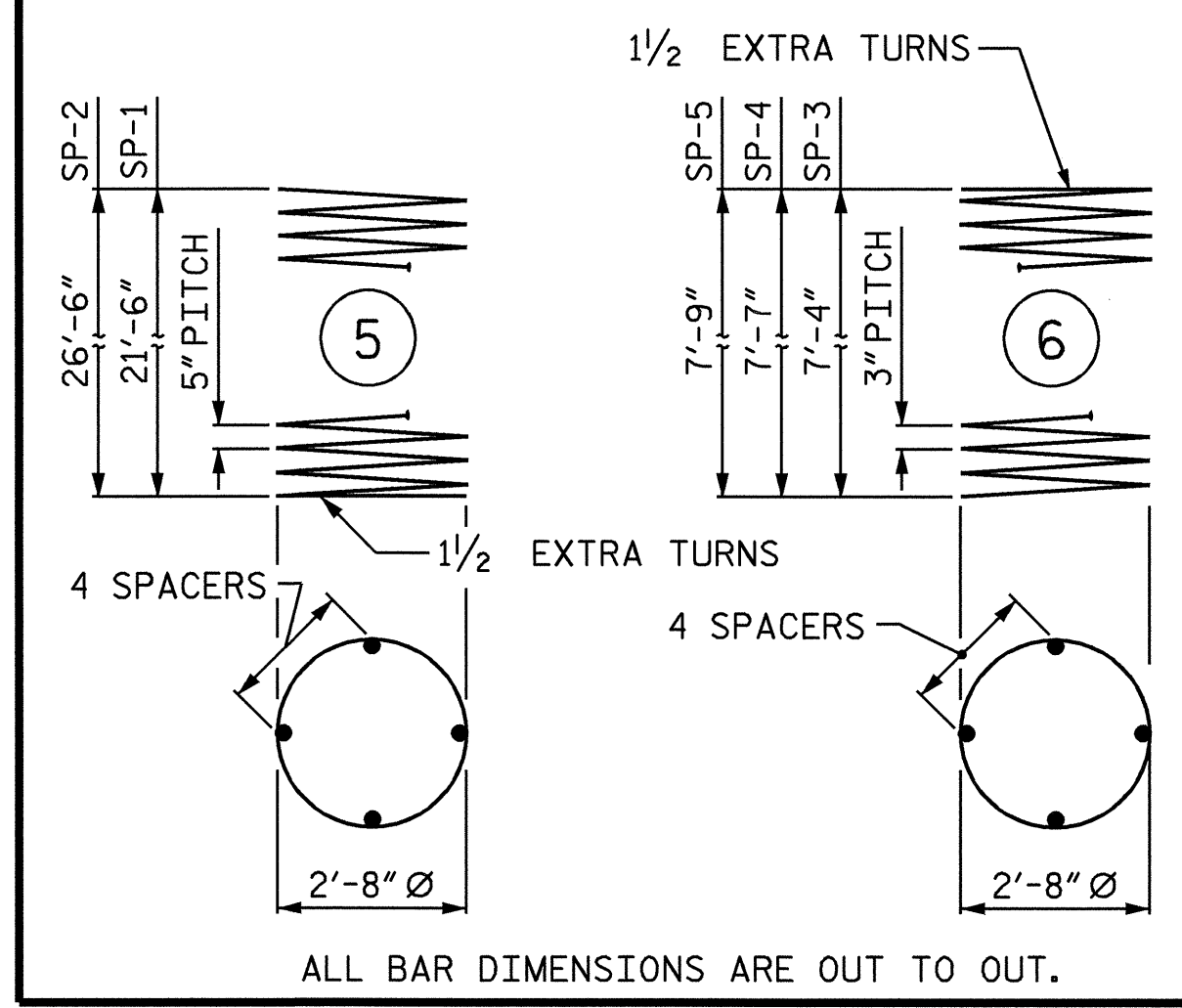
LATERAL GUIDE DETAIL
(LEFT LATERAL GUIDE SHOWN, RIGHT SIDE SIMILAR)



END ELEVATION



BAR TYPES



CONSTRUCTION JOINT DETAIL

BILL OF MATERIAL					
BENT No. 1					
BAR NO.	SIZE	TYPE	LENGTH	WEIGHT	
B1	10	1	47'-8"	2051	
B2	4	6	STR 45'-0"	270	
B3	2	4	STR 3'-4"	4	
B4	2	4	STR 3'-6"	5	
D1	52	6	STR 1'-6"	117	
M1	12	9	STR 29'-3"	1193	
M2	24	9	STR 34'-3"	2795	
S1	48	5	4	9'-6"	476
U1	6	4	3	6'-2"	25
U2	8	4	3	5'-6"	29
U3	2	4	3	4'-8"	6
U4	2	4	3	4'-4"	6
U5	2	4	3	3'-11"	5
U6	2	4	3	3'-6"	5
V1	12	9	2	10'-0"	408
V2	12	9	2	10'-3"	418
V3	12	9	2	10'-5"	425
REINFORCING STEEL			8,238 LBS.		
SP-1	1	*	5	444'-2"	463
SP-2	2	*	5	542'-10"	1132
SP-3	1	**	6	255'-10"	171
SP-4	1	**	6	264'-1"	176
SP-5	1	**	6	272'-4"	182
SPIRAL COLUMN REINFORCING STEEL			2,124 LBS.		
* THE SP-1 & SP-2 SPIRAL REINFORCING STEEL SHALL BE W31 OR D-31 COLD DRAWN WIRE OR #5 PLAIN OR DEFORMED BAR.					
** THE SP-3, SP-4, & SP-5 SPIRAL REINFORCING STEEL SHALL BE W20 OR D-20 COLD DRAWN WIRE OR #4 PLAIN OR DEFORMED BAR.					
CLASS A CONCRETE (C.Y.)					
POUR #2 (COLUMNS)			= 5.8		
POUR #3 (CAP)			= 18.8		
POUR #4 (LATERAL GUIDES)			= 0.2		
TOTAL			= 24.8 C.Y.		
DRILLED PIERS:					
DRILLED PIER CONCRETE (C.Y.)					
POUR #1 (DRILLED PIERS)			= 27.0 C.Y.		
3'-6" Ø DRILLED PIER IN SOIL			= 44.2 LIN. FT.		
3'-6" Ø DRILLED PIER NOT IN SOIL			= 31.8 LIN. FT.		
PERMANENT STEEL CASING FOR 3'-6" Ø DRILLED PIERS			= 37.6 LIN. FT.		
CSL TUBES			= 334.0 LIN. FT.		

PROJECT NO. B-3646
GUILFORD COUNTY
 STATION: 16+44.43 -L-

SHEET 2 OF 2

STATE OF NORTH CAROLINA
 DEPARTMENT OF TRANSPORTATION
 RALEIGH

SUBSTRUCTURE
 BENT No. 1

REVISIONS					TOTAL SHEETS
NO.	BY:	DATE:	NO.	BY:	DATE:
1			3		
2			4		

SHEET NO.
 S-15
 TOTAL SHEETS
 28



DRAWN BY : P.C. BREWER DATE : 3/16/04
 CHECKED BY : M. BRITT DATE : 4/1/04