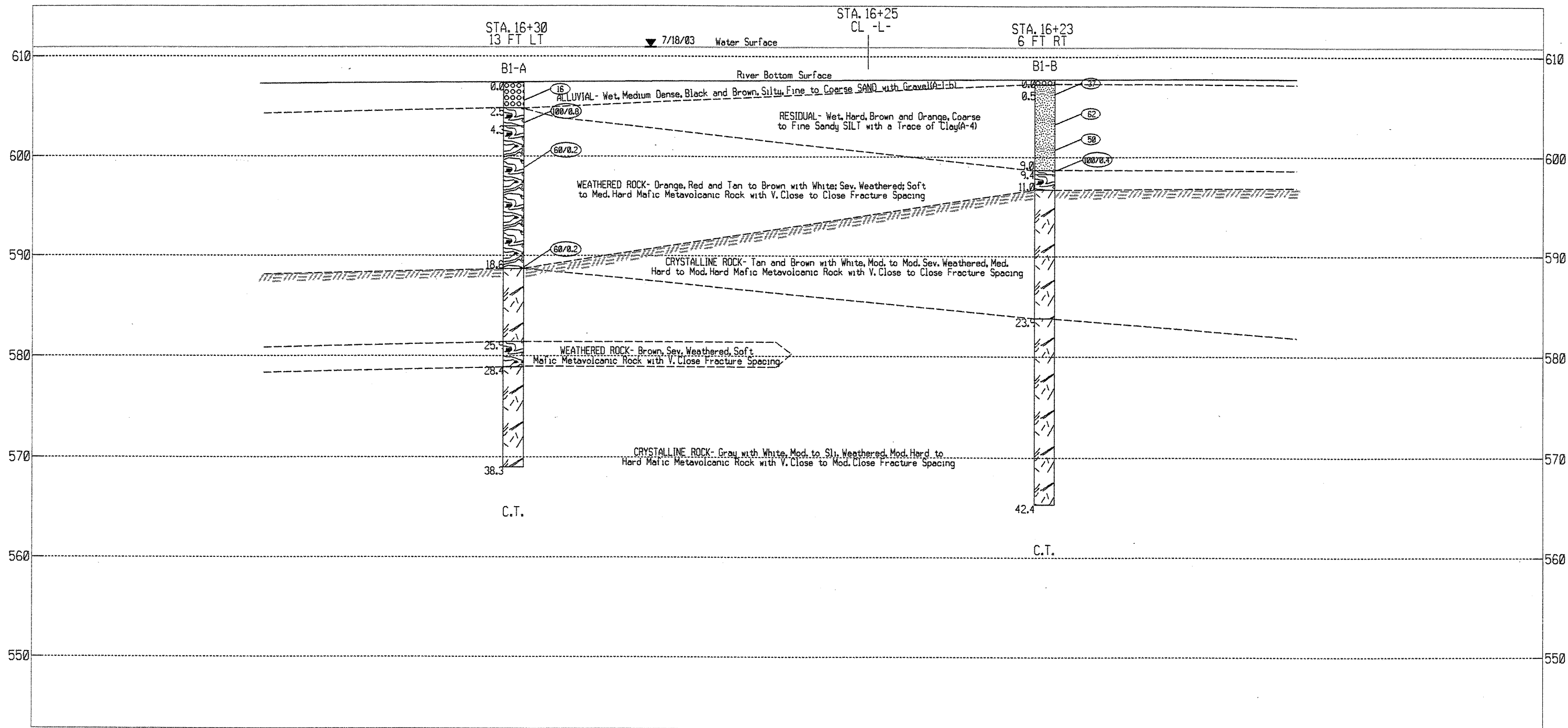


ELEV.



SCALE IN FEET

0 5 10

VERT. SCALE

0 2 4

HORZ. SCALE



ENGINEERING CONSULTANTS, INC.

CROSS SECTION DIAGRAM AT BENT-1

Bridge No. 185 Over the Haw River on SR 2712

Guilford County, North Carolina

Project No. 8.2495201

TIP No. B-3646

Federal No. BRZ-2712(2)

Vert. Scale 1" = 10'

Date 7/25/03

Horiz. Scale 1" = 4'

Drawn by DRK

Drawing No. 5