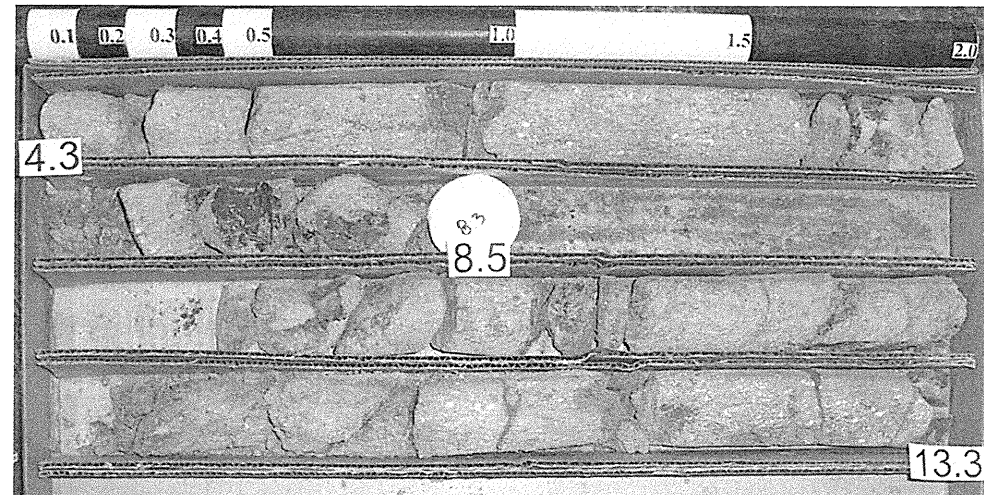


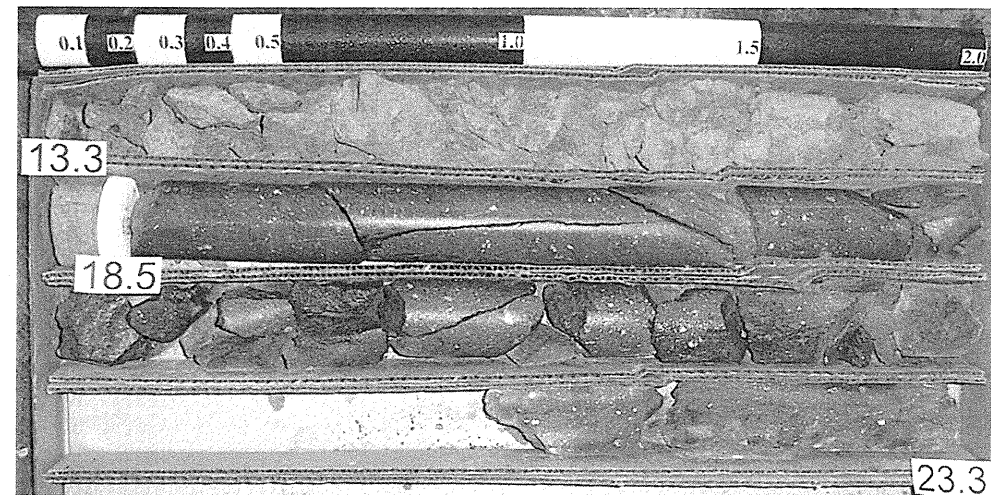
CORE PHOTOGRAPHS

Bridge No. 185 over the Haw River on SR 2712
NCDOT Project No. 8.2495201 (B-3646)

B1-A



Box 1 of 4



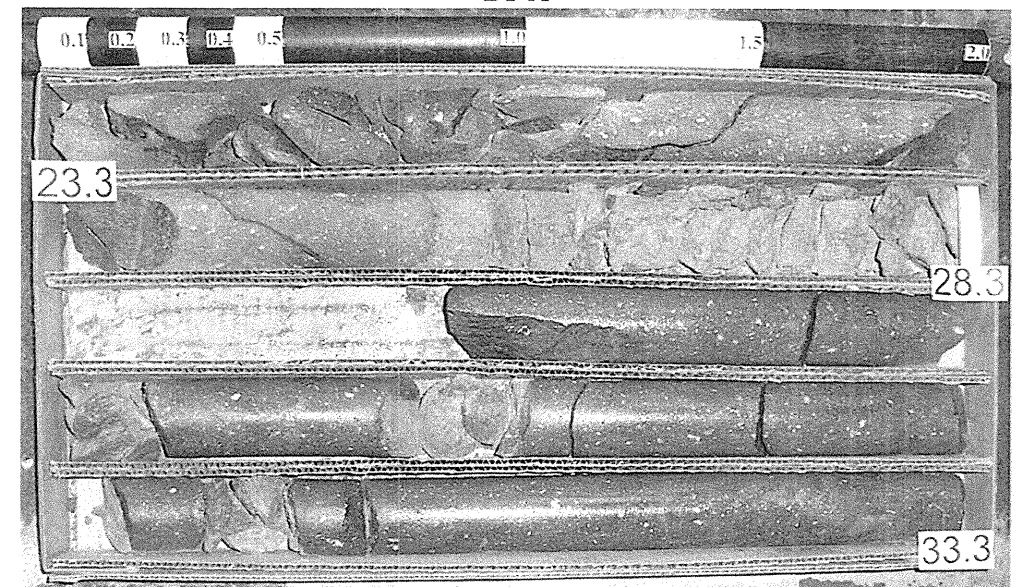
Box 2 of 4

(SCALE = 1:4)

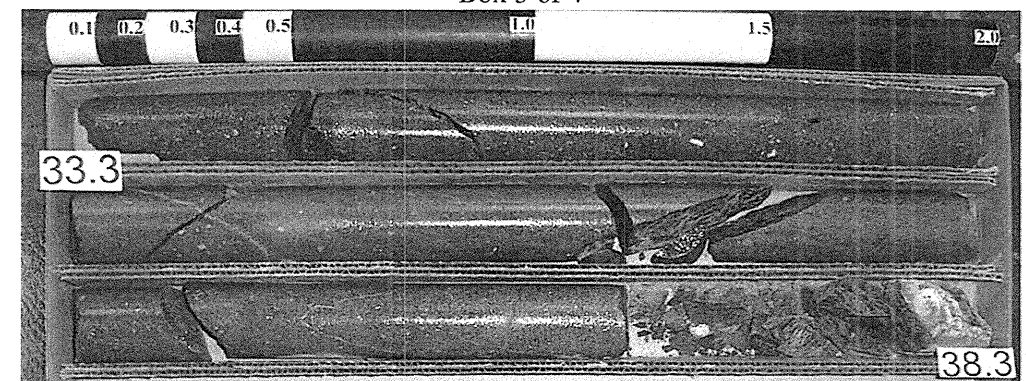
CORE PHOTOGRAPHS

Bridge No. 185 over the Haw River on SR 2712
NCDOT Project No. 8.2495201 (B-3646)

B1-A



Box 3 of 4



Box 4 of 4

(SCALE = 1:4)