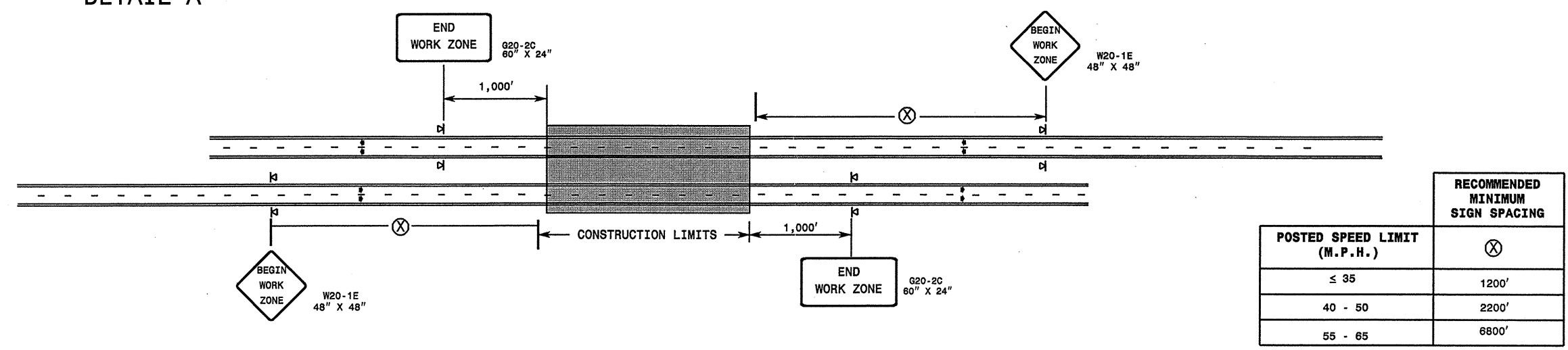
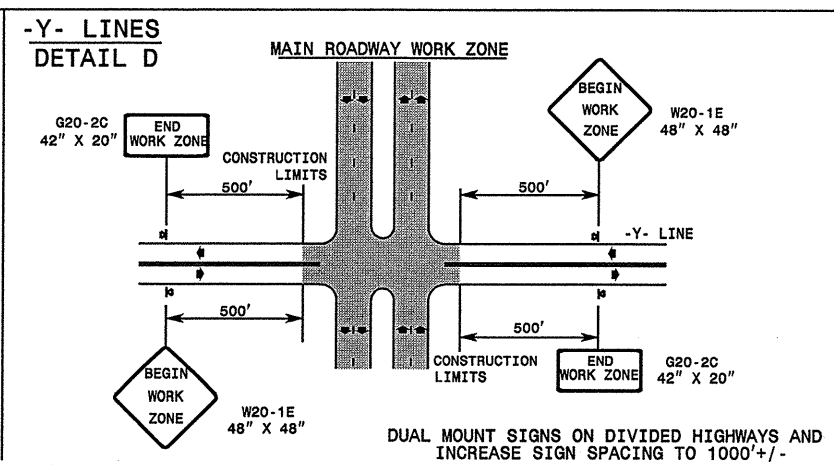
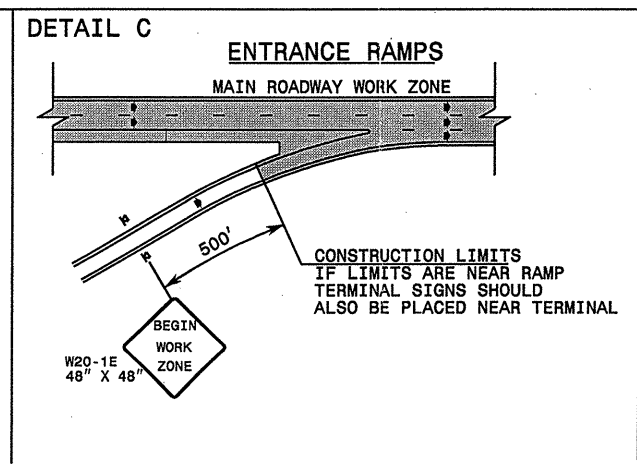
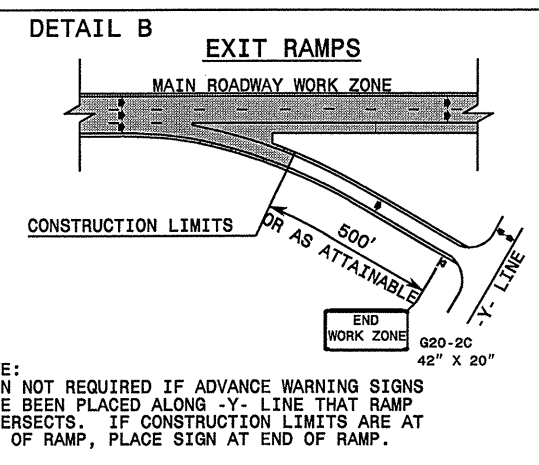


STATE OF NORTH CAROLINA
DEPT. OF TRANSPORTATION
DIVISION OF HIGHWAYS
RALEIGH, N.C.

DETAIL A



ROADWAYS INTERSECTING ALONG HIGHWAY WORK ZONE



GENERAL NOTES

- DO NOT INSTALL ADVANCE WARNING SIGNS MORE THAN 3 DAYS PRIOR TO BEGINNING OF WORK.
- ALL SIGN SPACING DIMENSIONS ARE APPROXIMATE, FIELD ADJUST AS NECESSARY OR AS DIRECTED.
- WHEN THERE ARE CONSTRUCTION LIMITS ON A DIVIDED -Y- LINE GREATER THAN 1 MILE IN LENGTH, USE THE SAME SIGNING AS FOR A MAIN ROADWAY WORK ZONE. (SEE DETAIL A)
- USE PORTABLE SIGNS.

LEGEND

| | |
|---|---------------------------|
| ⊠ | PORTABLE SIGN |
| → | DIRECTION OF TRAFFIC FLOW |

DETAIL DRAWING FOR
INTERSTATE AND FREEWAY
WORK ZONE SIGNS
(SHORT-DURATION LANE CLOSURES)

SHEET 1 OF 1

| | |
|-----------------------------|---|
| APPROVED: _____ DATE: _____ | DETAIL DRAWING FOR INTERSTATE AND FREEWAY WORK ZONE SIGNS |
| SEAL | |
| SCALE: NONE | REVISIONS |
| DATE: 09-08-2001 | |
| DWG. BY: MMM | |
| DESIGN BY: MMM | |
| REVIEWED BY: _____ | |