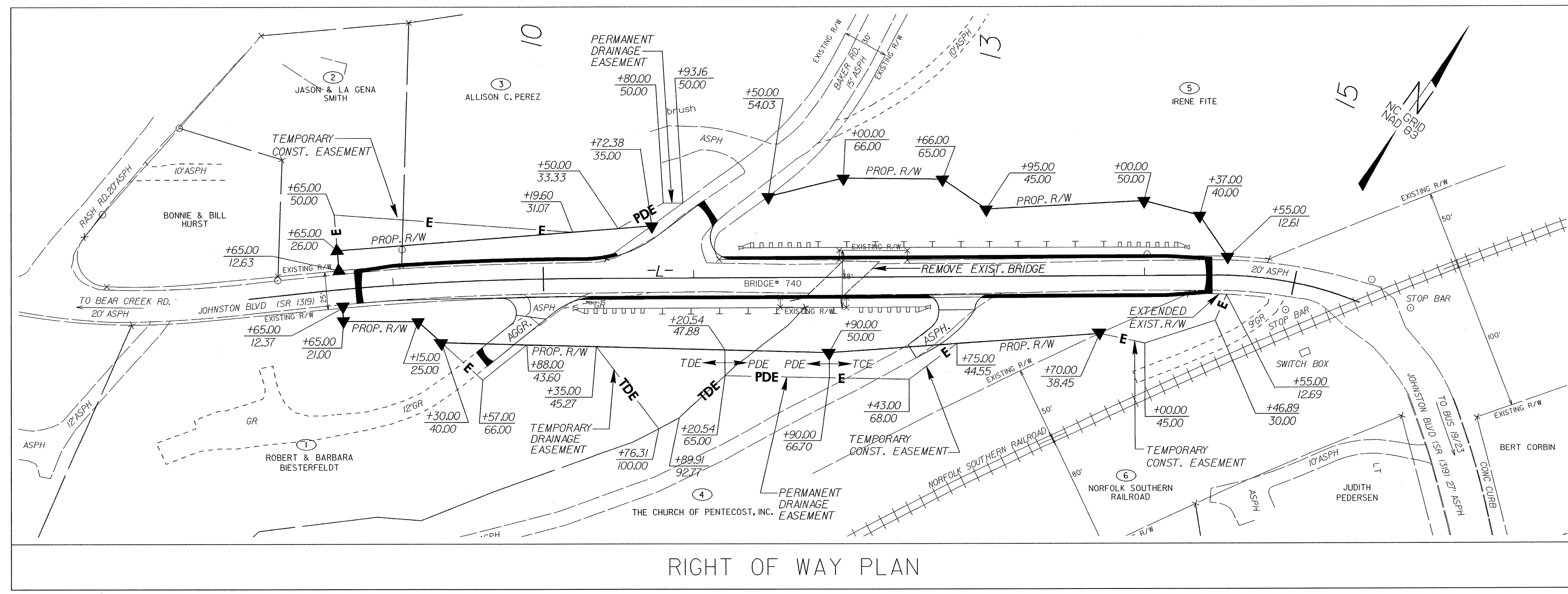
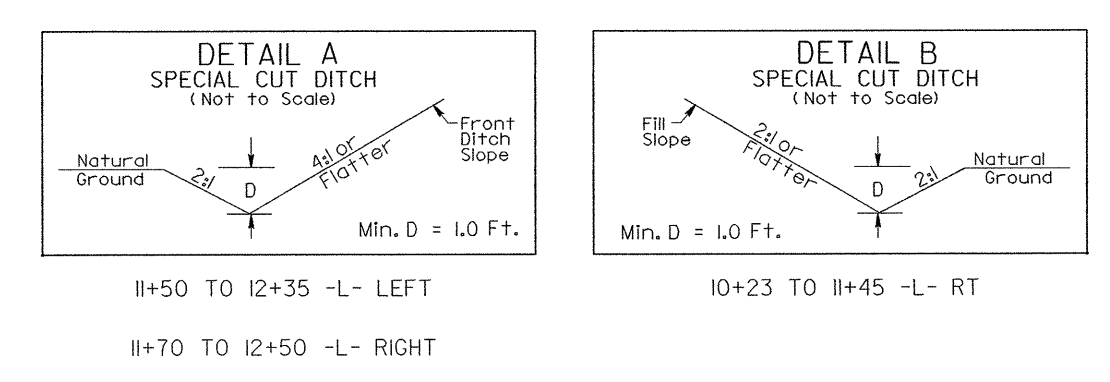
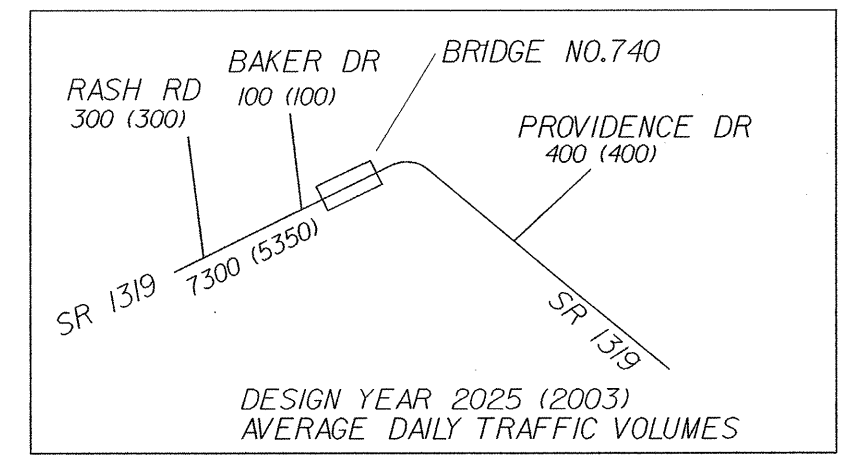


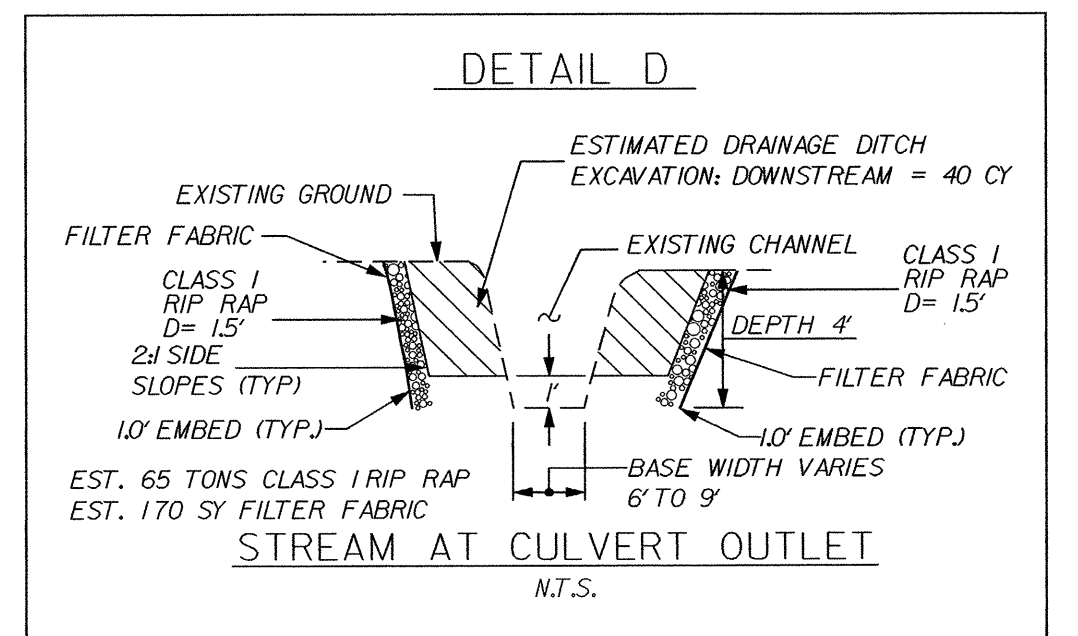
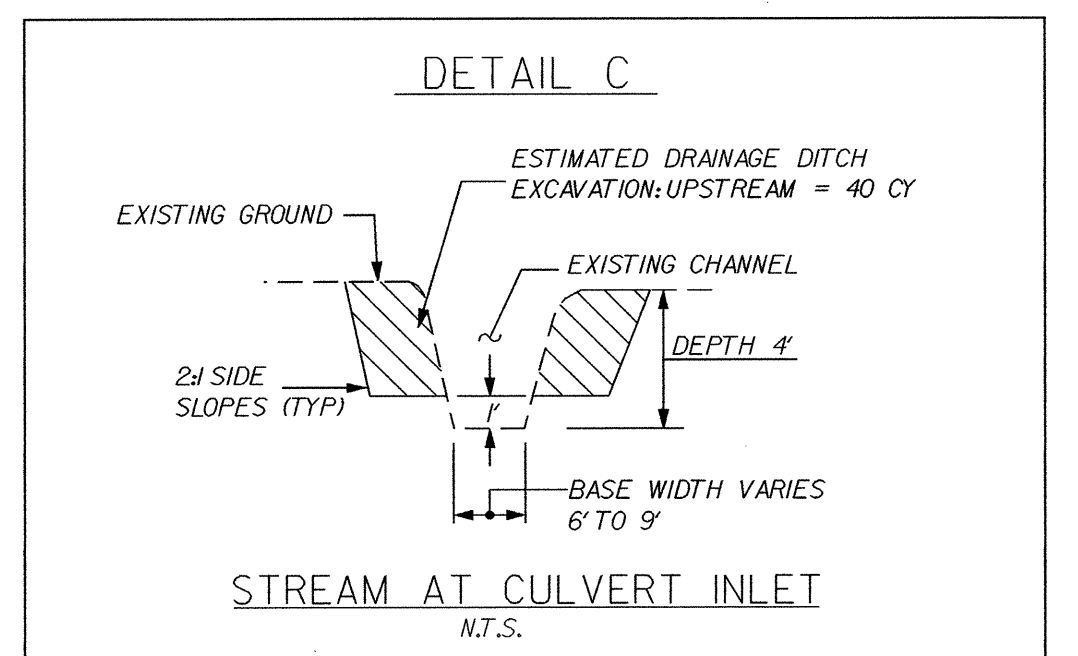
FOR TRI 9'x6' RCBC, SEE S-1 THRU S-

PI Sta 9+26.45
 $\Delta = 5' 47' 34.2''$ (RT)
 $D = 3' 06' 24.1''$
 $L = 186.46'$
 $T = 93.31'$
 $R = 1,844.27'$
 $SE = .03$

EXIST. CURVE
 PI Sta 14+96.75
 $\Delta = 22' 03' 37.8''$ (RT)
 $D = 22' 23' 52.0''$
 $L = 98.49'$
 $T = 49.86'$
 $R = 255.81'$



RIGHT OF WAY PLAN



** DESIGN EXCEPTION FOR DESIGN SPEED REQUIRED

REFERENCE:
FOR PROFILE, SEE SHEET 5