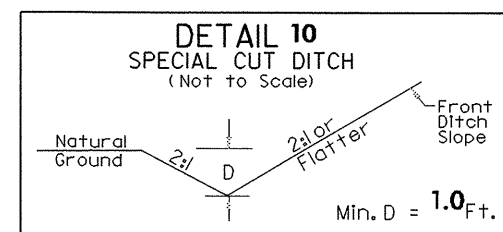


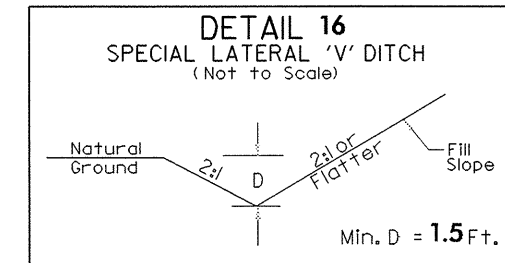
7/2/99

REVISIONS

| | |
|---|--|
| PROJECT REFERENCE NO. B-3310 | SHEET NO. 5 |
| RW SHEET NO. | |
| ROADWAY DESIGN ENGINEER NORTH CAROLINA PROFESSIONAL ENGINEER GARY R. LOWERY SEAL 28873 | HYDRAULICS ENGINEER NORTH CAROLINA PROFESSIONAL ENGINEER E. FISHER SEAL 12675 |

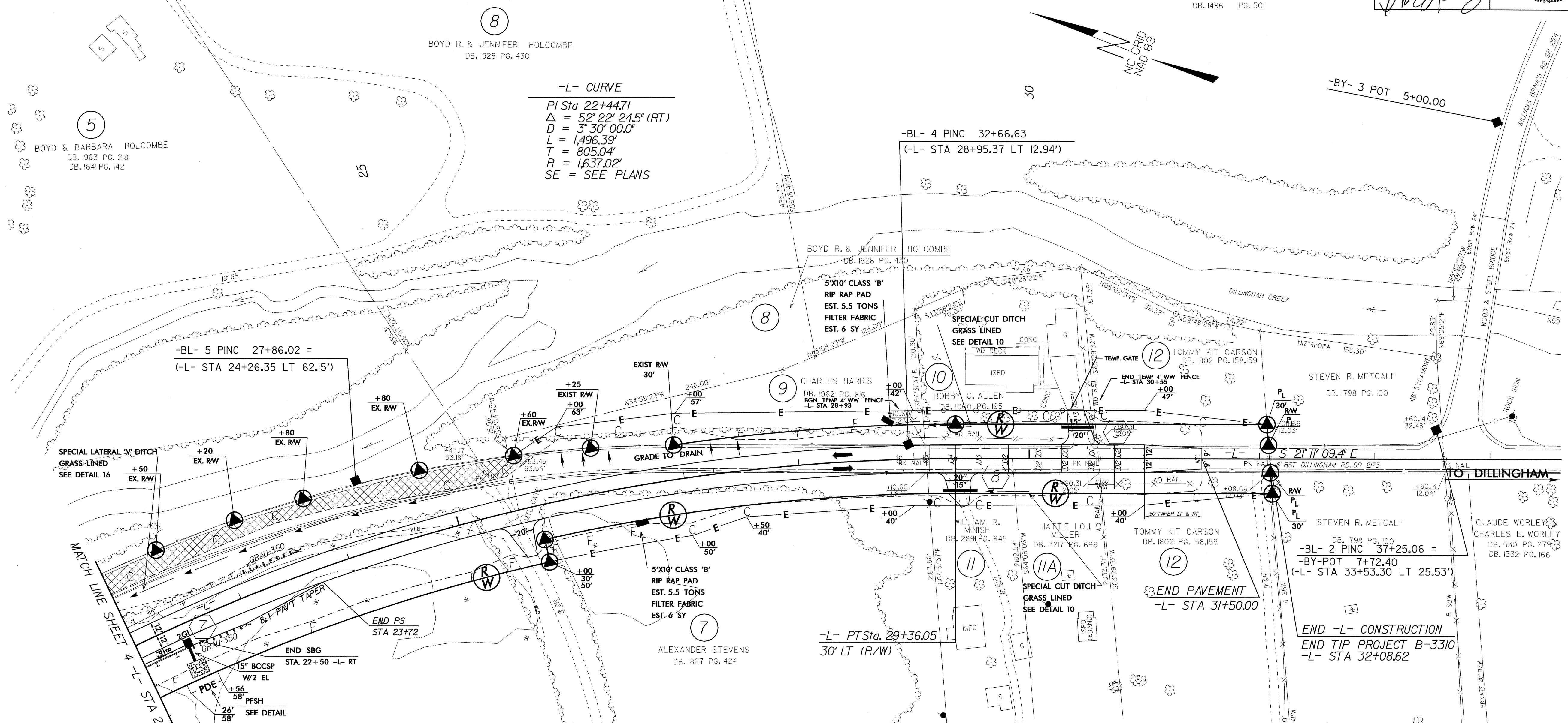


FROM STA. 28+83 TO 29+50 -L- LT
STA. 29+50 TO 31+00 -L- RT



FROM STA. 21+00 TO 25+00 -L- LT

CHARLES DAVID HARRIS
WANDA JOANNE EVANS &
BRENDA GAIL LEDFORD
DB. 1496 PG. 501



-L- CURVE
PI Sta 22+44.71
 $\Delta = 52^{\circ} 22' 24.5''$ (RT)
 $D = 3' 30' 00.0''$
 $L = 1,496.39'$
 $T = 805.04'$
 $R = 1,637.02'$
SE = SEE PLANS

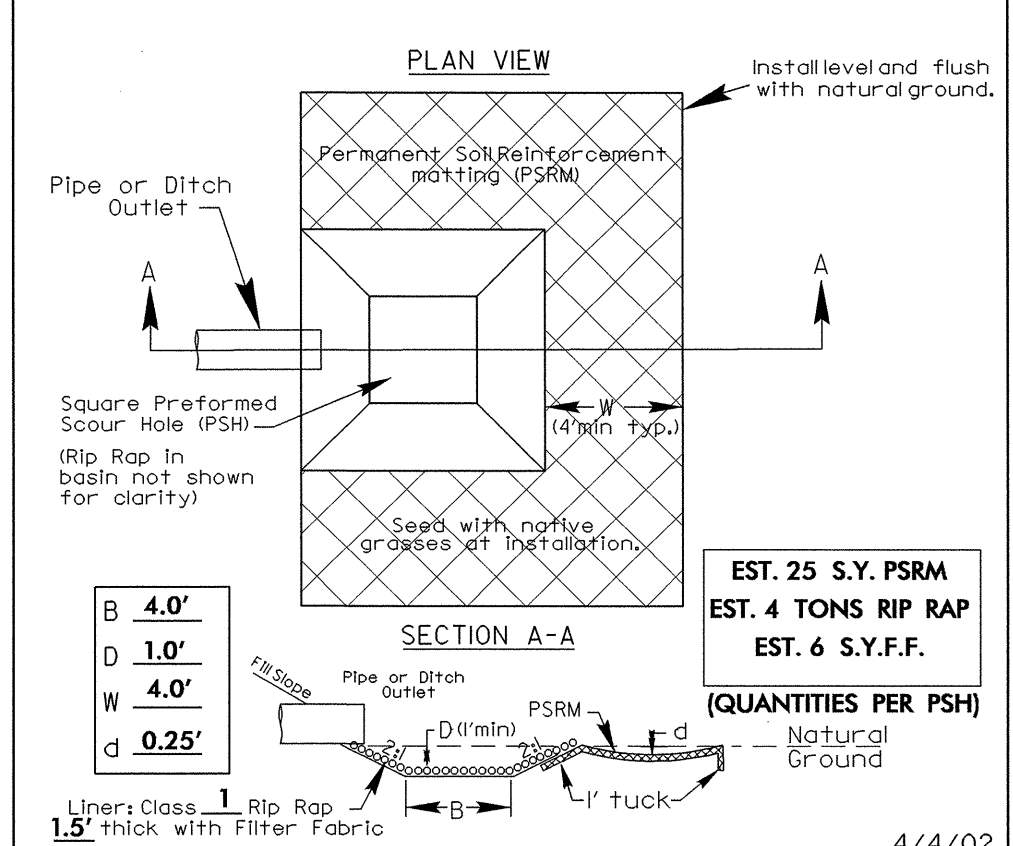
-BL- 5 PINC 27+86.02 =
(-L- STA 24+26.35 LT 62.15')

-BL- 4 PINC 32+66.63
(-L- STA 28+95.37 LT 12.94')

-BY- 3 POT 5+00.00

-BL- 2 PINC 37+25.06 =
(-L- STA 33+53.30 LT 25.53')

-L- STA. 22+42 RT
PREFORMED SCOUR HOLE



▨ PAVEMENT REMOVAL (OBLITERATE)
ALL DRIVE RADII ARE 10'
PS = PAVED SHOULDER
SBG = SHOULDER BERM GUTTER
FOR -L- PROFILE SEE SHEET 6
FOR TEMPORARY PAVEMENT WIDENING,
SEE TRAFFIC CONTROL PLANS, SHT TCP-1 TO TCP-10.
DESIGN EXCEPTION REQUIRED FOR HORIZONTAL STOPPING SIGHT DISTANCE.

21-MAY-2004 07:52
P:\Roadway\Proj\B3310\0505.psh
ACWest RH RD193405