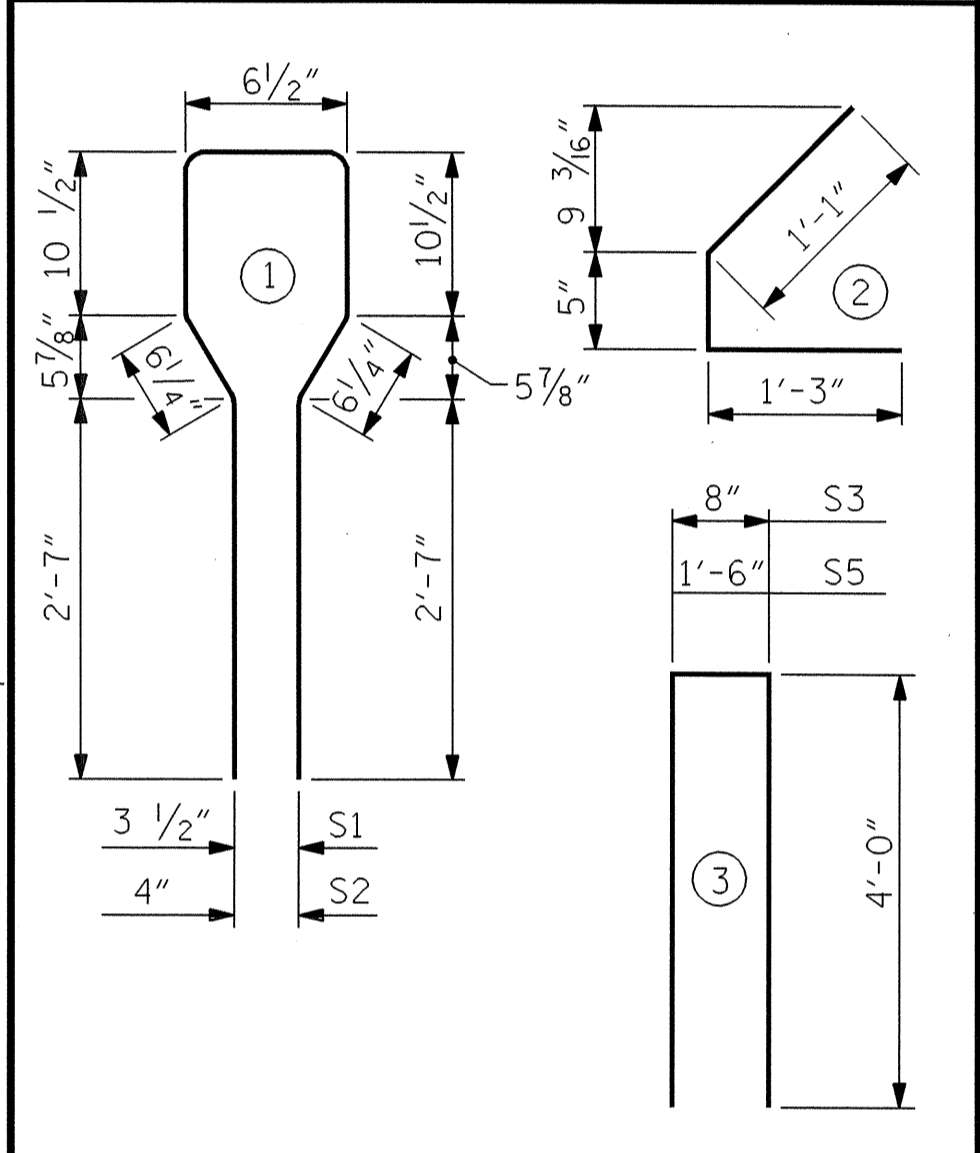


1/2" Ø L. R. GRADE 270 STRANDS		
AREA (SQUARE INCHES)	ULTIMATE STRENGTH (LBS. PER STRAND)	APPLIED PRESTRESS (LBS. PER STRAND)
0.153	41,300	30,980

REINFORCING STEEL FOR ONE GIRDER						
BAR	NUMBER	SIZE	TYPE	LENGTH	WEIGHT	
GDRS. A1 & A2	S1	52	#4	1	8'-6"	295
GDRS. A3 & A4	S1	50	#4	1	8'-6"	284
GDR. A5	S1	54	#4	1	8'-6"	307
	S2	12	#6	1	8'-6"	153
	S3	4	#4	3	8'-8"	23
GDRS. A1 THRU A4	S4	60	#4	2	2'-9"	110
GDRS. A5	S4	64	#4	2	2'-9"	118
	S5	1	#4	3	9'-6"	6
	*S6	4	#5	STR	3'-8"	15

* NOTE: S6 BARS SHALL BE BENT BEFORE SHIPMENT. HEAT BENDING SHALL NOT BE ALLOWED.

BAR TYPES
 ALL BAR DIMENSIONS ARE OUT-TO-OUT



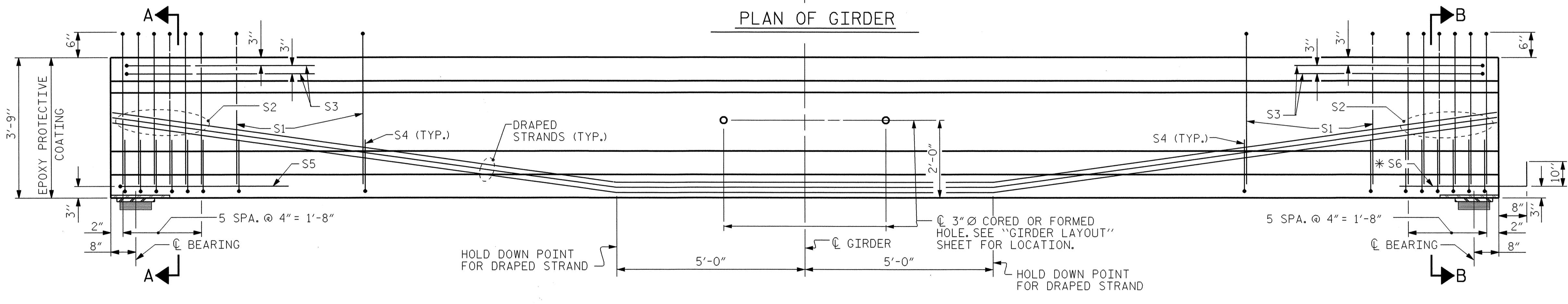
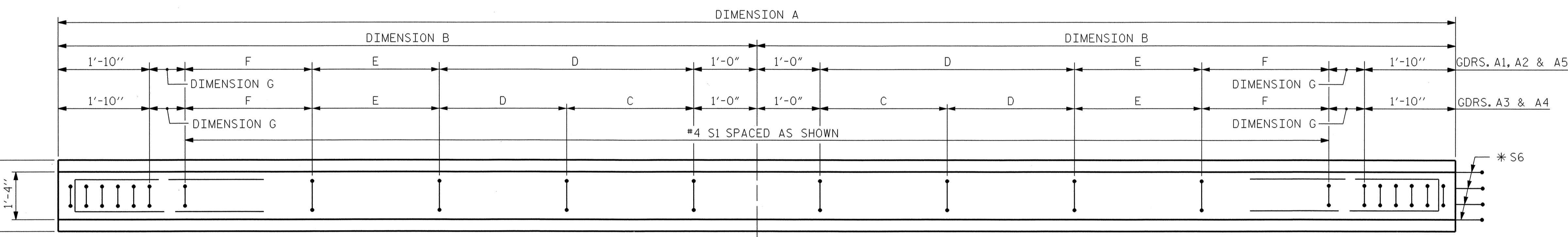
QUANTITIES FOR ONE GIRDER			
	REINFORCING STEEL LB.	6200 PSI CONCRETE C.Y.	1/2" Ø L.R. STRANDS No.
GIRDER A1	602	9.6	24
GIRDER A2	602	9.6	24
GIRDER A3	591	9.6	24
GIRDER A4	591	9.7	24
GIRDER A5	622	9.7	24

PROJECT NO. B-3310
 BUNCOMBE COUNTY
 STATION: 19+80.00 -L-

SHEET 1 OF 3

STATE OF NORTH CAROLINA
 DEPARTMENT OF TRANSPORTATION
 RALEIGH
 AASHTO TYPE III
 PRESTRESSED CONCRETE GIRDER
 CONTINUOUS FOR LIVE LOAD
 _____ SPAN A _____

REVISIONS						SHEET NO.
NO.	BY:	DATE:	NO.	BY:	DATE:	
1			3			S-10
2			4			TOTAL SHEETS 32



ELEVATION OF GIRDER
 EACH EXTERIOR GIRDER HAS ONLY ONE 3" Ø HOLE. SEE GIRDER LAYOUT SHEET FOR LOCATION.

GIRDER DETAILS							
	DIMENSION A	DIMENSION B	C	D	E	F	DIMENSION G
GIRDER A1	66'-6 1/8"	33'-3 1/16"		6 SPA. @ 1'-9"	11 SPA. @ 1'-5"	8 SPA. @ 6"	4 1/16"
GIRDER A2	66'-9 1/8"	33'-4 9/16"		6 SPA. @ 1'-9"	11 SPA. @ 1'-5"	8 SPA. @ 6"	5 1/16"
GIRDER A3	67'-0"	33'-6"	2 SPA. @ 1'-11"	8 SPA. @ 1'-9"	6 SPA. @ 1'-5"	8 SPA. @ 6"	4"
GIRDER A4	67'-3"	33'-7 1/2"	2 SPA. @ 1'-11"	8 SPA. @ 1'-9"	6 SPA. @ 1'-5"	8 SPA. @ 6"	5 1/2"
GIRDER A5	67'-6 1/8"	33'-9 1/16"		6 SPA. @ 1'-9"	11 SPA. @ 1'-5"	9 SPA. @ 6"	4 1/16"

GIRDERS REQUIRED	
NUMBER	LENGTH
GIRDER A1	66'-6 1/8"
GIRDER A2	66'-9 1/8"
GIRDER A3	67'-0"
GIRDER A4	67'-3"
GIRDER A5	67'-6 1/8"
TOTAL LENGTH	335'-0 3/8"



ASSEMBLED BY: A.R. CHESNON DATE: 7-03
 CHECKED BY: S.H. SOCKWELL DATE: 11-03
 DRAWN BY: RB 2/97 REV. 8/16/99 ARB/LES
 CHECKED BY: VP 2/97
 CADD STANDARD