

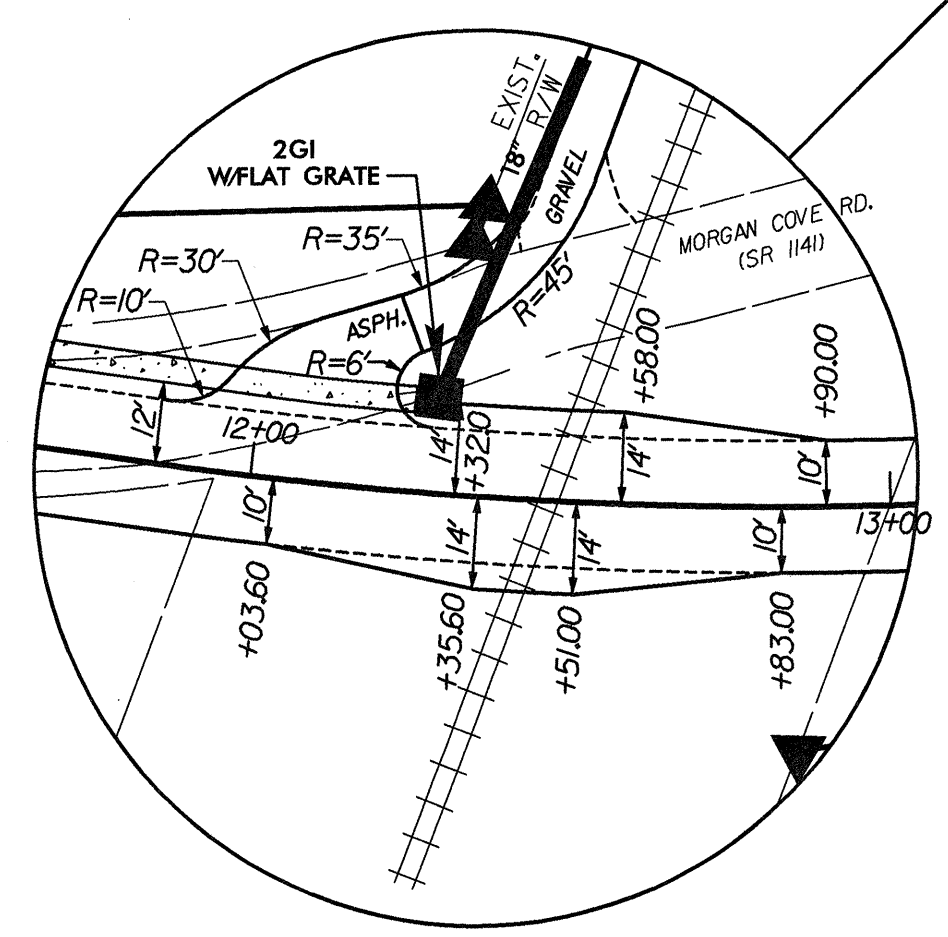
BEGIN PROJECT
 POT Sta. 10+80.00 -L-

END PROJECT
 POT Sta. 16+31.62 -L-

BL-1
 BL - POT 5+00.00 =
 -L- POT 10+60.69
 (12.45 LT)

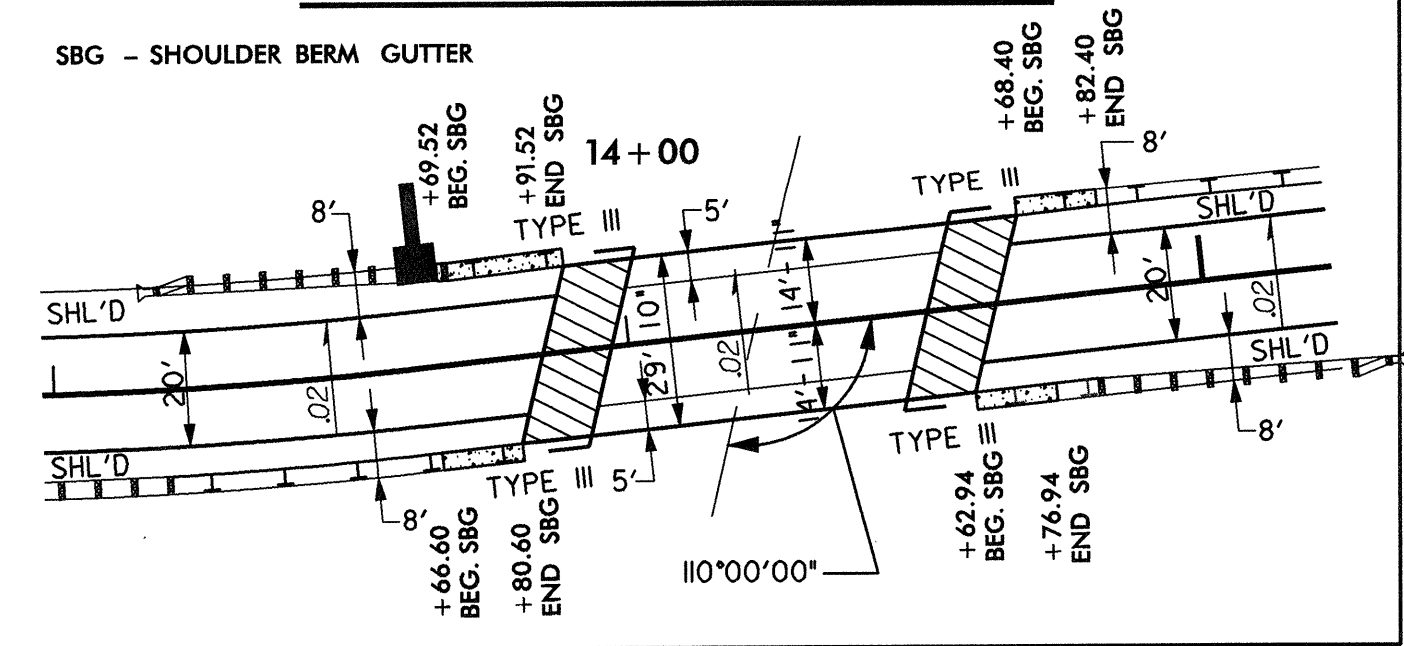
PI Sta 12+74.31
 $\Delta = 14' 15" 48.0" (LT)$
 $D = 8' 00" 00.0"$
 $L = 178.29'$
 $T = 89.61'$
 $R = 716.20'$
 $SE = .02$
 $Ds = 30 MPH$

PI Sta 15+83.98
 $\Delta = 9' 05" 58.7" (RT)$
 $D = 16' 22" 12.8"$
 $L = 55.59'$
 $T = 27.85'$
 $R = 350.00'$
 $SE = .02$
 $Ds = 30 MPH$



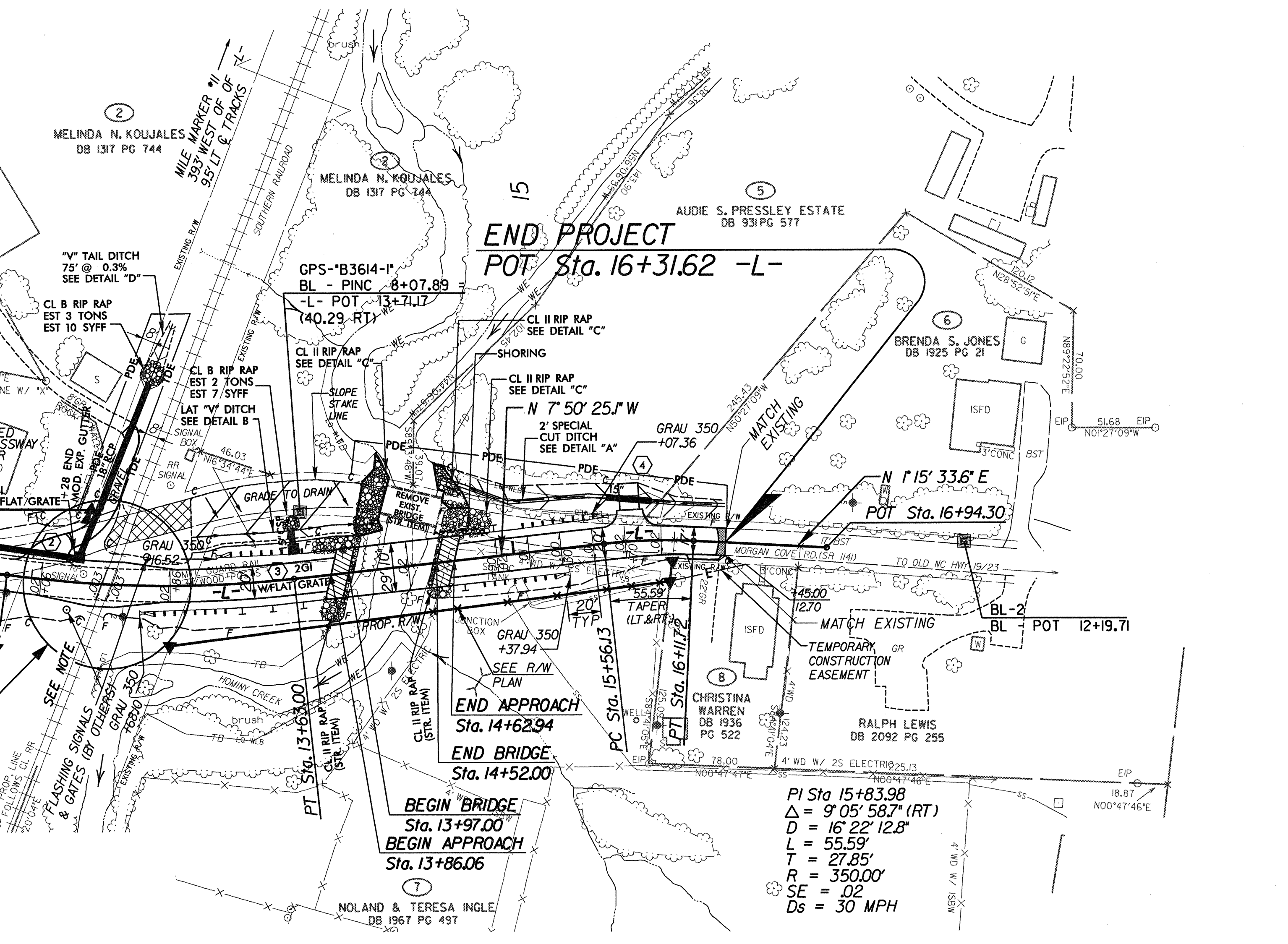
INSERT
 NOT TO SCALE

BRIDGE SKETCH

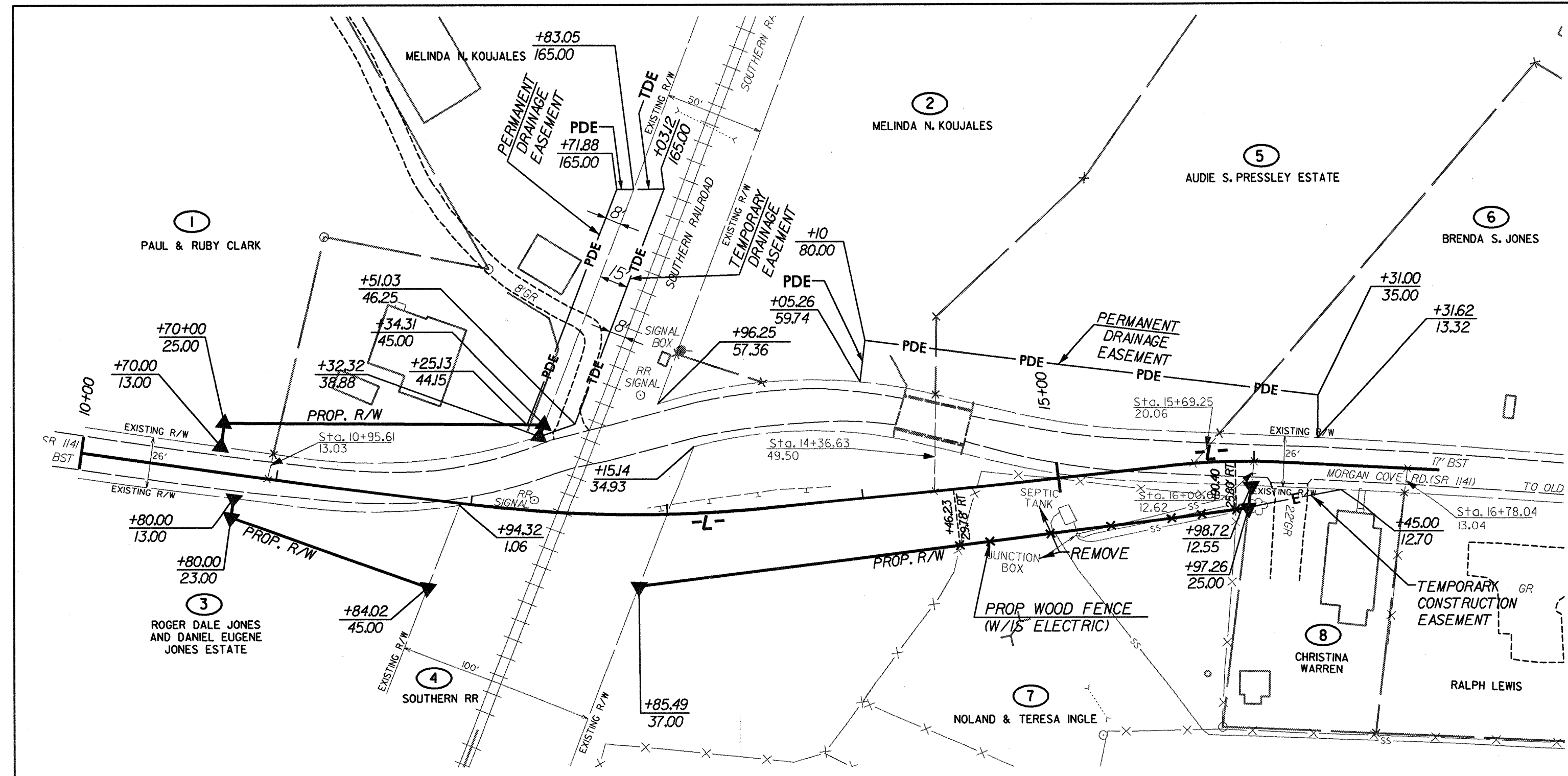


FOR STRUCTURE PLANS, SEE S-1 THRU S-

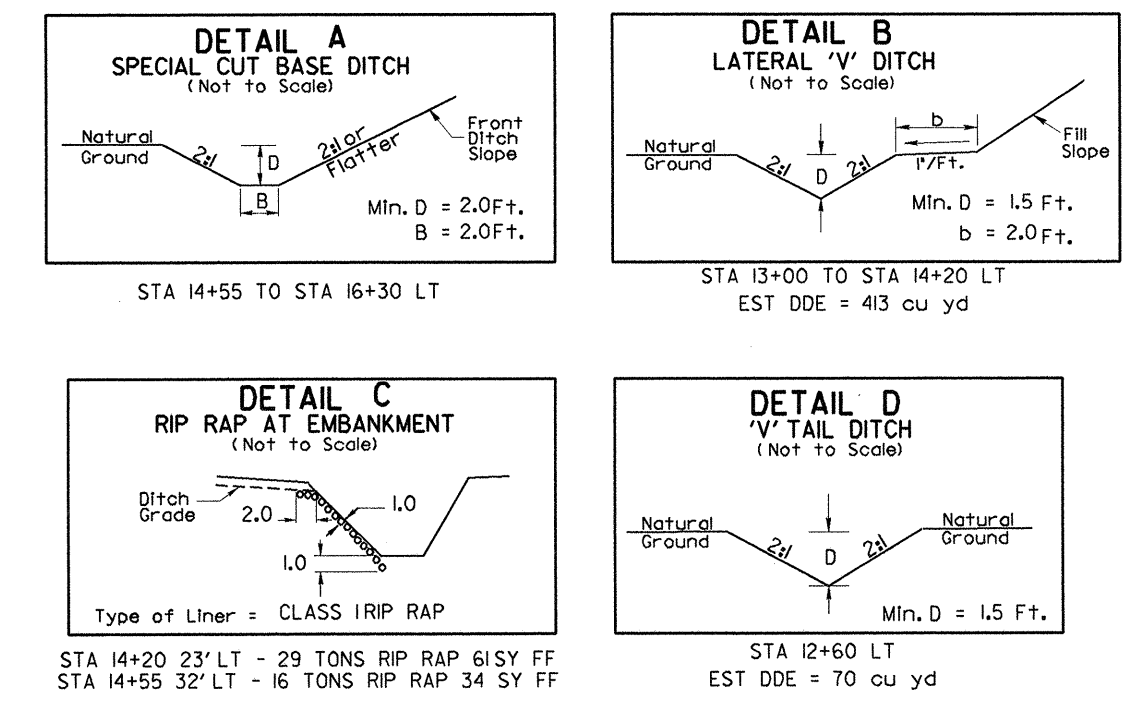
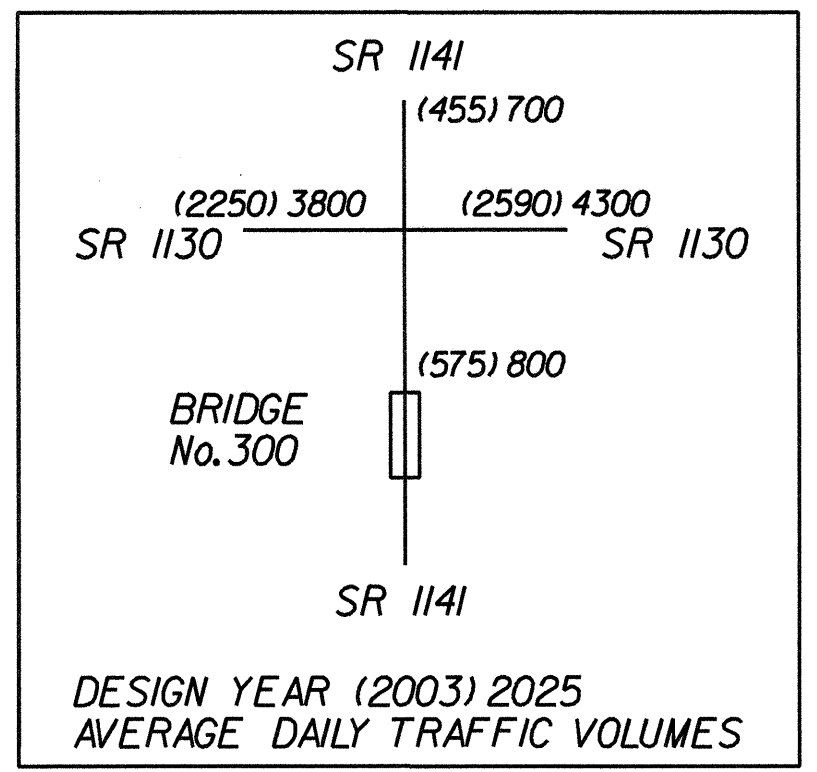
**** DESIGN EXCEPTION FOR DESIGN SPEED REQUIRED**



NOTE: ROADWAY GRADE TO MATCH TOP OF RAIL



RIGHT OF WAY PLAN



REFERENCES:
 FOR -L- PROFILE, SEE SHEET 5
 FOR PAVEMENT SCHEDULE, SEE SHEET 2

LEGEND

- BRIDGE APPROACH SLAB
- OBLITERATE, REMOVE AND GRADE TO DRAIN