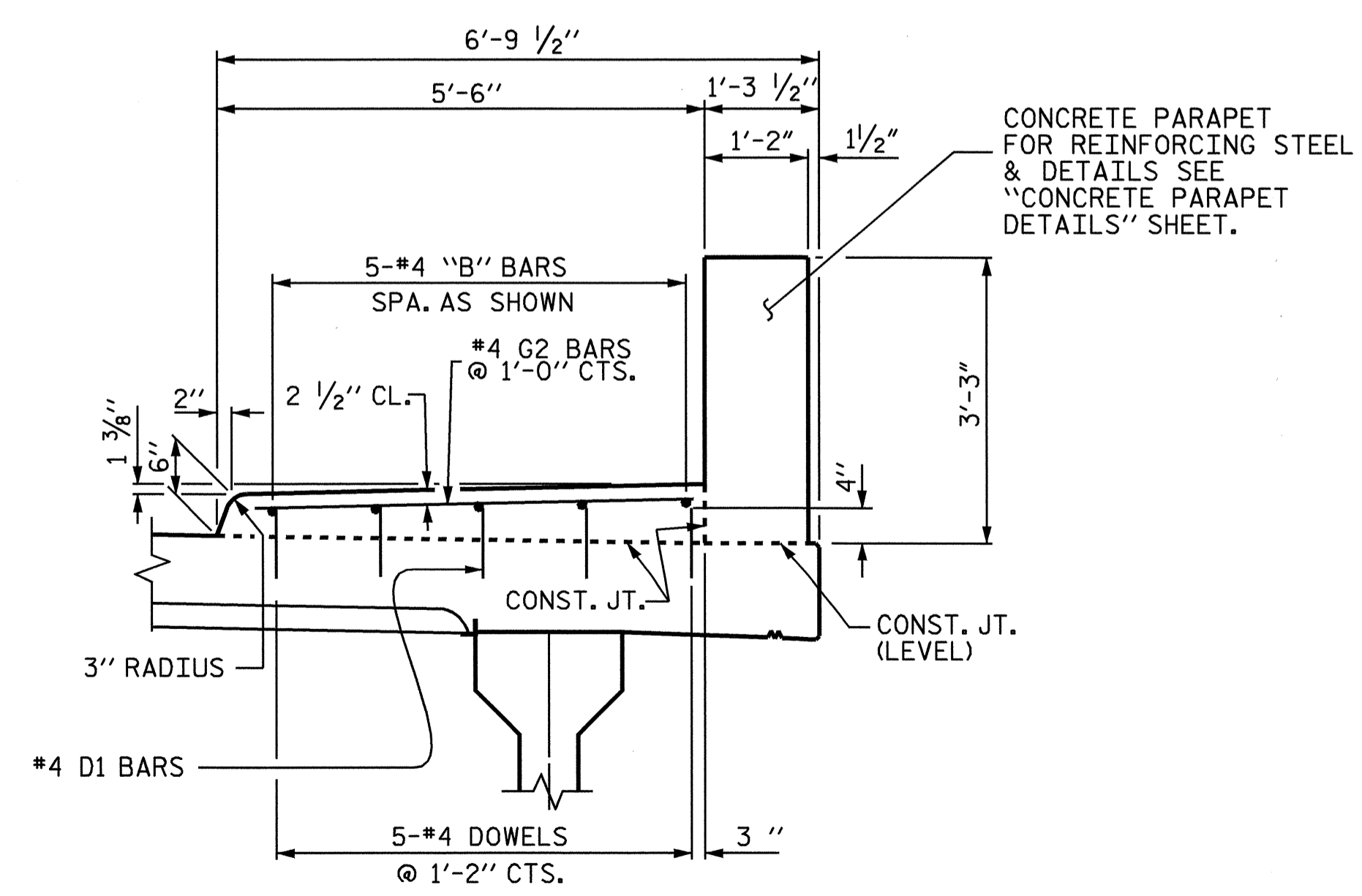


PLAN OF SIDEWALK

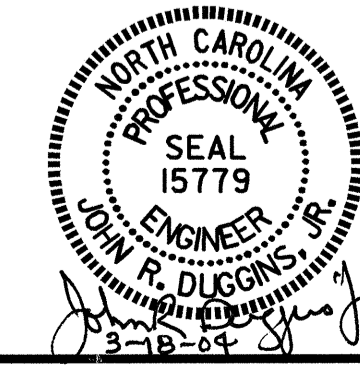


SECTION THRU SIDEWALK

- NOTES:**
- THE JOINT IN THE DECK AT END BENTS SHALL BE SAWED PRIOR TO THE CASTING OF THE SIDEWALKS
 - * THESE DOWELS ARE TO BE PLACED AFTER SAWING OF THE JOINT AT END BENTS. THE HOLES SHALL BE DRILLED AND THE DOWELS GROUTED IN PLACE.
 - THE DOWELS (EXCEPT AS NOTED ABOVE) MAY BE PUSHED INTO GREEN CONCRETE AFTER SPAN HAS BEEN SCREEDED OFF.
 - SIDEWALK SHALL NOT BE CAST UNTIL ALL SLAB CONCRETE HAS BEEN CAST AND HAS REACHED A MINIMUM COMPRESSIVE STRENGTH OF 3000 psi.
 - ALL REINFORCING STEEL IN SIDEWALKS SHALL BE EPOXY COATED.
 - FOR PARAPET AND END POST DETAILS AND REINFORCING STEEL SEE "CONCRETE PARAPET DETAILS" SHEET.
 - FOR SIDEWALK COVER PLATE DETAILS AT END BENTS, SEE "BRIDGE APPROACH SLAB" SHEETS.
 - FOR SIDEWALK REINFORCING STEEL AND CONCRETE QUANTITIES, SEE "SUPERSTRUCTURE BILL OF MATERIAL" SHEET.

PROJECT NO. B-3607
ASHE COUNTY
 STATION: 10+87.50 -L-

STATE OF NORTH CAROLINA
 DEPARTMENT OF TRANSPORTATION
 RALEIGH
 SUPERSTRUCTURE
 SIDEWALK DETAILS



REVISIONS						SHEET NO.
NO.	BY:	DATE:	NO.	BY:	DATE:	S-9
1			3			TOTAL SHEETS
2			4			32

DRAWN BY: D. HODGE DATE: 10/03
 CHECKED BY: J. LAMBERT DATE: 11/03