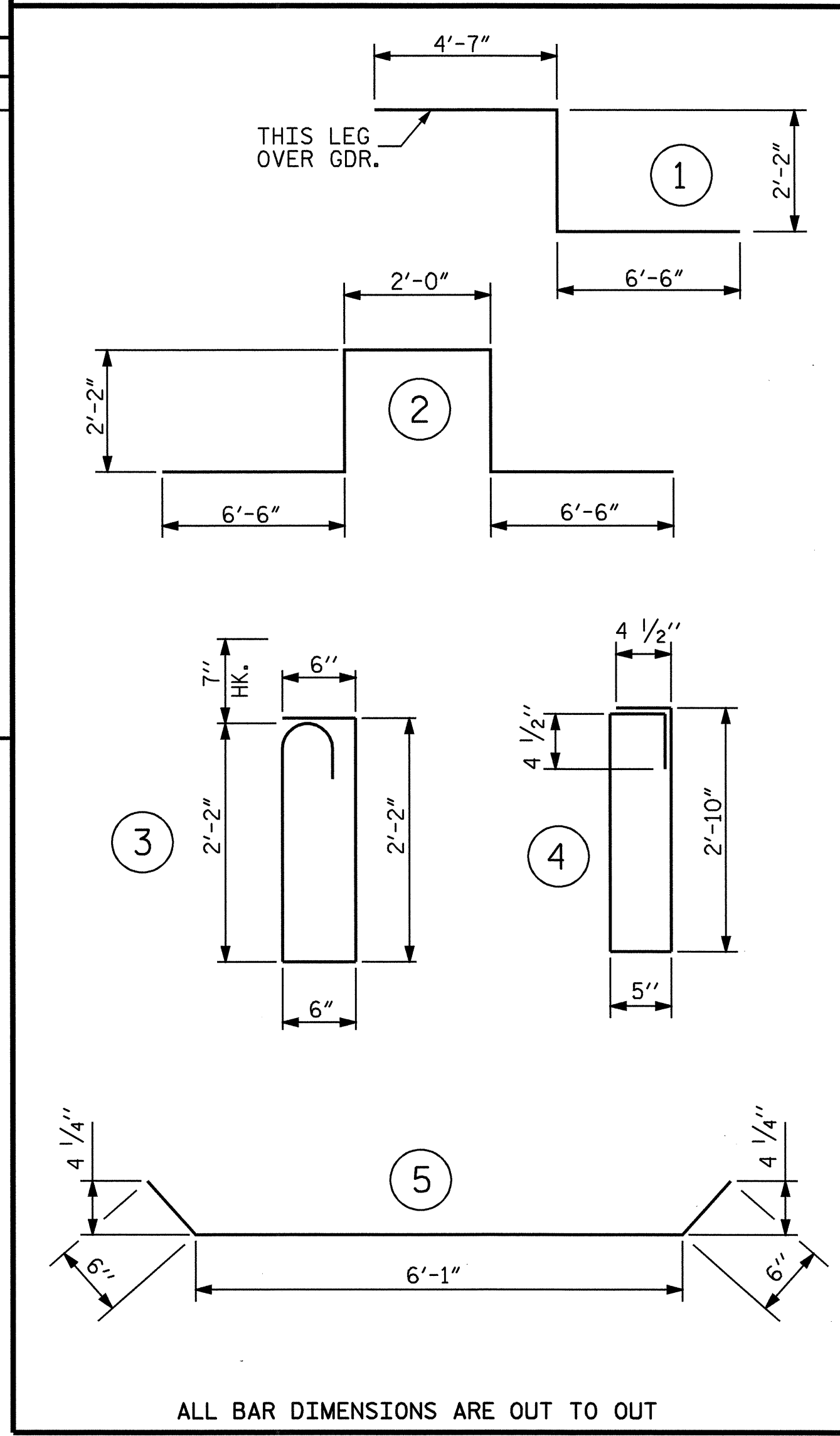


REINFORCING BAR SCHEDULE

SPAN A					
BAR NO.	SIZE	TYPE	LENGTH	WEIGHT	
* A1	142	5	STR	41'- 3"	6109
A2	142	5	STR	41'- 3"	6109
* B1	84	4	STR	28'-10"	1618
B2	88	5	STR	42'- 4"	3886
* B3	30	4	STR	28'-10"	578
* D1	140	4	STR	1'- 0"	94
* G1	2	5	STR	41'- 3"	86
* G2	166	4	STR	5'- 1"	564
* K1	8	8	1	13'- 3"	283
* K2	12	8	2	19'- 4"	619
K3	8	5	5	7'- 1"	59
K4	8	5	STR	6'-10"	57
* S1	56	5	3	5'-11"	346
S2	28	4	4	7'- 3"	136
REINFORCING STEEL				10247	LBS.
EPOXY COATED REINFORCING STEEL				10297	LBS.
* THESE BARS ARE EPOXY COATED					

BAR TYPES



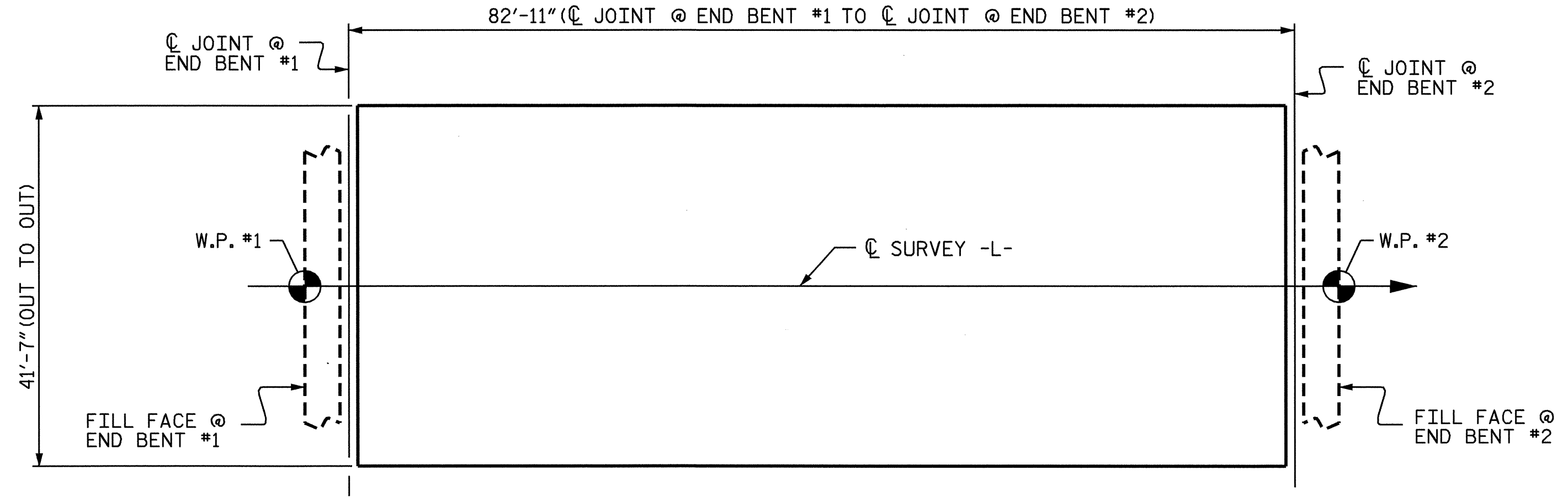
SUPERSTRUCTURE REINFORCING STEEL LENGTHS ARE BASED ON THE FOLLOWING MINIMUM SPLICE LENGTHS

BAR SIZE	SUPERSTRUCTURE EXCEPT APPROACH SLABS, PARAPET, AND BARRIER RAIL		APPROACH SLABS		PARAPET AND BARRIER RAIL
	EPOXY COATED	UNCOATED	EPOXY COATED	UNCOATED	
#4	2'-0"	1'-9"	2'-0"	1'-9"	2'-9"
#5	2'-6"	2'-2"	2'-6"	2'-2"	3'-5"
#6	3'-0"	2'-7"	3'-10"	2'-7"	4'-4"
#7	5'-3"	3'-6"			
#8	6'-10"	4'-7"			

— SUPERSTRUCTURE BILL OF MATERIAL —

	CLASS AA CONCRETE ( CU. YDS. )	REINFORCING STEEL ( LBS. )	EPOXY COATED REINFORCING STEEL ( LBS. )
SPAN "A"	113.3	10247	10297
SIDEWALK	18.5	***	***
TOTALS**	131.8	10247	10297

\*\*QUANTITIES FOR PARAPET ARE NOT INCLUDED  
\*\*\*SIDEWALK REINFORCING STEEL IS INCLUDED IN SPAN TOTALS.



LAYOUT FOR COMPUTING AREA REINFORCED CONCRETE DECK SLAB ( SQ. FT. = 3,448 )

GROOVING BRIDGE FLOORS  
BRIDGE DECK 2060 SQ.FT.

PROJECT NO. B-3607  
ASHE COUNTY  
STATION: 10+87.50 -L-

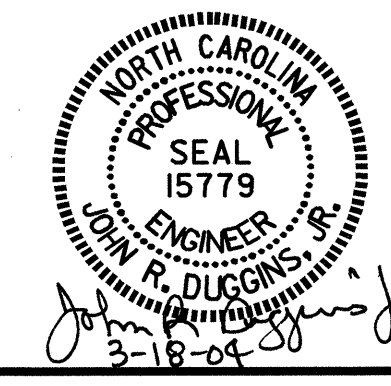
STATE OF NORTH CAROLINA  
DEPARTMENT OF TRANSPORTATION  
RALEIGH

STANDARD  
SUPERSTRUCTURE  
BILL OF MATERIAL

OCTOBER 1987

REVISIONS			SHEET NO.		
NO.	BY:	DATE:	NO.	BY:	DATE:
1			3		
2			4		

TOTAL SHEETS 32



ASSEMBLED BY : D. HODGE DATE : 10/03  
CHECKED BY : J. LAMBERT DATE : 11/03  
DRAWN BY : JMB 5/87 REV. 6/1/94 EEM/GRP  
CHECKED BY : SJD 9/87 REV. 8/16/99 RWW/LES