



2701 ROWLAND ROAD
 RALEIGH, NORTH CAROLINA 27615
 Phone (919) 871-0800 Fax (919) 871-0803

N.C.D.O.T. GEOTECHNICAL UNIT
 BORING LOG

SHEET 1 OF 1

PROJECT NO. 8.2711901	ID. B-3607	COUNTY ASHE	GEOLOGIST C. BRUINSMA
SITE DESCRIPTION BRIDGE #503 ON SR 1674 OVER BUFFALO CREEK			GROUND WATER (ft)
BORING NO. EB2-A	BORING LOCATION 11+30	OFFSET 20' LT.	ALIGNMENT -L-
COLLAR ELEV. 2678.6 ft	NORTHING 996,928.2	EASTING 1,261,088.1	0 HR. 7.4
TOTAL DEPTH 20.90 ft	DRILL MACHINE DIEDRICH D50	DRILL METHOD HOLLOW STEM AUGER	24 HR. CAVE AT 10.0'
DATE STARTED 5-9-03	COMPLETED 5-9-03	SURFACE WATER DEPTH N/A	
HAMMER TYPE AUTO			

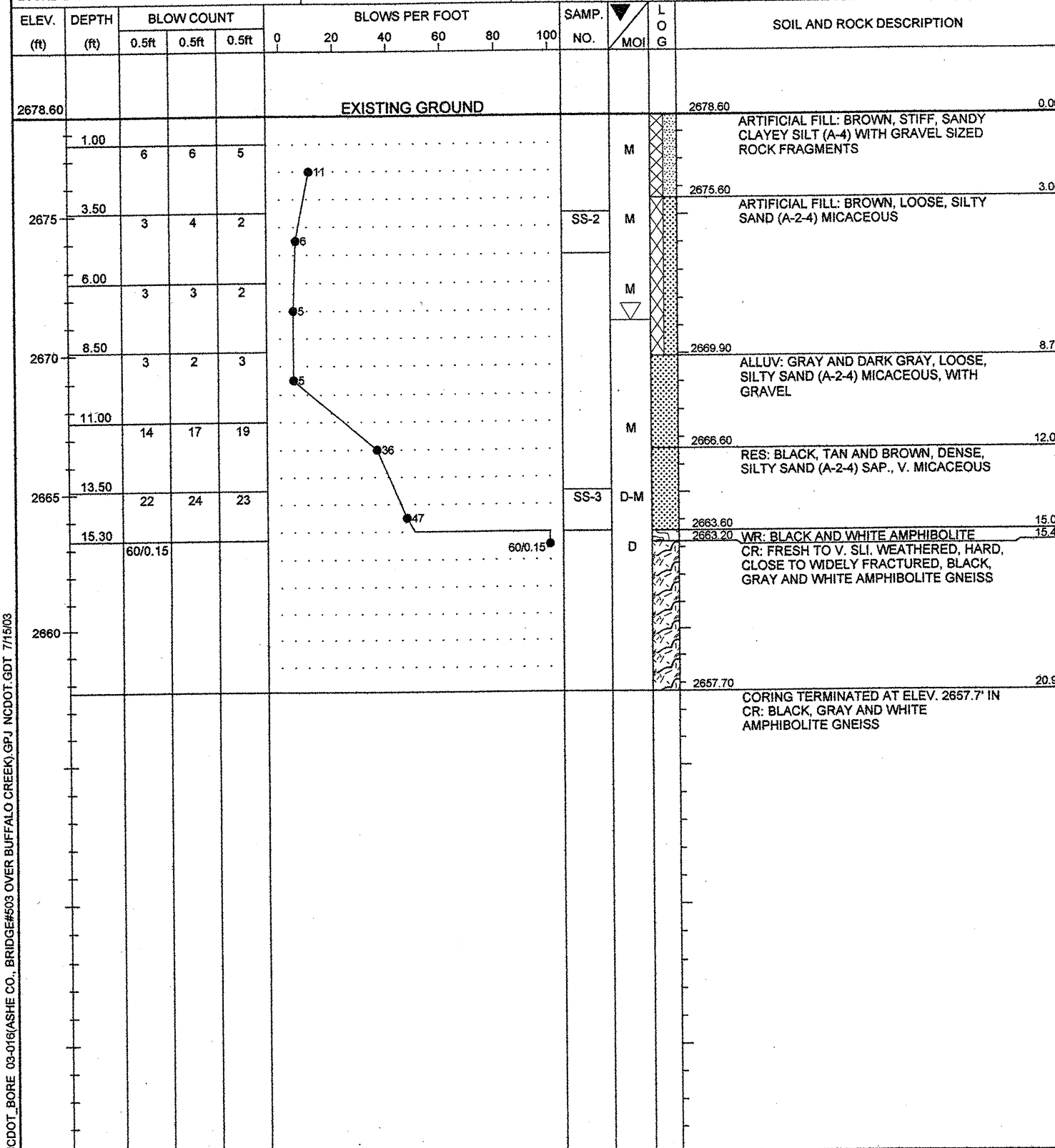
CORE BORING REPORT

DATE: 05/09/03

PROJECT: 8.2711901 I.D. NO.: B-3607 BORING NO: EB2-A GEOLOGIST: C. BRUINSMA

DESCRIPTION: BRIDGE #503 ON SR 1674 OVER BUFFALO CREEK

COUNTY: ASHE COLLAR ELEV.: 2678.6 FT TOTAL DEPTH: 20.9 FT



ELEV. (FT)	DEPTH (FT)	DRILL RATE MIN/FT	RUN (FT)	REC FT %	RQD FT %	SAMP #	FIELD CLASSIFICATION AND REMARKS
2663.3	15.3	2:05/0.6	0.6	0.5/0.6	0.4/0.6		15.3-15.4 WR: BLACK AND WHITE AMPHIBOLITE STRATA REC = 0% STRATA RQD = N/A
2662.7	15.9			83.3%	66.7%		15.4-20.9 CR: FRESH TO V. SLI. WEATHERED, HARD, CLOSE TO WIDELY FRACTURED, BLACK, GRAY AND WHITE AMPHIBOLITE GNEISS
2662.7	15.9	2:55	5.0	5.0/5.0	4.75/5.0		
		2:05		100%	95%		
		2:00					
2657.7	20.9	1:55					STRATA REC = 100% STRATA RQD = 93.6%

CORING TERMINATED AT 20.9 FT
 ELEVATION 2657.7 FT

DRILLER: C. COFFINDAFFER CORE SIZE: HQ3 EQUIPMENT: DIEDRICH D50 TRACK