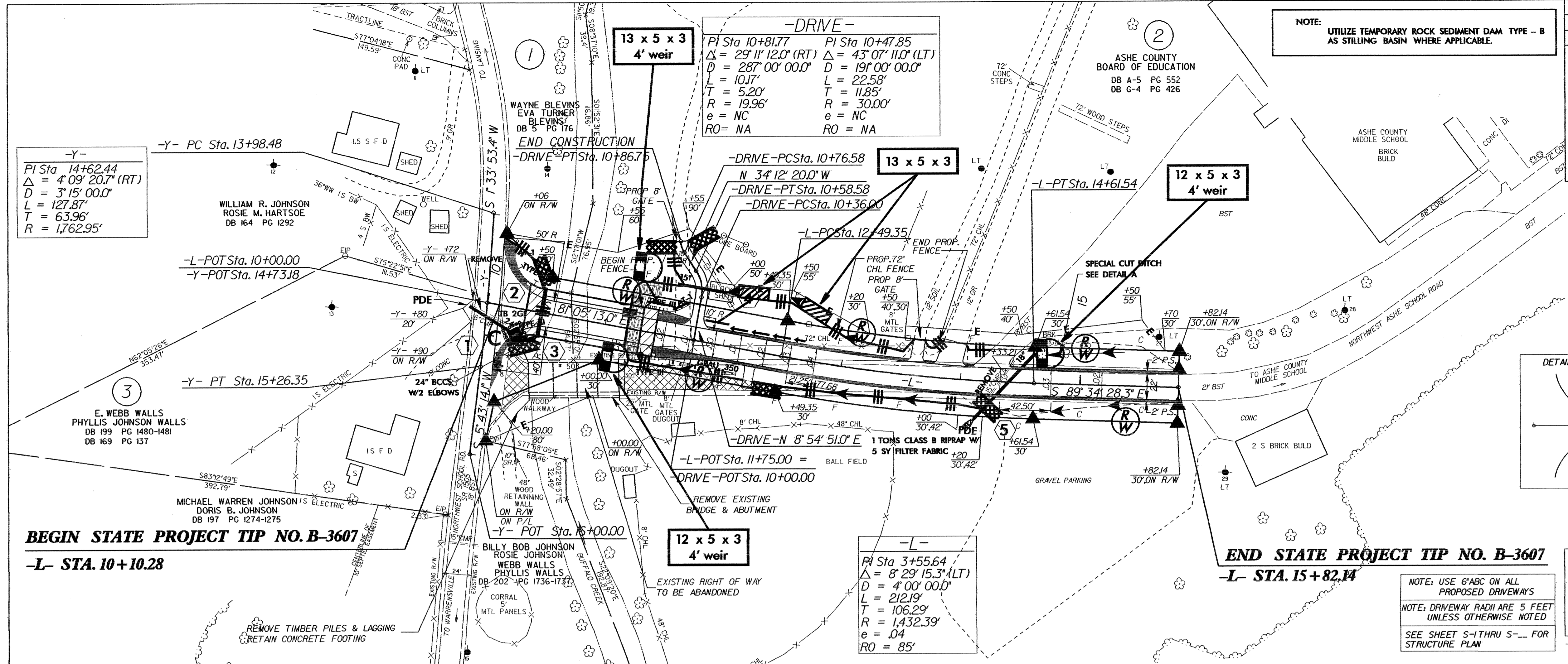


PROJECT REFERENCE NO.	SHEET NO.
B-3607	EC-4/CONST.4
R/W SHEET NO.	HYDRAULICS ENGINEER
ROADWAY DESIGN ENGINEER	

NOTE: UTILIZE TEMPORARY ROCK SEDIMENT DAM TYPE - B AS STILLING BASIN WHERE APPLICABLE.



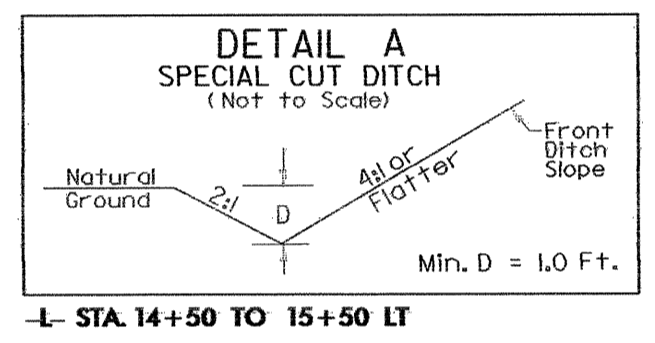
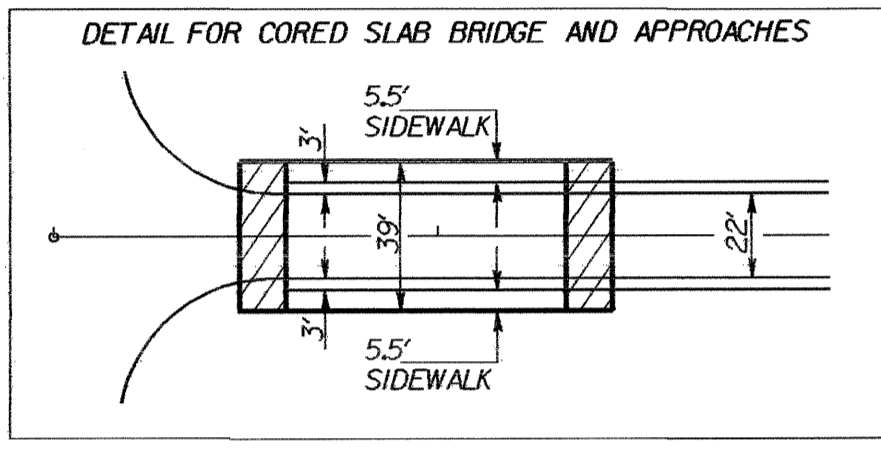
BEGIN STATE PROJECT TIP NO. B-3607

-L- STA. 10+10.28

END STATE PROJECT TIP NO. B-3607

-L- STA. 15+82.14

BENCHMARK
 PK NAIL SET IN CONC. BASE OF SIGN FOR SOUTHWEST MIDDLE SCHOOL BEING SET IN THE NORTHWEST CORNER. THE PLUS AND OVER IS A PROJECTION OF BASELINE -BL- STA 9+35.00 ELEV 2700.88



NOTE: USE 6" ABC ON ALL PROPOSED DRIVEWAYS
 NOTE: DRIVEWAY RADII ARE 5 FEET UNLESS OTHERWISE NOTED
 SEE SHEET S-1 THRU S-4 FOR STRUCTURE PLAN

