

UTILITIES BY OTHERS

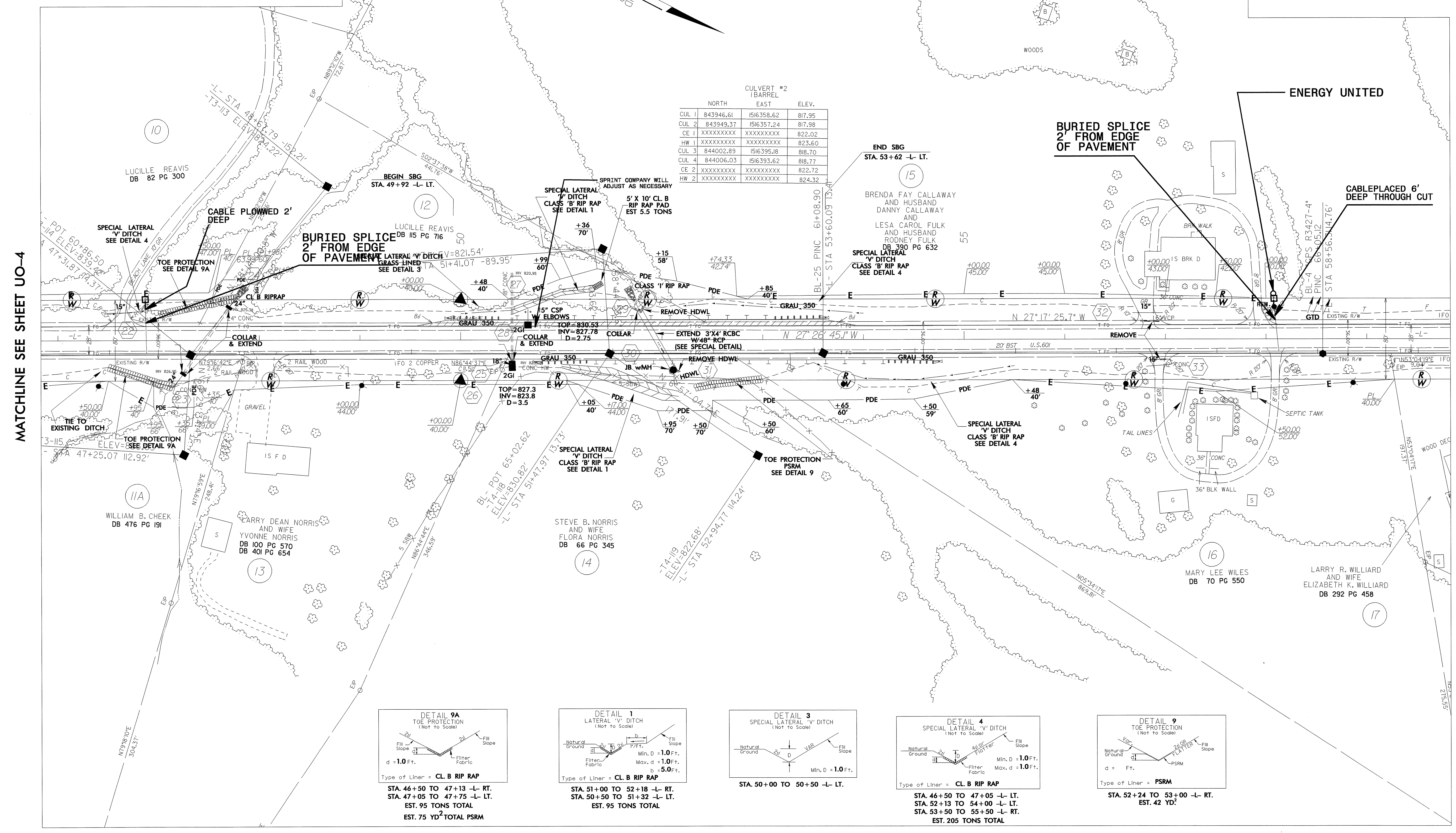
NOTE:
ALL PROPOSED UTILITY WORK
SHOWN ON THIS SHEET WILL
BE DONE BY OTHERS

REVISIONS
7/1/03 - ADDED PRCL.IIA STA 46+00 RT
8/11/03 - PRCL 10,11,12 & 16 NAME CHANGE
8/11/03 - ADDED SEPTIC TANK & LINES PRCL 16

YADKIN VALLEY TELEPHONE
WILL MAINTAIN EXISTING FIBER
AND COPPER CABLES

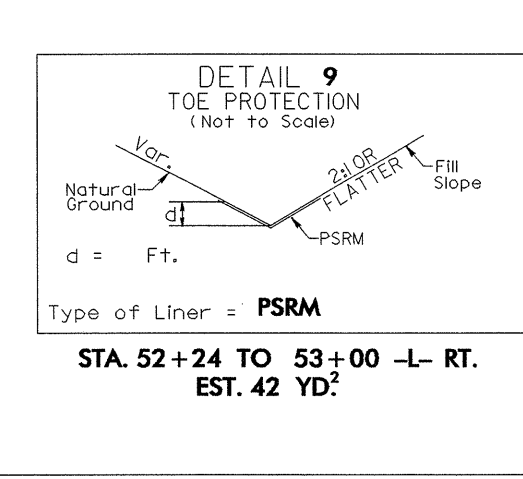
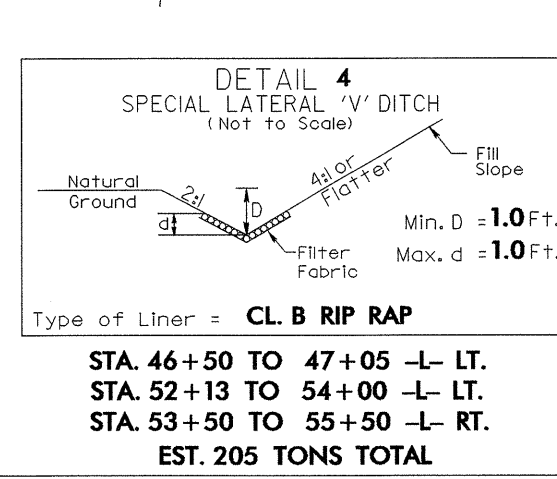
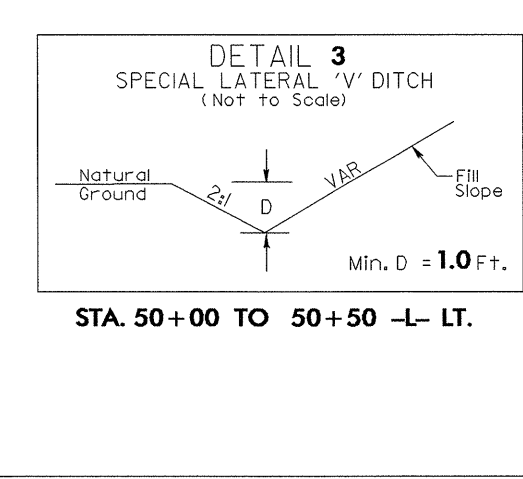
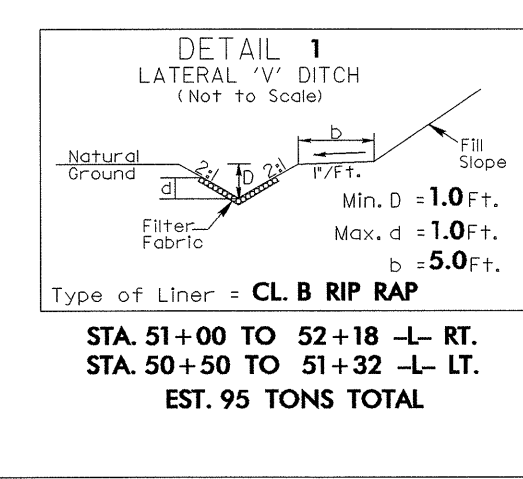
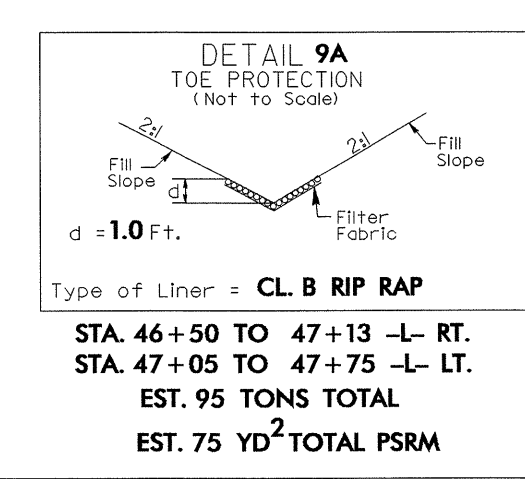
CULVERT #2
1 BARREL

	NORTH	EAST	ELEV.
CUL 1	843946.61	1516358.62	817.95
CUL 2	843949.37	1516357.24	817.98
CE 1	XXXXXXXXXX	XXXXXXXXXX	822.02
HW 1	XXXXXXXXXX	XXXXXXXXXX	823.60
CUL 3	844002.89	1516395.18	818.70
CUL 4	844006.03	1516393.62	818.77
CE 2	XXXXXXXXXX	XXXXXXXXXX	822.72
HW 2	XXXXXXXXXX	XXXXXXXXXX	824.32



MATCHLINE SEE SHEET UO-4

MATCHLINE SEE SHEET UO-6



30-AUG-2004 11:36
 F:\Utilities\Projects\R3427_UO_05psh.dgn
 msnyder AT DS214771