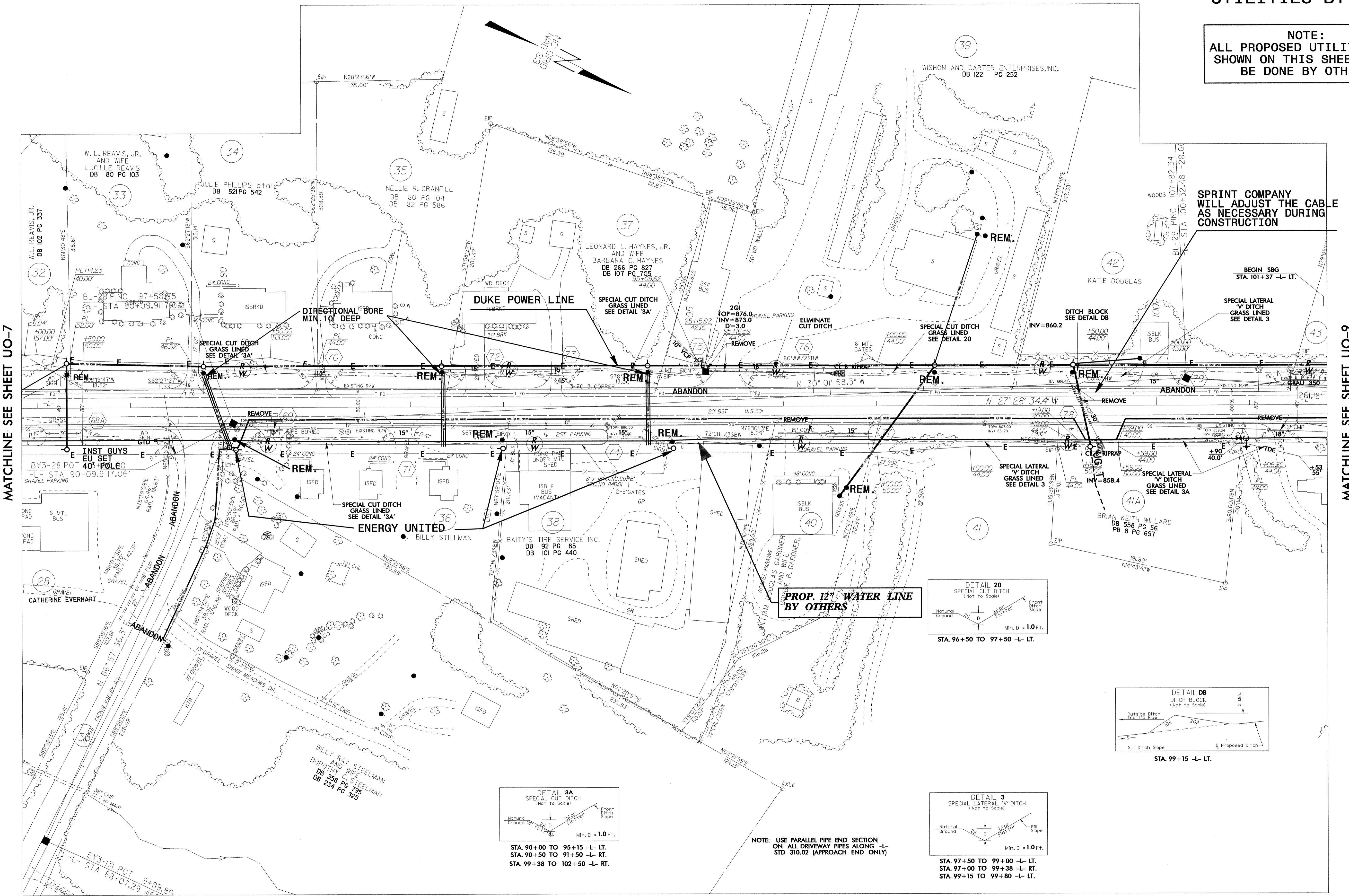


UTILITIES BY OTHERS

NOTE:
ALL PROPOSED UTILITY WORK
SHOWN ON THIS SHEET WILL
BE DONE BY OTHERS

SPRINT COMPANY
WILL ADJUST THE CABLE
AS NECESSARY DURING
CONSTRUCTION



8/17/99
 30-AUG-2004 11:35
 C:\Utilities\Projects\R3427_UO_08psht.dgn
 Utilities.dwg 2/17/04