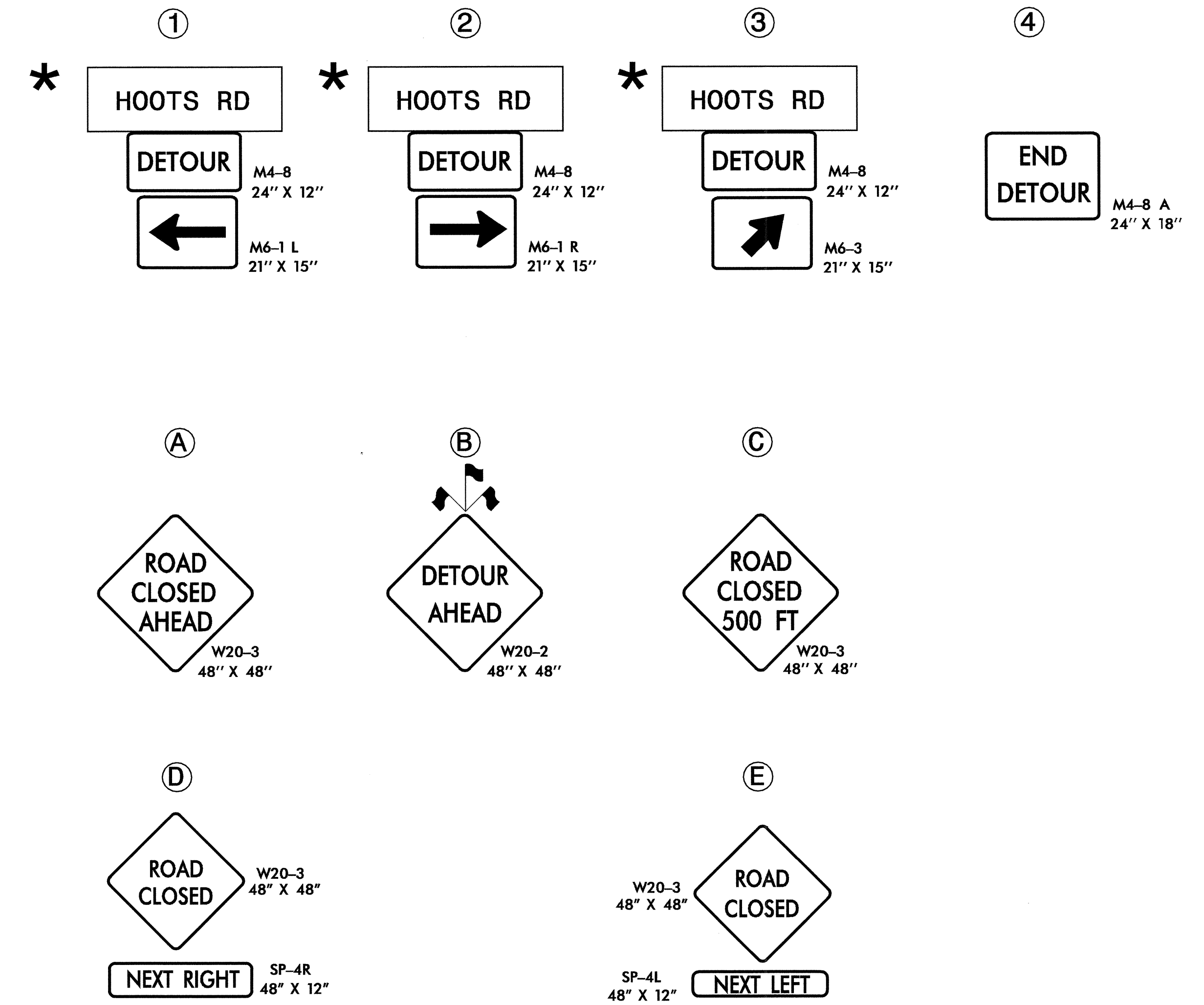
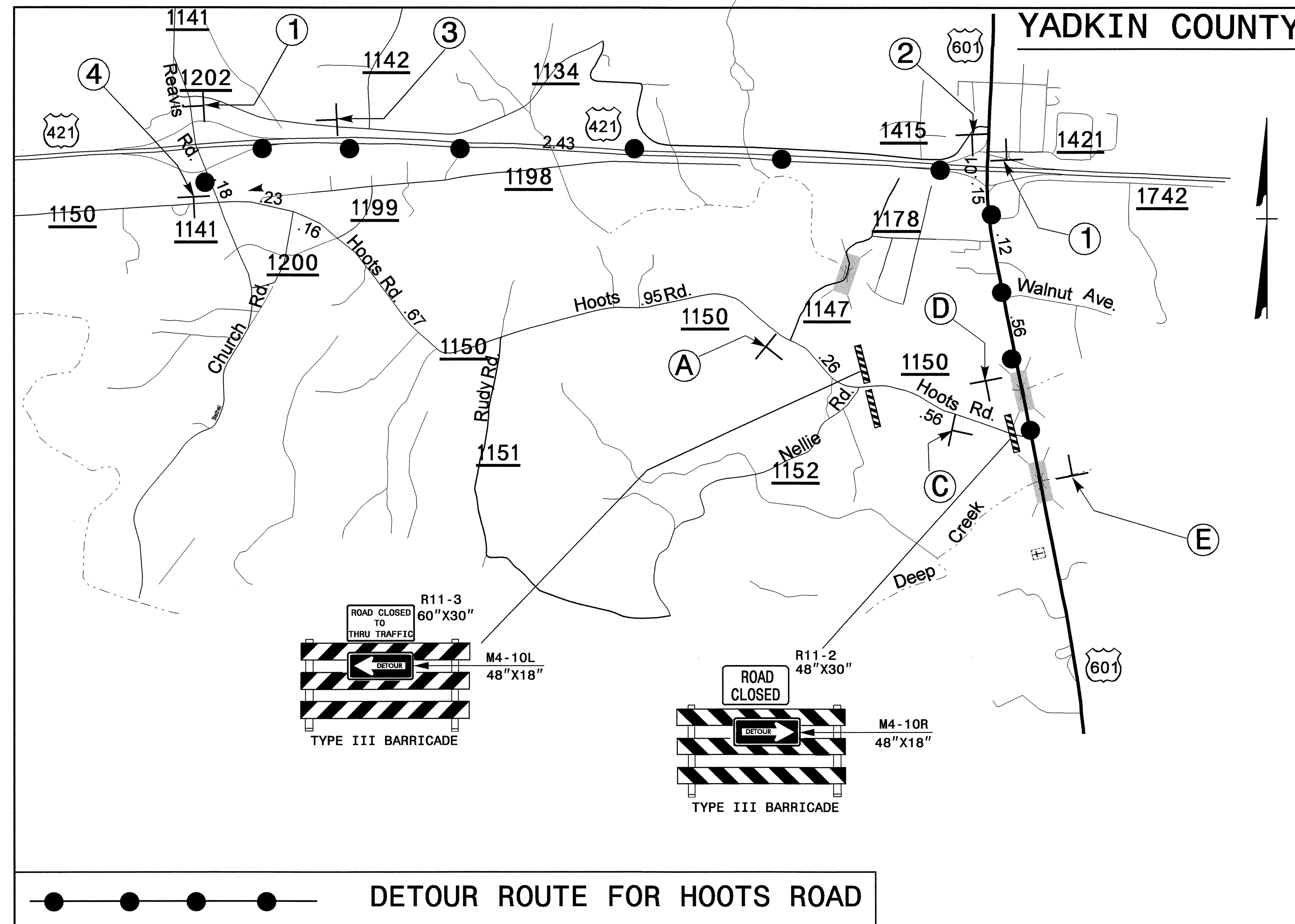


DETOUR MAP & SIGNS FOR HOOTS ROAD



I:\AUG-2004\04\11
 M:\TCP\updated_tcp\1tcp\NR-3427_TC.B\Top.dgn
 halawandos AT TETC206424

- USE THIS SHEET IN CONJUNCTION WITH RSD 1101.03
 SHEETS 1 OF 9 & 2 OF 9
 - * SEE SHEET TCP-19A FOR SIGN DESIGN

| | | | | | | |
|---|--|---|--|--|--|--|
| APPROVED: <i>Joseph Ishak</i> DATE: 8/17/04 | DETOUR MAP & SIGNS FOR HOOTS ROAD | REVISIONS <table border="1" style="width: 100%; height: 40px;"> <tr><td> </td><td> </td></tr> <tr><td> </td><td> </td></tr> </table> | | | | |
| | | | | | | |
| | | | | | | |
| SCALE: NONE DATE: JULY 2004 DWG. BY: HAL DESIGN BY: HAL REVIEWED BY: JI | | CADD FILE | | | | |