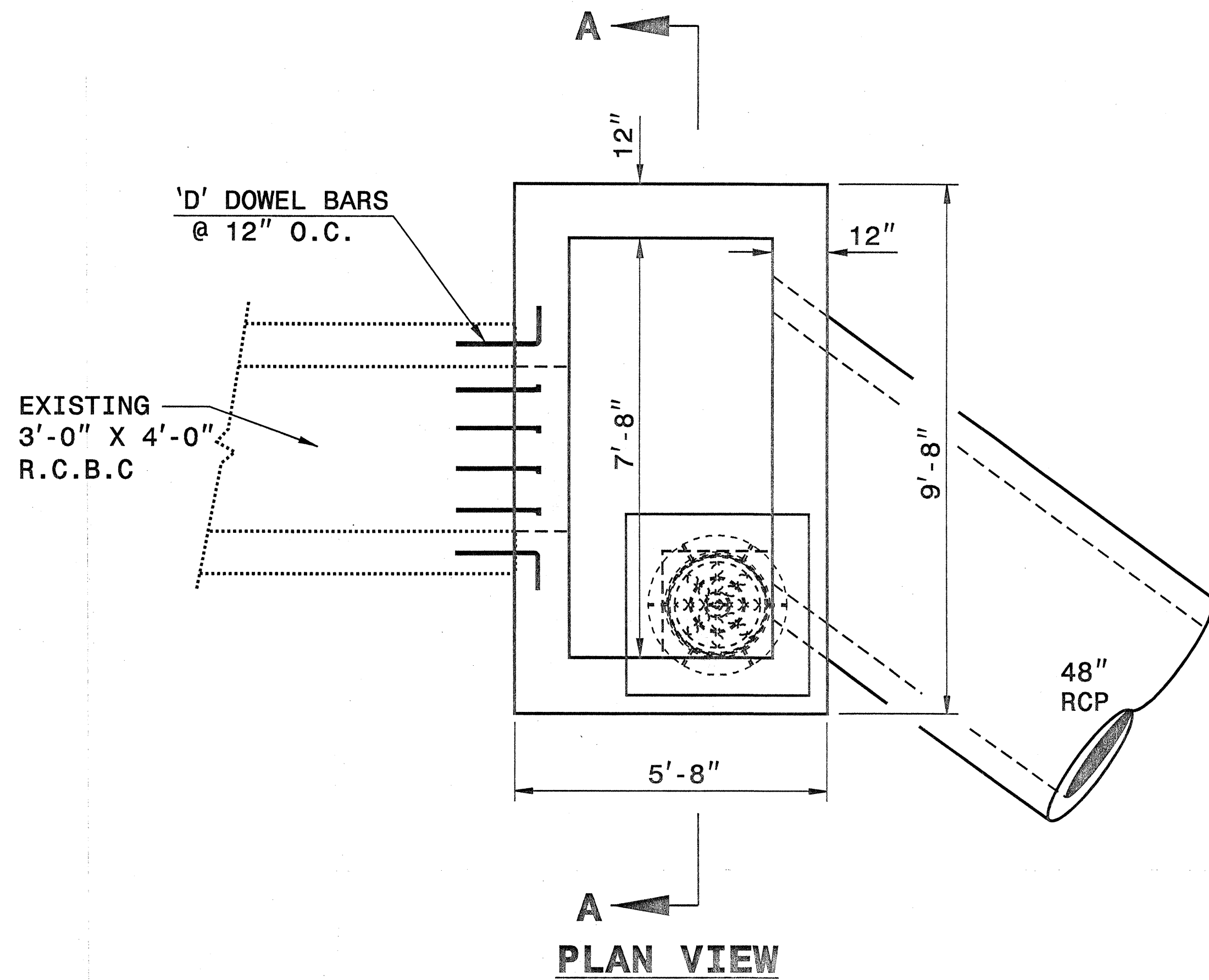


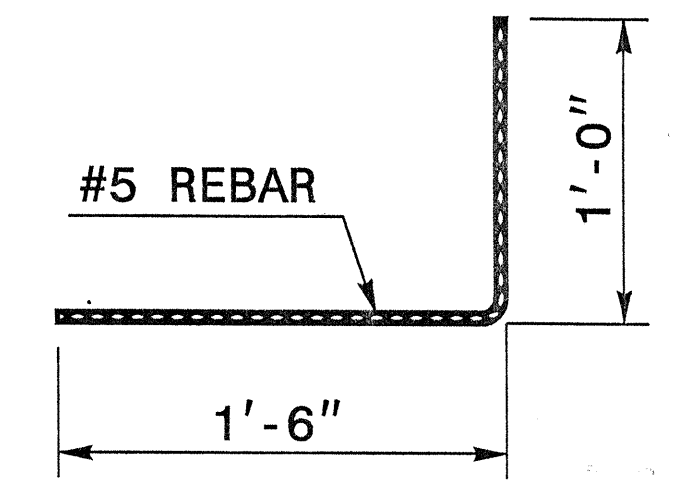
GENERAL NOTES:

- CONSTRUCT THE JUNCTION BOX WITH CLASS "B" OR BETTER CONCRETE.
- CHAMFER ALL EXPOSED CORNERS 1".
- DOWEL 'D' BARS SHALL BE IMBEDDED 1'-0" MINIMUM INTO THE CULVERT WALLS, TOP AND BOTTOM SLABS. DOWELS SHALL BE CHEMICALLY ANCHORED IN ACCORDANCE WITH STRUCTURE SPECIAL PROVISION "ADHESIVELY ANCHORED ANCHOR BOLTS OR DOWELS". DOWEL 'D' BARS SHALL BE ROTATED TO VARIOUS ANGLES WHEN BEING ANCHORED TO OBTAIN GOOD ATTACHMENT BETWEEN THE CULVERT AND COLLAR.
- ALL DIMENSIONS SHOULD BE FIELD VERIFIED.
- CONSTRUCT CONCRETE BOX IN ACCORDANCE WITH SECTION 825 OF THE STANDARD SPECIFICATIONS.
- ADJUST LENGTH OF STEEL BARS AS NEEDED TO COMPENSATE FOR PIPES AND MANHOLE OPENINGS.
- REINFORCING STEEL SHALL CONFORM TO ASTM A 615, GRADE 400.
- CUT OR BEND STEEL BARS AS NEEDED TO PROVIDE 2" CLEARANCE.
- PLACE STEPS 12" ON CENTERS IN ACCORDANCE WITH STD. 840.66.

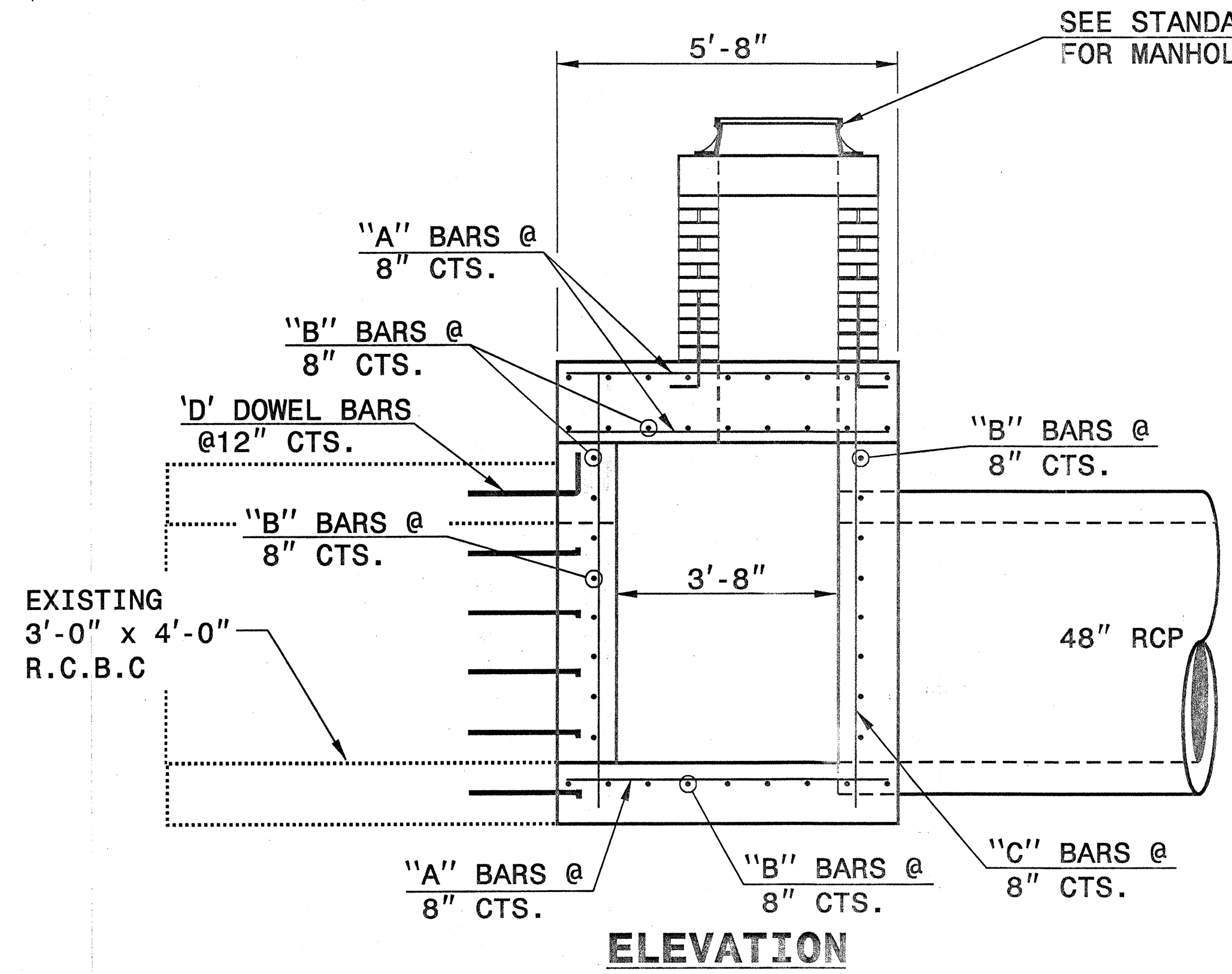


BILL OF MATERIAL

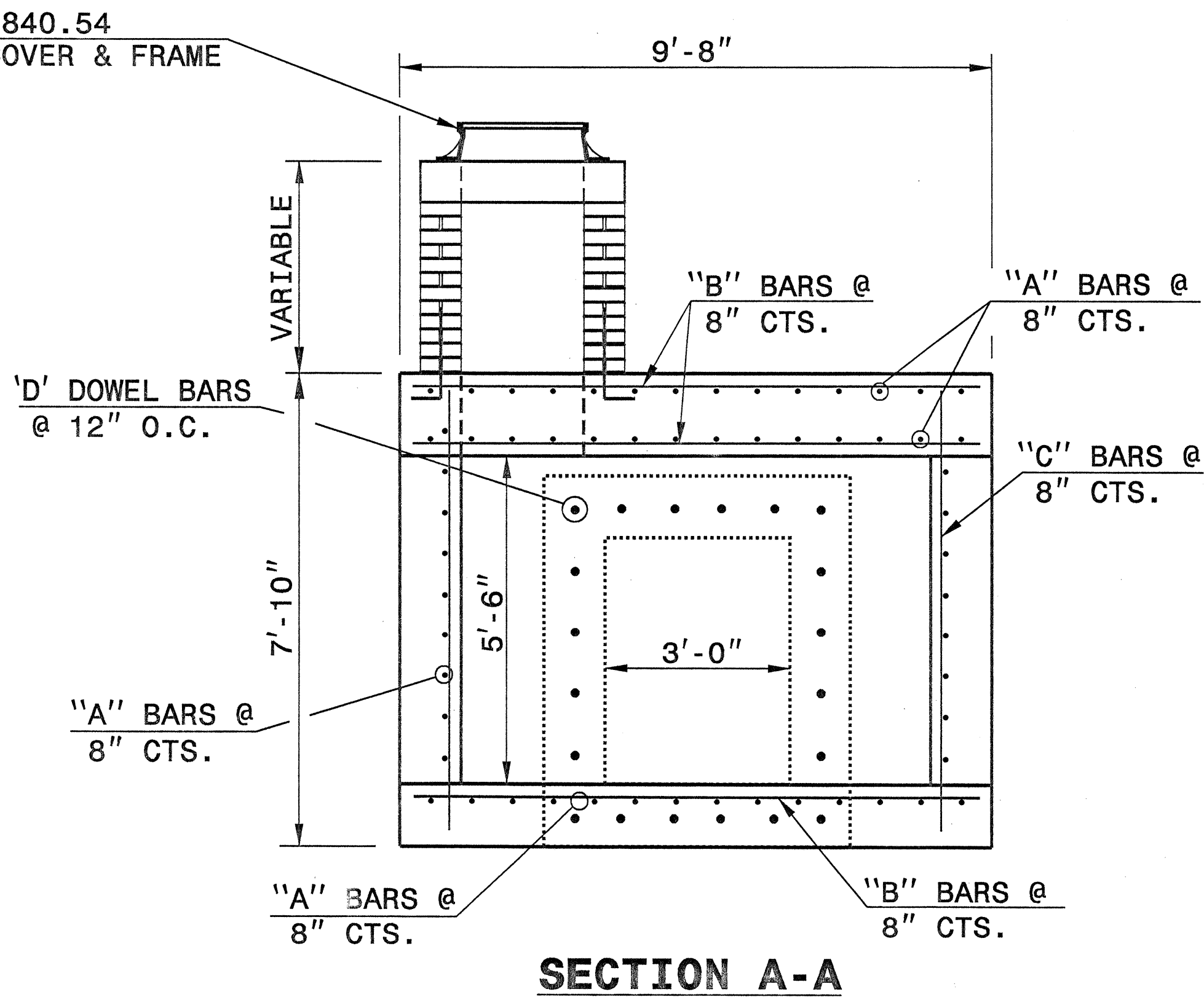
BAR	NO.	SIZE	LENGTH	WEIGHT
A	69	#5	9'-4"	672
B	51	#5	5'-4"	284
C	48	#5	7'-6"	375
D	32	#5	2'-6"	839
TOTAL REINF. STEEL (LBS.)				2170
CLASS "B" CONC. (C.Y.)				8.6



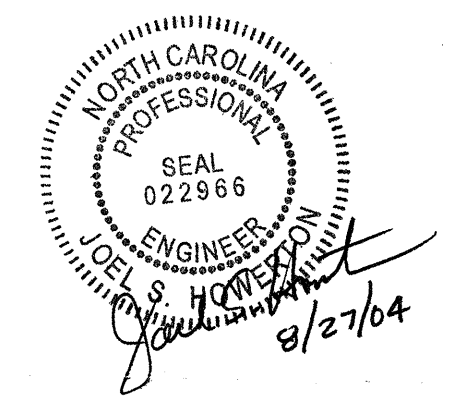
DOWEL 'A'



ELEVATION



SECTION A-A



STA. 63+91 -L- (LT.&RT.)
STA. 51+95 -L- (RT.)

**DESIGN SERVICES UNIT
STANDARDS AND SPECIAL DESIGN**
Office 919-250-4128 FAX 919-250-4119

**DETAIL OF JUNCTION BOX
CONNECTING EXISTING
RCBC TO 48" RCP W/MANHOLE**

ORIGINAL BY: T. Speil DATE: 5-5-04
MODIFIED BY: J. Speil DATE: 5/29/04
CHECKED BY: J. Speil DATE: 5/29/04
FILE SPEC.: w:\speil\stand\col&boxes r34 .dgn

06-MAY-2004 10:24 W:\speil\stand\col&boxes r34 .dgn speil AT DS203855