

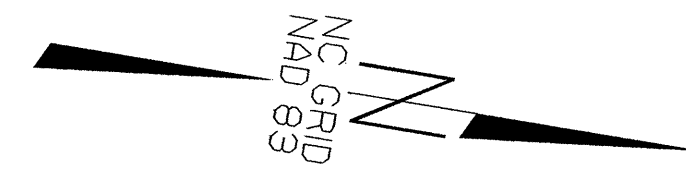
**NOTES**

FOR -L- PROFILE SEE SHEETS 44,45 & 46  
ALL DRIVEWAY RADII ARE 20' UNLESS NOTED

-L-  
PI Sta 185+35.85  
 $\Delta = 0' 25' 30.0''$  (LT)  
 $D = 0' 02' 50.0''$   
 $L = 900.18'$   
 $T = 450.09'$   
 $R = 121,351.16'$   
SE = NC

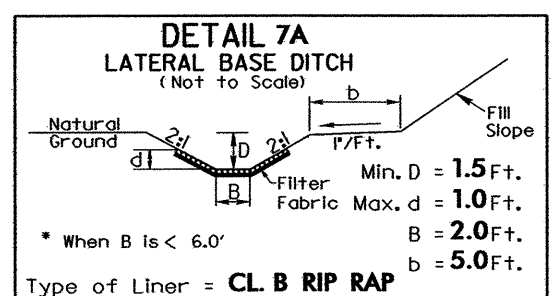
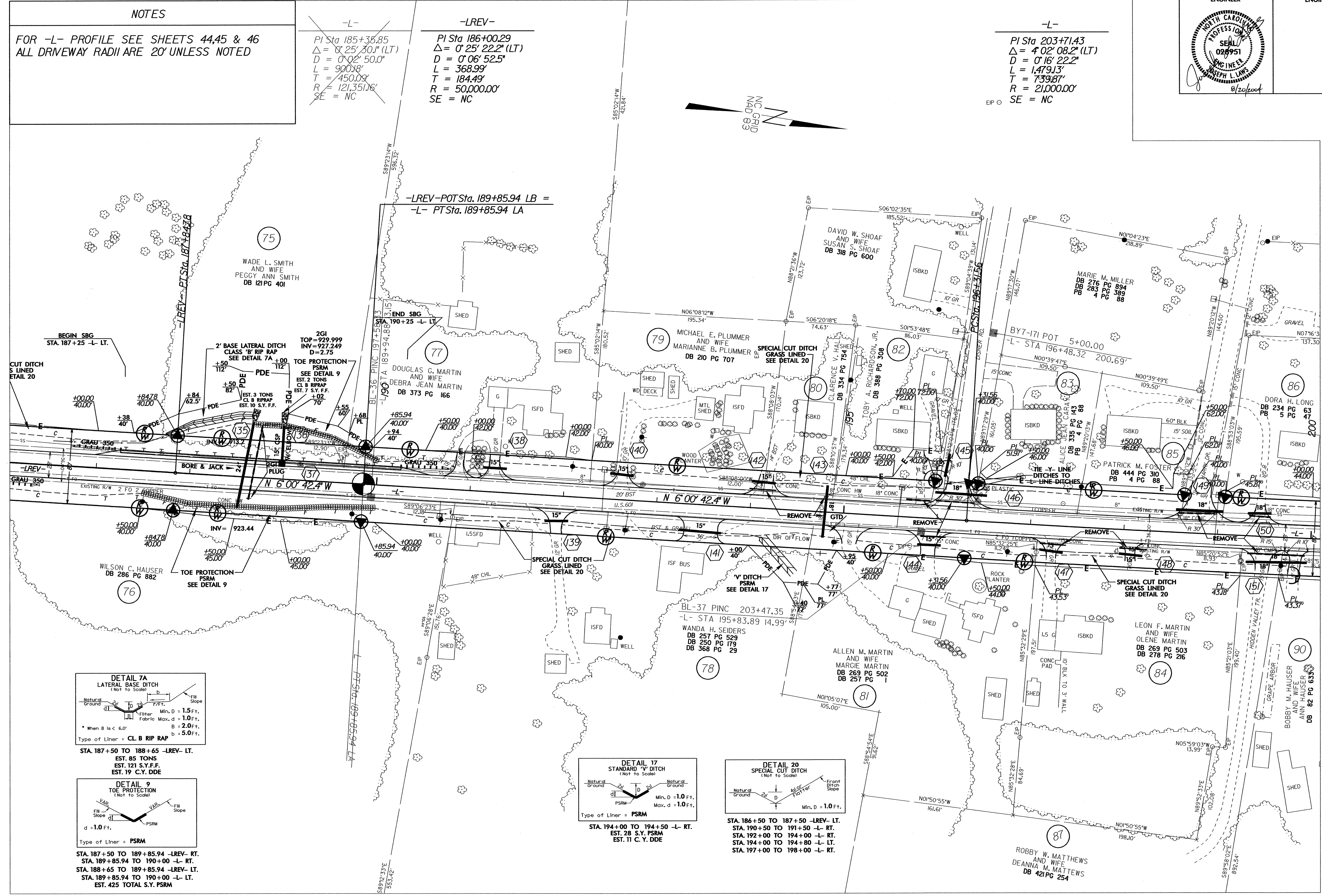
-LREV-  
PI Sta 186+00.29  
 $\Delta = 0' 25' 22.2''$  (LT)  
 $D = 0' 06' 52.5''$   
 $L = 368.99'$   
 $T = 184.49'$   
 $R = 50,000.00'$   
SE = NC

-L-  
PI Sta 203+71.43  
 $\Delta = 4' 02' 08.2''$  (LT)  
 $D = 0' 16' 22.2''$   
 $L = 1,479.13'$   
 $T = 739.87'$   
 $R = 21,000.00'$   
SE = NC

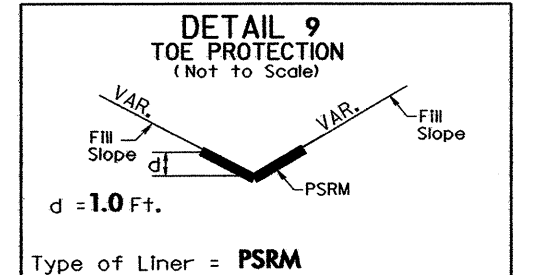


MATCHLINE \*\* SEE SHEET 16 \*\*

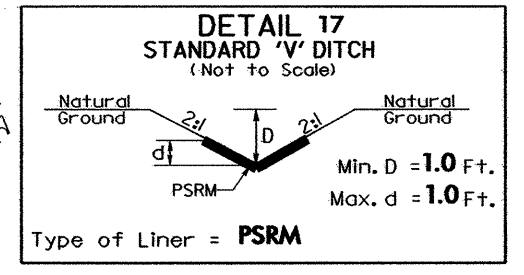
MATCHLINE \*\* SEE SHEET 18 \*\*



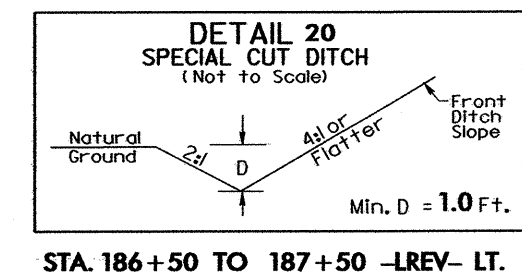
STA. 187+50 TO 188+65 -LREV- LT.  
EST. 85 TONS  
EST. 121 S.Y.F.F.  
EST. 19 C.Y. DDE



STA. 187+50 TO 189+85.94 -LREV- RT.  
STA. 189+85.94 TO 190+00 -L- RT.  
STA. 188+65 TO 189+85.94 -LREV- LT.  
STA. 189+85.94 TO 190+00 -L- LT.  
EST. 425 TOTAL S.Y. PSRM



STA. 194+00 TO 194+50 -L- RT.  
EST. 28 S.Y. PSRM  
EST. 11 C.Y. DDE



STA. 186+50 TO 187+50 -LREV- LT.  
STA. 190+50 TO 191+50 -L- RT.  
STA. 192+00 TO 194+00 -L- RT.  
STA. 194+00 TO 194+80 -L- LT.  
STA. 197+00 TO 198+00 -L- RT.